

Noise District Information

The Noise Bylaw sets limits for four key areas within the city: Quiet District, Intermediate District, Harbour Intermediate and Activity District. 450 Swift Street (Craft Beer Market) is within the Intermediate Noise District.

The Intermediate Noise District is limited to 60dBA at the point of reception until 10 pm; after 10 pm, noise at the point of reception is limited to 50dBA in Quiet districts, 55dBA in Harbour Intermediate and Intermediate districts and 65dBA in the Activity district. 50dBA is comparable to rainfall, light traffic or a refrigerator and 60dBA is comparable to conversational speech or an air conditioner.

Noise Bylaw No. 03-012

Schedule B: Summary of Districts' Permitted Noise Levels

		NOISE RECEIVER DISTRICT							
		QUIET		INTER-MEDIATE		HARBOUR INTER-MEDIATE		ACTIVITY	
		Day	Night	Day	Night	Day	Night	Day	Night
NOISE SOURCE DISTRICT	QUIET	55	45	55	50	55	50	60	60
	INTER-MEDIATE	60	50	60	55	60	55	65	65
	HARBOUR INTER-MEDIATE	60	50	60	55	60	55	65	65
	ACTIVITY	60	55	65	60	67.5	60	70	70

Table 1: Equivalent Sound Level (L_{eq}) Limits (expressed in dBA) for sound or noise created and received in the "Quiet", "Intermediate" and "Activity" Noise Districts

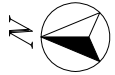
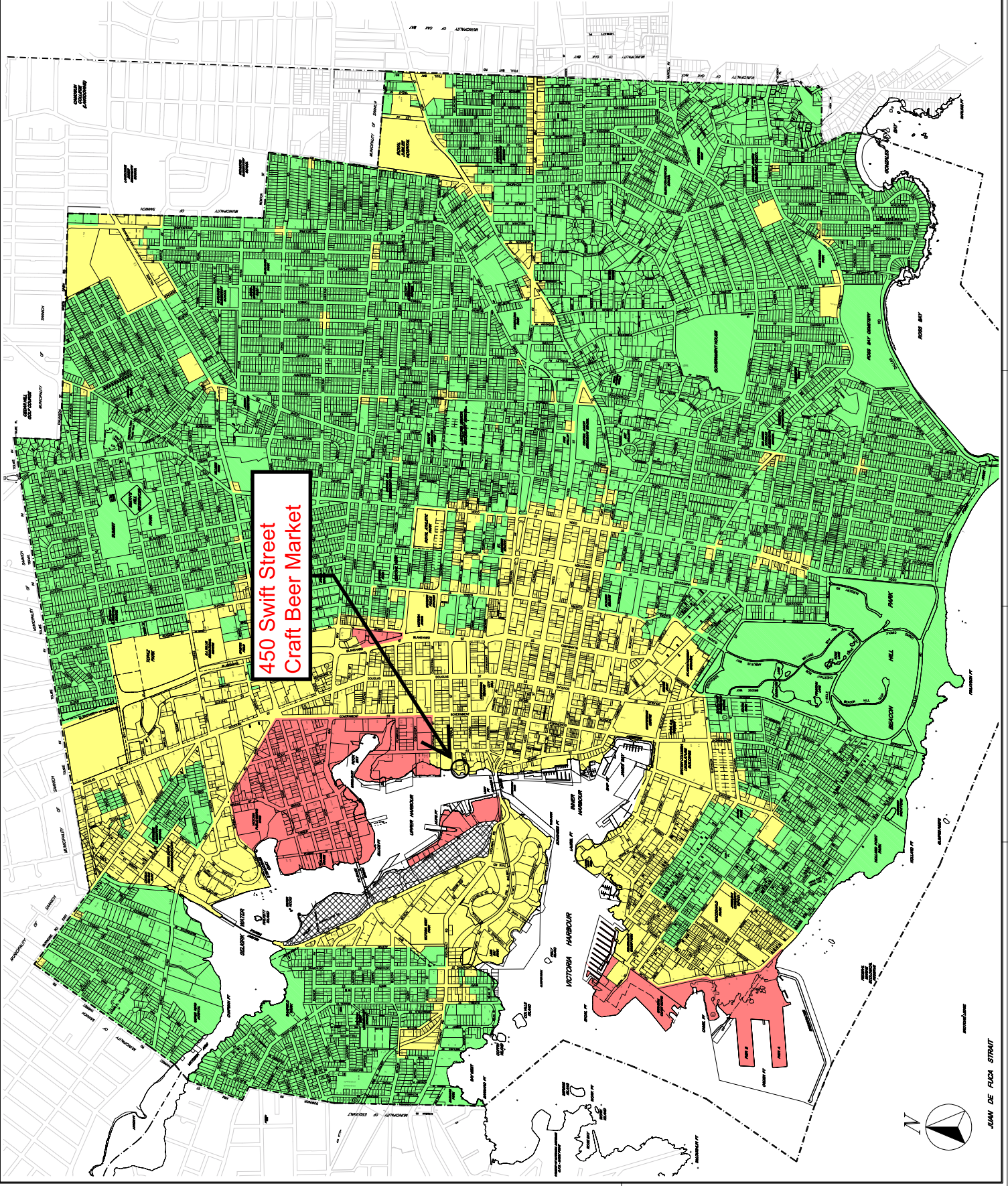
City of Victoria Noise District Map

LEGEND

- Quiet District
- Intermediate District
- Harbour Intermediate District
- Activity District

Date: February 17, 2004

Scale: Not to Scale



JUAN DE FUCA STRAIT