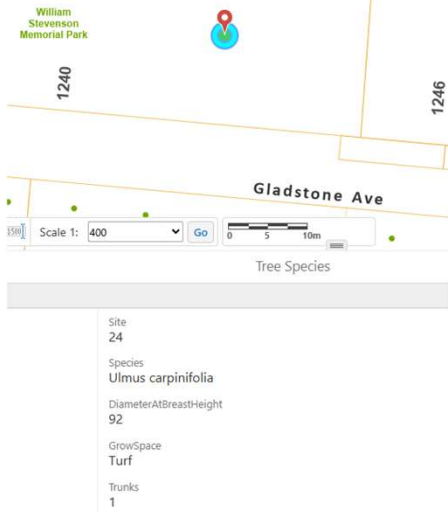


Urban forest measurement:

Trees (Parks Inventory)



Tree Canopy 2023



Source: City of Victoria Maps (VicMap)

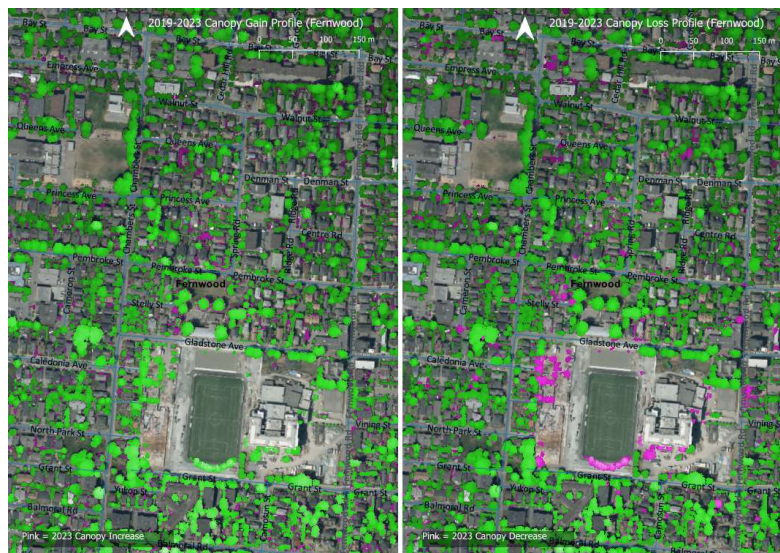
1

Urban forest monitoring:

2013-2019

Neighbourhood	% change from 2013-2019
Burnside	10.37%
Downtown	23.78%
Fairfield	4.88%
Fernwood	8.79%
Gonzales	5.95%
Harris Green	6.39%
Hillside Quadra	13.28%
James Bay	13.93%
North Jubilee	10.46%
North Park	9.26%
Oaklands	9.19%
Rockland	4.40%
South Jubilee	8.21%
Victoria West	18.79%
Total	9.28%

Source: City of Victoria (Terra Remote Sensing)



2019

2023

2

Request that City of Victoria Urban Forestry staff perform the following analyses and provide recommendations

- 1. a) 2021-2025 quantity of trees retained and quantity of trees removed**
b) 2021-2025 quantity of development sites that met tree minimums compared to developments that did not meet tree minimums.
- 2. Obtain vegetation (urban tree canopy) change detection analysis for 2019-2023**
- 3. Define the percentage of plantable space for residential zoning parameters relative to findings of Actions 1 and 2**