

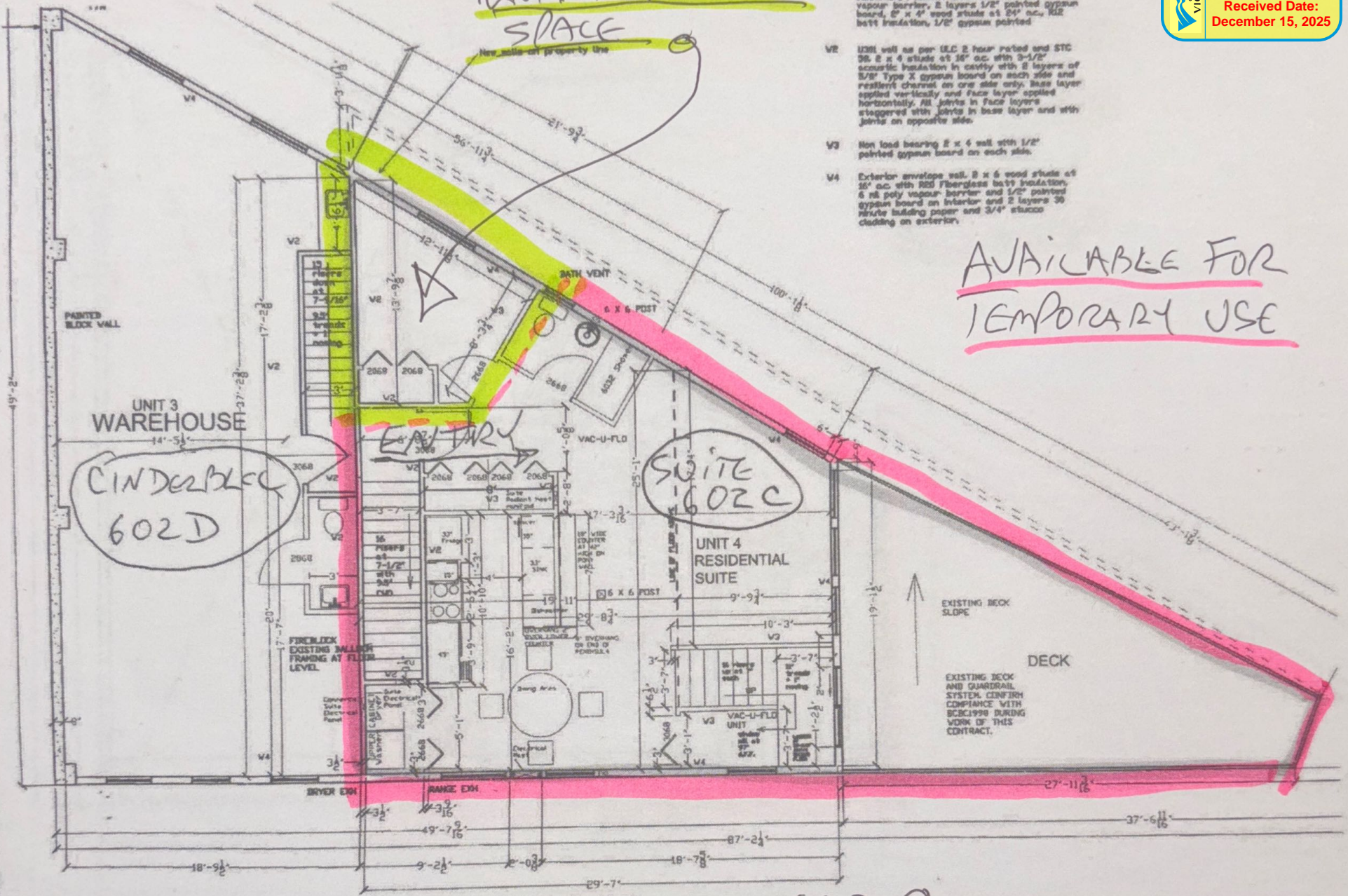


TENANT PRIVATE SPACE

INSULATION, RESISTIVE CHANNELS AT 24" O.C. w/ no vapour barrier, 2 layers 1/2" painted gypsum board, 2" x 4" wood studs at 24" o.c., R12 batt insulation, 1/2" gypsum pointed

- V2 U201 wall as per ULC 2 four panels and STC 36. 2 x 4 studs at 16" o.c. with 2-1/2" acoustic insulation in cavity with 2 layers of 5/8" Type X gypsum board on each side and resilient channel on one side only. Base layer applied vertically and face layer applied horizontally. All joints in face layers staggered with joints in base layer and with joints on opposite side.
- V3 Non load bearing 2 x 4 wall with 1/2" painted gypsum board on each side.
- V4 Exterior envelope wall. 2 x 4 wood studs at 16" o.c. with R50 Fiberglass batt insulation, 6 mil poly vapour barrier and 1/2" painted gypsum board on interior and 2 layers 3/8" moisture building paper and 3/4" stucco cladding on exterior.

AVAILABLE FOR TEMPORARY USE



UNIT 3 WAREHOUSE

CINDER BLOCK 602D

SUITE 602C

UNIT 4 RESIDENTIAL SUITE

SECOND FLOOR PLAN
SCALE 1/8" = 1'

1/8" = 1' 602C

