

---

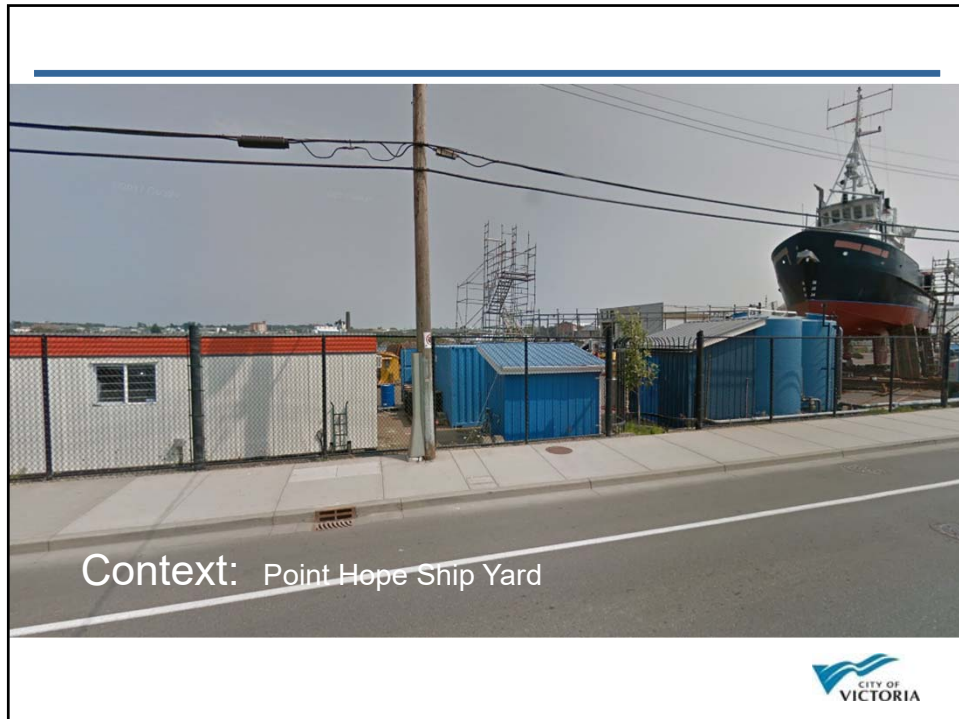
Application for a  
Rezoning and Development  
Permit Application for:  
356 Harbour Road













Context: Commercial Building 376 Harbour



Context: Farmer Construction Building

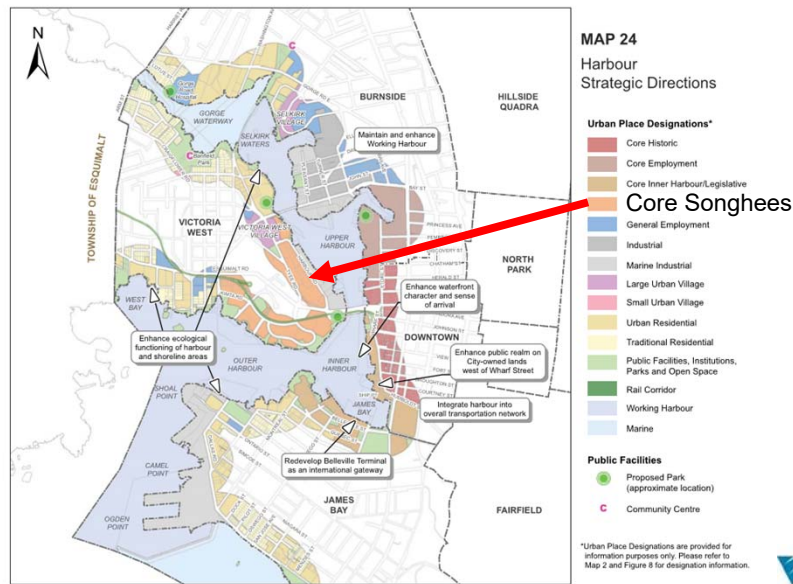




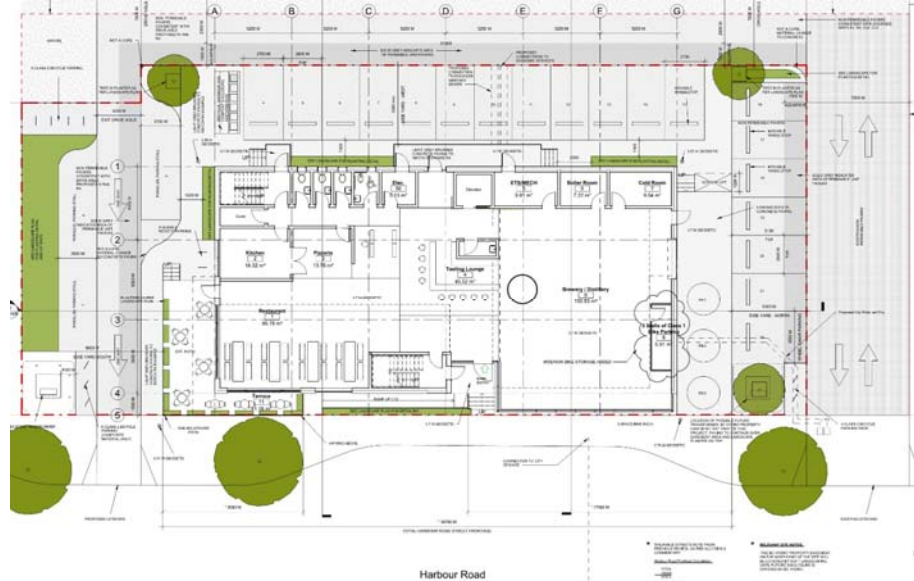
Context: Biomass Building



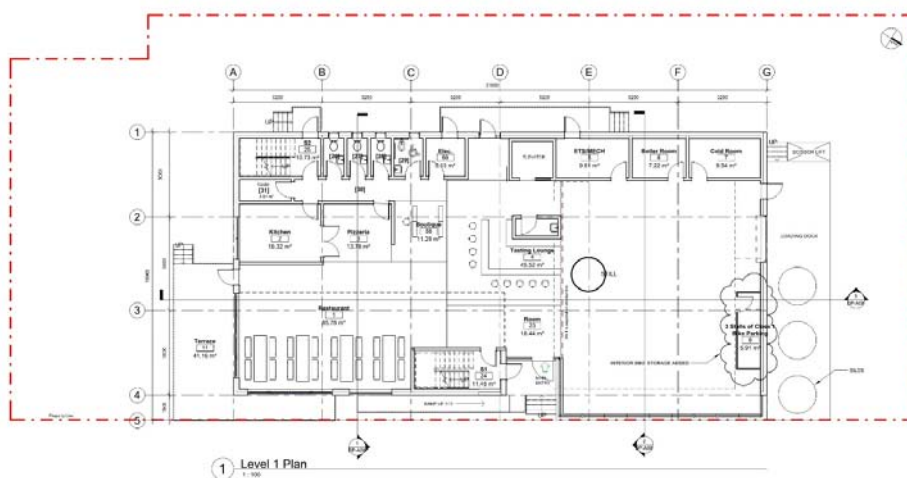
SECTION 21: NEIGHBOURHOOD DIRECTIONS



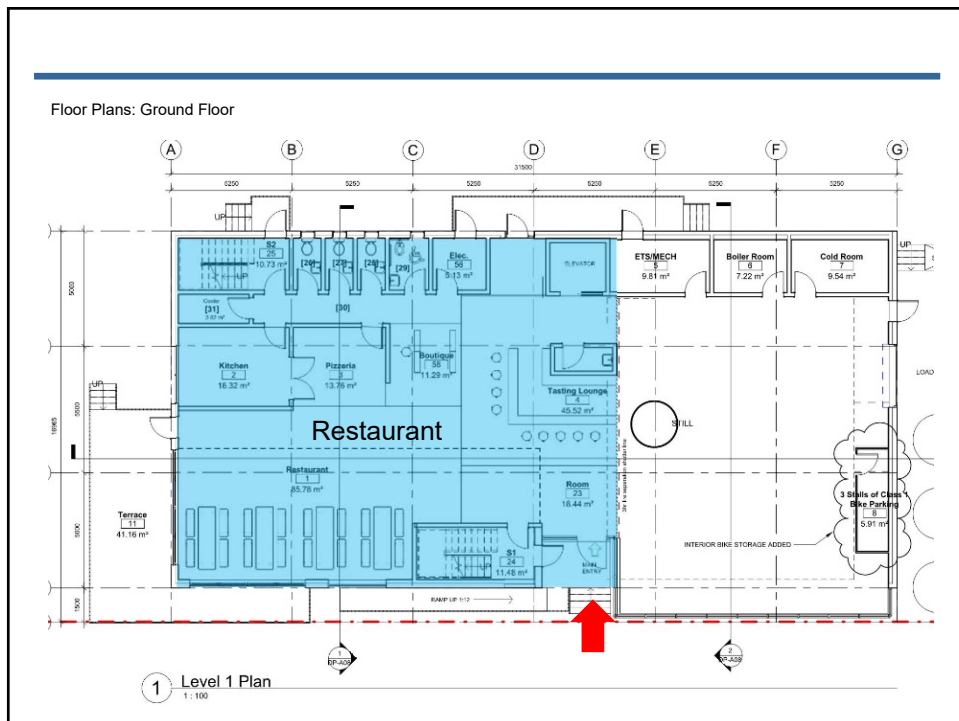
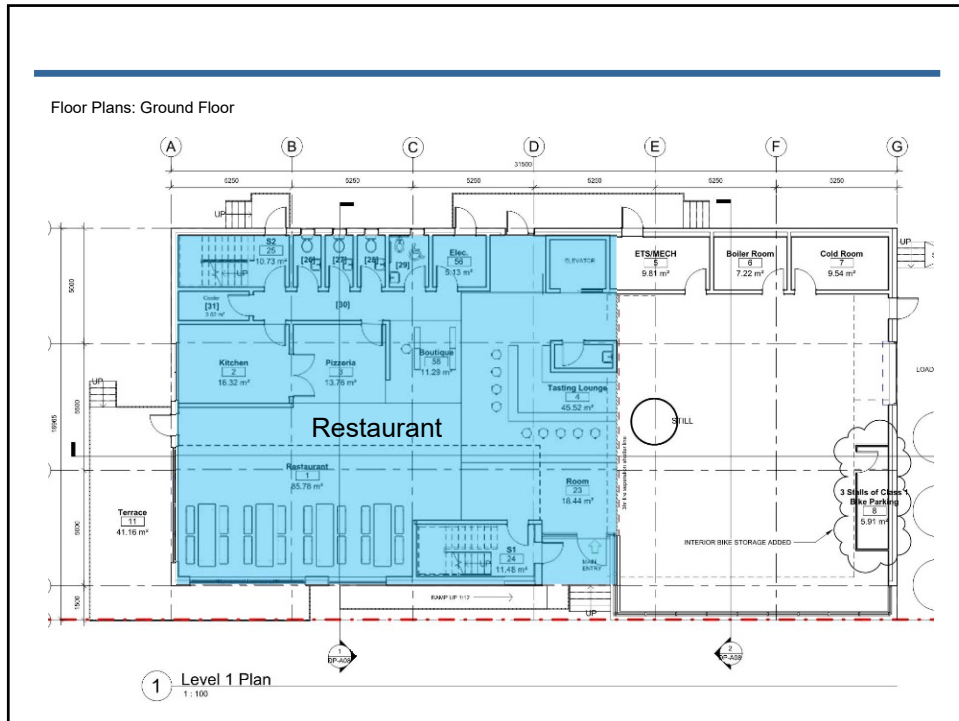
Site Plan:



Floor Plans: Ground Floor

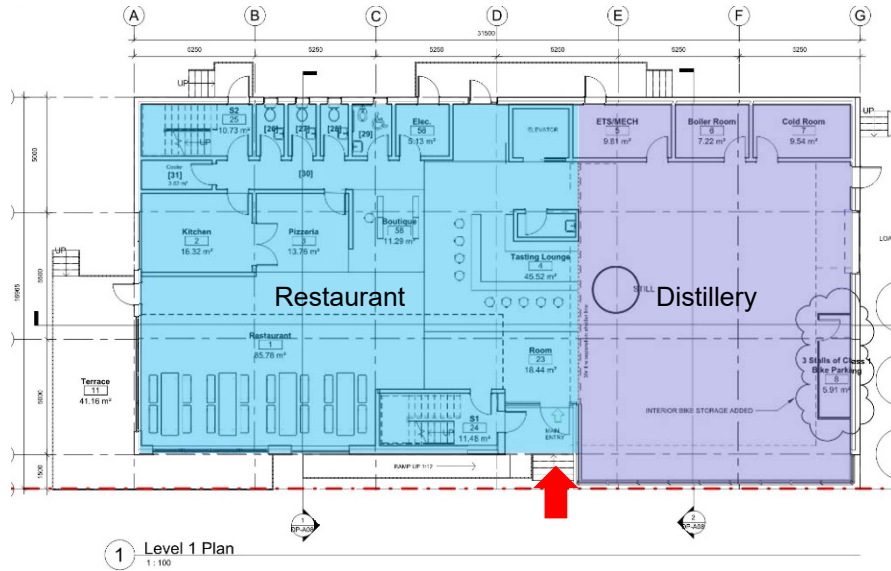




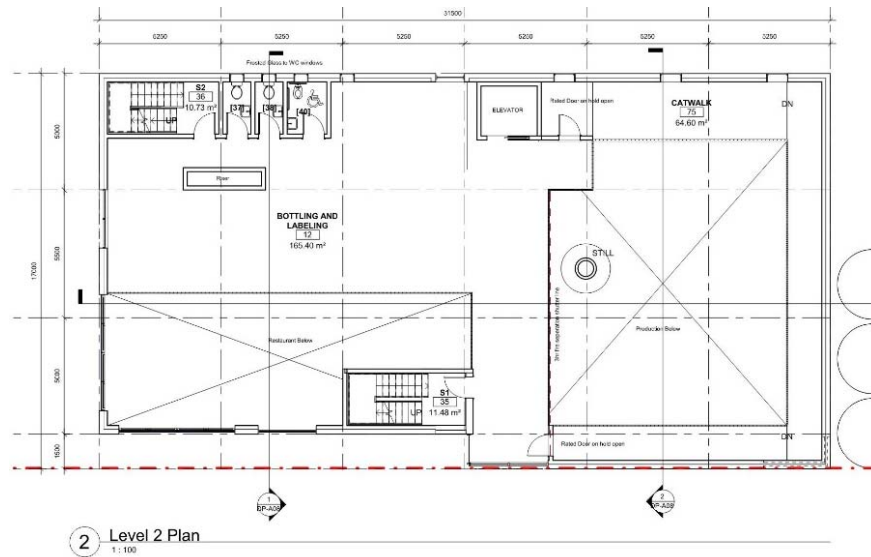




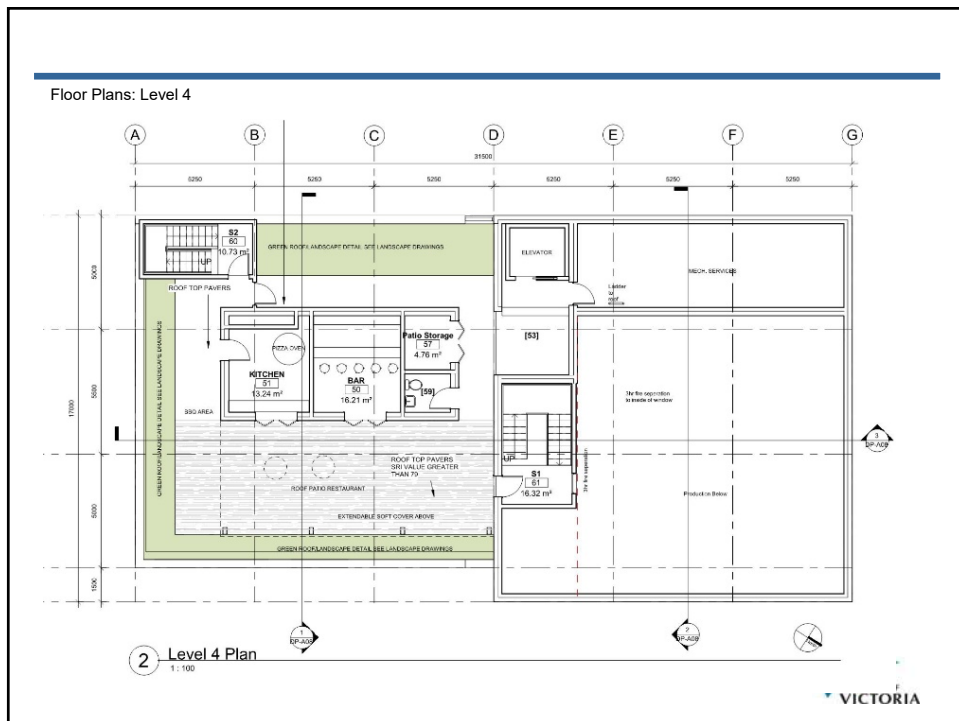
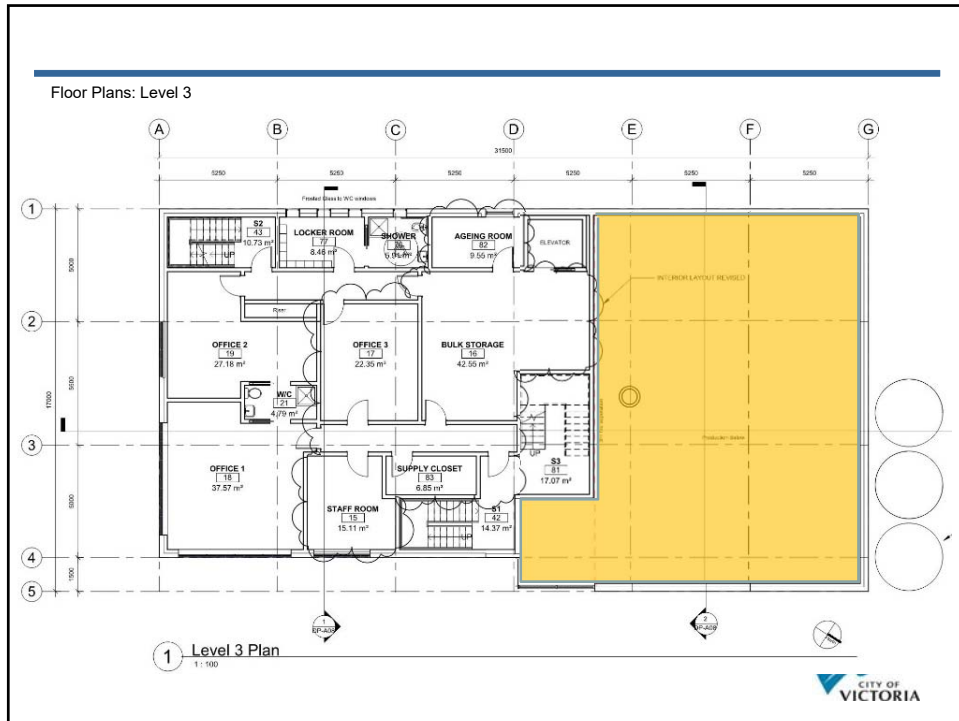
Floor Plans: Ground Floor



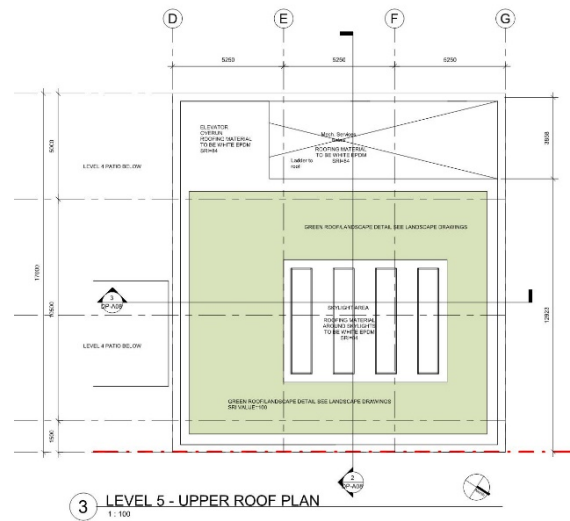
Floor Plans: Level 2



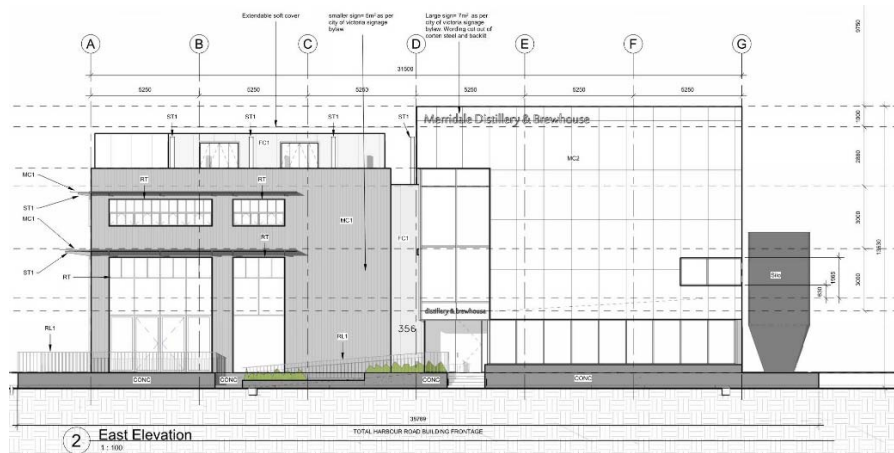




# Roof Plan

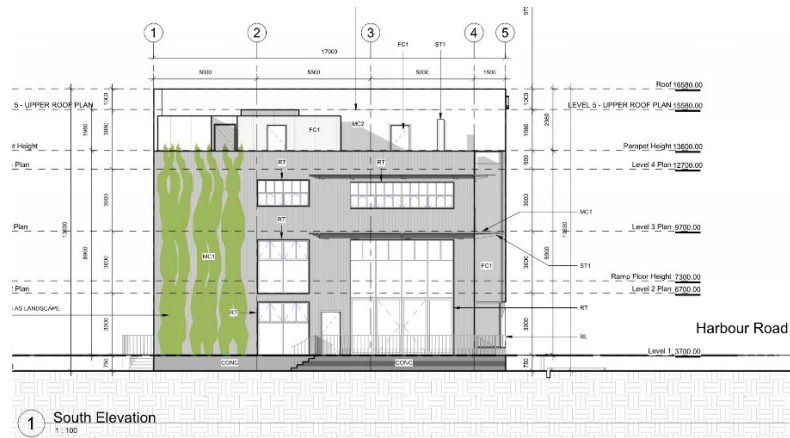


# East Elevation (Harbour Road)





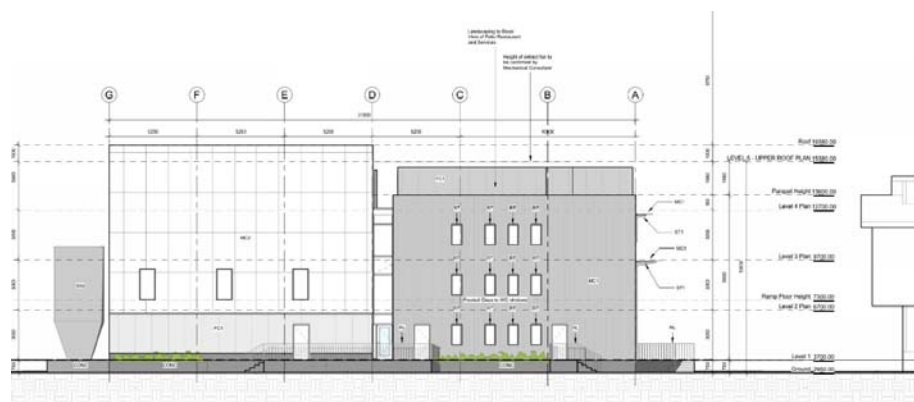
# South Elevation



1 South Elevation  
1:100



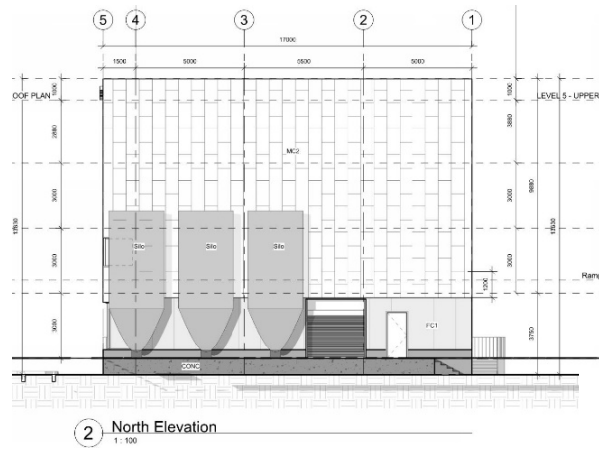
# West Elevation



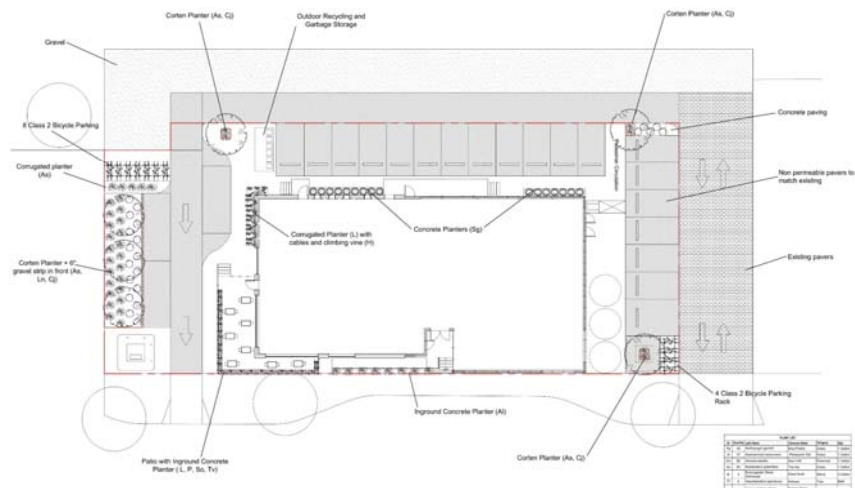
1 West Elevation  
1:100



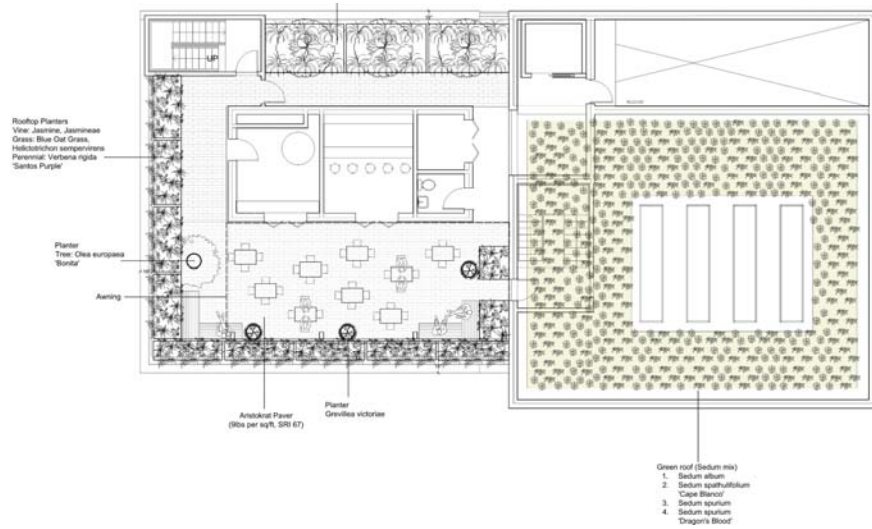
# North Elevation



# Landscape Plan



### Roof Top Landscape Plan



### Render: Harbour Road



## Render



NORTH PERSPECTIVE



WEST PERSPECTIVE



## Materials

### METAL CLADDING:

- MC1: VERTICAL CORRUGATED GALVANISED (OR SIMILAR) STEEL - GREY COLOUR
- MC2: VERTICAL WEATHERING STEEL, EXPOSED FASTENERS

### SEALED CONCRETE:

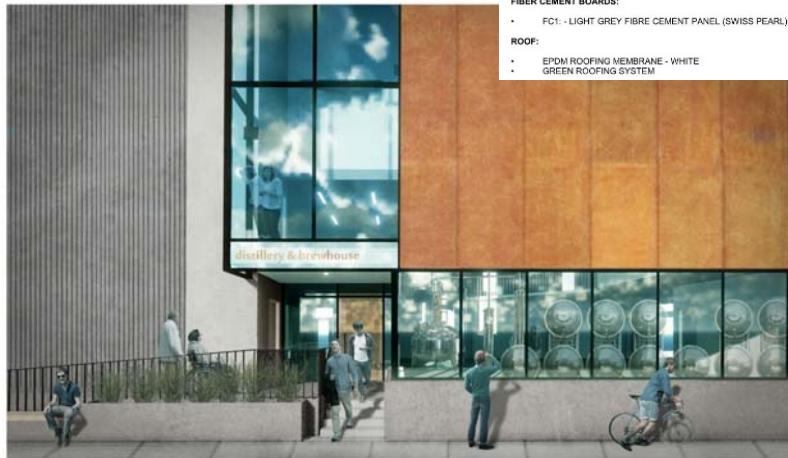
- CONC: SEALED CONCRETE AS FINISH AND BASE STRUCTURE

### FIBER CEMENT BOARDS:

- FC1: LIGHT GREY FIBRE CEMENT PANEL (SWISS PEARL), EXPOSED FASTENERS

### ROOF:

- EPDM ROOFING MEMBRANE - WHITE
- GREEN ROOFING SYSTEM



EAST ELEVATION - DETAILED VIEW

