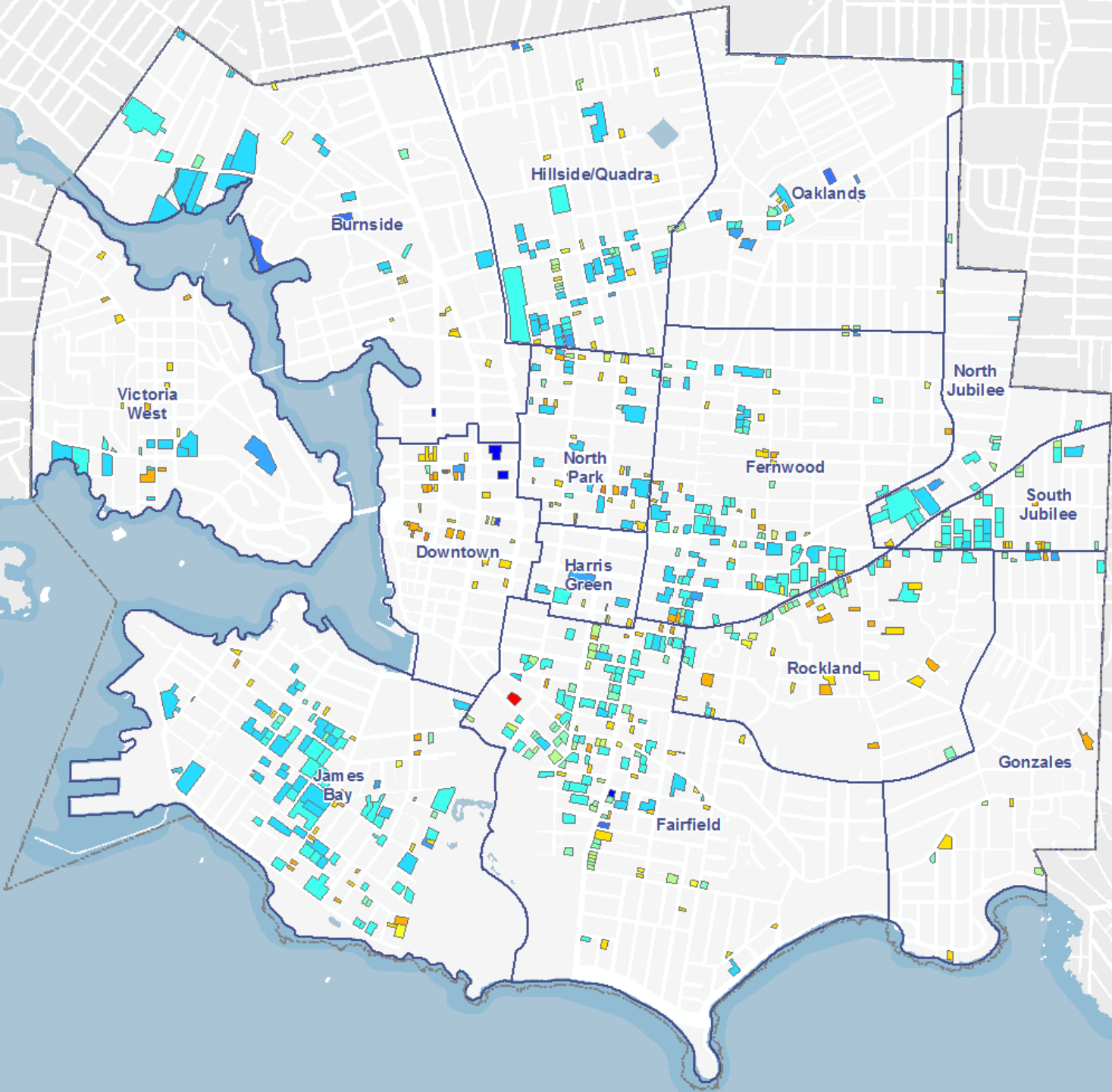


# City of Victoria

## Rental Building Inventory Map

*Age of buildings*



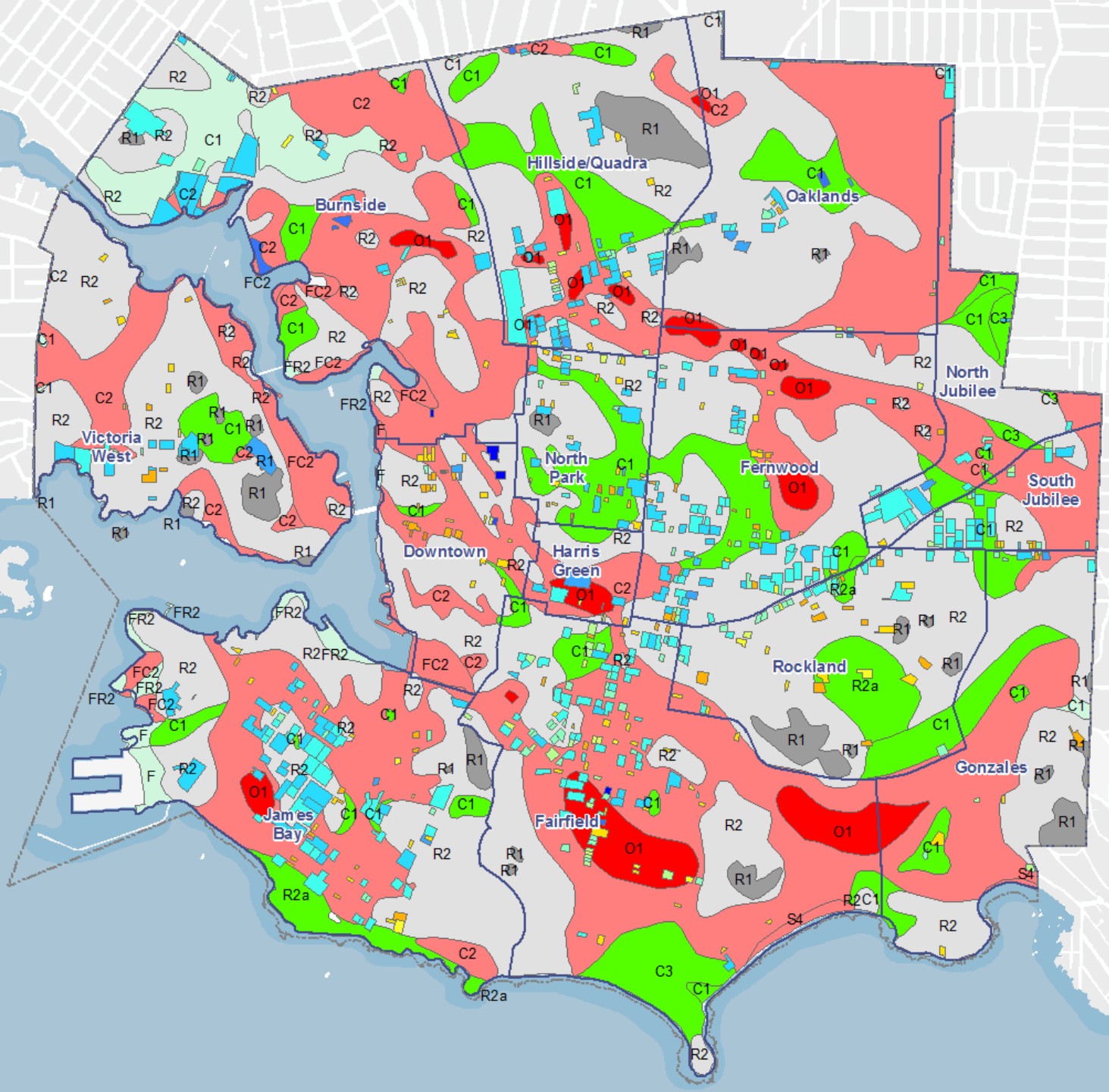
### Rental Building Parcels by Year Built

- 1870-1879
- 1880-1889
- 1890-1899
- 1900-1909
- 1910-1919
- 1920-1929
- 1930-1939
- 1940-1949
- 1950-1959
- 1960-1969
- 1970-1979
- 1980-1989
- 1990-1999
- 2000-2009
- 2010-2018

# City of Victoria

## Rental Building Inventory Map

*Age of buildings +  
soil hazard map*



### Soil hazard map

- 
- B Less vulnerable
- B-C
- C
- C-D
- D-E
- E More vulnerable

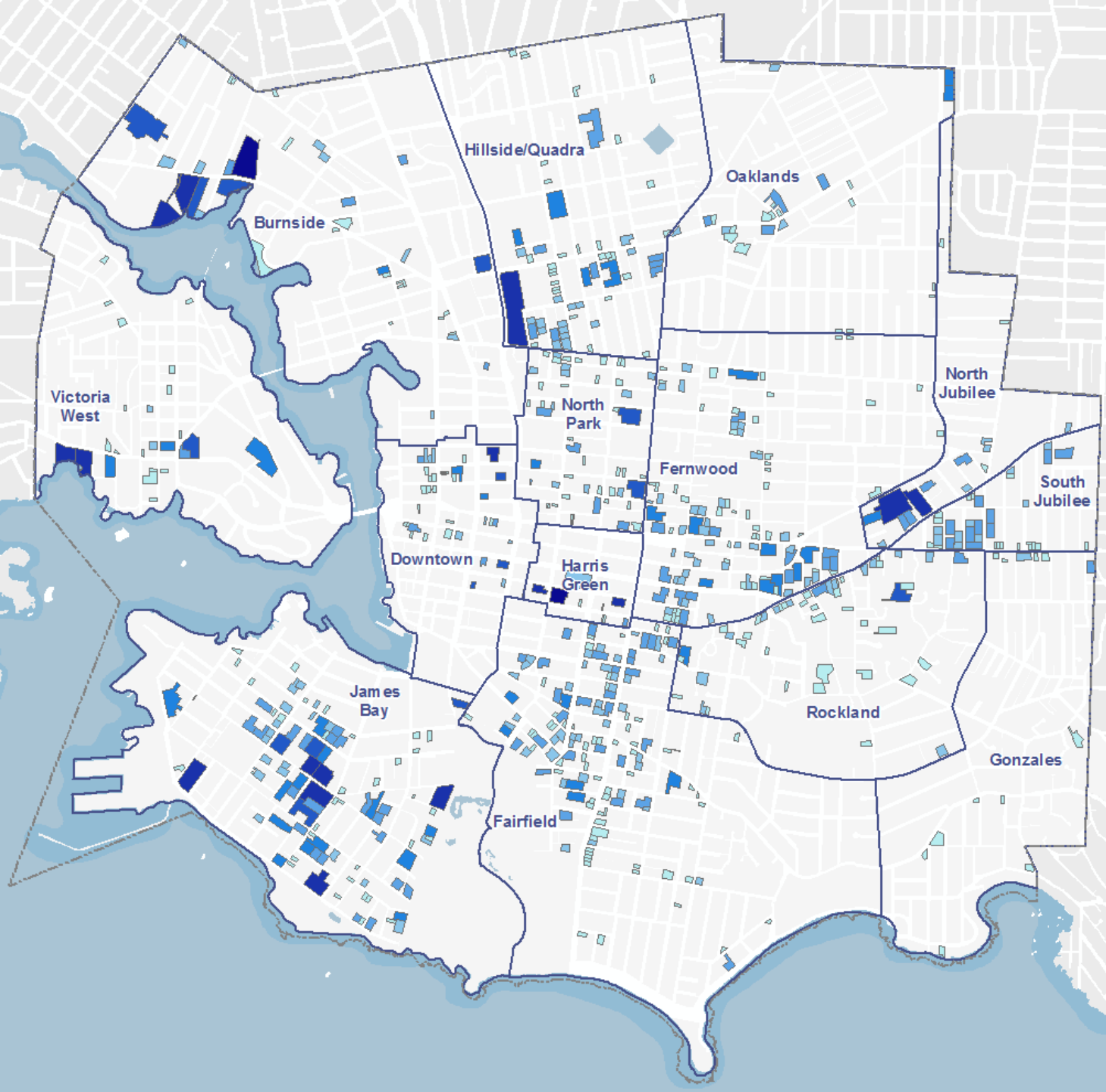
### Rental Building Parcels by Year Built

- 1870-1879
- 1880-1889
- 1890-1899
- 1900-1909
- 1910-1919
- 1920-1929
- 1930-1939
- 1940-1949
- 1950-1959
- 1960-1969
- 1970-1979
- 1980-1989
- 1990-1999
- 2000-2009
- 2010-2018

# City of Victoria

## Rental Building Inventory Map

*Number of units*

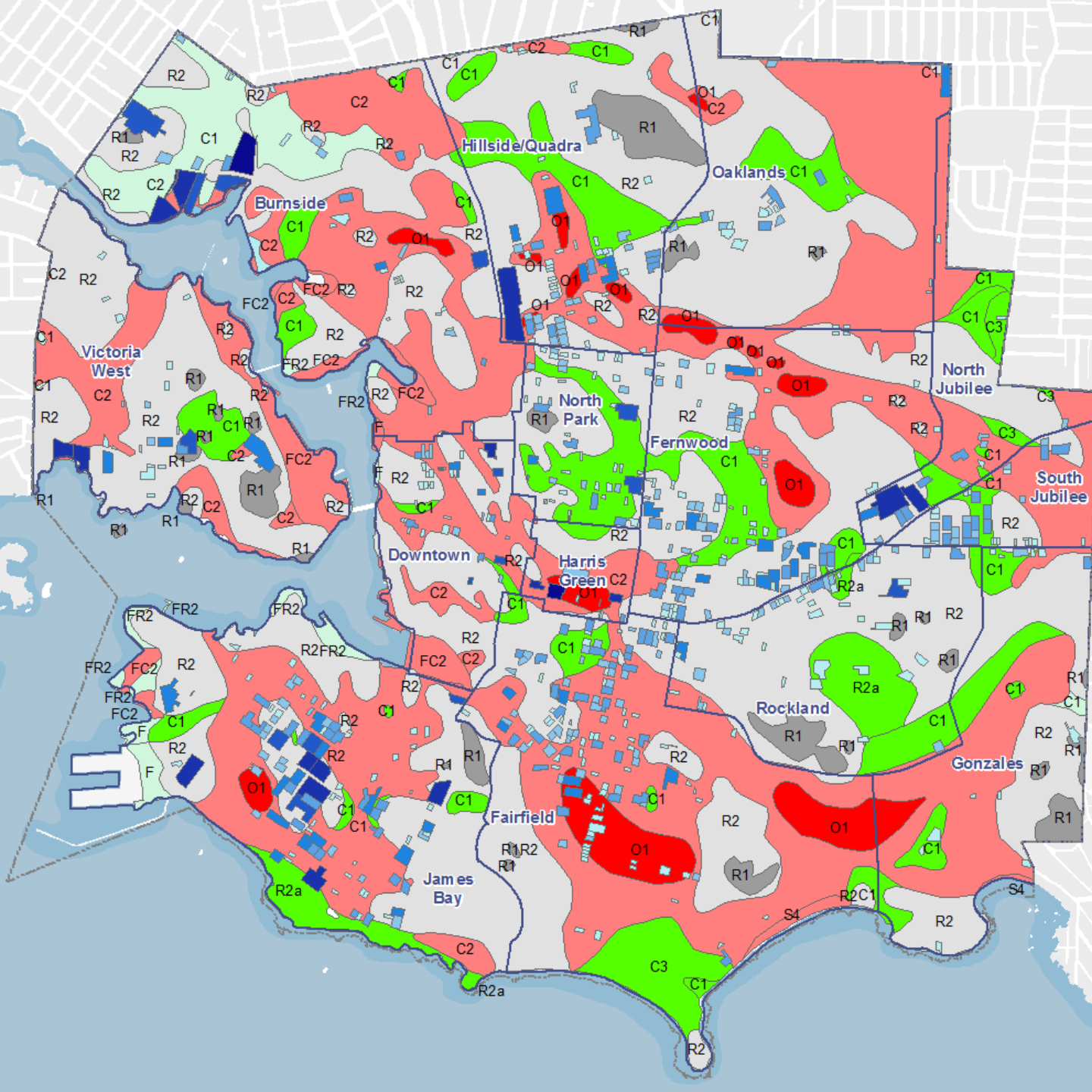


### Rental Building Parcels by # of units

- 1-12
- 13-29
- 30-50
- 51-78
- 79-124
- 125-221
- 222-357

# City of Victoria Rental Building Inventory Map

*Number of units +  
soil hazard map*



## Soil hazard map

- B Less vulnerable
- B-C
- C
- C-D
- D-E
- E More vulnerable

## Rental Building Parcels by # of units

- 1-12
- 13-29
- 30-50
- 51-78
- 79-124
- 125-221
- 222-357

## Rental Building Parcels by Year Built

- 1870-1879
- 1880-1889
- 1890-1899
- 1900-1909
- 1910-1919
- 1920-1929
- 1930-1939
- 1940-1949
- 1950-1959
- 1960-1969
- 1970-1979
- 1980-1989
- 1990-1999
- 2000-2009
- 2010-2018

# City of Victoria

## Rental Building Inventory Map

*Conceptual map showing location of rental buildings by age (indicated by colour) as well as by number of units (indicated by the height of the vertical extrusions). The “taller” the extrusion, the more units the building has.*

*Please note that the vertical extrusions are not indicative of building height or size.*

