

# Rezoning Application for 502 Discovery Street





Photo of Subject Site



## Neighbouring Context



Property Across Store Street (West)



Property Across Pembroke Street (North)

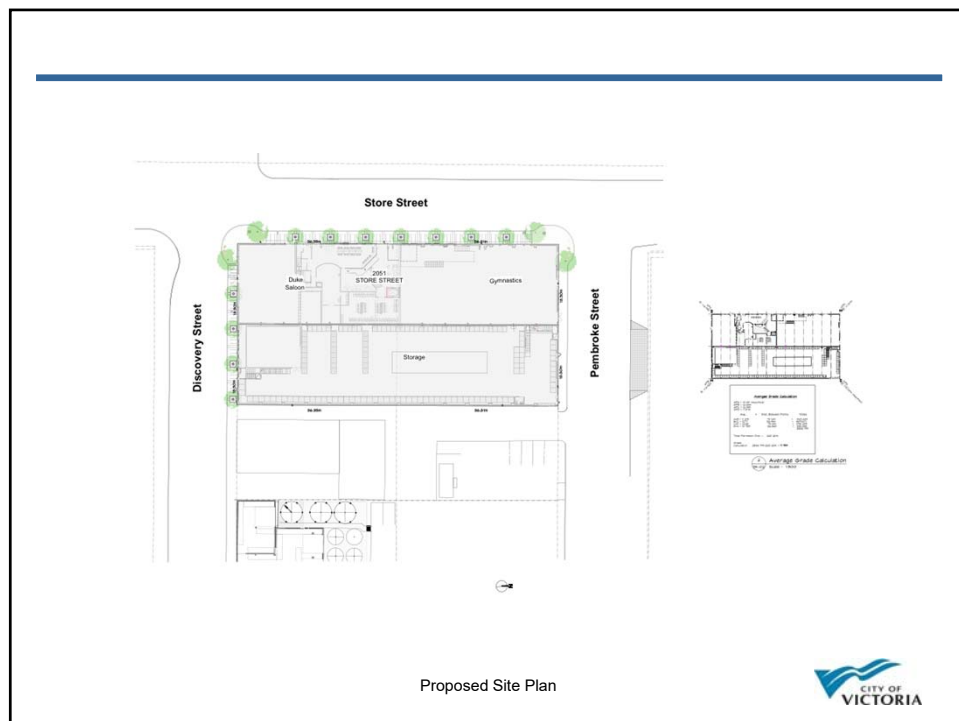
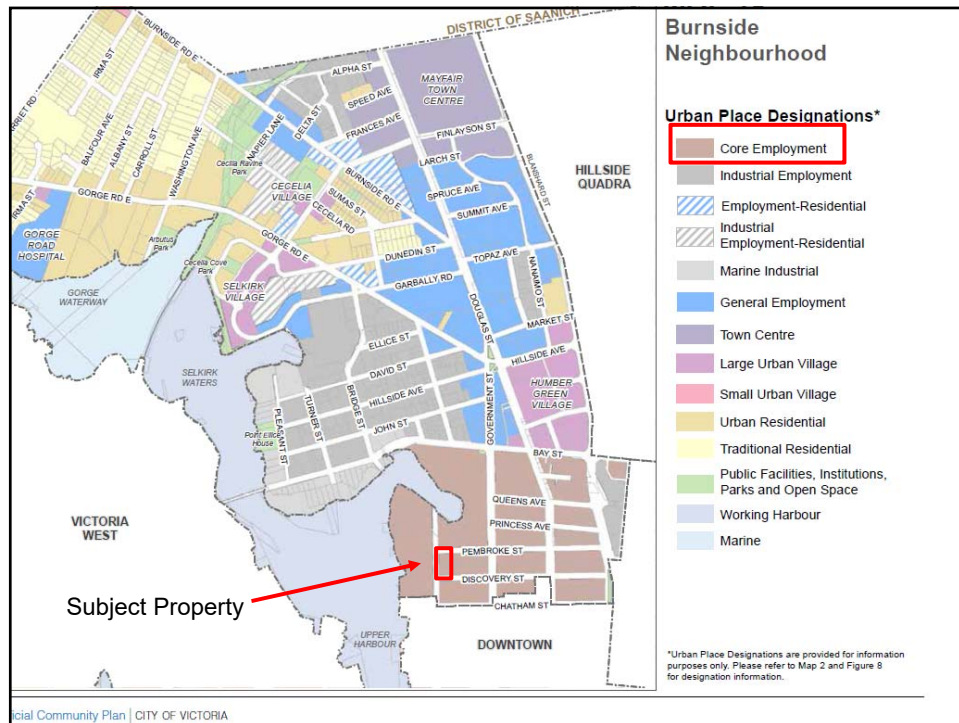


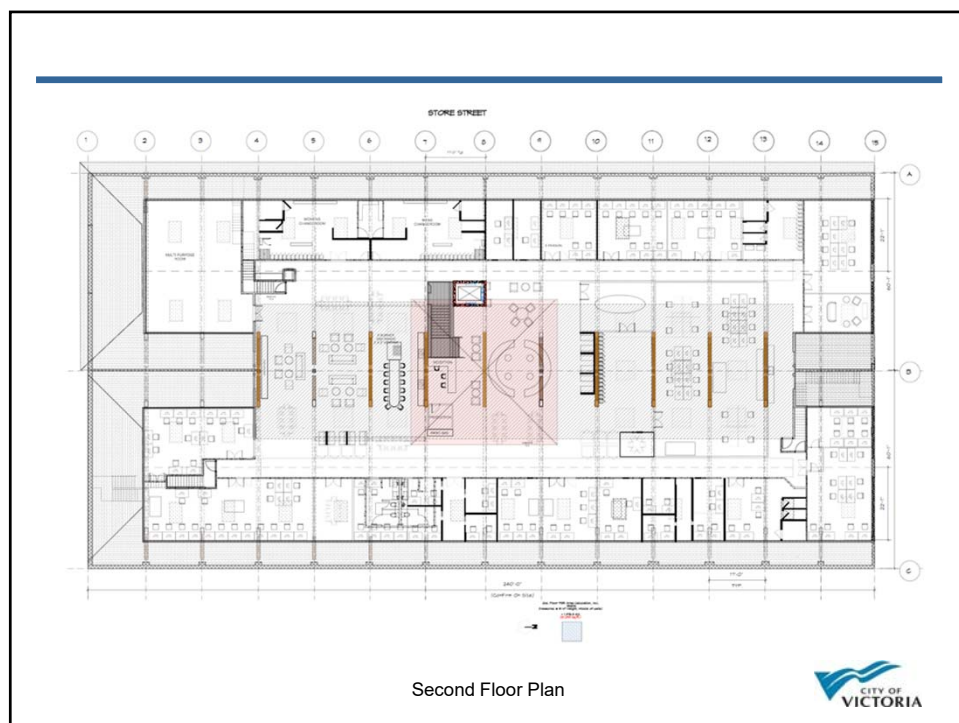
Properties Across Discovery Street (South)



Property Directly East









Proposed Context Massing  
(In relation To Neighbouring Properties)

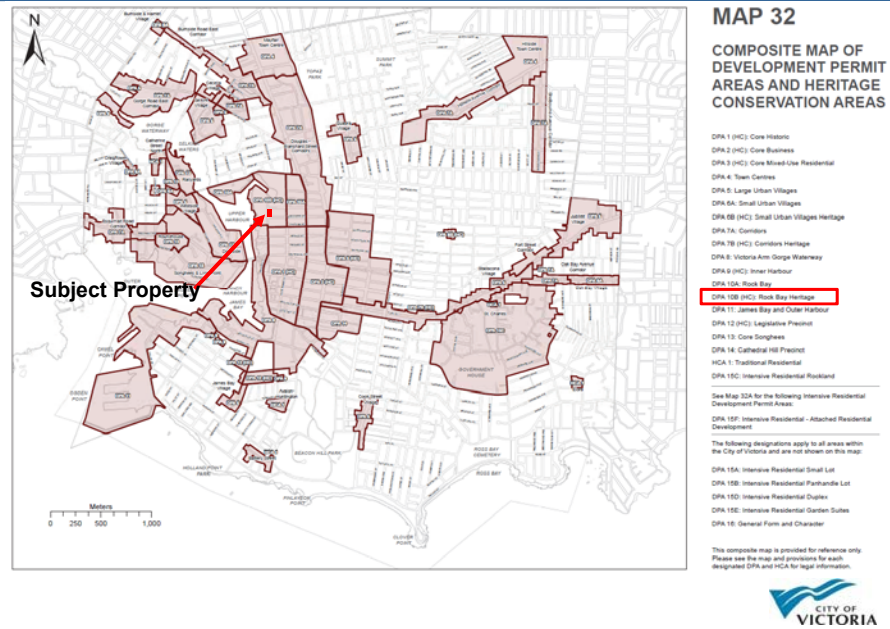


---

## Heritage Alteration Permit and Heritage Designation Application for 502 Discovery Street



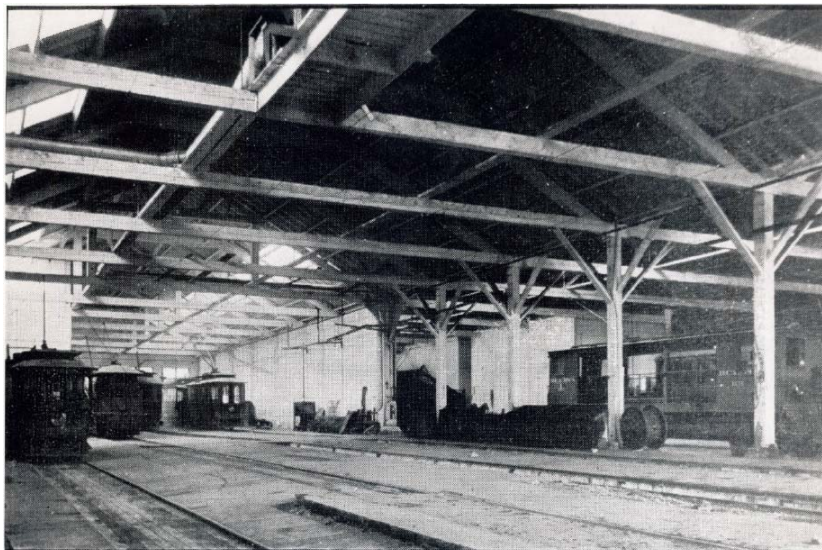
## DPA 10B (HC): Rock Bay Heritage



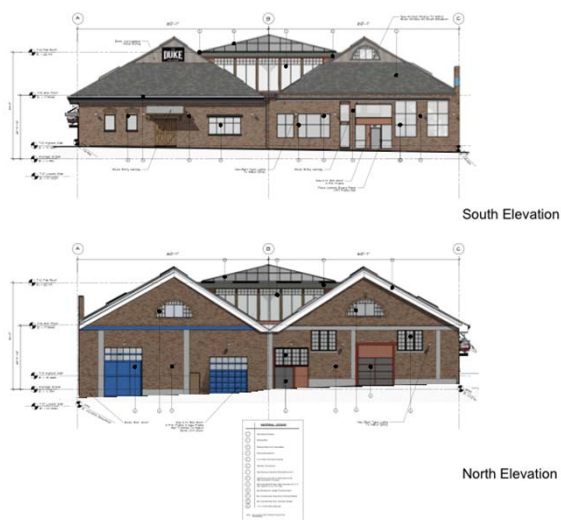
## Existing Building



## Archival Image



## Proposed Alterations



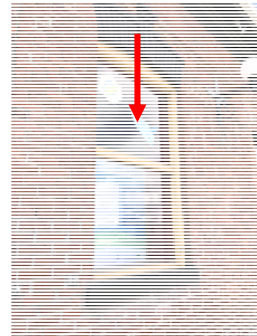
Side Elevations North & South



## Proposed Alterations



Existing



Front Elevation (West)  
Proposed



## Proposed Alterations



View Of Front Entries



Aerial View Of New Connecting Roof



View From Store Street Looking North/East

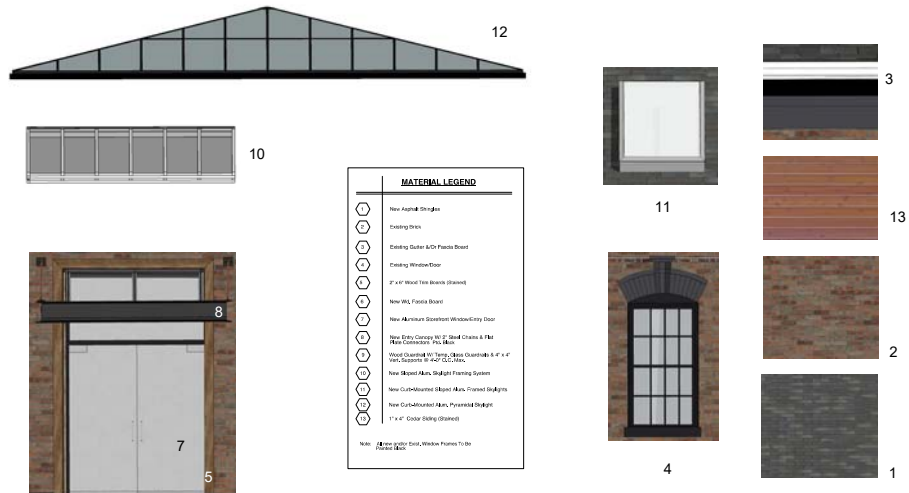


View Of Discovery Street Elevation

Renderings



## Proposed Materials



Colour Board



## Recommendation



Proposed Context Massing  
(In relation To Neighbouring Properties)



