
Rezoning & Development
Permit with Variances
Application for
505, 517, 519/521 Quadra
Street and 931 Convent Place



Subject Site



505 Quadra Street



505 Quadra Street

Subject Site



931 Convent Place



519/521 Quadra Street



517 Quadra Street

Neighbouring Properties



906 Southgate Street

912 Southgate Street



895 Academy Close



Neighbouring Properties



890 Academy Close



522 Quadra Street

Neighbouring Properties



525/527 Quadra Street



920/922 Convent Place

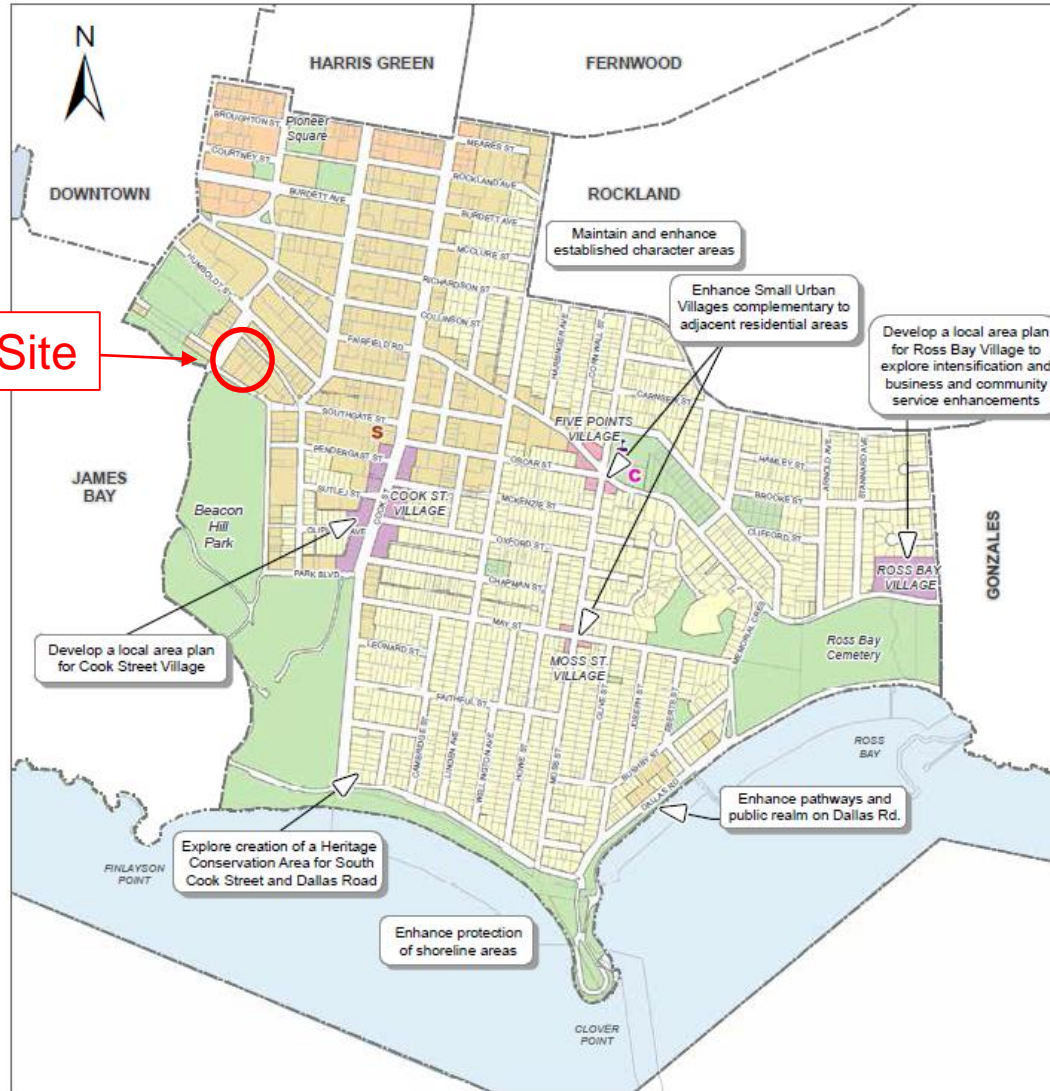


926 Convent Place



933 Convent Place

Official Community Plan



MAP 21
Fairfield Strategic
Directions

Urban Place Designations*

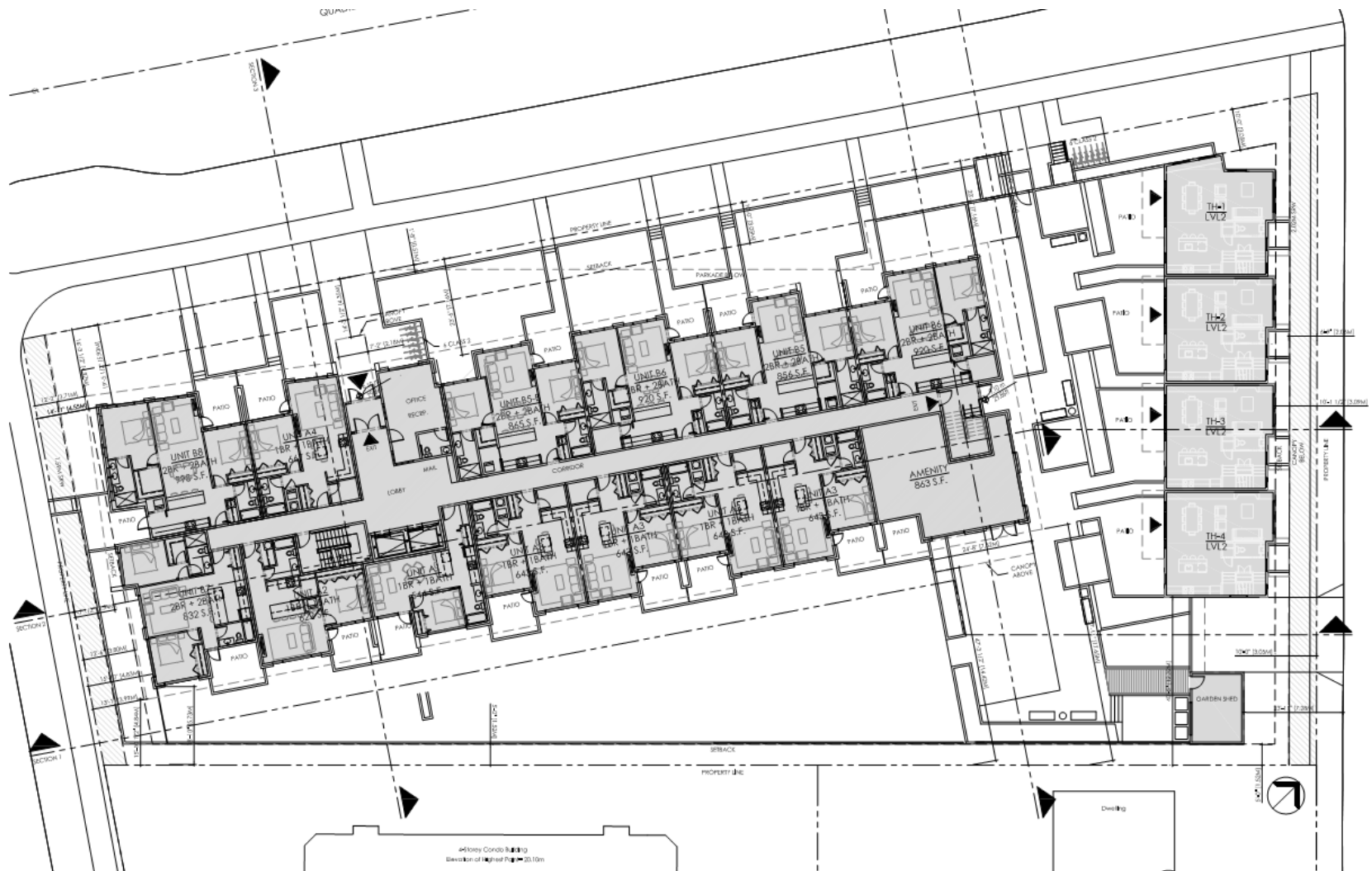
- Core Residential
- Large Urban Village
- Small Urban Village
- Urban Residential
- Traditional Residential
- Public Facilities, Institutions, Parks and Open Space
- Marine

Public Facilities

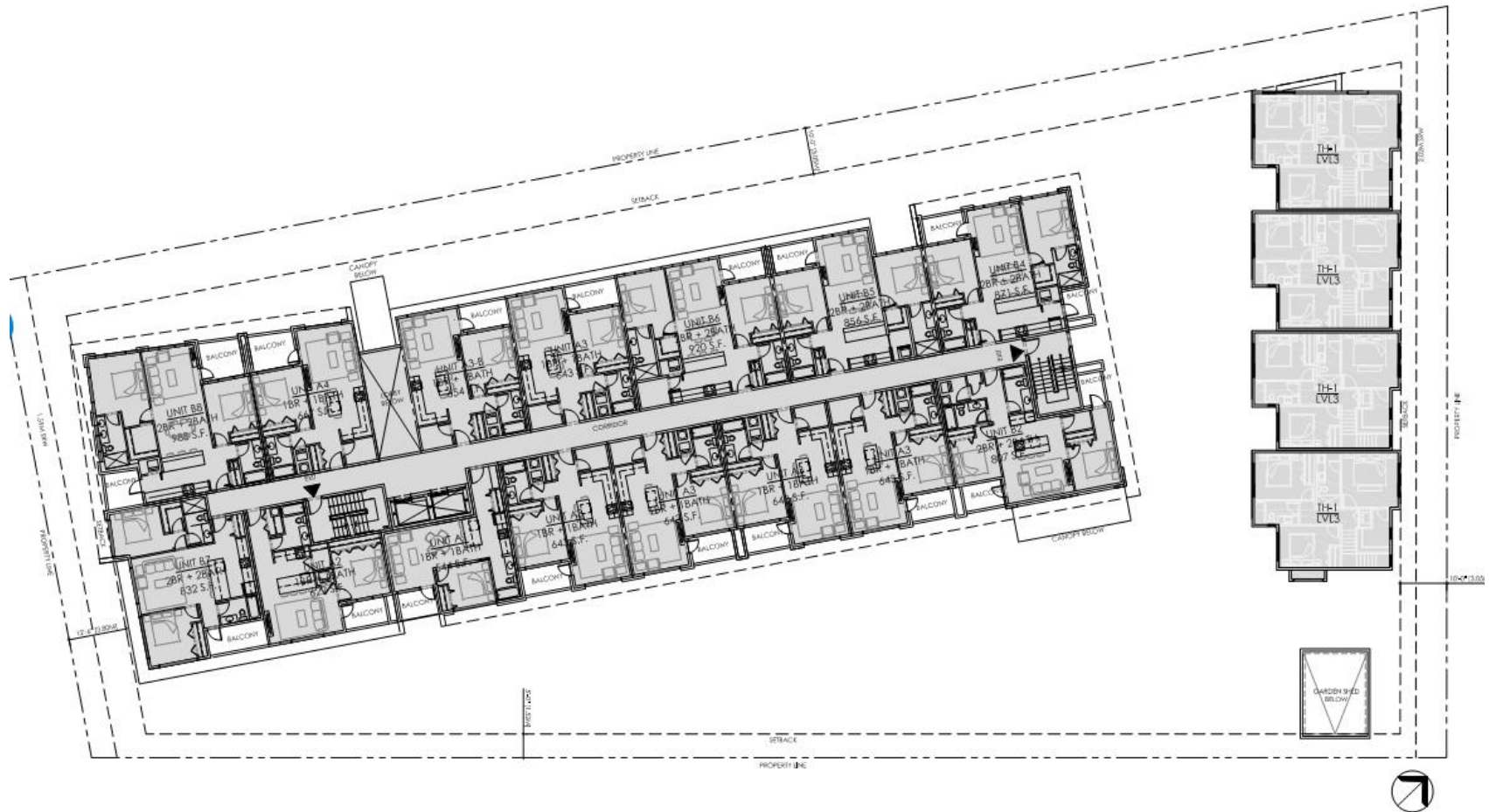
- Existing Public School
- Community Centre
- Seniors Centre

*Urban Place Designations are provided for information purposes only. Please refer to Map 2 and Figure 8 for designation information.

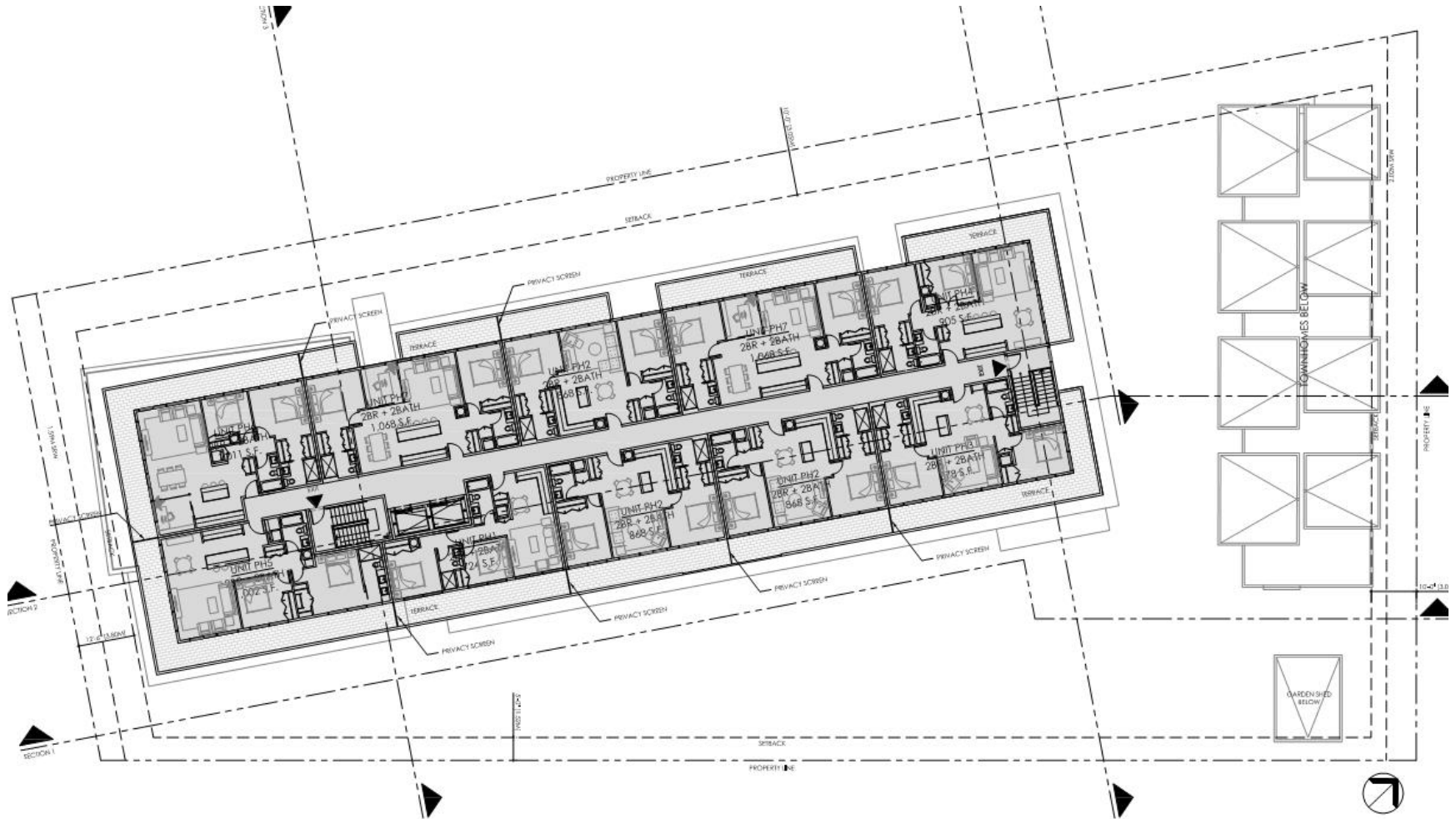
Floor Plans – Level 1



Floor Plans – Level 2



Floor Plans – Level 6



Elevations – Six-Storey Building



Elevations – Six-Storey Building



1 APARTMENT BUILDING NORTH ELEVATION
AND
SCALE: 1/125

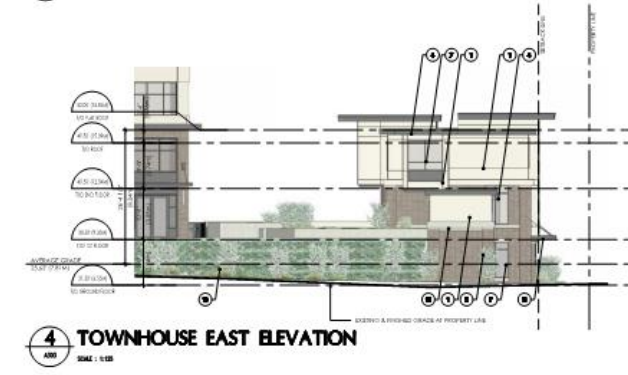


3 NORTH WEST VIEW



2 APARTMENT BUILDING WEST ELEVATION
SCALE: 1/125

Elevations – Townhouses



Street Elevations



1 QUADRA STREET VIEW
KIM SCALE: 1:200



2 SOUTHGATE STREET VIEW
KIM SCALE: 1:200



3 CONVENT PLACE VIEW
KIM SCALE: 1:200

Landscape Plan



LEGEND

- [illegible]

NOTES

- LANDSCAPE AREAS ARE TO BE IRRIGATED WITH A FULLY AUTOMATIC UNDERGROUND IRRIGATION SYSTEM.
- THIS DRAWING IS CONCEPTUAL ONLY AND NOT INTENDED FOR CONSTRUCTION PURPOSES.

