
Rezoning/ Development Permit for 430 PARRY STREET







CONTEXT - AERIAL



CONTEXT – EXISTING SITE & NEIGHBOURS



420 PARRY - SCALE



511 MICHIGAN - CHARACTER



440 PARRY - DETAIL



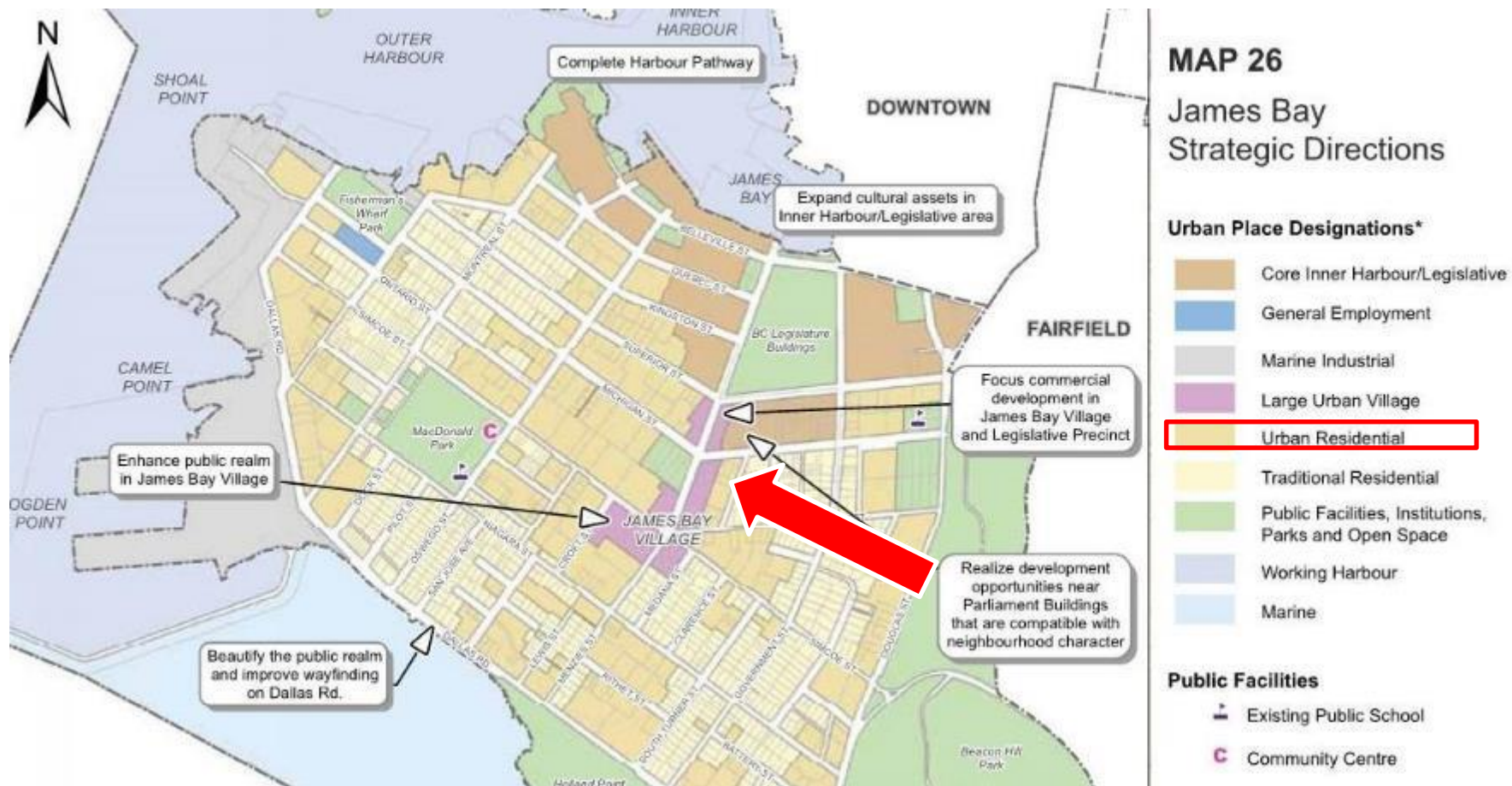
440 PARRY – MATERIALITY, CHARACTER, FRONTAGE



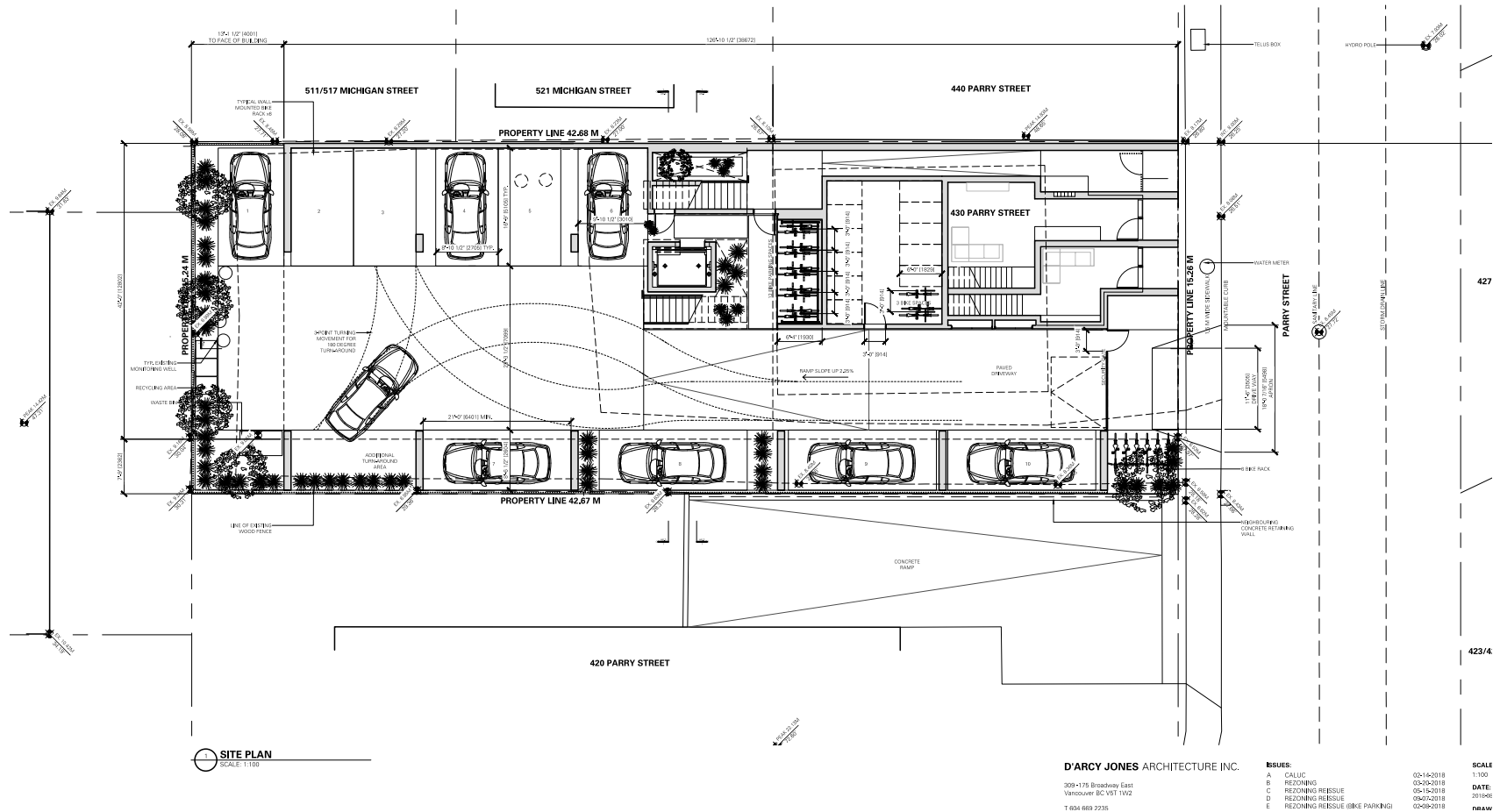
CAPITAL PARK – SCALE

CONTEXT - BUILT

Official Community Plan Map

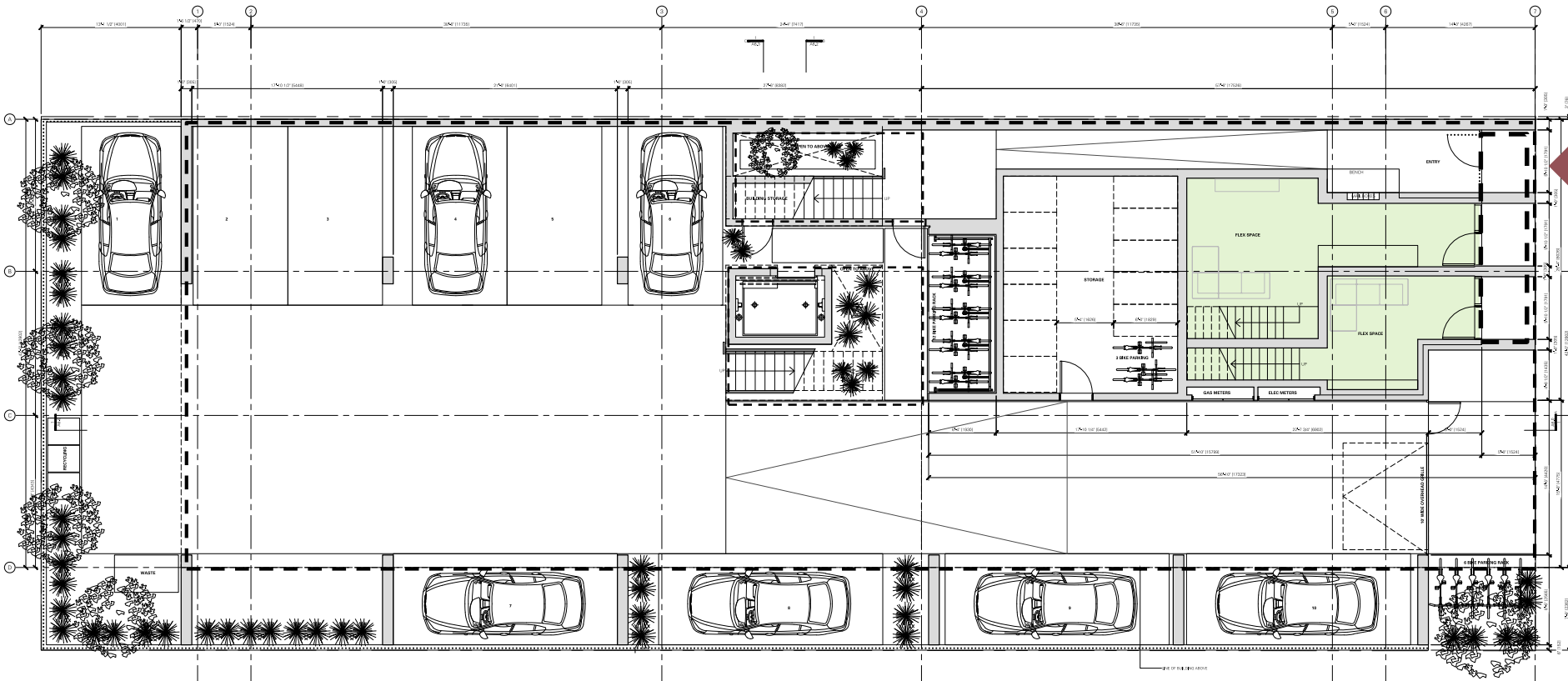


Site Plan



SITE PLAN

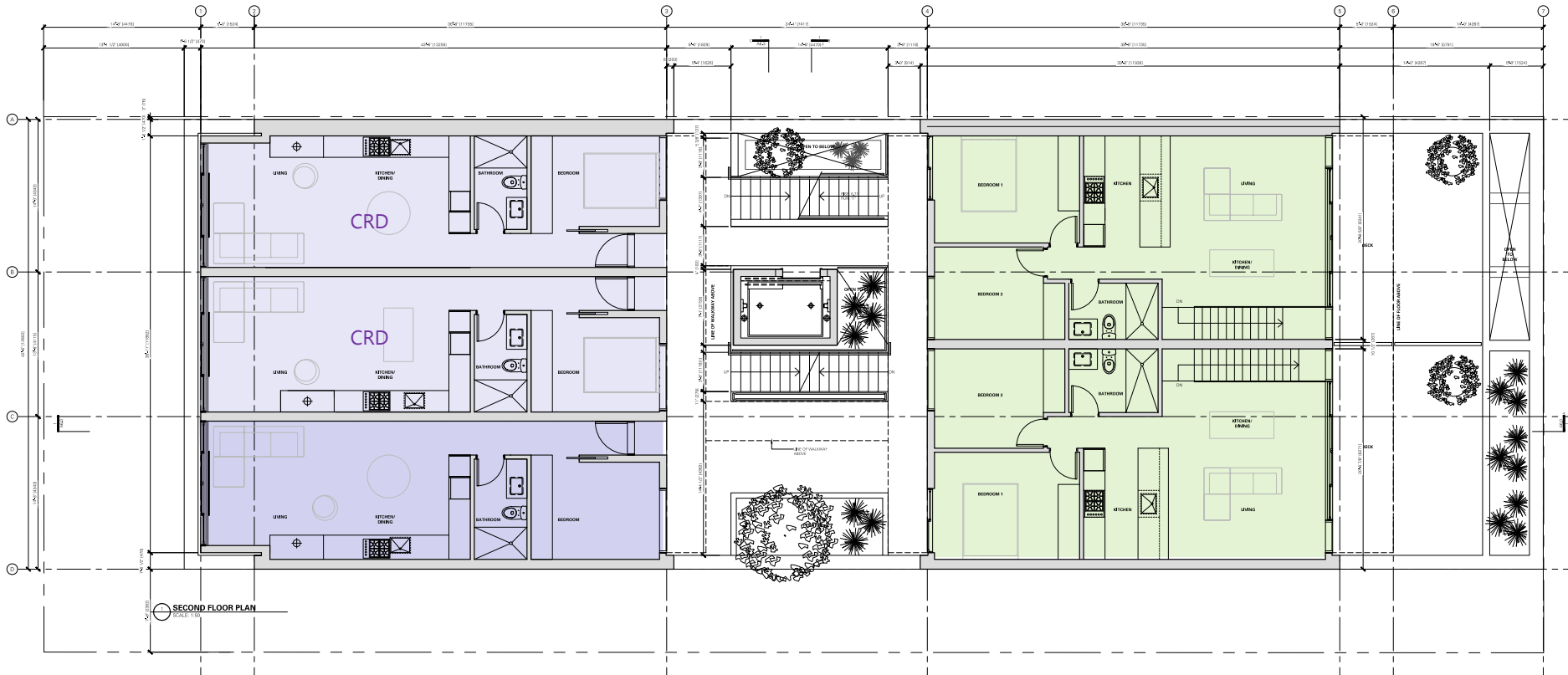
Ground Floor



2 BED + DEN (Ground –Oriented)

MAIN FLOOR PLAN

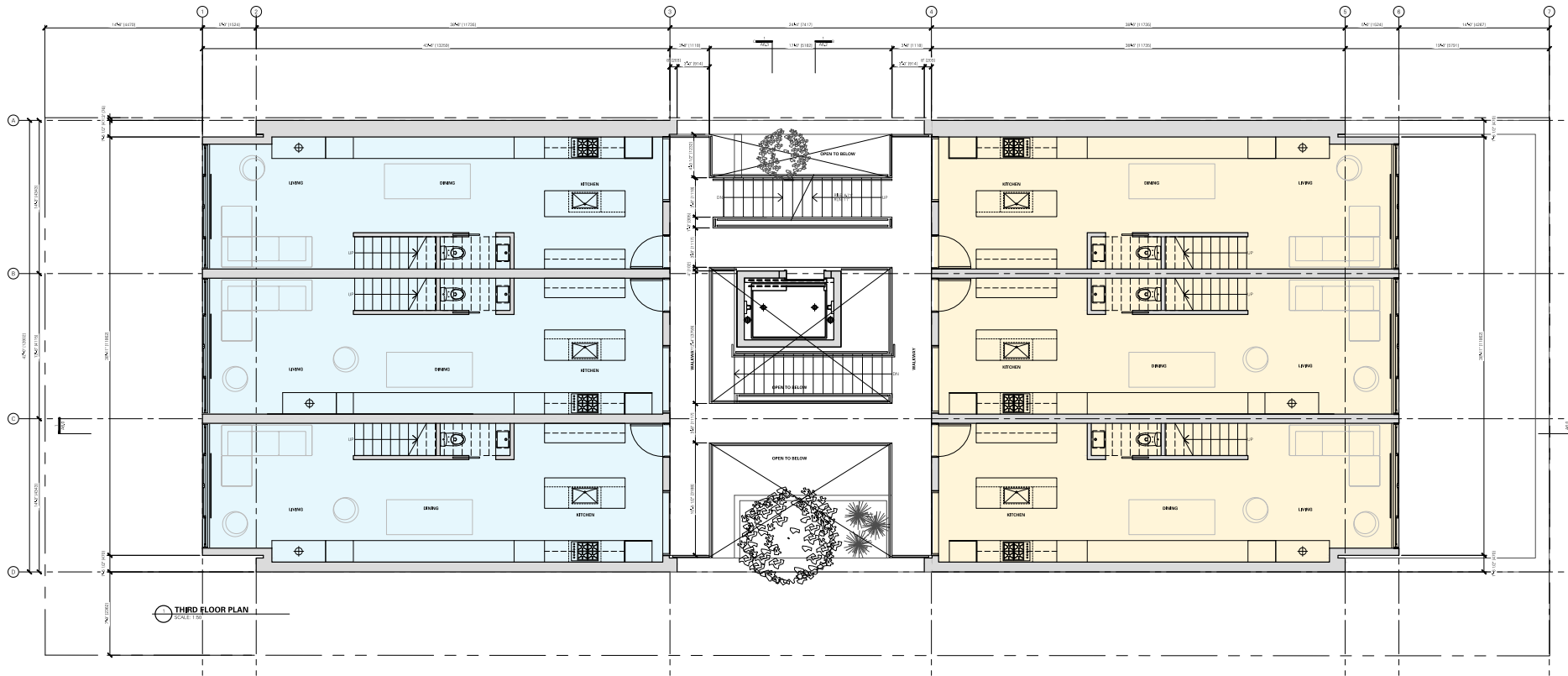
Second Floor



2 BED + DEN (Ground –Oriented)
1 BED (incl. 2 CRD units)

SECOND FLOOR PLAN

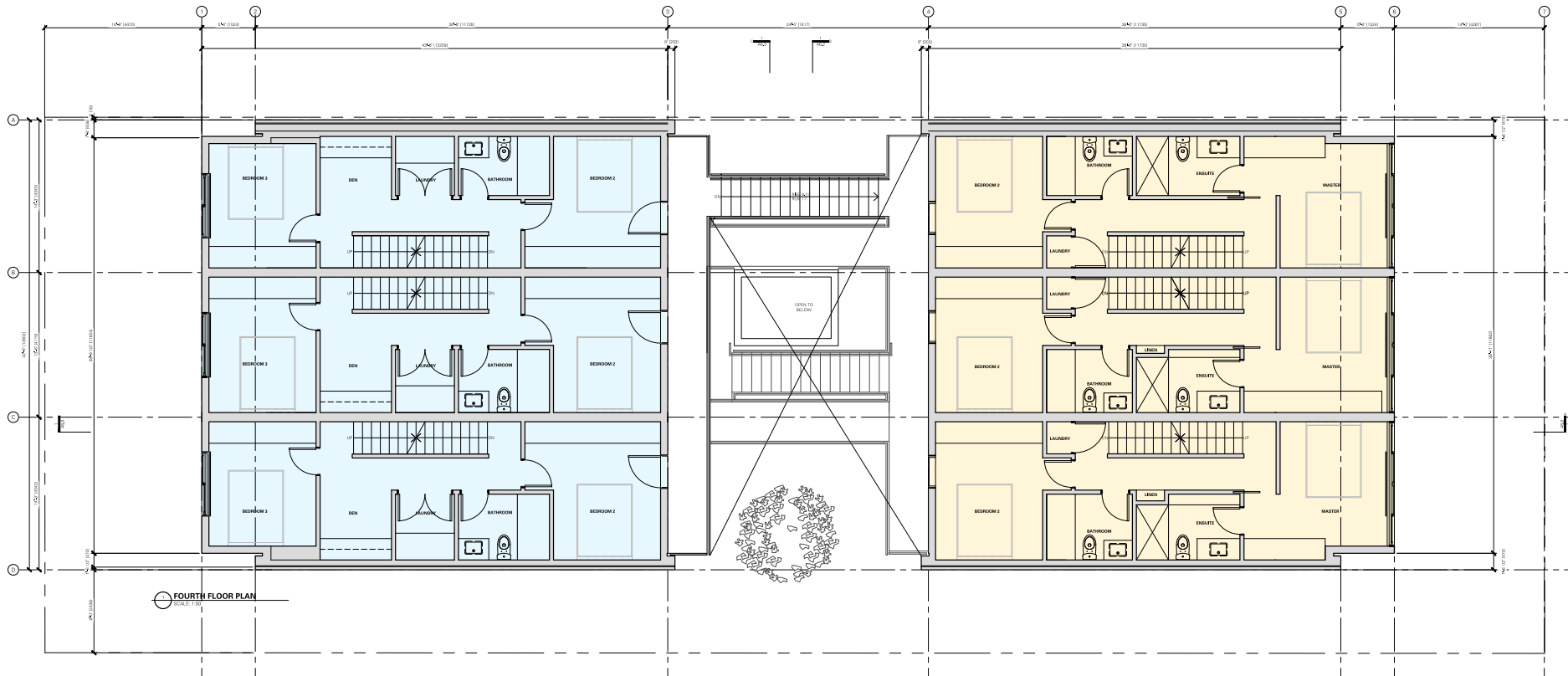
Third Floor



2 BEDROOM
3 BEDROOM + DEN

THIRD FLOOR PLAN

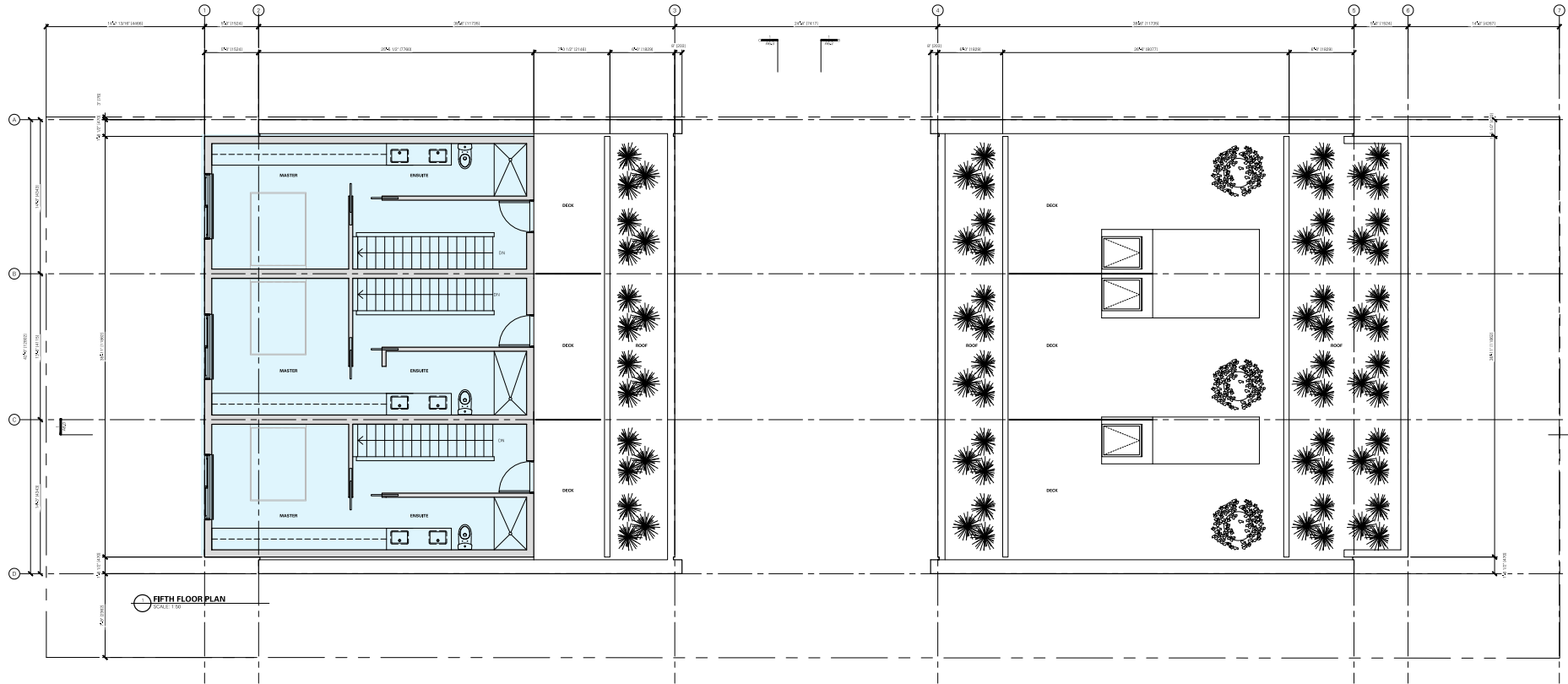
Fourth Floor



2 BEDROOM
3 BEDROOM + DEN

FOURTH FLOOR PLAN

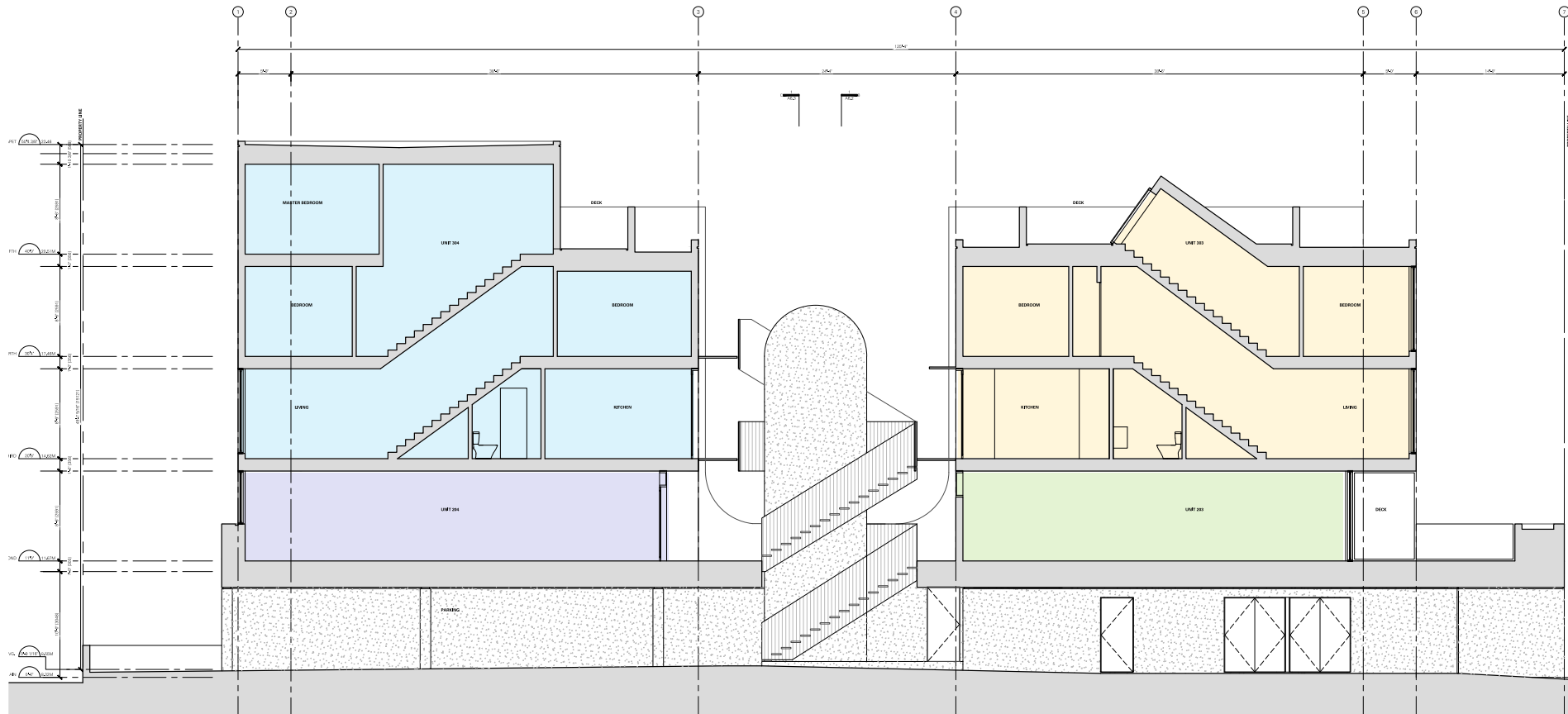
Fifth Floor



3 BEDROOM + DEN

5TH FLOOR/ ROOF PLAN

Section



2 BEDROOM + DEN (Ground-Oriented)

1 BEDROOM

2 BEDROOM

3 BEDROOM + DEN

BUILDING SECTION - LONGITUDINAL

Front Elevation



EAST ELEVATION

Rear Elevation



WEST ELEVATION

South Elevation



SOUTH ELEVATION

North Elevation



NORTH ELEVATION

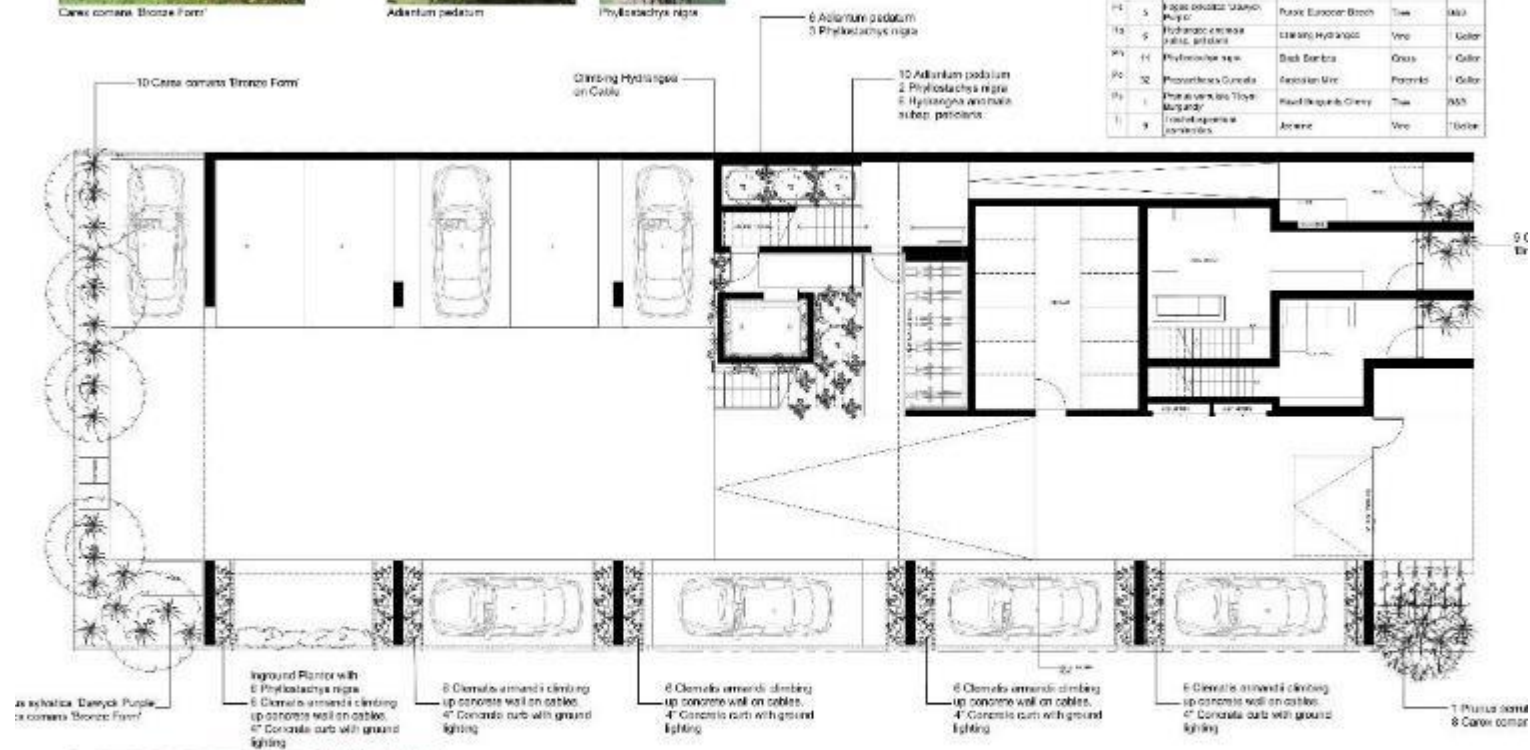
Street Elevation



STREET ELEVATION



| | | | | | |
|------|-----|----------------|-----------------|---------|--------|
| A | a | Acacia saligna | Salvia argentea | 1700 | 1800 |
| A1 | 12 | Acacia saligna | Madropera form | Parents | Galley |
| A2 | 15 | Acacia saligna | Madropera form | Parents | Galley |
| A3 | 18 | Acacia saligna | Madropera form | Parents | Galley |
| A4 | 21 | Acacia saligna | Madropera form | Parents | Galley |
| A5 | 24 | Acacia saligna | Madropera form | Parents | Galley |
| A6 | 27 | Acacia saligna | Madropera form | Parents | Galley |
| A7 | 30 | Acacia saligna | Madropera form | Parents | Galley |
| A8 | 33 | Acacia saligna | Madropera form | Parents | Galley |
| A9 | 36 | Acacia saligna | Madropera form | Parents | Galley |
| A10 | 39 | Acacia saligna | Madropera form | Parents | Galley |
| A11 | 42 | Acacia saligna | Madropera form | Parents | Galley |
| A12 | 45 | Acacia saligna | Madropera form | Parents | Galley |
| A13 | 48 | Acacia saligna | Madropera form | Parents | Galley |
| A14 | 51 | Acacia saligna | Madropera form | Parents | Galley |
| A15 | 54 | Acacia saligna | Madropera form | Parents | Galley |
| A16 | 57 | Acacia saligna | Madropera form | Parents | Galley |
| A17 | 60 | Acacia saligna | Madropera form | Parents | Galley |
| A18 | 63 | Acacia saligna | Madropera form | Parents | Galley |
| A19 | 66 | Acacia saligna | Madropera form | Parents | Galley |
| A20 | 69 | Acacia saligna | Madropera form | Parents | Galley |
| A21 | 72 | Acacia saligna | Madropera form | Parents | Galley |
| A22 | 75 | Acacia saligna | Madropera form | Parents | Galley |
| A23 | 78 | Acacia saligna | Madropera form | Parents | Galley |
| A24 | 81 | Acacia saligna | Madropera form | Parents | Galley |
| A25 | 84 | Acacia saligna | Madropera form | Parents | Galley |
| A26 | 87 | Acacia saligna | Madropera form | Parents | Galley |
| A27 | 90 | Acacia saligna | Madropera form | Parents | Galley |
| A28 | 93 | Acacia saligna | Madropera form | Parents | Galley |
| A29 | 96 | Acacia saligna | Madropera form | Parents | Galley |
| A30 | 99 | Acacia saligna | Madropera form | Parents | Galley |
| A31 | 102 | Acacia saligna | Madropera form | Parents | Galley |
| A32 | 105 | Acacia saligna | Madropera form | Parents | Galley |
| A33 | 108 | Acacia saligna | Madropera form | Parents | Galley |
| A34 | 111 | Acacia saligna | Madropera form | Parents | Galley |
| A35 | 114 | Acacia saligna | Madropera form | Parents | Galley |
| A36 | 117 | Acacia saligna | Madropera form | Parents | Galley |
| A37 | 120 | Acacia saligna | Madropera form | Parents | Galley |
| A38 | 123 | Acacia saligna | Madropera form | Parents | Galley |
| A39 | 126 | Acacia saligna | Madropera form | Parents | Galley |
| A40 | 129 | Acacia saligna | Madropera form | Parents | Galley |
| A41 | 132 | Acacia saligna | Madropera form | Parents | Galley |
| A42 | 135 | Acacia saligna | Madropera form | Parents | Galley |
| A43 | 138 | Acacia saligna | Madropera form | Parents | Galley |
| A44 | 141 | Acacia saligna | Madropera form | Parents | Galley |
| A45 | 144 | Acacia saligna | Madropera form | Parents | Galley |
| A46 | 147 | Acacia saligna | Madropera form | Parents | Galley |
| A47 | 150 | Acacia saligna | Madropera form | Parents | Galley |
| A48 | 153 | Acacia saligna | Madropera form | Parents | Galley |
| A49 | 156 | Acacia saligna | Madropera form | Parents | Galley |
| A50 | 159 | Acacia saligna | Madropera form | Parents | Galley |
| A51 | 162 | Acacia saligna | Madropera form | Parents | Galley |
| A52 | 165 | Acacia saligna | Madropera form | Parents | Galley |
| A53 | 168 | Acacia saligna | Madropera form | Parents | Galley |
| A54 | 171 | Acacia saligna | Madropera form | Parents | Galley |
| A55 | 174 | Acacia saligna | Madropera form | Parents | Galley |
| A56 | 177 | Acacia saligna | Madropera form | Parents | Galley |
| A57 | 180 | Acacia saligna | Madropera form | Parents | Galley |
| A58 | 183 | Acacia saligna | Madropera form | Parents | Galley |
| A59 | 186 | Acacia saligna | Madropera form | Parents | Galley |
| A60 | 189 | Acacia saligna | Madropera form | Parents | Galley |
| A61 | 192 | Acacia saligna | Madropera form | Parents | Galley |
| A62 | 195 | Acacia saligna | Madropera form | Parents | Galley |
| A63 | 198 | Acacia saligna | Madropera form | Parents | Galley |
| A64 | 201 | Acacia saligna | Madropera form | Parents | Galley |
| A65 | 204 | Acacia saligna | Madropera form | Parents | Galley |
| A66 | 207 | Acacia saligna | Madropera form | Parents | Galley |
| A67 | 210 | Acacia saligna | Madropera form | Parents | Galley |
| A68 | 213 | Acacia saligna | Madropera form | Parents | Galley |
| A69 | 216 | Acacia saligna | Madropera form | Parents | Galley |
| A70 | 219 | Acacia saligna | Madropera form | Parents | Galley |
| A71 | 222 | Acacia saligna | Madropera form | Parents | Galley |
| A72 | 225 | Acacia saligna | Madropera form | Parents | Galley |
| A73 | 228 | Acacia saligna | Madropera form | Parents | Galley |
| A74 | 231 | Acacia saligna | Madropera form | Parents | Galley |
| A75 | 234 | Acacia saligna | Madropera form | Parents | Galley |
| A76 | 237 | Acacia saligna | Madropera form | Parents | Galley |
| A77 | 240 | Acacia saligna | Madropera form | Parents | Galley |
| A78 | 243 | Acacia saligna | Madropera form | Parents | Galley |
| A79 | 246 | Acacia saligna | Madropera form | Parents | Galley |
| A80 | 249 | Acacia saligna | Madropera form | Parents | Galley |
| A81 | 252 | Acacia saligna | Madropera form | Parents | Galley |
| A82 | 255 | Acacia saligna | Madropera form | Parents | Galley |
| A83 | 258 | Acacia saligna | Madropera form | Parents | Galley |
| A84 | 261 | Acacia saligna | Madropera form | Parents | Galley |
| A85 | 264 | Acacia saligna | Madropera form | Parents | Galley |
| A86 | 267 | Acacia saligna | Madropera form | Parents | Galley |
| A87 | 270 | Acacia saligna | Madropera form | Parents | Galley |
| A88 | 273 | Acacia saligna | Madropera form | Parents | Galley |
| A89 | 276 | Acacia saligna | Madropera form | Parents | Galley |
| A90 | 279 | Acacia saligna | Madropera form | Parents | Galley |
| A91 | 282 | Acacia saligna | Madropera form | Parents | Galley |
| A92 | 285 | Acacia saligna | Madropera form | Parents | Galley |
| A93 | 288 | Acacia saligna | Madropera form | Parents | Galley |
| A94 | 291 | Acacia saligna | Madropera form | Parents | Galley |
| A95 | 294 | Acacia saligna | Madropera form | Parents | Galley |
| A96 | 297 | Acacia saligna | Madropera form | Parents | Galley |
| A97 | 300 | Acacia saligna | Madropera form | Parents | Galley |
| A98 | 303 | Acacia saligna | Madropera form | Parents | Galley |
| A99 | 306 | Acacia saligna | Madropera form | Parents | Galley |
| A100 | 309 | Acacia saligna | Madropera form | Parents | Galley |





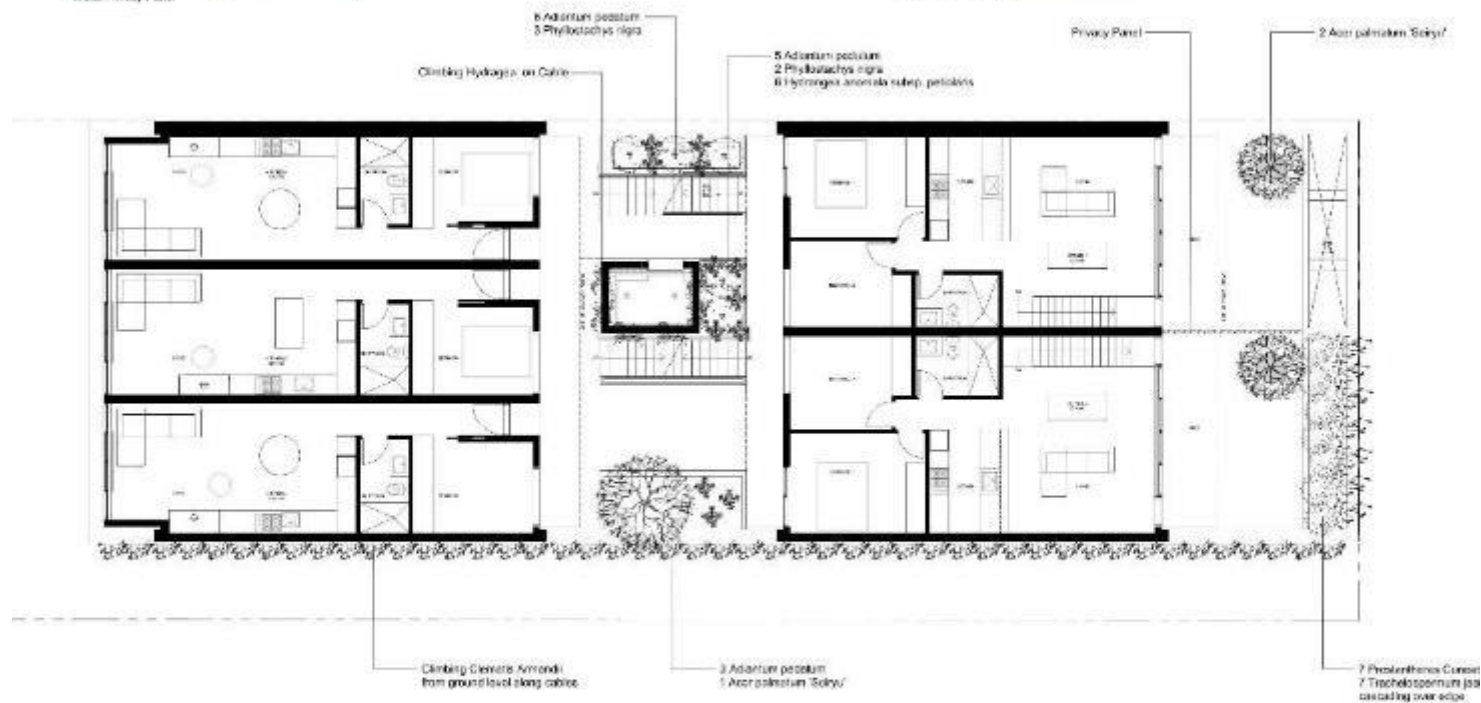
Metal Privacy Panel



Acer palmatum 'Scolyt'



Urbal Planter

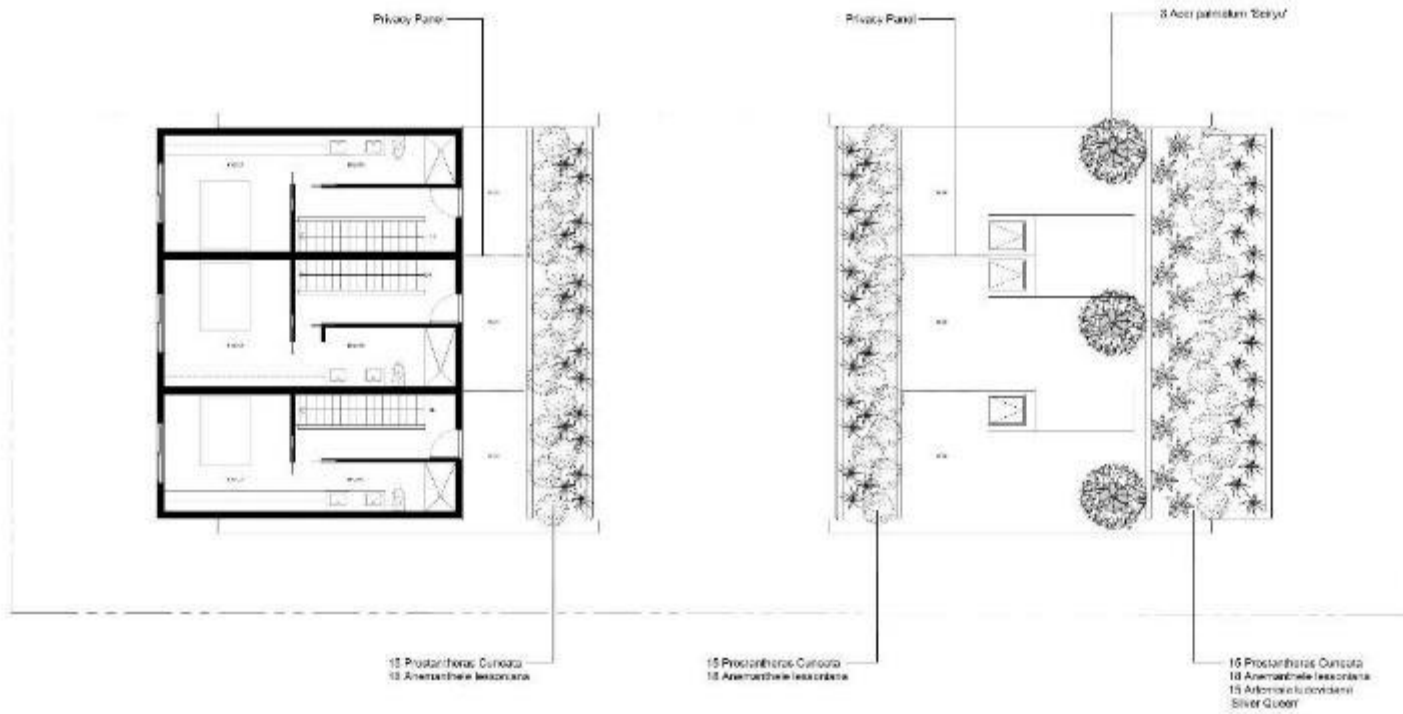


Prostanthema Canadensis

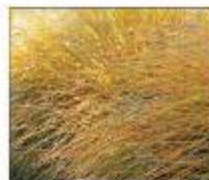


Trachelospermum jasminoides

LANDSCAPE – SECOND FLOOR COURTYARD & PATIOS



Prostanthera Cuneata



Anemathale lessortiana



Anemathale lessortiana
'Silver Queen'

LANDSCAPE – ROOF PLAN



AERIAL VIEW



VIEW FROM N-E



STREETSIDE ENTRY VIEW



VIEW FROM S-E



COURTYARD VIEW FROM SOUTH



COURTYARD VIEW FROM MICHIGAN STREET



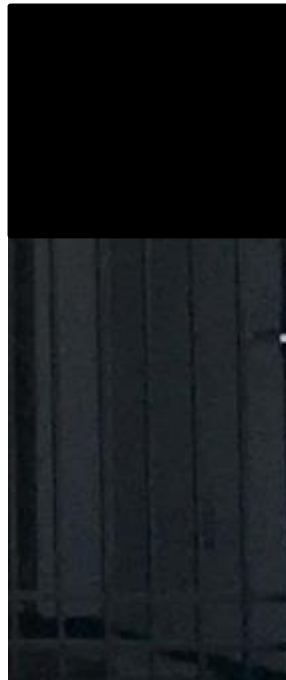
VIEW FROM CORNER OF PARRY & MICHIGAN STREETS



UNITED CHURCH DETAIL



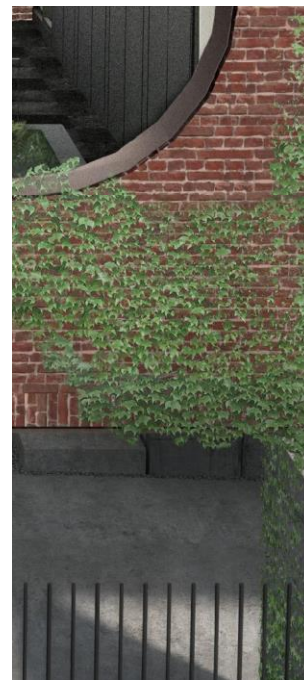
440 DETAIL



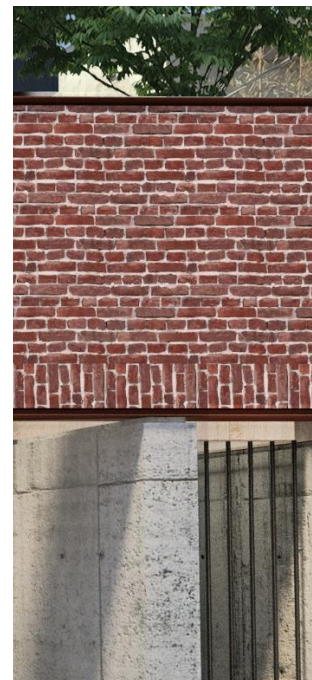
IRON/
BLACK METAL DETAILS



BRICK DETAIL



DETAIL GUARD, CLADDING
& CURVE



DETAIL CORNICE, SOLDIER
COURSE & CONTEMPORARY
BASE

CONTEXT – PALETTE & CHARACTER