

840 Fort Street- Proposed Designation



840 Fort Street- Proposed Designation



840 Fort Street- Proposed Designation

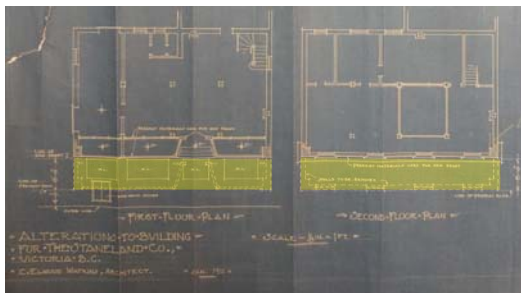


September 27, 2018

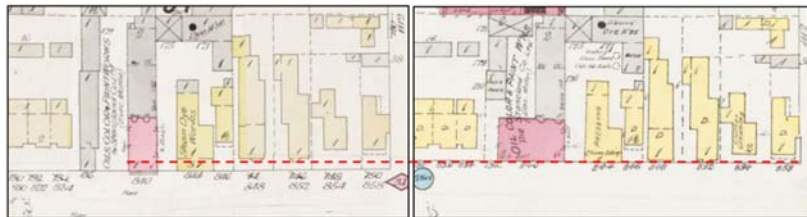


September 27, 2018

840 Fort Street- Proposed Designation



- Permit issued for 1-storey frame structure in 1908, followed by a permit for a 2-storey building in 1909 for the Stanland Paint Co.
- The building was altered in 1911 in accordance with designs by architect Charles Elwood Watkins. Alterations appear to have been triggered by a road-widening between 1909 and 1911



1909

1911

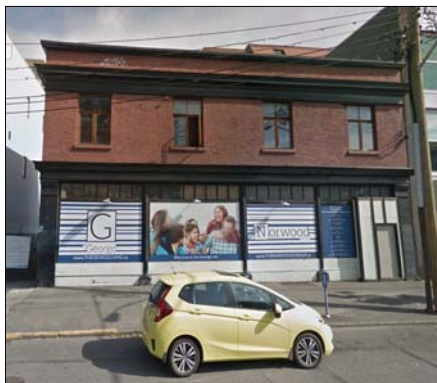
840 Fort Street- The Sawyer Building

- 2-storey Edwardian style building valued for its continuous use as a commercial building and as a representative example of the Edwardian commercial style
- Uses:
 - 1909-1946: Staneland Co. Paint Supplies
 - 1946-1969: Mowat Grant Ltd. Paint Supplies
 - 1969-2005: Sawyer Sewing Machines & Miscellaneous
- Victoria Heritage Thematic Framework: Gateway Economy



Appearance in 1960

840 Fort Street- Proposed Designation



A local government may, by bylaw, designate real property in whole or in part as protected under this section if the local government considers that

(a) the property has **heritage value** or **heritage character**

Test for heritage designation: **Does the property have heritage value or heritage character?**

Heritage Value: historical, cultural, aesthetic, scientific or educational worth or usefulness of property or an area

Heritage Character: the overall effect produced by traits or features which give property or an area a distinctive quality or appearance

(Local Government Act, Schedule- Definitions & Other Interpretation Matters)

840 Fort Street- The Sawyer Building

- **Heritage Value:** Historical worth for association with career of Charles Elwood Watkins, the Fort Street commercial corridor, Staneland Paint Co.. Aesthetic value for Edwardian Commercial design
- **Heritage Character:** Edwardian design & detailing with sheet metal cornices defining floor levels, generously proportioned windows along ground floor and evenly spaced 2nd storey windows
- **Uses:**
 - 1909-1946: Staneland Co. Paint Supplies
 - 1946-1969: Mowat Grant Ltd. Paint Supplies
 - 1969-2005: Sawyer Sewing Machines & Miscellaneous
- Victoria Heritage Thematic Framework: Gateway Economy



840 Fort Street- Proposed Character Defining Elements

- Location along the heritage corridor of Fort Street connecting the downtown core to Rockland and Jubilee neighbourhoods, enhancing the diverse character of the local streetscape
- Modest, functional, two-storey Edwardian design and detailing
- Triple sheet metal cornices defining the street front façade
- Cast iron columns delineating the storefront glazing
- Proportionally spaced, second storey window openings
- Nearly a century of continuous use as a commercial retail space



c. 1960