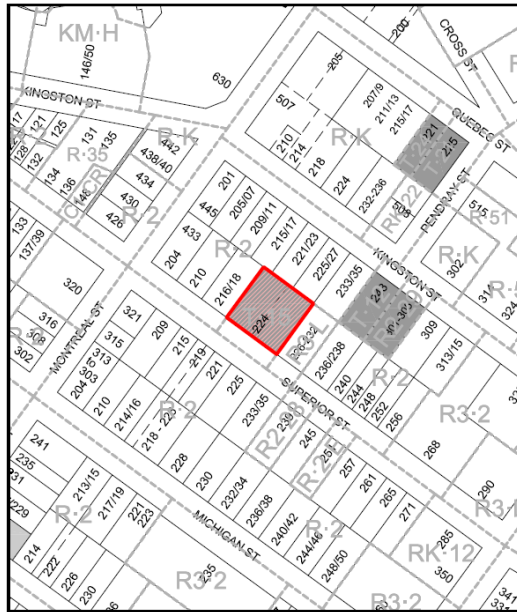

Heritage Alteration Permit
Application with Variances
for
224 Superior Street



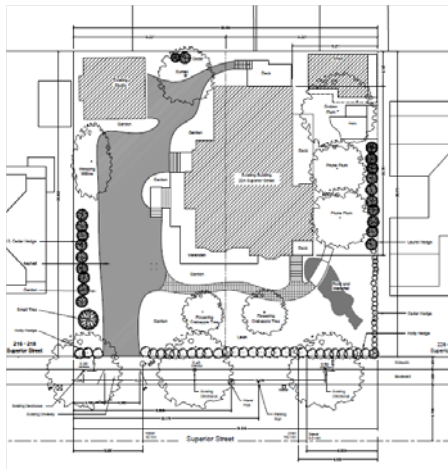
224 Superior Street | Heritage-Designated



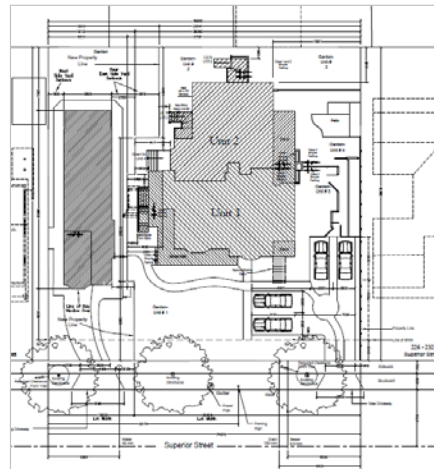
Location | James Bay Neighbourhood



Concurrent with Rezoning and DPA



Existing Site Plan



Proposed Site Plan



Convert to four self-contained units



Series of alterations since 1986



1986



2017

Numerous front entry
stair reconfigurations



Series of alterations since 1986



Structure raised and new foundation with finished basement in 1990



Series of alterations since 1986



1986
Northwest
Corner

2017
Northwest
Corner

Changes to fenestration openings



Series of alterations since 1986



1986
Southeast
Corner

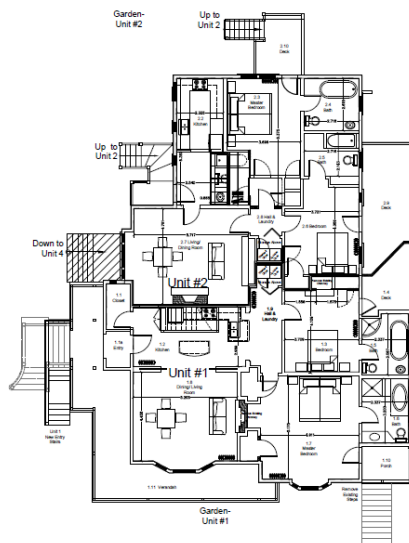


2017
Southeast
Corner

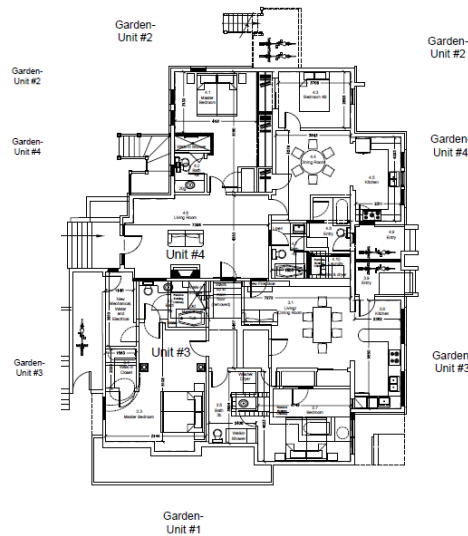
Stair addition with several alterations,
deck, and 2002-05 addition



Alterations to existing interior floor plan



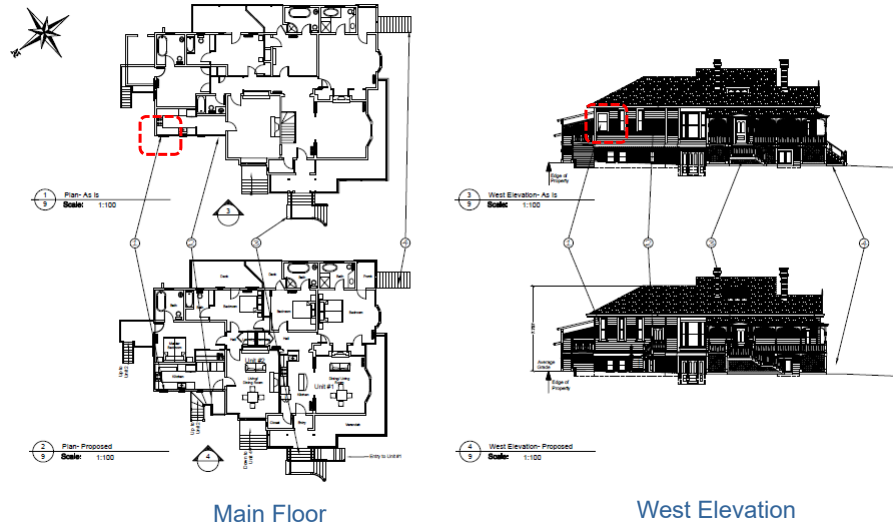
First Floor Plan



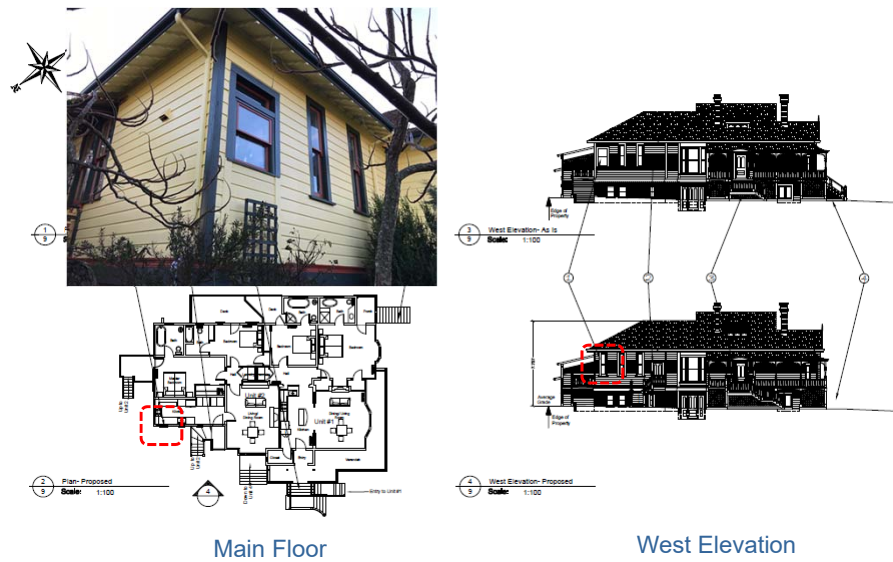
Lower Floor Plan



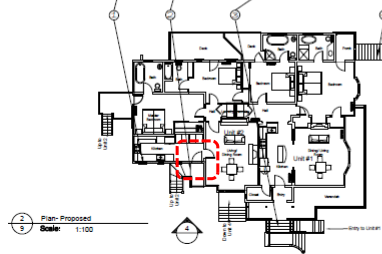
Exterior Alterations | Window replacement



Exterior Alterations | Window replacement



Exterior Alterations | New door and entry stair



2 Plan-Proposed
Scale: 1:100

Main Floor



1 West Elevation-As Is
Scale: 1:100

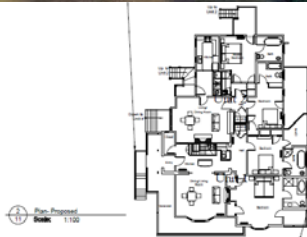
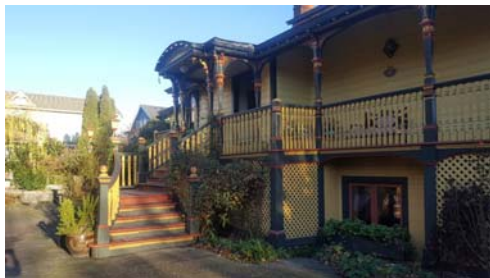


3 West Elevation-Proposed
Scale: 1:100

West Elevation



Exterior Alterations | Reconfigure non-original stairs



1 Plan-Proposed
Scale: 1:100

Main Floor



2 South Elevation-As Is
Scale: 1:100

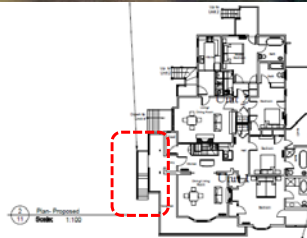


4 South Elevation-Proposed
Scale: 1:100

West Elevation



Exterior Alterations | Reconfigure non-original stairs



Main Floor



3 South Elevation- As Is
Scale: 1:100

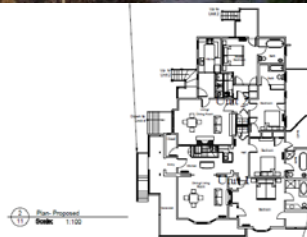
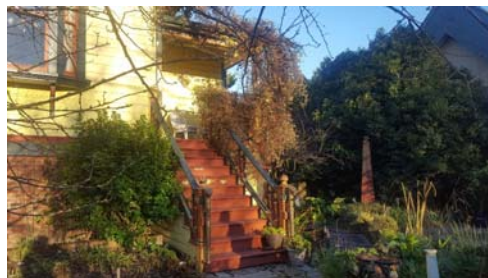


4 South Elevation- Proposed
Scale: 1:100

West Elevation



Exterior Alterations | Removal of non-original stairs



Main Floor



3 South Elevation- As Is
Scale: 1:100

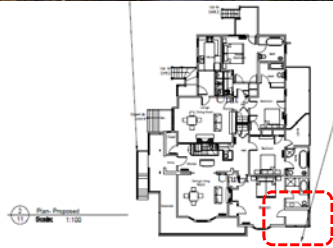
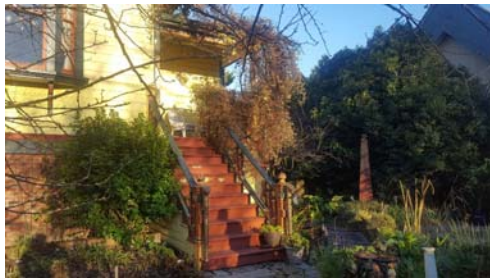


4 South Elevation- Proposed
Scale: 1:100

West Elevation



Exterior Alterations | Removal of non-original stairs



Main Floor



3 South Elevation-As Is
Scale: 1:100

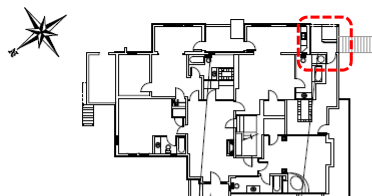


4 South Elevation-Proposed
Scale: 1:100

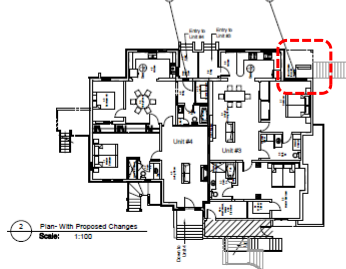
West Elevation



Exterior Alterations | Non-original door replaced with window



1 Plan-As Is
Scale: 1:100



2 Plan-With Proposed Changes
Scale: 1:100

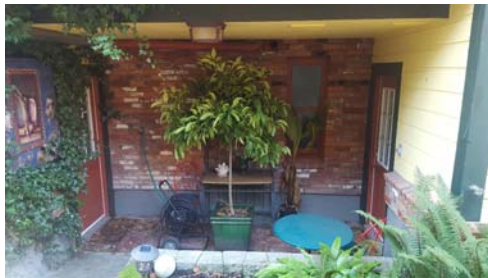
Lower Floor



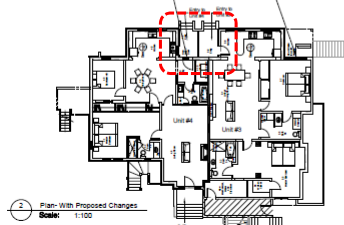
3 East Elevation-As Is
Scale: 1:100



Exterior Alterations | Non-original window replaced with door

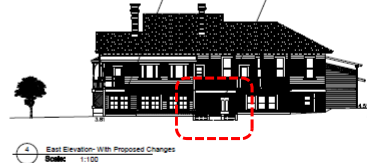


East Elevation-As is
Scale: 1:100



Plan-With Proposed Changes
Scale: 1:100

Lower Floor

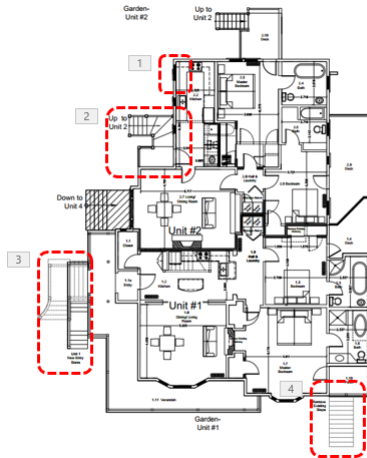


East Elevation-With Proposed Changes
Scale: 1:100

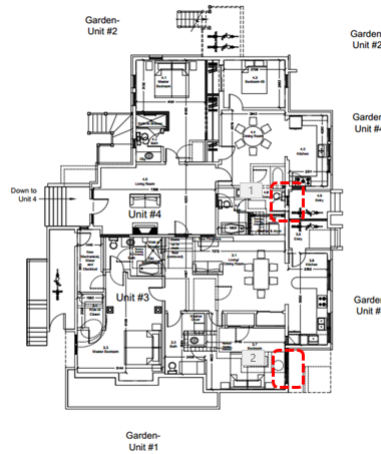
East Elevation



Exterior alterations considered minor



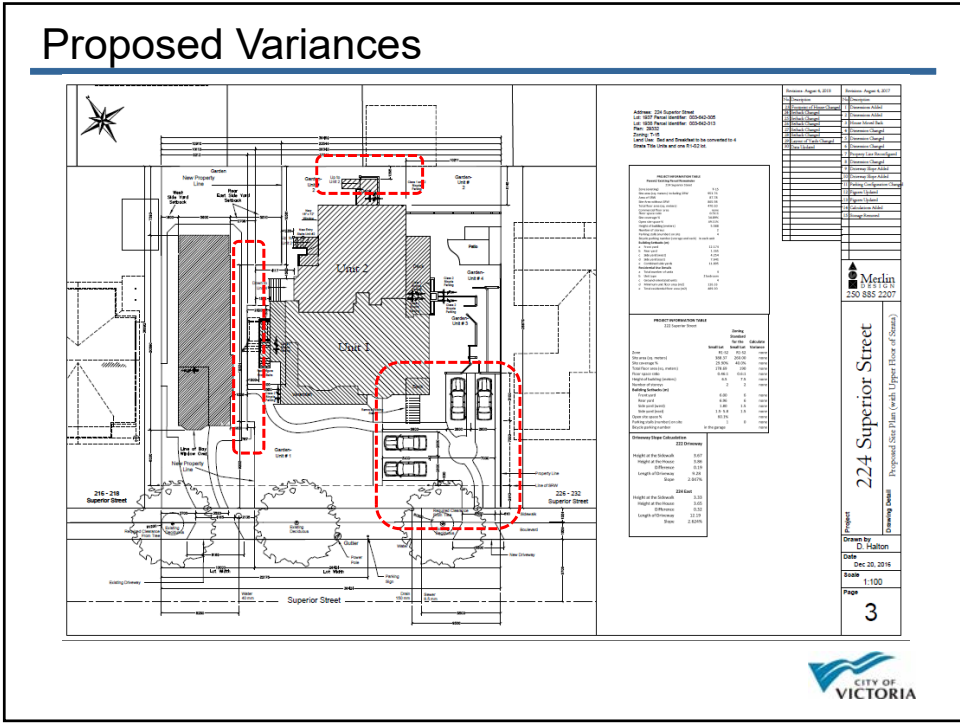
Main Floor Plan



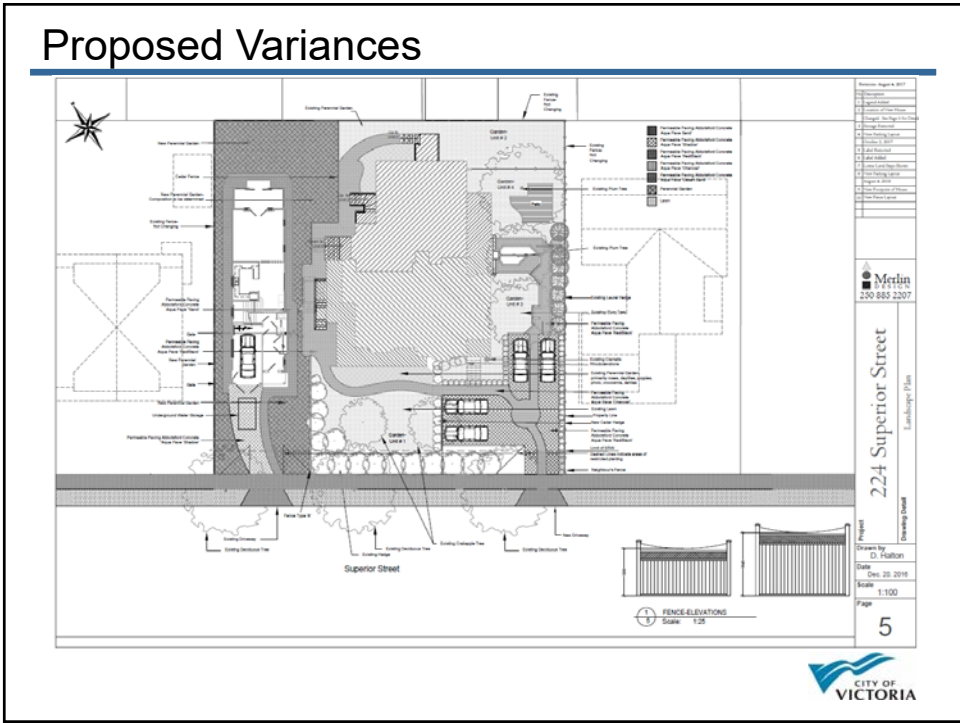
Lower Floor Plan



Proposed Variances



Proposed Variances



Recommendation

