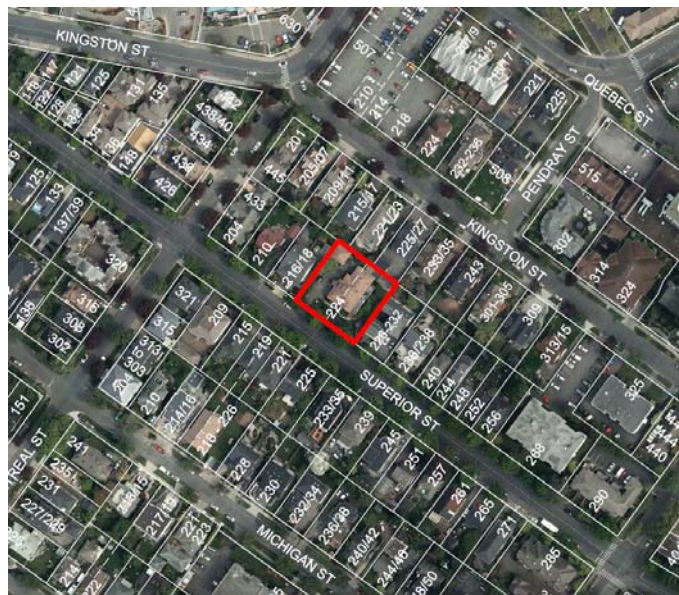

Rezoning and Development Permit Application Update for 224 Superior Street



Subject Property: 224 Superior Street



221, 219 and 215 Superior Street (SW)



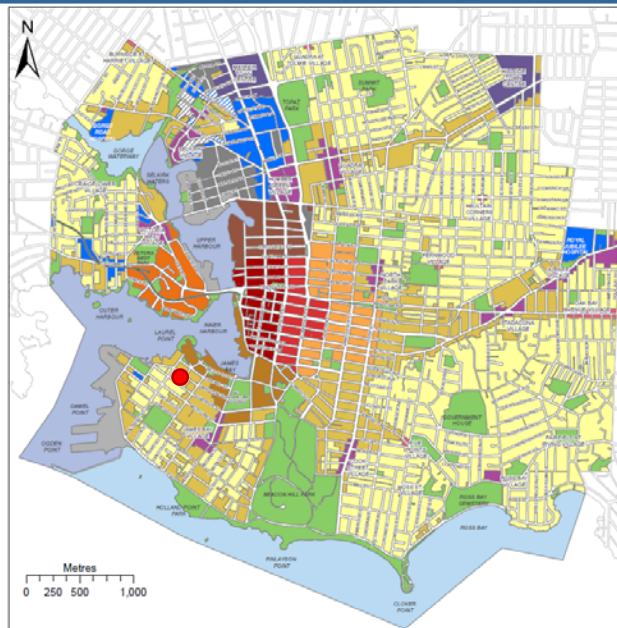
225 Superior Street (SW)



221/223 Superior Street (West)



226-232 Superior Street (East)

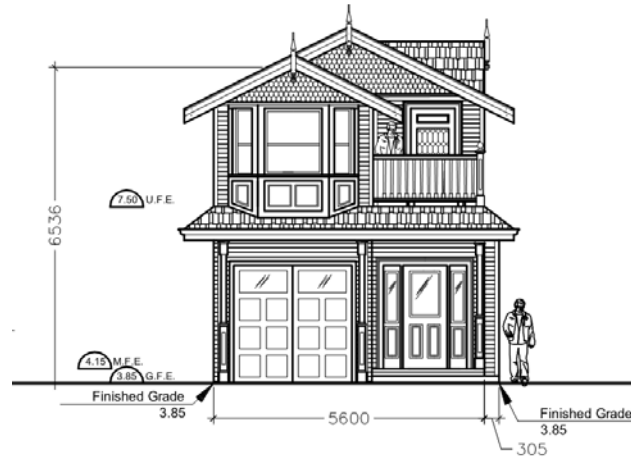


MAP 2
Urban Place
Designations

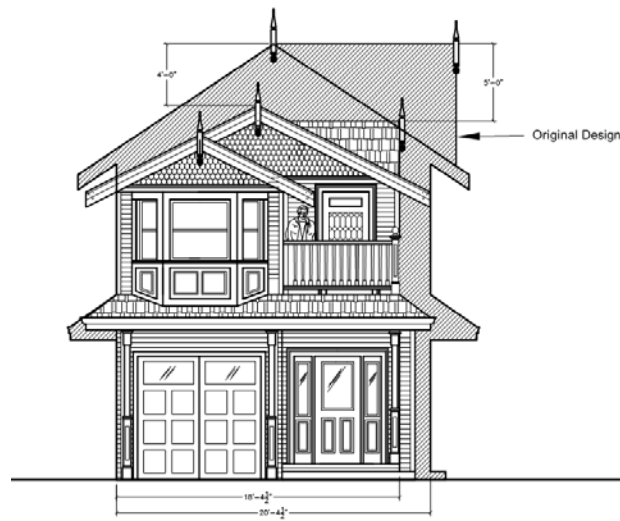
- Core Historic
- Core Business
- Core Employment
- Core Inner Harbour/Legislative
- Core Songhees
- Core Residential
- General Employment
- Employment-Residential
- Industrial Employment
- Industrial Employment-Residential
- Marine Industrial
- Town Centre
- Large Urban Village
- Small Urban Village
- Urban Residential
- Traditional Residential
- Public Facilities, Institutions, Parks and Open Space
- Rail Corridor
- Working Harbour
- Marine

Urban Place Designations extend to the centerlines of adjacent streets.

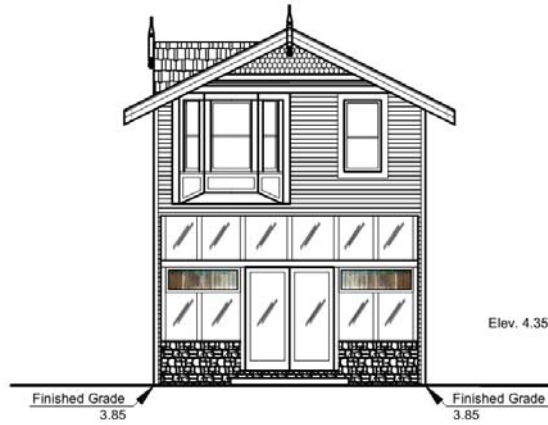
Front Elevation (South)



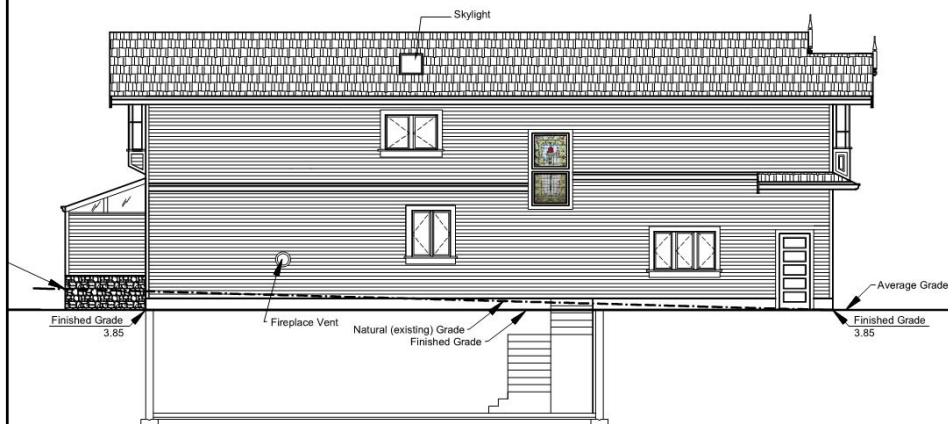
Proposed Changes

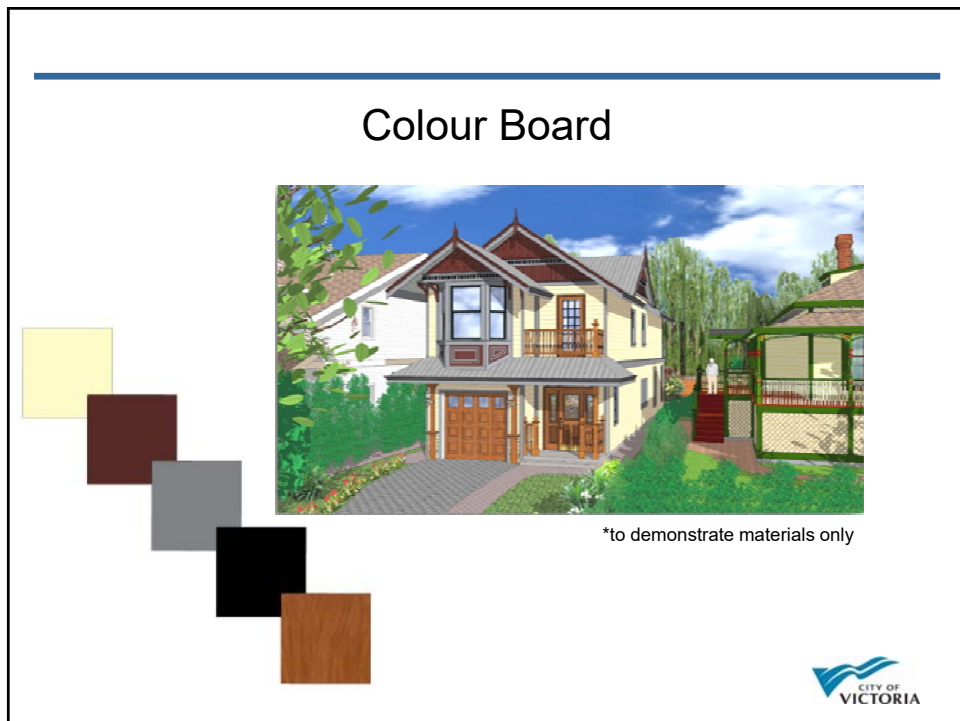
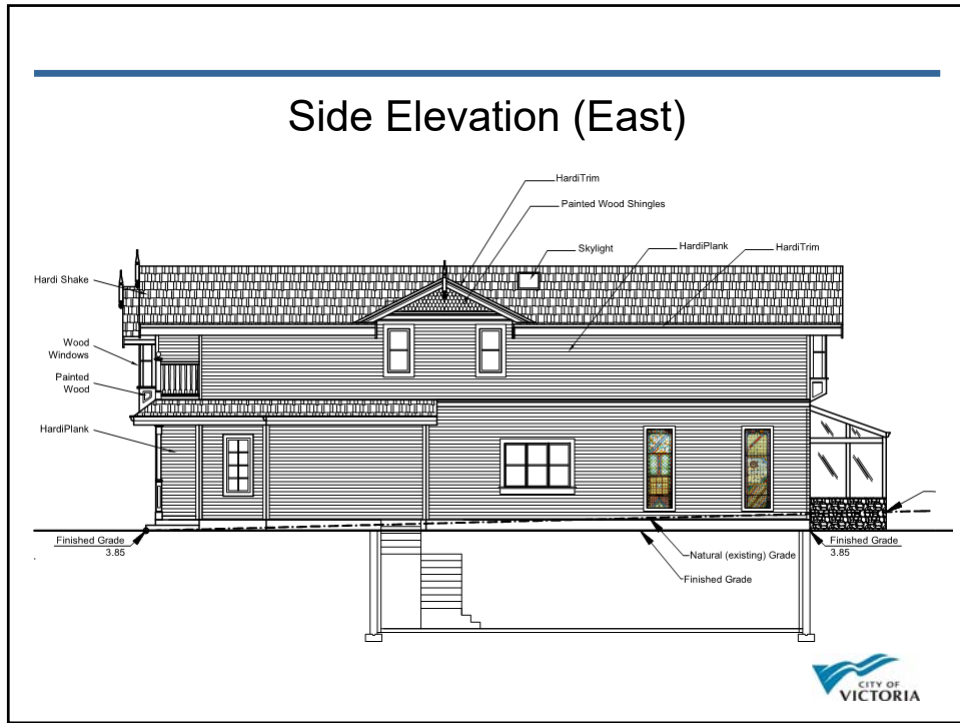


Rear Elevation (North)



Side Elevation (West)





Slide 17

CM [2]3 Chelsea Medd, 2018-12-06

Streetscape Rendering



South Elevation- Streetscape
Scale: 1:100

