

Respectfully submitted for your consideration:

1. Materials to re-introduce and describe the vision of the Oaklands Rise Woonerf group as we build upon Council's twice approved moratorium on sidewalks on the set of contiguous streets that comprise the locally termed Oaklands Rise and the designated people-priority greenway along Kings Road
2. Summary Brochure (developed for August 12 street event and public consultation survey launch)
3. Illustrated description of the concept (drawing together detail for presentation to staff October 9, 2018 to open minds and eyes to the possibilities of a promenade in the heart of a densifying Victoria).
 1. Inclusion of placemaking models confirms that we see this concept as a community wellness and security initiative with transportation components: it is not a transportation initiative.
4. Guiding Principles (first presented to Council, February 8, 2018)
5. Requests for action by Council:
 1. Reaffirm Council approval of approvals granted in 2017 and 2018 for a moratorium on sidewalk installations in the topic area of sidewalk-free streets toward establishment of an alternative model to create a people-first wide-surface walkway / promenade
 2. Designate the Oaklands Rise Woonerf initiative as a pilot of a citizen led, collaborative initiative for the City
 3. Recognise the Oaklands Rise Woonerf as a community building initiative incorporating certain transportation considerations: it is not a transportation project with some public input
 4. Direct necessary revisions to the Subdivision and Development Servicing Bylaws, Schedule B and the Pedestrian Master Plan and Greenway Plan as such policies as may be needed to enable staff to collaborate toward achieving the Oaklands Rise Woonerf initiative.
 5. Give ongoing necessary attention to the development and progress of this project for its potential as a legacy for Victoria in the decades to come.
 6. Direct Administration to report publicly on the quality and effectiveness of public engagement and collaboration with the Oaklands Rise Woonerf Planning Group.
6. Direct staff to implement a procedural de-coupling this matter from the precipitating event, i.e. the single lot rezoning application for 2695 Capital Heights, and safeguard funds held in lieu of a sidewalk for application to the implementation of the Oaklands Rise Woonerf.

2. Brochure

- The 3-fold pamphlet is embedded for easy reference.

- Front

On this page

- Interior including map

On following page

- Back

On following page

Safe, Accessible, Walkable Help us keep it that way!



Can a street be a people place?

Of course! Join us via oaklandsrise@gmail.com

Shared space, home zone, living streets, woonerf

Traffic engineer Hans Monderman championed the people-first, community building approach called the *woonerf* (pr: von-nerf) spreading worldwide.

Over 2 million people in the Netherlands thrive in these “living yards” where people come first and the road is shared with bikes and vehicles as needed.

Details vary internationally, but the take-away is the same: a successful woonerf suits its place.

- ✓ Shared space: it's placemaking for community
- ✓ Way-finding for walkable streetscapes
- ✓ Seniors, children, dog-walkers and more
- ✓ Resident and service vehicles moving at the pace of people
- ✓ Planted boulevards to frame the promenade

Oaklands Rise Woonerf

Oaklands Rise Woonerf (VOAN-ehrf)

A shared space for community in Victoria, B.C.

Oaklands greenway promenade

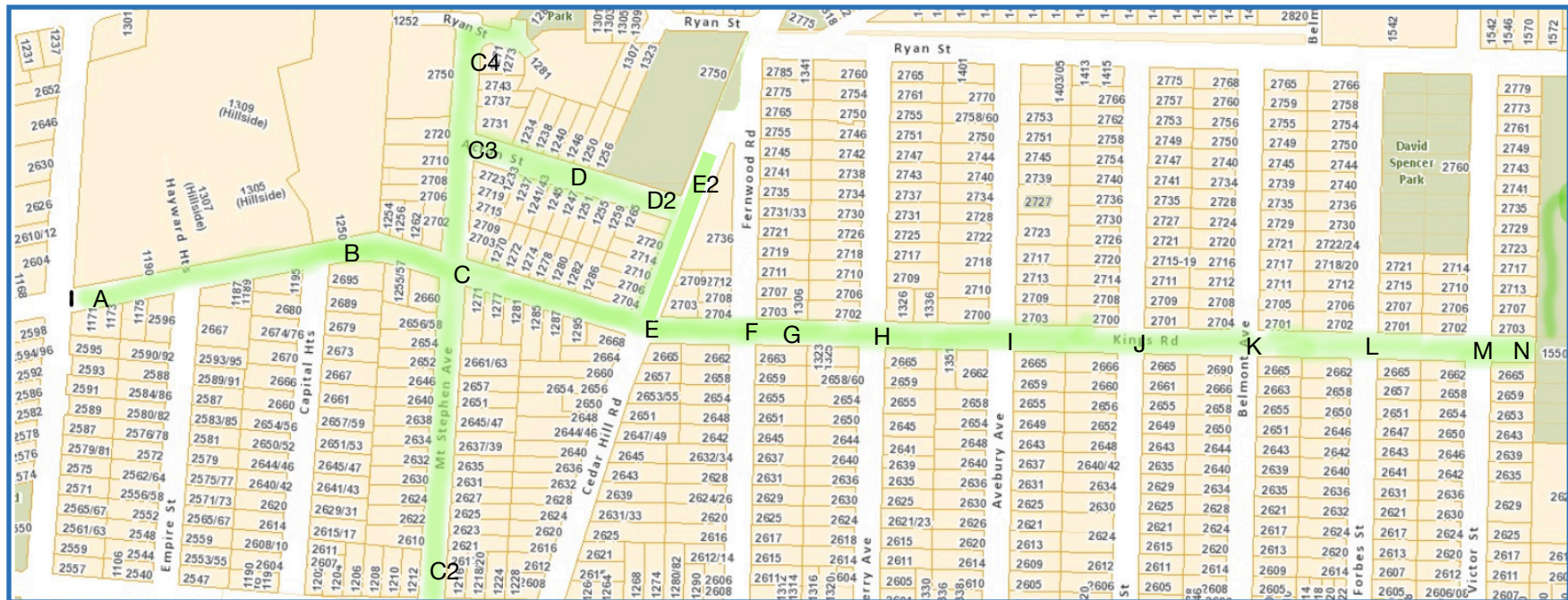
Imagine a time when birdsong, buzzing pollinators and friendly passersby invite a break from the hustle and bustle of City life. That time is now.

Combining the Kings Road Greenway and the Oaklands Rise Living Streets Woonerf is simply a gift for tomorrow.

Specific treatments of areas identified on the map are yet to be determined.

Be a part of the process!

- A Two-block current gap in the Kings Road Greenway
- B West entrance to the living streets woonerf
- C Street art
- C2 South entrance to the living streets woonerf
- C3 Street Art
- C4 Northwest entrance (from Mt. Stephen Park)
- D Street Art - chicanes?
- D2 El-Emanuel Cemetery, Oaklands Chapel needs
- E Traffic calming woonerf crossing at Cedar Hill Rd.
- E2 Northeast entrance to the living streets woonerf
- F Traffic calming woonerf crossing at Fernwood Rd.
- G Parklette & way-finding focal point
- H Street Art
- I Street Art
- J Street Art
- K Street Art augmenting Belmont Ave. roundabout
- L Street Art
- M Street Art
- N East entrance to the Kings Greenway Promenade and Oaklands Rise Living Streets Woonerf



Street art may take the form of surface treatments or vertical elements designed to guide the psychology of drivers and others toward safer speeds and practices.

Way-finding elements may invite exploration of historical and geographical landmarks as well as identification of plantings used to create the zone.

This volunteer, community driven pilot draws upon a concept proven overseas and increasingly adopted for specific, site-suitable locations in North America.

Back of brochure

What's the plan?

- 1) Gateways: you'll know you are "in the home zone"
- 2) Shared spaces: people, bikes, pets, cars
- 3) Surface treatments: design, function, beauty
- 4) Landscaping & furnishings: art, plants, sculptures
- 5) Vertical elements mean drivers must be attentive
- 6) Local context ensures neighbourhood fit
- 7) Human scale welcomes all ages & abilities with attention to way-finding, placemaking & belonging



Neighbourhood or road race?

Density: how cities cope with growth.

It seems *inevitable* that neighbourhoods be turned into transportation corridors to get people out of the way so cars can get somewhere else—but it is not!

An alternative to speed bumps, cement, sign forests and flashing lights is to celebrate *living* in shared spaces for people in low-traffic neighbourhoods.



The international sign for a woonerf alerts everyone to the multiple uses of the designated home zone.

You are invited!

The Kings Road Greenway and sidewalk-free streets of Oaklands Rise are enjoyed by walkers of all ages.

Victorians from neighbouring areas stress the value of tranquil "less urban" space in the heart of the city.

Help us preserve this unique area for the future!

Oaklands Rise can be found on Pinterest, Twitter, Facebook and other websites.

Contact us at oaklandsrise@gmail.com

3. Illustrated description of the concept



View up Mt. Stephen Avenue toward Ryan Street near the intersection of Acton Street.

The vertical elements illustrate features under consideration in line with the principles of the woonerf (VON-ehrf).

At right, neighbours Madeline and Rob stand beside an easily achievable alternative.

This brief package of visuals illustrates the approach Oaklands Rise is taking in defining our adaptation of the woonerf (von-ehrf) concept.

We hope it is a useful reference as design concepts are explored with City of Victoria staff.

Oaklands Rise Planning Group
oaklandsrise@gmail.com



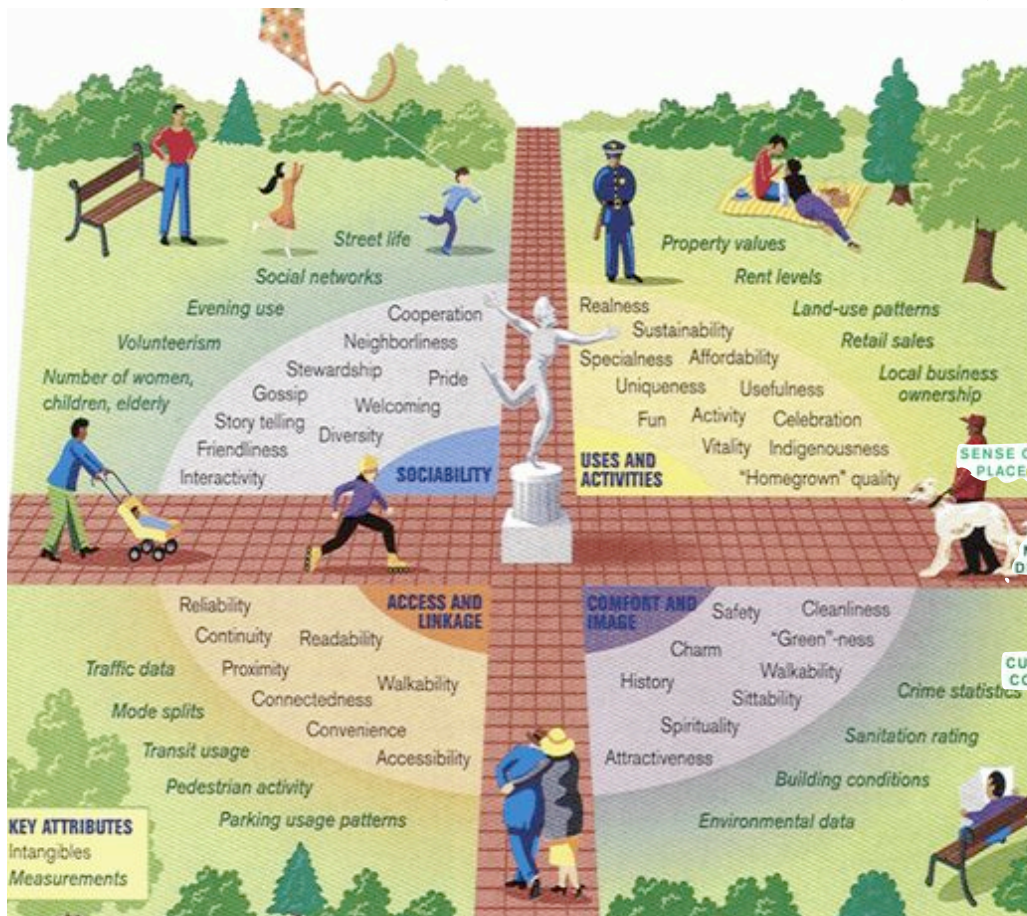
Oaklands Rise Woonerf (VOAN-ehrf)

The Woonerf is a placemaking model that accommodates local vehicles as “guests” in a people-oriented, shared space.

Design incorporates the need for service and emergency vehicle access while incorporating elements that make the area less attractive to cut-through drivers. In this way, attractiveness as a destination of choice for surrounding areas is maintained while traffic volume and speed—and risk of harm—is reduced.

The Oaklands Rise concept is illustrated in the following images.

A shared space for community in Victoria, B.C.



From an interview about Seattle's "Squire Park: Reclaiming the Streets for the People Project"

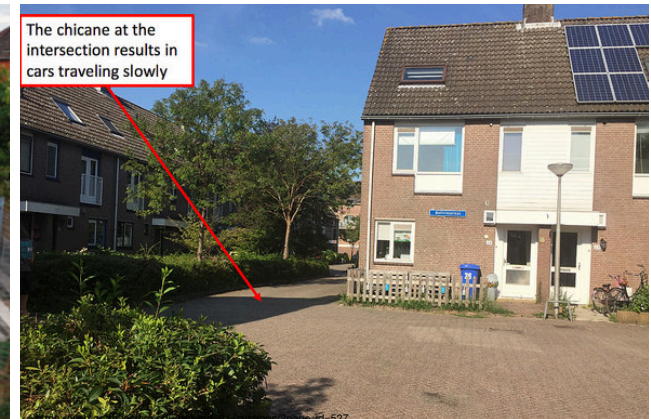
Question: "What makes this project a woonerf?"

Answer: "It is really about transforming the street into a social gathering place rather than a through way for travel. Cars can still snake through the street and even park on the street..."

Illustrations below depict sidewalk-free models in three locations in the Netherlands and Germany. The 2 million Dutch living in woonerven have inspired a global movement. Adaptations are context specific within overriding principles.



PRINCIPLES GROUND IMPLEMENTATIONS THAT SUIT THEIR UNIQUE CONTEXT





Signage for the Woonerf, Home Zone, Spielstrasse, Zhilaya Zona, Living Street, Zone de Rencontre: internationally

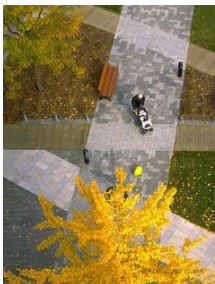


Surface treatments can include placemaking activities, way-finding elements and the expansion of visual identity for the area.

A variety of options exist for designating the woonerf area and permeable step-off zones in both infrastructure heavy and light configurations.

It is not if, but *how*.

Building community input into concept design and implementation is key.



Surface treatments can include projections of light and colour: non-permanent and effective.

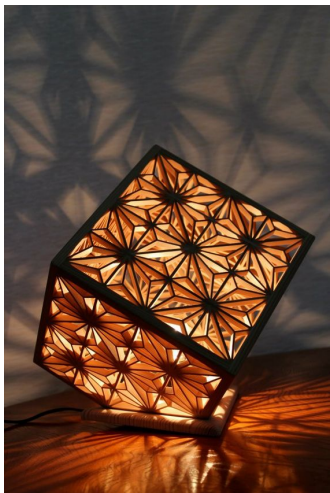


Vertical elements can “paint” with light for safety and effect.



Street furnishings are an important aspect of a visual identity

The guiding principles established by the community vision and provided to Council in 2017 is fundamental. Street furnishings need not be utilitarian. They can inspire connection and wellness.



Vertical elements and street furnishings invite placemaking.

Placed in intersections and (visually indicated or constructed) chicanes, they require cyclists, drivers and pedestrians to navigate the shared space using slow speeds to achieve the dramatic decrease in risk of harm associated with the Woonerf (VON-ehrf) model.



Vertical elements can take many forms. Solar powered lighting & reflective paint enhances atmosphere and safety.

Photoluminescent technologies have emerged as viable alternatives to powered installations.

The photograph shown at right illustrates one of a range of innovative approaches and materials available from Coreglow of Courtenay, B.C.



Oaklands Rise Woonerf (VOAN-ehrf)



Innovation in functional elements creates engagement.



A shared space for community in Victoria, B.C.

intelli**streets**™

The wireless digital infrastructure that controls energy management, security, and outdoor media



Oaklands Rise Woonerf (VOAN-ehrf)



The concept has been adapted to much more complex environments than the streets identified for the Oaklands Rise Woonerf.

The area is ideal to pilot with an “infrastructure light” approach and incorporates additional “infrastructure heavy” elements as familiarity with the concept evolves and need may be identified.

We see no need to start with an “infrastructure heavy” approach.



A shared space for community in Victoria, B.C.



PERSPECTIVES ON INFRASTRUCTURE: FOR DISCUSSION I-LIGHT NOW, I-HEAVY OVER DECADES

INFRASTRUCTURE LIGHT	INFRASTRUCTURE HEAVY
<p>"I-Light" approaches draw upon a community developed vision to designate a pilot before committing resources required for a more infrastructure heavy model. This approach is supported by volunteer engagement and implementation where feasible to reduce costs while building community. It directly reflects the vision of a shared space in which vehicles are guests.</p>	<p>"I-Heavy" approaches typically involve City driven projects including roadbed preparation; footings; expansion of existing drainage systems and introduction of variables in surface treatments to identify the woonerf zone. Signage within the zone is limited to avoid any sense of transportation primacy. Consistent with the concept, vehicles are guests in a shared space. Speed tables at entrances.</p>
Innovative surface treatments include painted art, pattern projection through light; rolled curbs where needed for water / flow control; tactile buttons; etc.	Varied permeable paving, tactile paving, curbs requiring footings, extension of drain system, etc.
Boulevard plantings through donations / neighbourhood propagation, maintained by volunteers, etc.	Cement planting beds; rain catchment beds, etc.
Localised street art elements	Civic program street art to augment community selections
Street furnishings: benches; little libraries, plant pots, game boards, etc.	Street furnishings: exercise / play equipment for seniors / kids; placemaking, way-finding hardscape; elements of larger scale / scope, etc.
Lighting: Solar lamps as part of street art, seating, etc. to augment existing lighting; integration with placemaking as feasible.	Lighting: Designed per the woonerf visual identity plan; scaled to strengthen the central promenade concept
Traffic calming achieved through woonerf (VON-ehrf) designation and visual identity; use of plantings, surface treatments and art; parking needs of residents and service vehicles can be designed with planted buffers to create, in effect, chicanes for a meandering street as needed.	Expansion of I-light elements with engineered infrastructure: appropriately designed and off-set chicanes; roundabouts and installed verticals including plantings and art; variations in street width; varied permeable angle / front-end parking zones interspersed with defined vegetation buffers.
Progress is organic, in progress now, a multi-year effort as volunteers, resources and community will supports.	Progress is built into long range civic infrastructure planning and implementation, in concert with community efforts.