

Development Permit No. 000525 for 90 Saghalie Road



element
Lifestyle Retirement Inc.

WA
WENSLEY ARCHITECTURE LTD

Committee of the Whole
January 10, 2019



WA
WENSLEY ARCHITECTURE LTD

AQUARA
COMMITTEE OF THE WHOLE

JANUARY 10, 2018
element
Lifestyle Retirement Inc.

View South from Bayview Place



WA

WENSLEY ARCHITECTURE LTD

COMITEE OF THE WHOLE

JANUARY 10, 2018

element

STRATEGIC PLANNING LTD.

View North from corner of Kimta/Tyee towards Bayview One



WA

WENSLEY ARCHITECTURE LTD

COMITEE OF THE WHOLE

JANUARY 10, 2018

element

STRATEGIC PLANNING LTD.

View North from Kimta Road



WA

WENSLEY ARCHITECTURE LTD

COMMITTEE OF THE WHOLE

JANUARY 10, 2018

element

STRATEGIC PLANNING LTD.

View West along Rail Corridor



WA

WENSLEY ARCHITECTURE LTD

COMMITTEE OF THE WHOLE

JANUARY 10, 2018

element

STRATEGIC PLANNING LTD.

View East from Tyee Road



WA

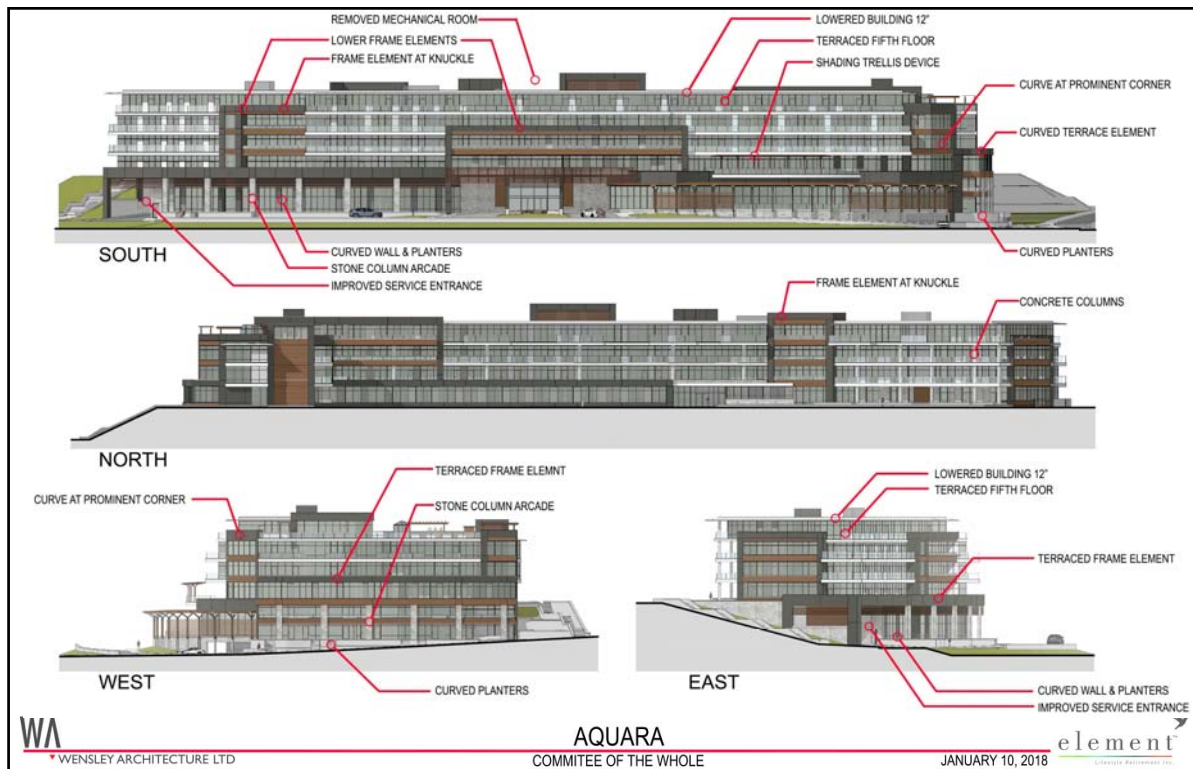
WENSLEY ARCHITECTURE LTD

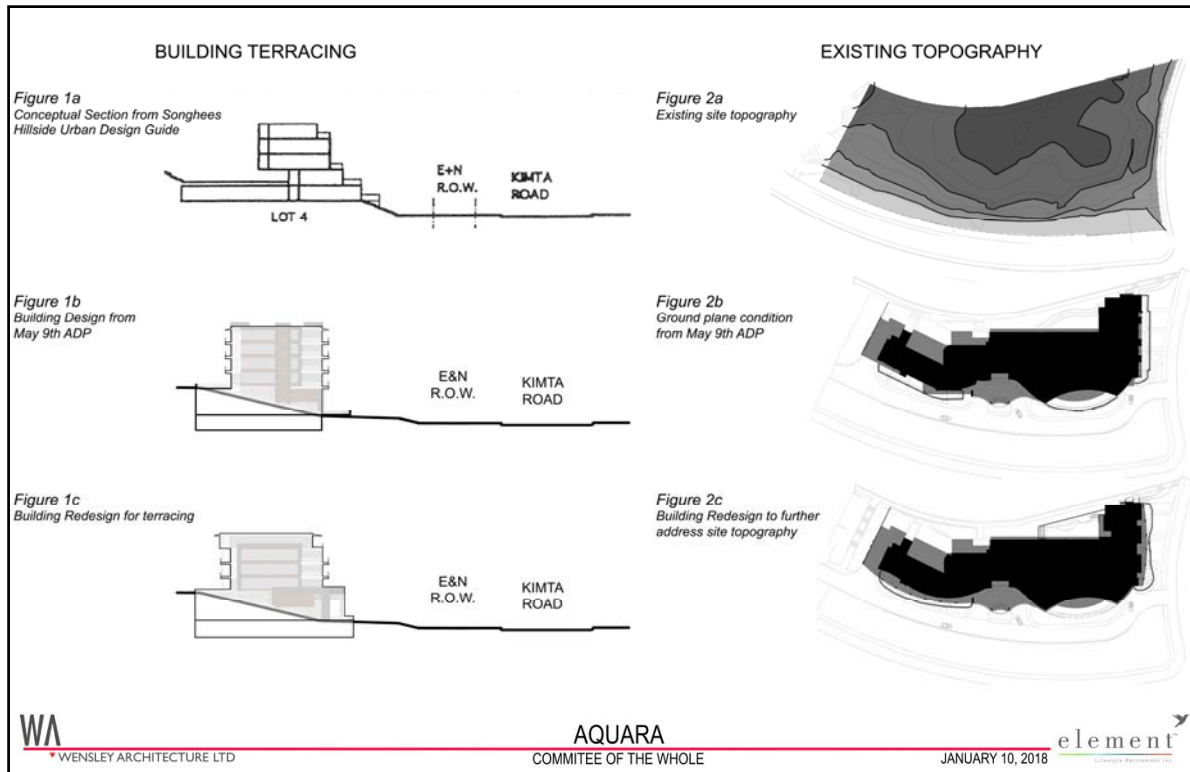
COMMITTEE OF THE WHOLE

JANUARY 10, 2018

element

STRATEGY ARCHITECTURE LTD.









PERSPECTIVE OF MAIN ENTRY

WA

WENSLEY ARCHITECTURE LTD

AQUARA

COMMITTEE OF THE WHOLE

element

JANUARY 10, 2018



PERSPECTIVE OF TYEE STREETSCAPE

WA

WENSLEY ARCHITECTURE LTD

AQUARA

COMMITTEE OF THE WHOLE

element

JANUARY 10, 2018





PERSPECTIVE ALONG NORTH PEDESTRIAN PATHWAY

WA

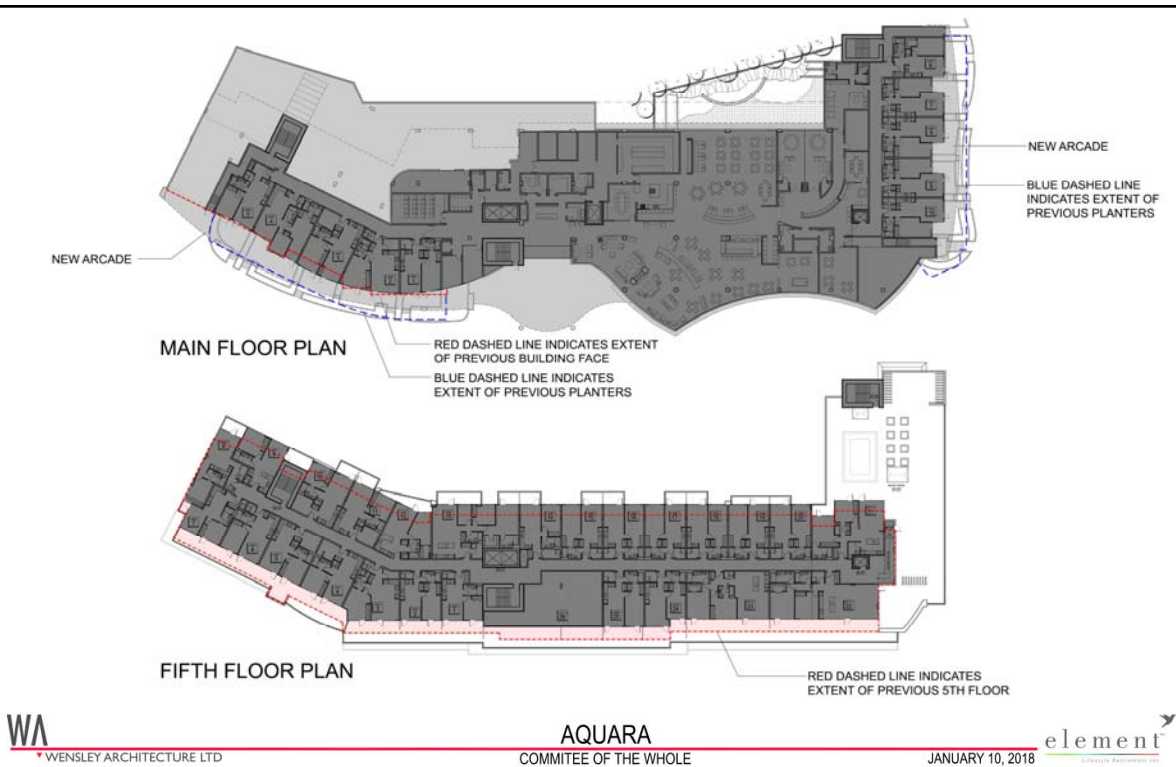
WENSLEY ARCHITECTURE LTD

AQUARA

COMMITTEE OF THE WHOLE

element

JANUARY 10, 2018



WA

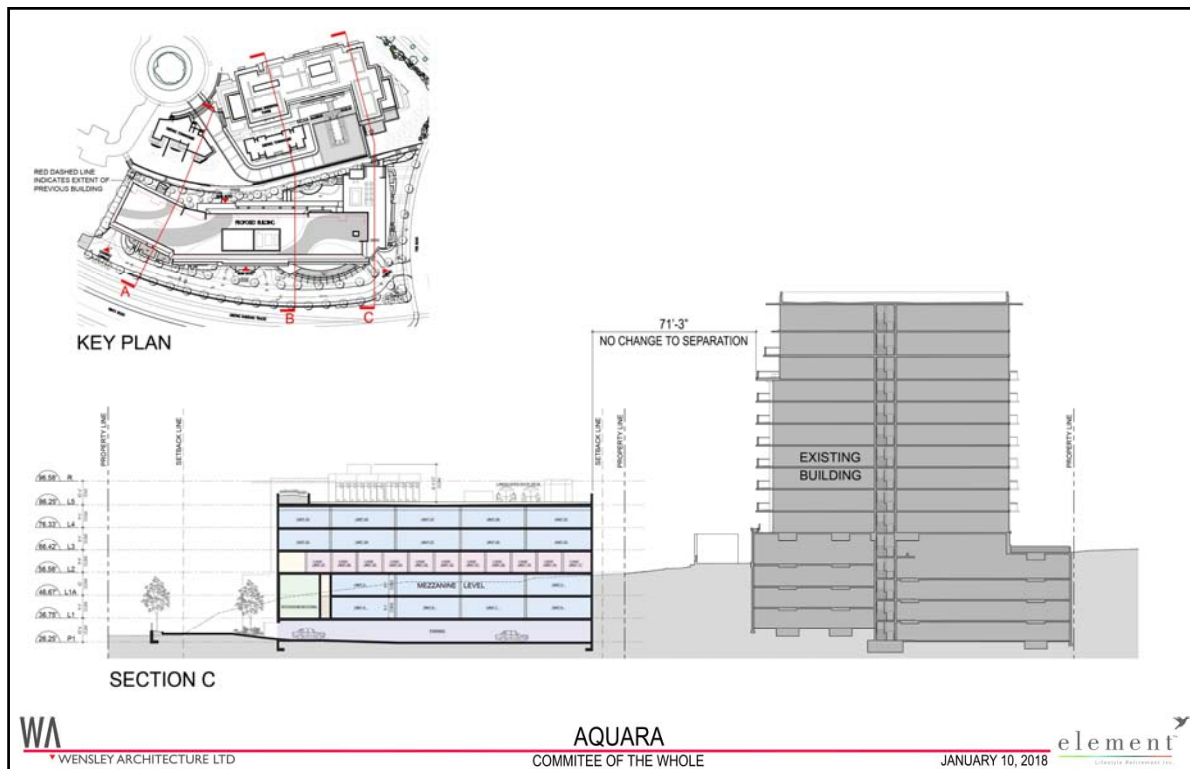
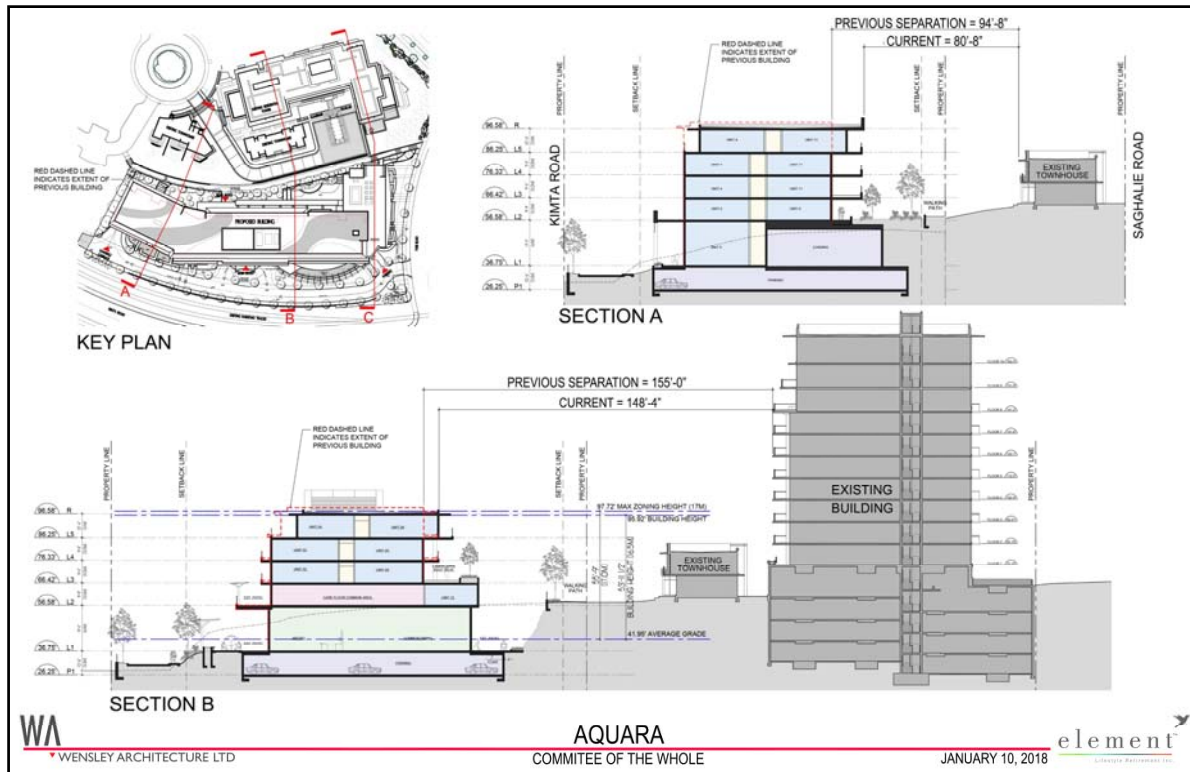
WENSLEY ARCHITECTURE LTD

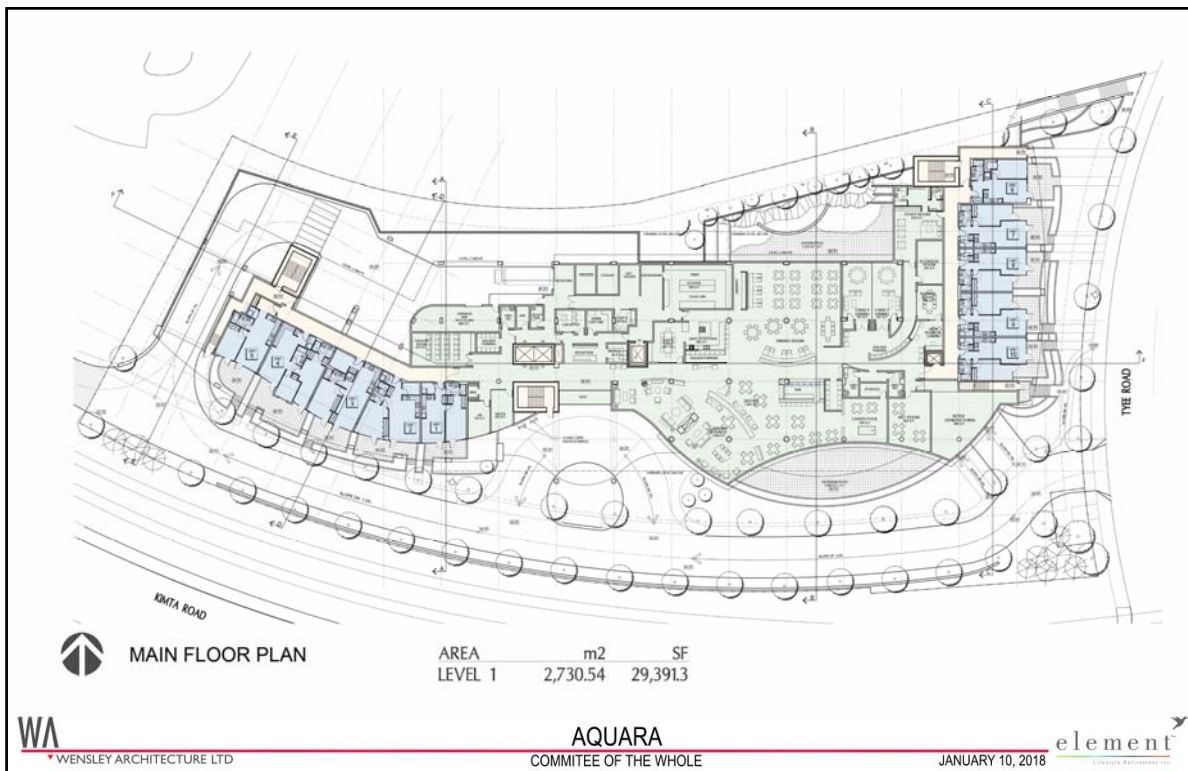
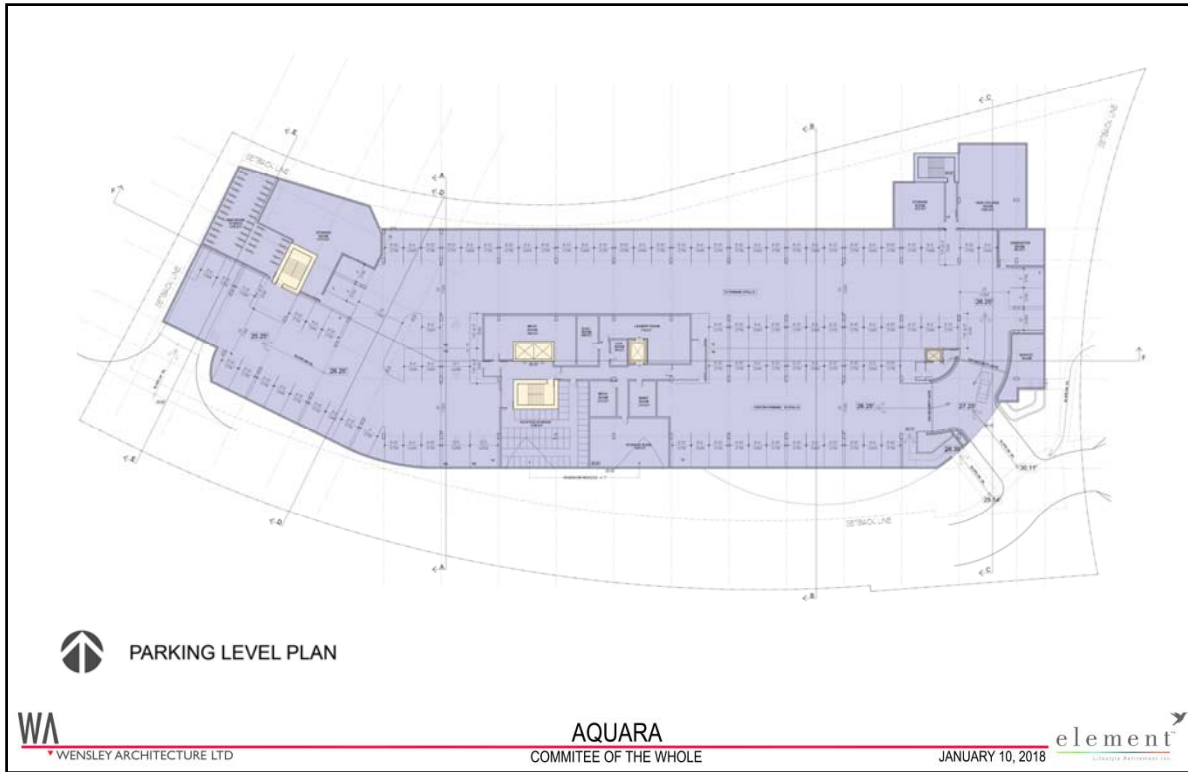
AQUARA

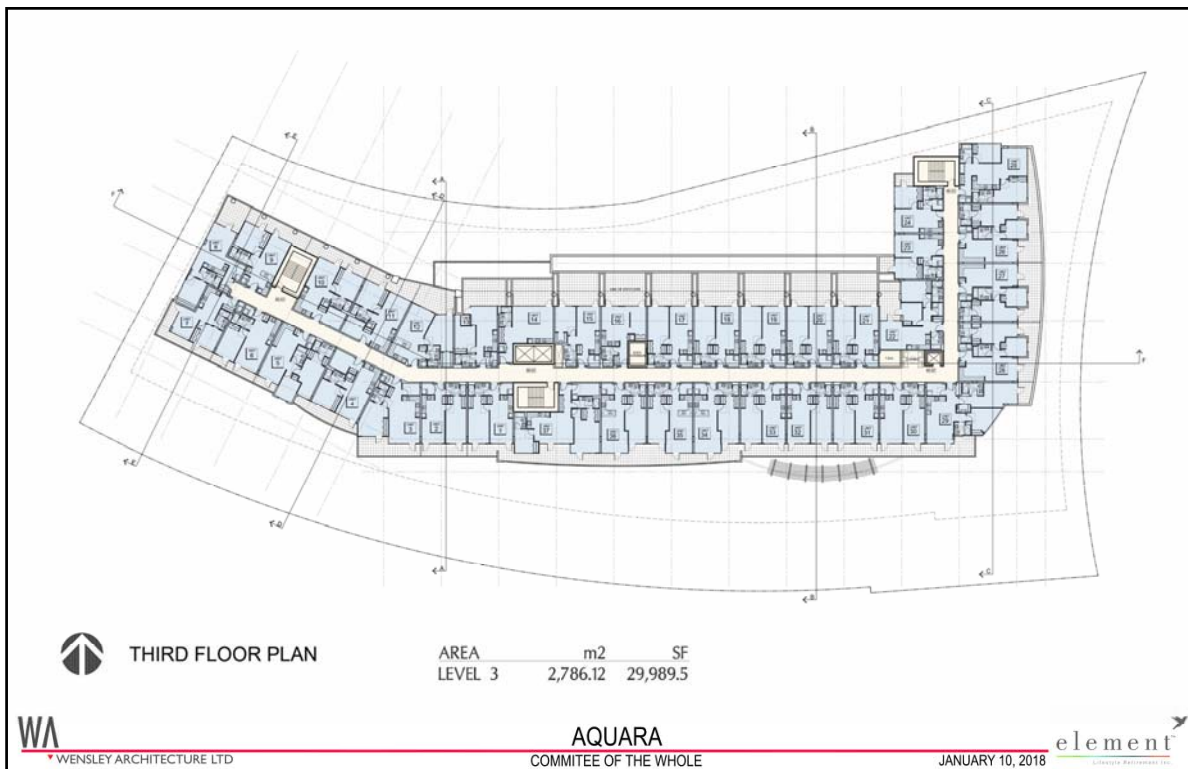
COMMITTEE OF THE WHOLE

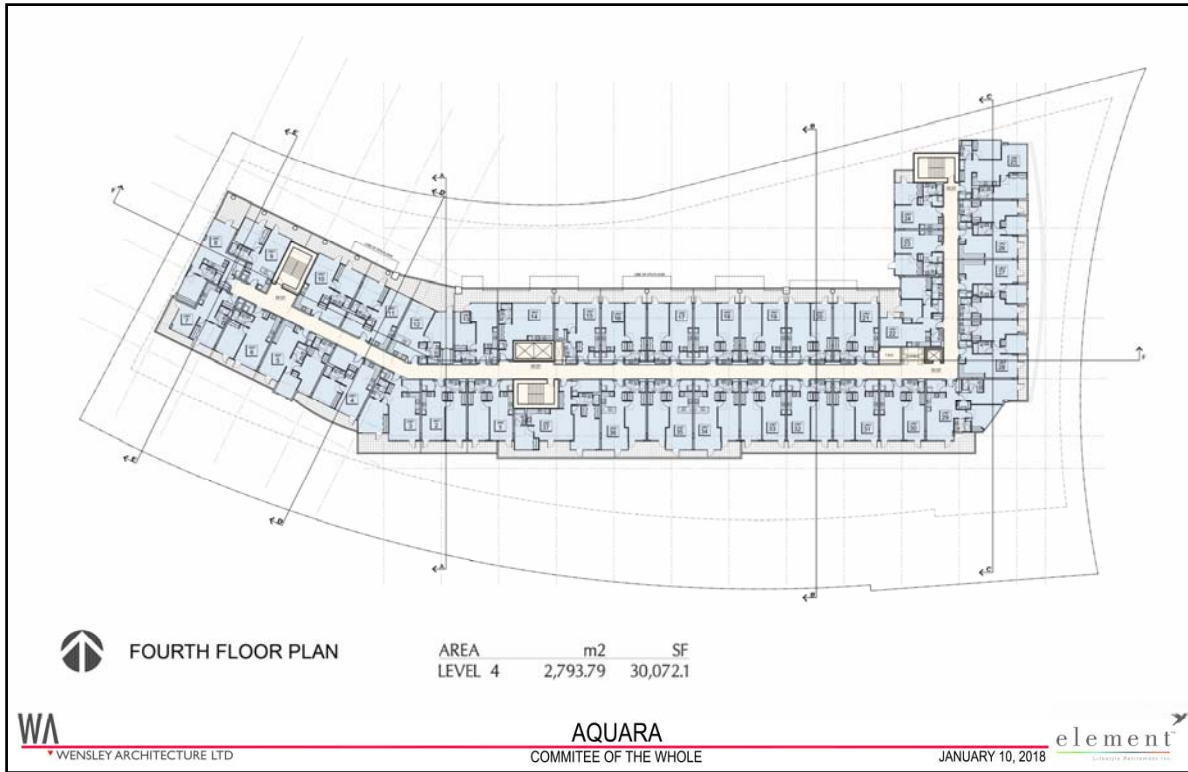
element

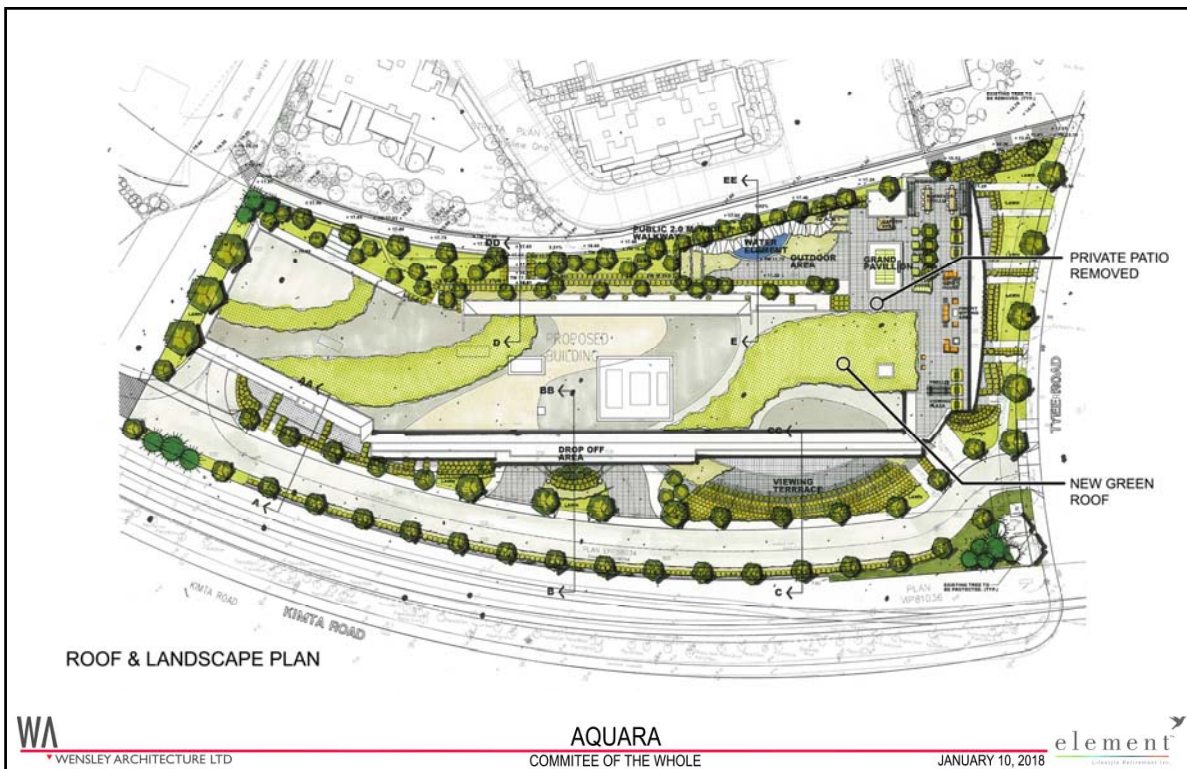
JANUARY 10, 2018











Development Permit No. 000525 for 90 Saghalie Road



element
Lifestyle Retirement Inc.

WA
WENSLEY ARCHITECTURE LTD

Committee of the Whole
January 10, 2019



SCHEMATIC PERSPECTIVE

WA
WENSLEY ARCHITECTURE LTD

AQUARA
COMMITTEE OF THE WHOLE

JANUARY 10, 2018
element
Lifestyle Retirement Inc.



