

GOVICTORIA

Our Mobility Future

Victoria City Council Workshop

January 24, 2019

Today's Agenda



1

Setting the Stage



2

Making
Connections



3

Responding to
Uncertainty



4

Shaping our
Mobility Future



1. Setting the Stage

What is *Go Victoria*?

Go Victoria will set our plans and priorities to invest in the most transformative ways to move people, goods, and services in, out, and around the City of Victoria, for generations to come.

This playbook will identify a higher standard of mobility, defined by safer, integrated, clean, seamless, and attractive transportation networks.



What is the process?



Who is doing this work?

N NELSON
NYGAARD

AP ACCESS PLANNING
Strategies for Great Cities





2. Making Connections

Why is this needed?



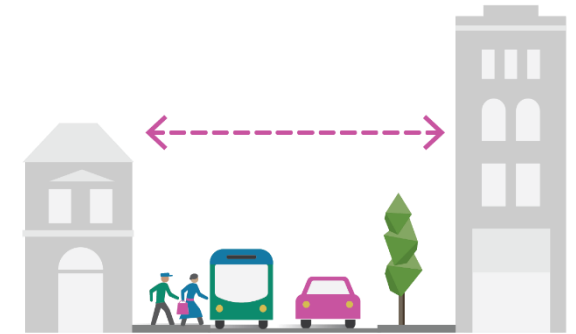
HEALTH AND WELLBEING



AFFORDABILITY



POPULATION GROWTH



LIMITED SPACE



CLIMATE ACTION AND RESILIENCY



ECONOMIC OPPORTUNITY



SAFETY



FISCAL RESPONSIBILITY

Climate Action & Resiliency

On-road transportation accounts for 40% of GHG emissions—the second highest share of any sector.

2017 TRANSPORTATION MODE SPLIT

All trips
within Victoria

- 34% SINGLE OCCUPANT
- 8% PASSENGERS IN VEHICLES
- 7% TRANSIT RIDERS
- 9% CYCLISTS
- 41% PEDESTRIANS
- 1% OTHER USERS



All trips, to, from and
within Victoria

- 50% SINGLE OCCUPANT
- 11% PASSENGERS IN VEHICLES
- 12% TRANSIT RIDERS
- 7% CYCLISTS
- 19% PEDESTRIANS
- 1% OTHER USERS



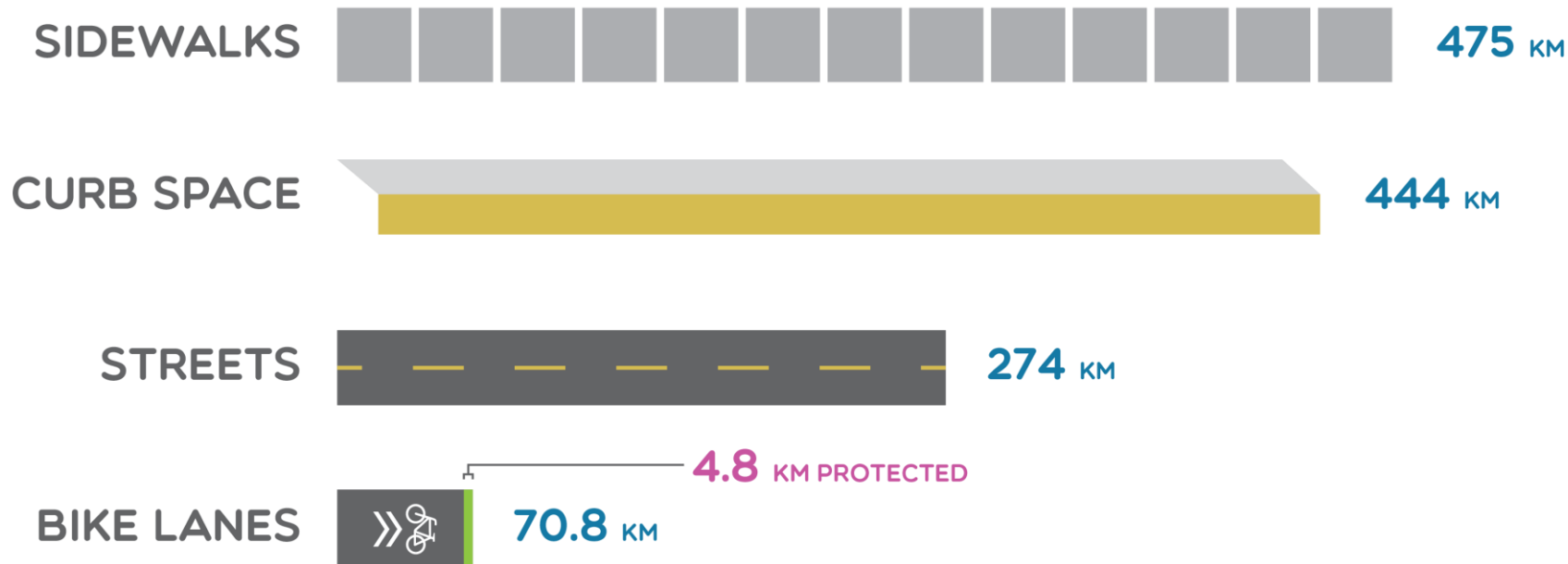
Goal:

All Victorians have access to low carbon, high-performance and affordable multi-modal transportation.

-Climate Leadership Plan

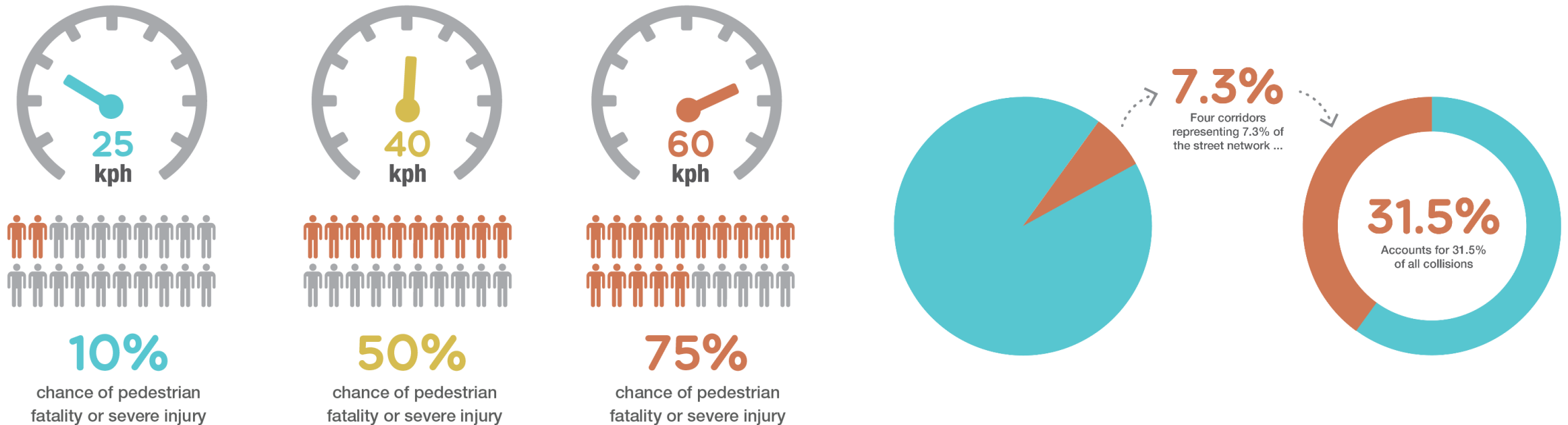
Fiscal Responsibility

Victoria manages hundreds of kilometres of roadway, sidewalks, curb space, and bike lanes. Maintaining a state of good repair helps to stretch limited resources.



Safety

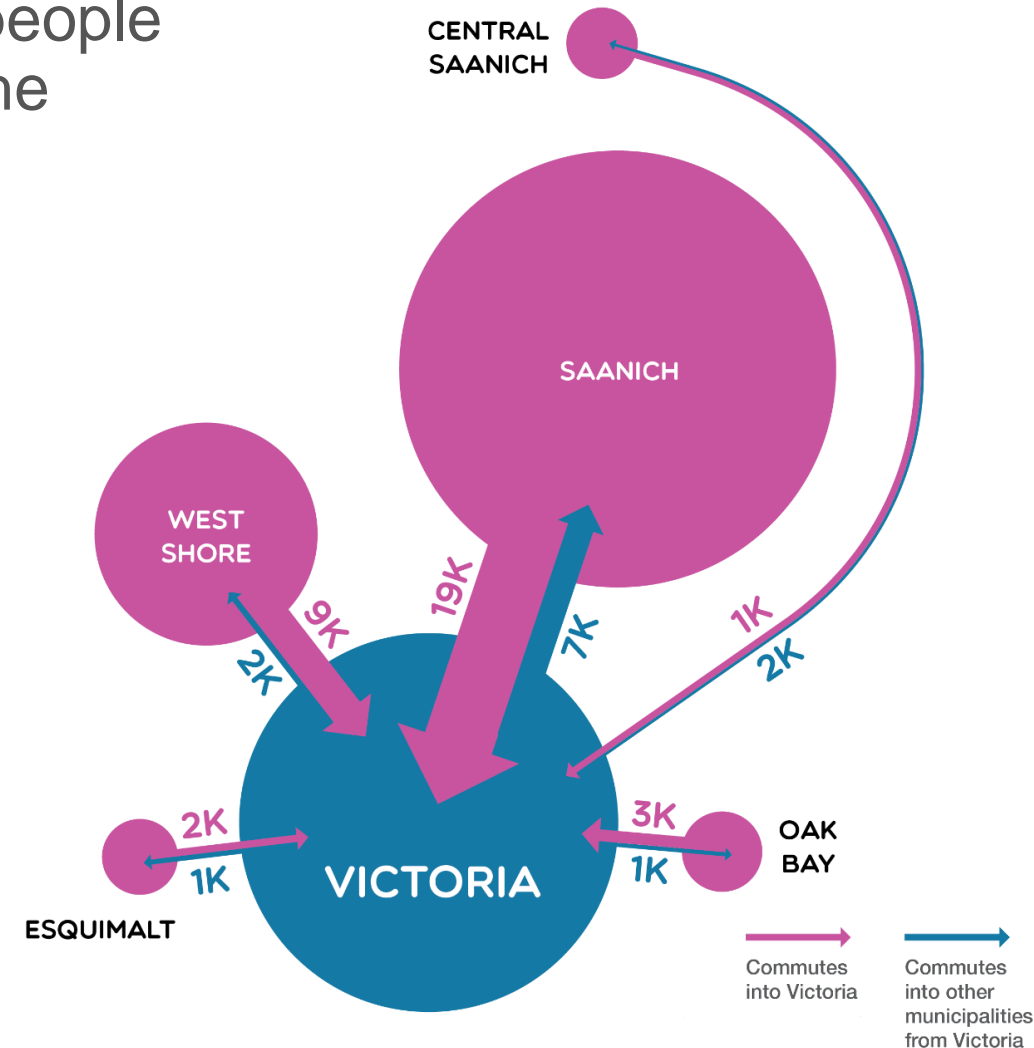
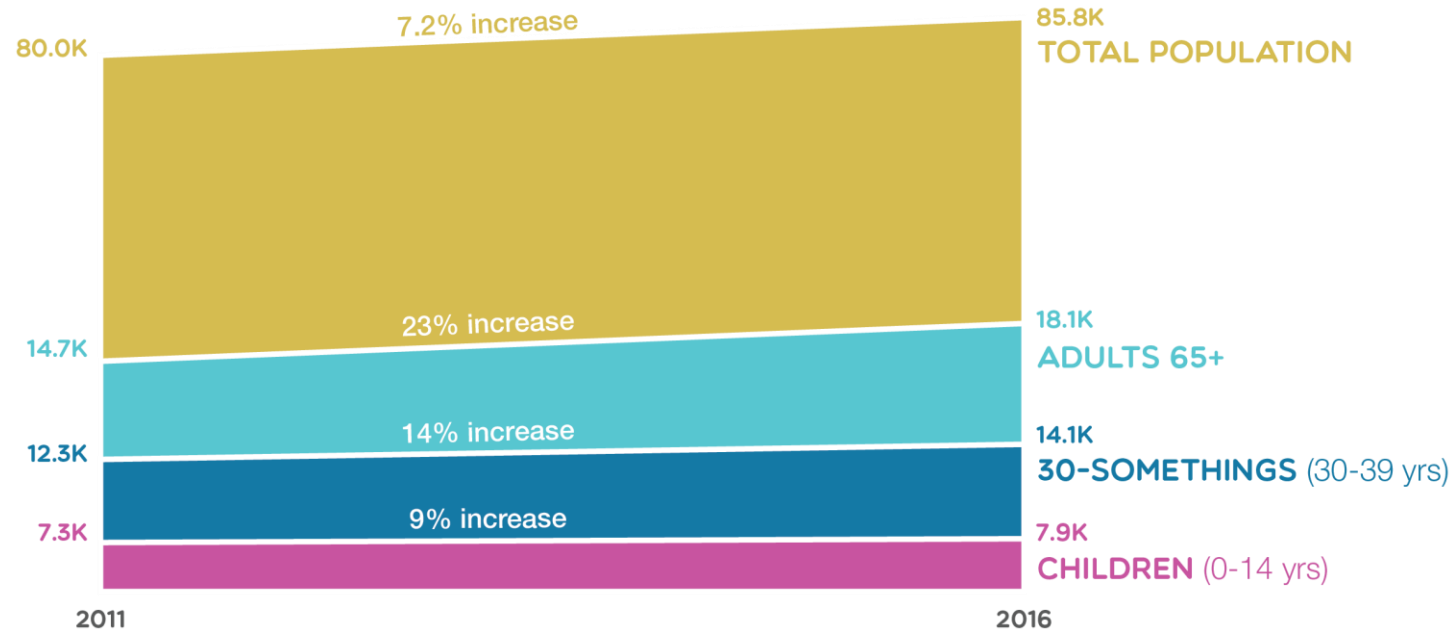
Making our streets safer—and eliminating fatalities and serious injuries—is our responsibility. We must move Victoria toward Vision Zero.



Source: Tefft, Brian, 'Impact speed and a pedestrian's risk of severe injury or death' (AAA Foundation for Traffic Safety, 2011)

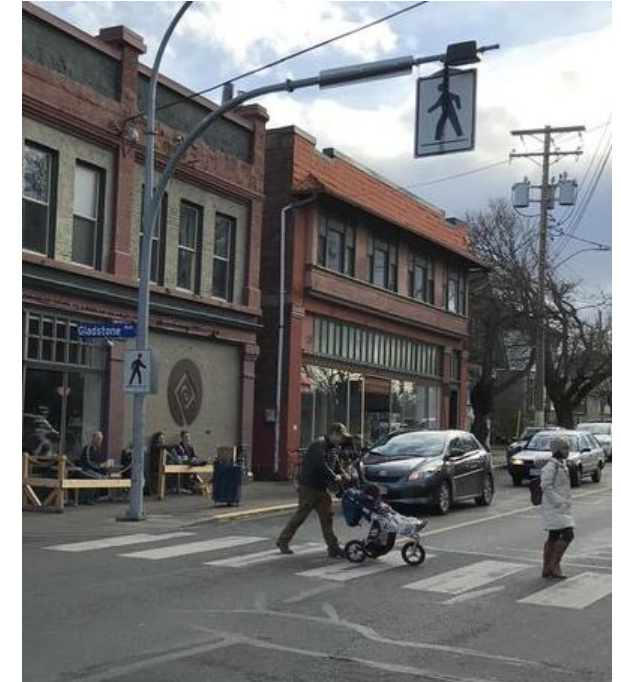
Affordability, Growth, & Economic Opportunity

Victoria is the heart of a growing region—more people puts pressure on our mobility networks and on the region's affordability.



Health & Wellbeing

Our bodies require 10,000 steps a day. Making active transportation part of everyday life keeps people of all ages and abilities healthy and productive.

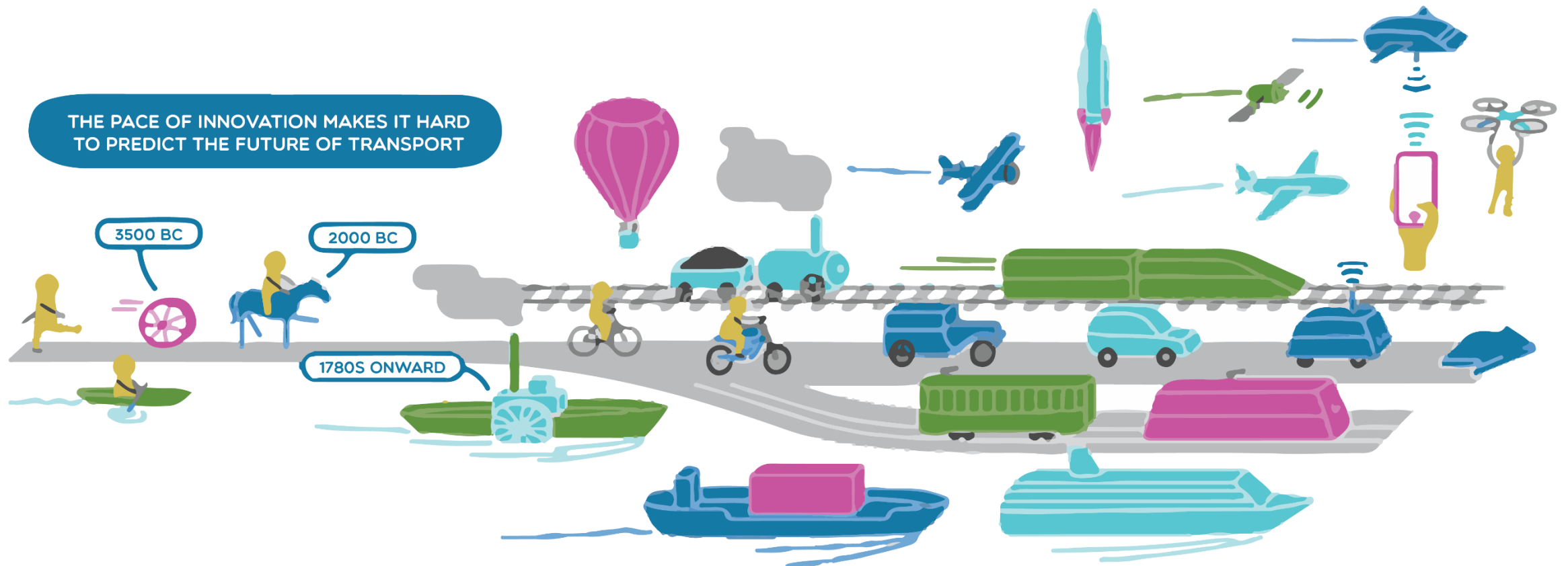




3. Responding to Change

Unprecedented Pace

The next change is on the horizon ... but what is it?



Disruptors and Instigators

Evolving mobility services and vehicles



Disruptors and Instigators

Evolving mobility services and vehicles

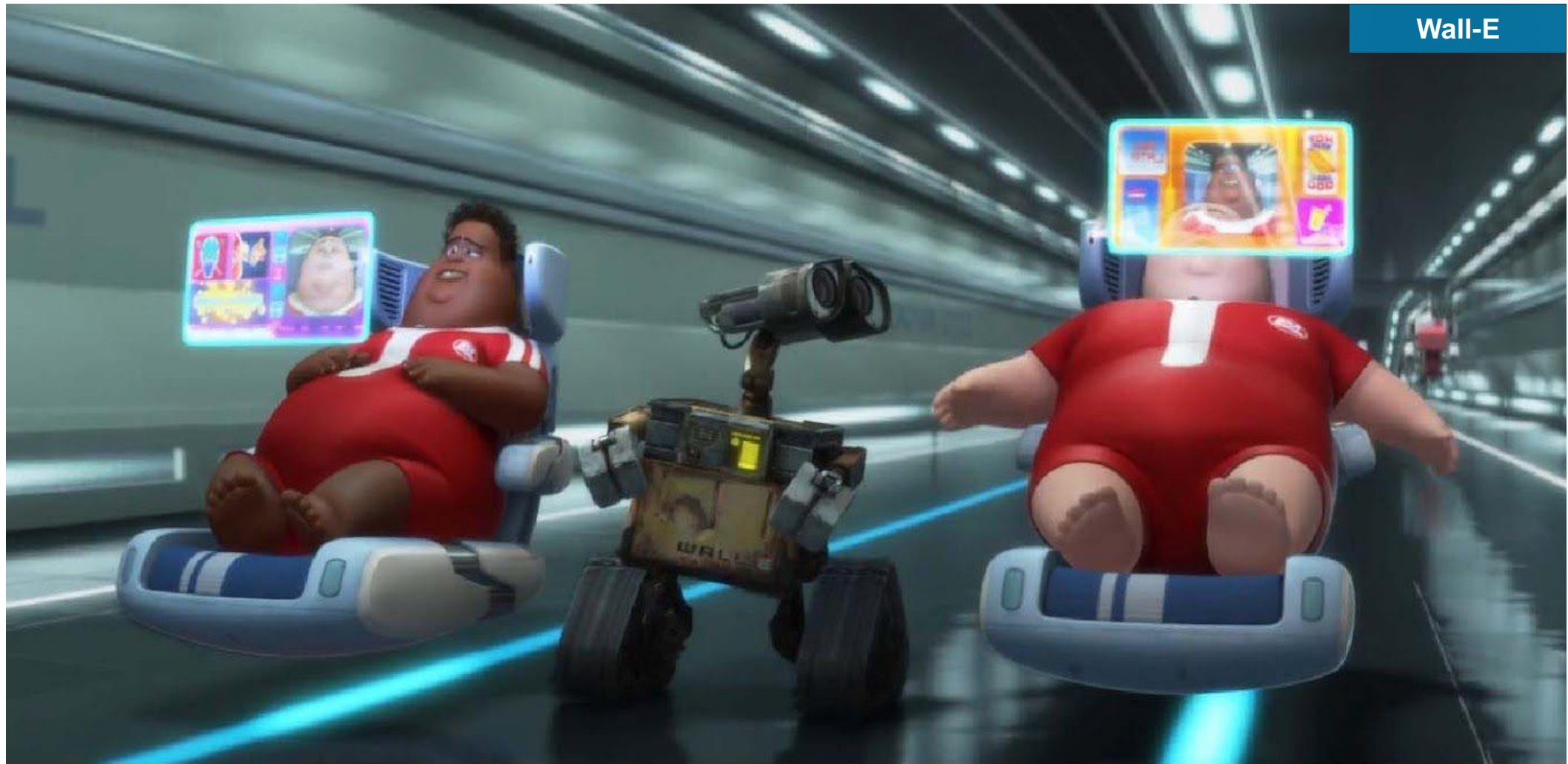


Disruptors and Instigators

Evolving mobility services and vehicles



Two Mobility Futures



Wall-E

Two Mobility Futures



Role of the Mobility Strategy

Preparing for the future we want

- Review systems and processes
- Celebrate where we're at
- Articulate our values
- Establish priorities
- Plan for implementation
- Measure our performance



Credit: Victoria News



4. Shaping Our Mobility Future

Build Partnerships

Leverage public and private connections



Ministry of
Transportation
and Infrastructure



Making a difference...together

Focus on High-Impact Opportunities

Make bold moves



Welcome All Voices

Provide easy, fun opportunities

- Connect in-person and online
- Be accessible and invite dialogue
- Articulate tradeoffs
- Reflect what's shared
- Work together to make decisions



LET'S
DEFINE OUR
MOBILITY
FUTURE

GO VICTORIA LAUNCH EVENT



SPEAKERS



VIDEOS



LOCAL ART



ACTIVITIES



VICTORIA
CONFERENCE
CENTRE
720 Douglas St



THURSDAY,
JAN 24, 2019
Doors at 6 p.m.
Event at 7 p.m.



RSVP VIA
EVENTBRITE
Open to the
public
Free

Go Victoria is a strategy to define our mobility future. It will improve transportation safety, increase mobility options, create a more sustainable and resilient city, and enhance the overall experience of getting around—whether you call Victoria home, commute into the city, or are here for a visit.



GOVICTORIA
Our Mobility Future

Lead with Values

Create tools to help make tough choices

Project Description	Ward	Ward	Location	Type	Primary Mode/Function										Weighting						Weighting						Weighting						Weighting						Weighting						Total Aggregate Score	Estimated Cost	Benefit to Cost Ratio Score						
					Driving	Walking	Biking	Transit	Maintenance	Health and Safety	Economy	Environment	Equity	Deliverability and Funding	Cost/Benefit	TBD - County Health	High-Injury Corridor/Intersection	Trail Gap Closure (missing/dysfunctional connection)	Sidewalk Gap Closure	Sidewalk Condition (pavement, dimensions, lighting)	Health and Safety Total Score	City/Plan Future Land-Use Centers and Corridors Implementation	Corridor Vehicle Delay	Corridor Person Delay	Economy Total Score	Environment	Tree Canopy on Major Walk/Bike Routes	Stormwater - Mapped Service Request Alignment	VMT (per capita)	Environment Total Score	Equity	Free and Reduced-Price Lunch School Proximity	School-Aged Children in Poverty	School Walk Accessibility Gap Analysis	Transit Access to High-Density Employment	Transit Service and Walk Access to Low-Income Populations	Access for Older Adults	Access for People with Disabilities	Equity Total Score	Deliverability and Funding	Project Readiness	Funding Partnership Opportunity	Other Repaving	Deliverability and Funding Total Score				Cost/Benefit					
15th/Razorback Intersection			15th St. and Razorback Road	Roundabout	x	x		x						5	3	-1	3	3	2.6							-2	3	5	2.0		5	2	-1	2.0		3	-3	4	0	5				1.8		4	4	-2	2.0		10.4	2	52
Archibald/Yell Blvd. Safety Improvements			MLK Blvd. to Rock Street	Signalization/Lane Reallocation		x								2	3	1	-1	5	2.0							4	4	4	4.0		2	5	1	2.7		5	5	5	5	5				5.0		4	2	1	2.3		16.0	2	80
Beechwood/MLK Signalization			Beechwood/MLK Intersection	Signalization	x	x								2	0	0	5	4	2.2							1	0	1	0.7		0	0	2	0.7		0	1	1	4	4				2.0		0	0	0	0.0		5.5	1	55
BRT Corridor Improvements			College Ave. Corridor	Transit Infrastructure				x																					0.7																					3			
Center/Harmon Intersection			Center and Harmon	Signalization	x	x		x						0	0	4	4	4	2.4							0	3	3	2.0		0	0	0	0.0				2	1	0			1.0		2	2	1	1.7		7.1	2	35	
Cleveland Street Area Walkability			Garland-Leverett	Sidewalk/ADA Ramp Const./Replacement		x								2	0	0	4	4	2.0							0	0	0	0.0		0	0	0	0.0				2	2				2.0		1	0	0	0.3		4.3	2	22	
College Avenue Corridor			North St. to City Limits	Corridor Improvements	x	x		x						5	0	5	5	5	4.0							5	-3	2	1.3		5	3	5	4.3				3	5	5			4.3		-3	1	0	-0.7		13.3	5	27	
College Avenue/Millsap Intersection Improvements			College Ave/Millsap St.	Intersection Impts.	x	x		x						3	5	3	5	3	3.8							3	4	4	3.7		0	0	0	0.0				5	5				5.0		1	1	0	0.7		13.1	3	44	
Downtown Sidewalk/Walkability Impts.			Various in Downtown Area	Sidewalk/ADA Ramp Const./Replacement		x			x					3	0	1	5	5	2.8							5	0	0	1.7		4	0	0	1.3				3	3	3			3.0		4	1	3	2.7		11.5	4	29	
Extend Wood Ave to 15th St.				New Location	x	x	x	x						1	0	0	1	0	0.4							2	1	3	2.0		0	5	1	2.0				0	3	3			2.0		0	0	0	0.0		6.4			
Fulbright Expwy Crossing			Steele Blvd/Mall Avenue	New Location	x	x	x																																														
Government/MLK Signalization			Government/MLK Intersection	Signalization										2	0	0	3	0	1.0							1	-1	0	0.0		0	0	1	0.3				1	2	2			1.7		-3	0	0	-1.0		2.0	1	20	
Gregg Ave-Left turn lanes at Sycamore and Poplar			Sycamore and Poplar	Intersection Impts.	x									0	0	0	0	0	0.0							0	3	3	2.0		0	0	0	0.0				0	0	0			0.0		3	0	0	1.0		3.0	2	15	
Hemlock St. Extension			Millsap St. to Masonic Dr.	New Location	x	x																																											3				
Highway 112 (Howard Nickell Rd.)			Howard Nickell Rd. to Van Asche	Widening										0	0	3	3	3	1.8							1	5	1	2.3		2	0	-4	-0.7				0	0	0			0.0		2	5	0	2.3		5.8			
Howard Nickell Road Impts.			Ripple Road-Hwy 112	Widening										0	0	3	3	3	1.8							1	5	1	2.3		2	0	-4	-0.7				0	0	0			0.0		2	5	0	2.3		5.8	1	58	
Hwy 112/Howard Nickell Road Improvements			112/Howard Nickell	Intersection Impts.	x									0	0	3	3	3	1.8							1	5	1	2.3		2	0	-4	-0.7				0	0	0			0.0		4	5	0	3.0		6.5			
Longview Extension			West of Plainview Ave.	New Location										0	0	0	3	0	0.6							1	2	2	1.7		0	0	1	0.3				0	0	0			0.0		1	0	0	0.3		2.9	2	15	
Mall Avenue Access Impts			Mall Avenue Near Joyce Blvd	Access Improvements	x									0	0	0	0	0	0.0							0	3	3	2.0		0	0	0	0.0				0	3	0			1.0		2	0	0	0.7		3.7	3	12	
Mall Avenue and Joyce Blvd Right Turn Lane			Mall/Joyce	Widening	x			x																																									1				
Maple Street Cycletrack			Gregg Ave. to Stadium Dr.	Bike/Pedestrian Improvements		x	x							5	0	5	2	3	3.0							1	-2	1	0.0		3	0	0	1.0				0	-1	0			-0.3		3	4	0	2.3		6.0	3	20	
Mission/Lafayette Bicycle Impts			North St. to College Ave.	Bike Facilities			x																																										2				
MLK Area Walkability Impts.			School Avenue-College Avenue	Sidewalk/ADA Ramp Const./Replacement		x			x																																							3					
MLK Blvd. Safety Improvements			Stadium Drive-Razorback Road	Safety Improvements/Signalization	x	x		x						4	4	0	0	4	2.4							2	0	2	1.3		0	0	0	0.0				0	0	0			0.0		2	0	0	0.7		4.4	2	22	

Create tools to help make tough choices

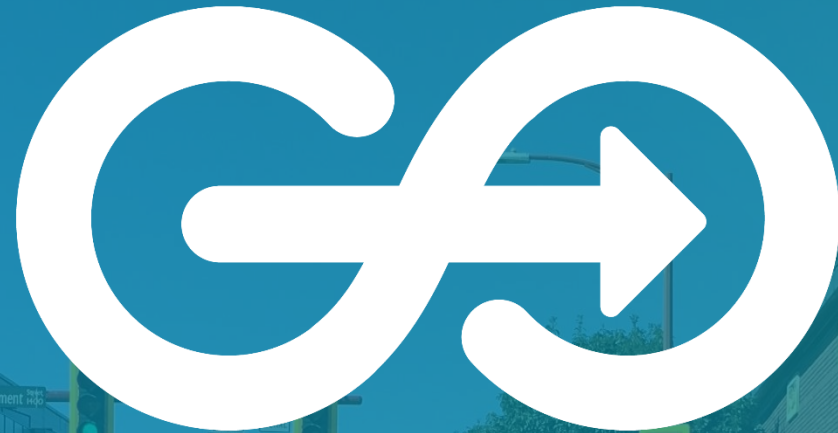
27

Lead with Values

Articulate and measure what matters

- Adaptability and Resilience
- Beauty and Unique Character
- Economic Vibrancy
- Inclusiveness and Equity
- Individual Health and Wellbeing
- Safety and Security
- Strong and Engaged Community
- Sustainable Ecology
- Transparent Governance
- Well Maintained, Efficient Systems





GOVICTORIA

Our Mobility Future

#GoVictoria