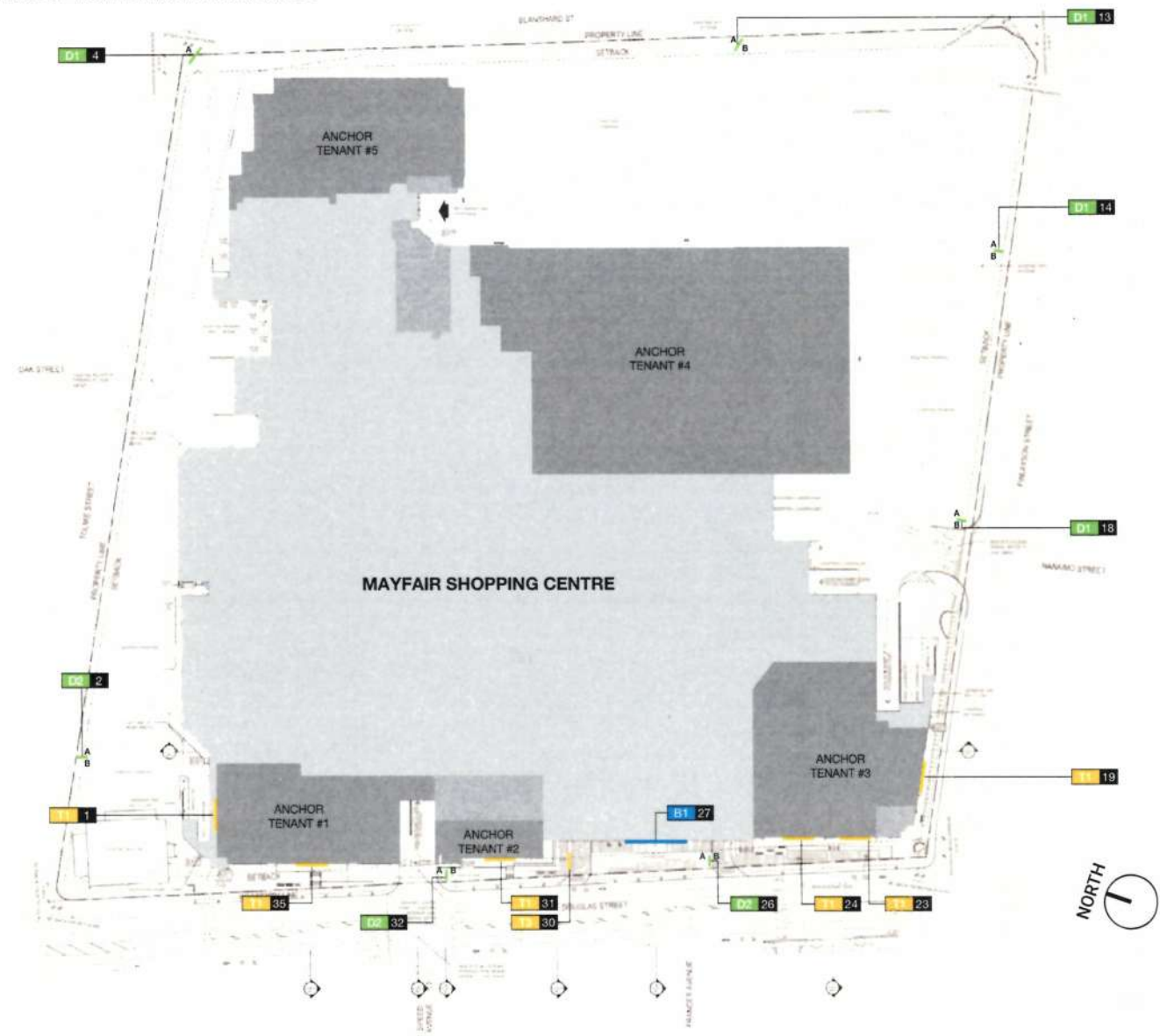


LOCATION PLAN

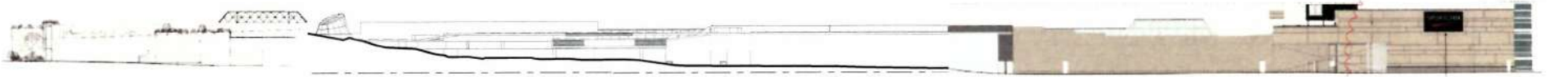
LOCATIONS OF SIGNAGE REQUIRING VARIANCES FROM BYLAW STANDARDS

Legend		
<div><div>A1</div><div>01</div></div> <div>Sign Number</div> <div>Sign Type</div>		
Sign Type	Mounting	
B1	Mall ID	Fascia
D1	Primary Site Directional	Freestanding
D2	Secondary Site Directional	Freestanding
T1	Anchor Tenant ID	Fascia
T2	Tenant ID	Freestanding



ELEVATIONS  
LOCATIONS OF SIGNAGE REQUIRING VARIANCES FROM BYLAW STANDARDS

Legend	
AT 1	Sign Number
—	Sign Type
Sign Type	
Wall ID	Mounting
Anchor Tagged ID	Face



Sign Location - Central Store  
Date: 11/1/19



ANCHOR TENANT #1  
• Max. Sign Size = 12' x 23' = (276 sq ft)



Sign Location - Central Store  
Date: 11/1/19



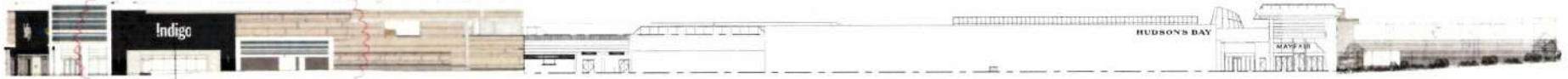
ANCHOR TENANT #1  
• Max. Sign Size = 9' 4" x 30' = (283 sq ft)

ANCHOR TENANT #2  
• Max. Sign Size = 9' 4" x 30' = (283 sq ft)

BUILDING IDENTIFICATION  
• Max. Sign Size = 7' 0" x 50' = (350 sq ft)

ANCHOR TENANT #3  
• Max. Sign Size = 12' x 23' = (276 sq ft)

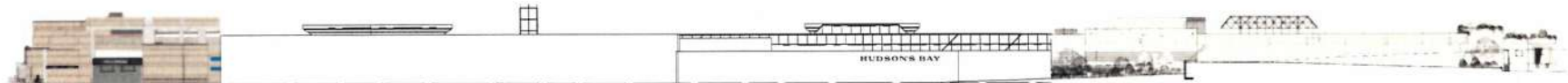
ANCHOR TENANT #5  
• Max. Sign Size = 12' x 23' = (276 sq ft)



Sign Location - Premium Store  
Date: 11/1/19

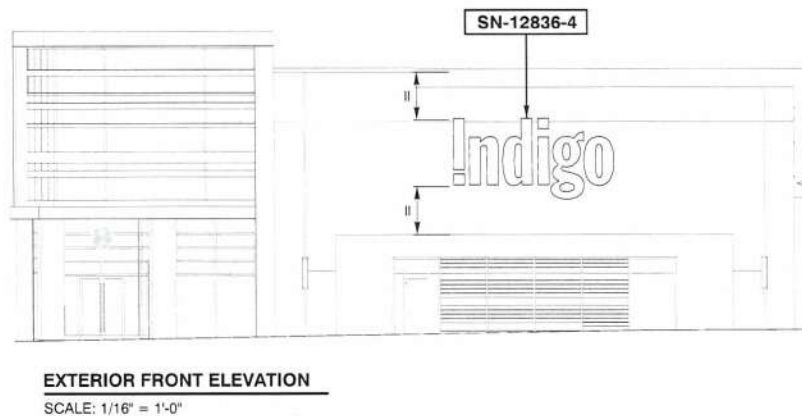
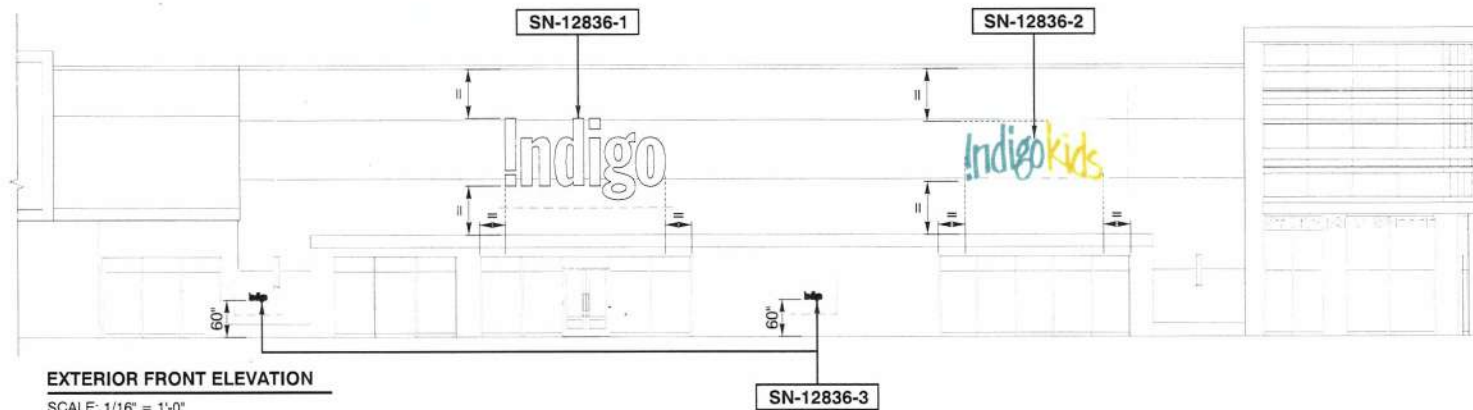


ANCHOR TENANT #3  
• Max. Sign Size = 12' x 23' = (276 sq ft)



Sign Location - Premium Store  
Date: 11/1/19





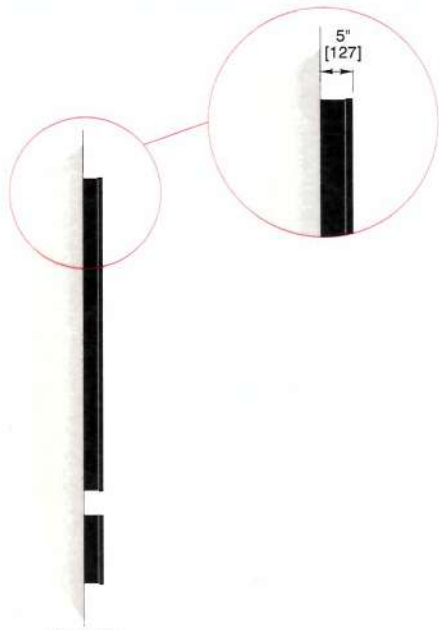
# REVISIONS

No.	DESCRIPTION	Init.	Ver.	DATE
00	PRODUCTION	MV		18-05-03
01	PRODUCTION	MV		18-08-22
02	PRODUCTION	MV		18-09-05

**m** 4130, Highway 440 West  
 South service road  
 Laval (Quebec) H7T 0H3  
 Phone: 450 668 4888  
 Phone: 514 955 3333  
 Fax: 450 668 8822

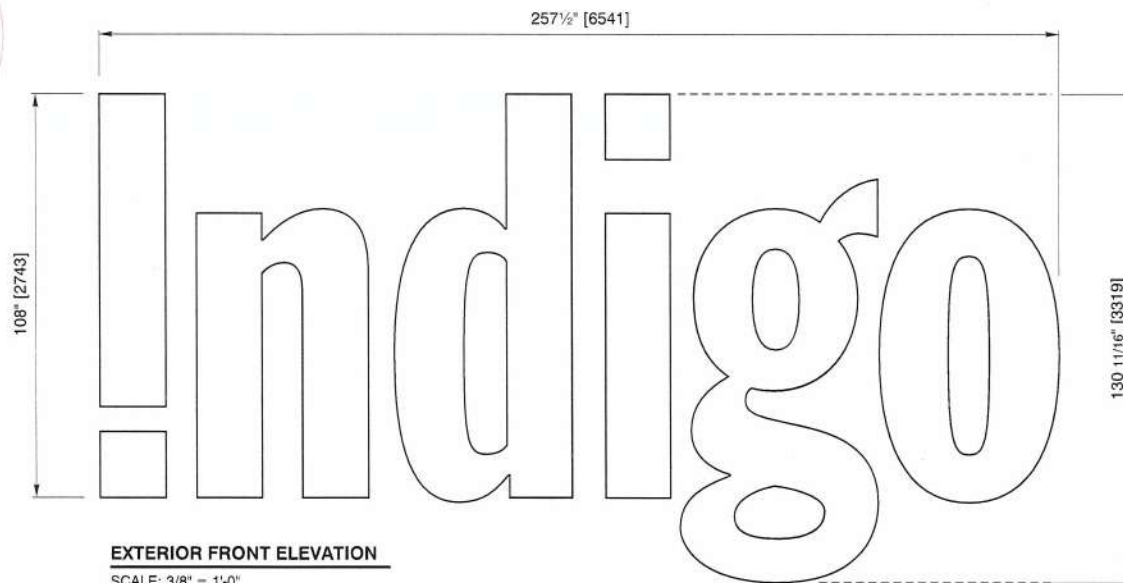
REPRODUCTION, CANNING AND NOT PERMITTED WITHOUT  
 AUTHORIZATION OF MONTREAL SIGN

ACCOUNT EXEC.	RICHARD MONETTE
PROJECT MANAGER	CATHERINE QUESNEL-DUPRAS
CLIENT	INDIGO BOOKS & MUSIC INC 468 KING STREET WEST SUITE 500 TORONTO, ON
SITE/PROJECT	INDIGO - 963 MAYFAIR SHOPPING CENTRE 3147 DOUGLAS STREET - UNIT N116 VICTORIA, BC
TITLE	EXTERIOR FRONT ELEVATION
FILE	12836_ELEVATIONS_R02
	01 02



#### PROFILE

SCALE: 3/8" = 1'-0"



#### EXTERIOR FRONT ELEVATION

SCALE: 3/8" = 1'-0"

#### CHANNEL LETTERS

QTY	1	SN-12836-1
QTY	1	SN-12836-4
MODEL	I-EXT-108	
INSTALLATION		
EXTERIOR	ILLUMINATED	

Indigo

#### REVISIONS

No.	DESCRIPTION	Init.	Ver.	DATE
00	PRODUCTION	MV		18-05-03
01	PRODUCTION	MV		18-08-22
02	PRODUCTION	MV		18-09-05



4130, Highway 440 West  
South service road  
Laval (Québec) H7T 0H3  
Phone: 450 668 4888  
Fax: 450 668 8822

REPRODUCTION, COPYING AND NOT PERMITTED WITHOUT  
AUTHORIZATION OF MONTREAL NEON

ACCOUNT EXEC.

RICHARD MONETTE

PROJECT MANAGER

CATHERINE QUESNEL-DUPRAS

CLIENT

INDIGO BOOKS & MUSIC INC

468 KING STREET WEST  
SUITE 500  
TORONTO, ON

SITE/PROJECT

INDIGO - 963  
MAYFAIR SHOPPING CENTRE  
3147 DOUGLAS STREET - UNIT N116  
VICTORIA, BC

TITLE: GRAPH. ELEVATIONS

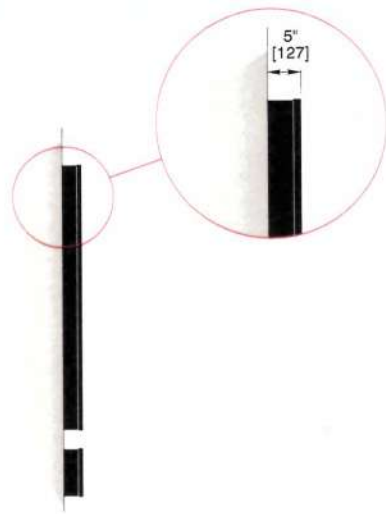
FILE: 12836-1-4\_R02

01  
03

POSTING SURFACE		ft <sup>2</sup>	m <sup>2</sup>	lb	kg
130 11/16" x 257 1/2"		3319mm x 6541mm	203.29	18.89	XXX
# NOTES					
N1 ELECTRIC OUTLETS (TO BE DETERMINED)					
#	CLIENT COLOURS	PRODUCTION COLOURS	BY	FINISH	
M1	WHITE	#7328	BASE	TRANS.	
M2	BLACK	PREPAINTED BLACK (COIL)	BASE	MAT	
M3	BLACK	PIGMENTED BLACK TRIM	BASE	MAT	

COLOURS PRINTED ON THIS DRAWING COULD BE DIFFERENT FROM THE REAL COLOURS





# PROFILE

SCALE: 3/8" = 1'-0"



# EXTERIOR FRONT ELEVATION

SCALE: 3/8" = 1'-0"

# CHANNEL LETTERS

QTY	1	SN-12836-2
INSTALLATION		
EXTERIOR		ILLUMINATED



POSTING SURFACE		ft²	m²	lb	kg
96 1/8" x 223"	2442mm x 5664mm	148.86	13.83	XX	XX
# NOTES					
N1	ELECTRIC OUTLETS TO BE DETERMINED				
#	CLIENT COLOURS	PRODUCTION COLOURS	BY	FINISH	
M1	WHITE	#7328		BASE	TRANS.
M2	BLACK	PREPAINTED BLACK (COIL)		BASE	MAT
M3	BLACK	PIGMENTED BLACK TRIM		BASE	MAT
V1	CLEAR	CLEAR LAMINATE BY OTHERS		BASE	MAT
D1	DIGITAL PRINTING PMS 2232C	PRINT ON CLEAR VINYL BY OTHERS		BASE	CLEAR
D2	DIGITAL PRINTING PMS 7758C	PRINT ON CLEAR VINYL BY OTHERS		BASE	CLEAR

COLOURS PRINTED ON THIS DRAWING COULD BE DIFFERENT FROM THE REAL COLOURS

# REVISIONS

No.	DESCRIPTION	Init.	Ver.	DATE
00	PRODUCTION	MV		18-05-03
01	PRODUCTION	MV		18-08-22
02	PRODUCTION	MV		18-09-05

**m** 4130, Highway 440 west  
South service road  
Laval (Québec) H7T 0H3  
Phone: 450 668 4888  
Phone: 514 955 3333  
Fax: 450 668 8822

REPRODUCTION COPIES ARE NOT PERMITTED WITHOUT AUTHORIZATION OF MONTREAL NEON

ACCOUNT EXEC. RICHARD MONETTE

PROJECT MANAGER CATHERINE QUESNEL-DUPRAS

CLIENT

**INDIGO BOOKS & MUSIC INC**  
468 KING STREET WEST  
SUITE 500  
TORONTO, ON

SITE/PROJECT **INDIGO - 963 MAYFAIR SHOPPING CENTRE**  
3147 DOUGLAS STREET - UNIT N116  
VICTORIA, BC

TITLE **GRAPH. ELEVATIONS**

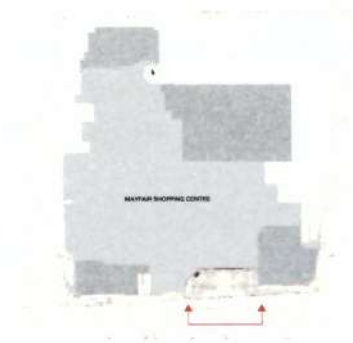
FILE **12836-2\_R02** 01 03



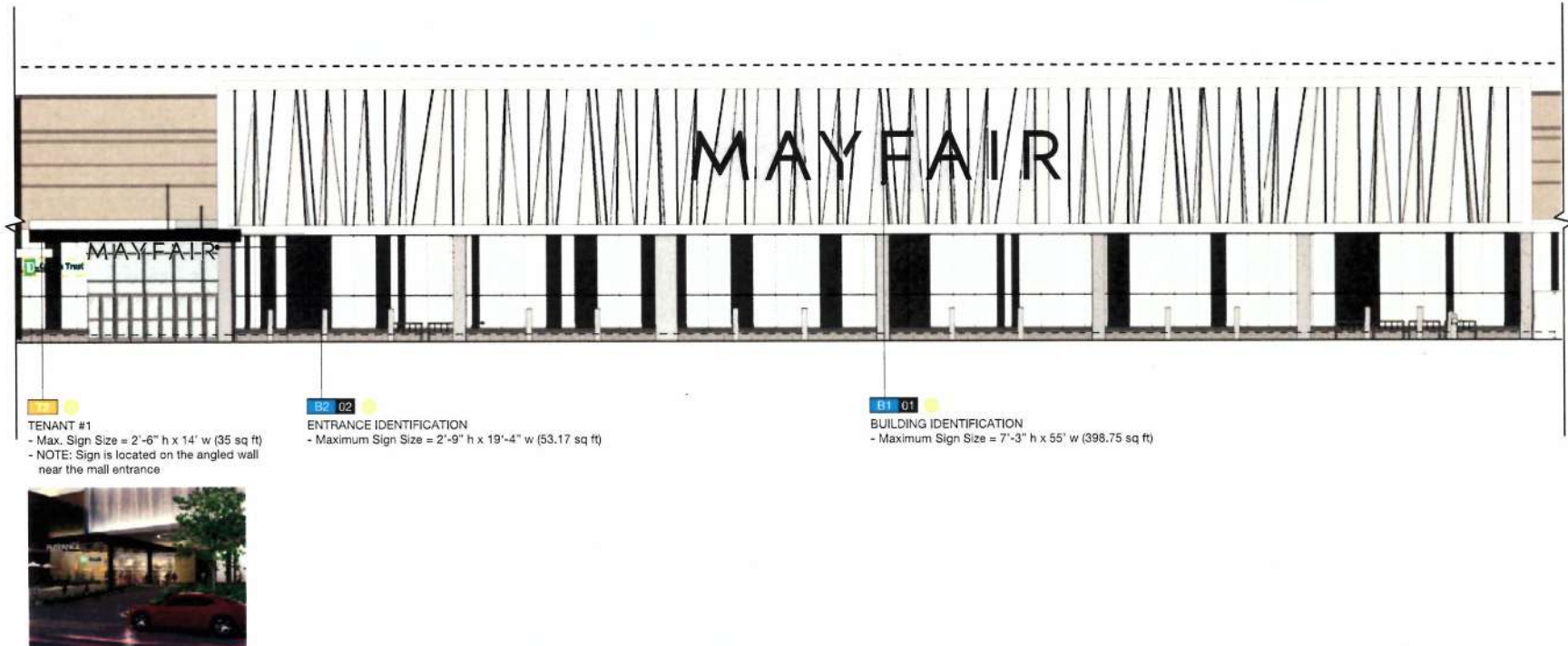




ELEVATIONS  
PARTIAL WEST ELEVATION



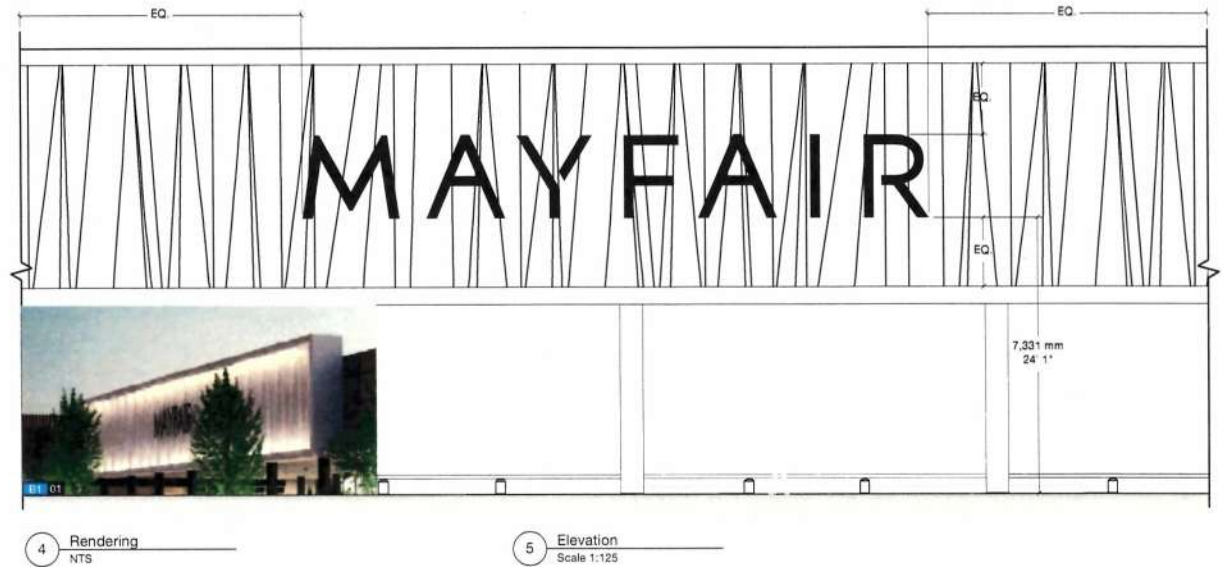
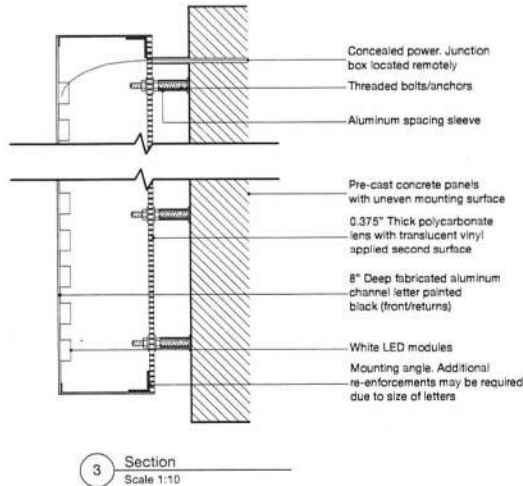
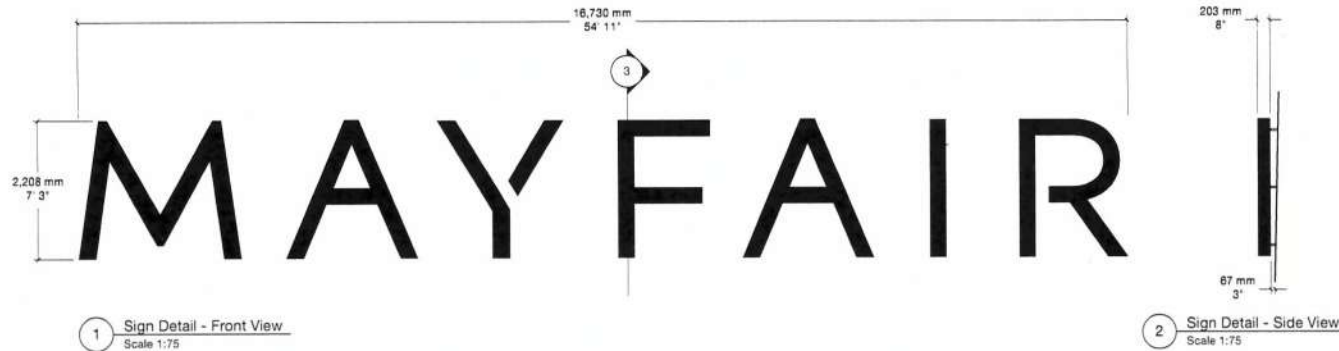
Legend		
A1 01	Illuminated	Maximum Sign Size
	Sign Number	Sign Placement Area
Sign Type	Mounting	
B1	Mall ID	Fascia
B2	Entrance ID	Suspended
D1	Primary Site Directional	Freestanding
D2	Secondary Site Directional	Freestanding
P1	Parking Entrance ID	Fascia
P2	Parking Entrance ID	Freestanding
P3	Parking Height Restriction	Suspended
P4	Parking Zone ID	Freestanding
P5	Parking ID	Freestanding
P6	Parking Information	Freestanding
L1	Loading Bay ID	Fascia
A1	Anchor Tenant ID	Fascia
T1	Tenant ID	Fascia or Suspended
T2	Tenant ID	Freestanding





# SIGNAGE SPECIFICATIONS

## SIGN TYPE B1

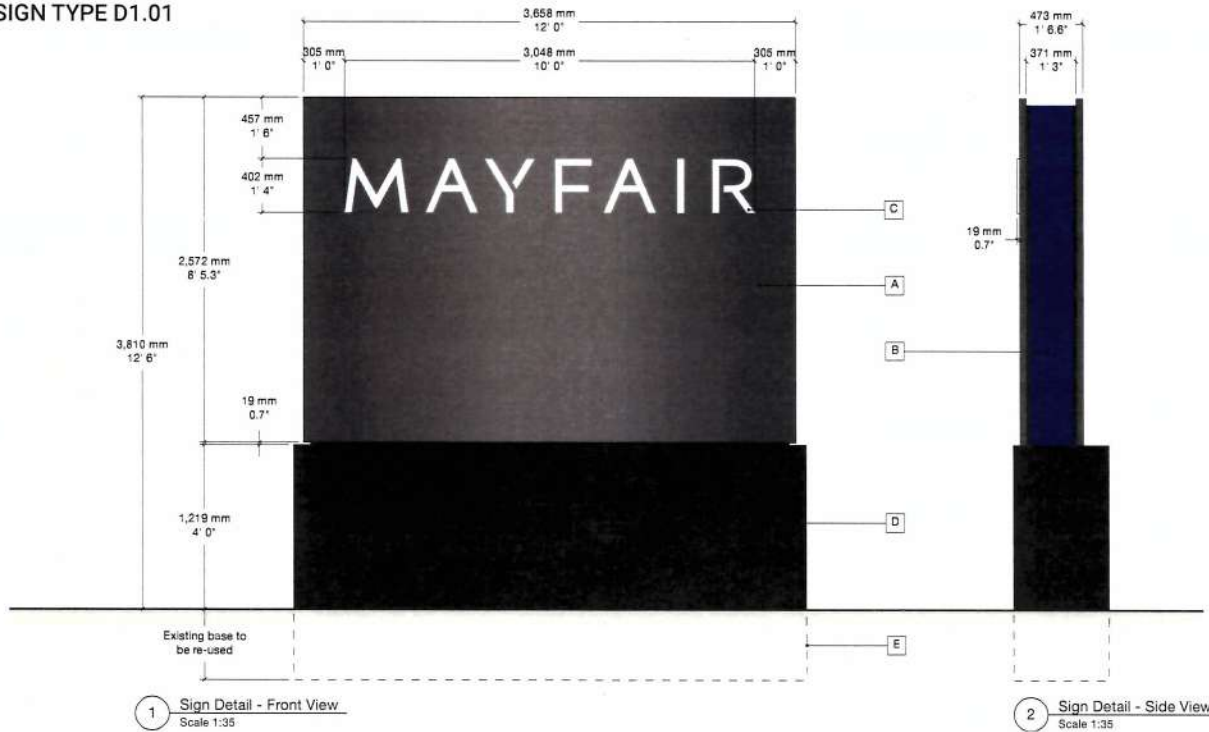


### B1 Sign Type B1: Mail ID Fascia (Single Sided)

- A Channel Letters:  
8" Deep fabricated aluminum channel letters painted black (front/returns). Halo-lit with white LED illumination.
- B Installation:  
Stud mounted to uneven pre-cast concrete panels. Power/bolts concealed with sleeves. Engineered shop drawings required.
- Notes:
- Signage contractor to confirm all dimensions on site prior to fabrication.
  - Attachment method to be confirmed by the signage contractor and approved by the GC/Client.
  - Engineered shop drawings required.
  - All building penetrations to be sealed and watertight.
  - Full size mock-up required for review on site.

# SIGNAGE SPECIFICATIONS

## SIGN TYPE D1.01



**3 Exploded View**  
NTS

### D1 Sign Type D1.01: Primary Site Directional Freestanding (Single Sided)

- A Sign Cabinet:**  
1'-6.625" Deep frameless aluminum sign cabinet painted dark grey. LED illumination. No visible fasteners on face.
- B Sign Cabinet (Returns):**  
0.5" Thick clear acrylic panels (sides) with translucent purple vinyl applied to second surface. 0.25" acrylic diffusers. Illuminated from behind with Rosco light panels.
- C Logo/Branding:**  
0.75" Thick push-through clear acrylic logo with translucent white vinyl applied to first surface.
- D Base:**  
Existing base/power to be used. Sign to hide existing lights in base.
- E Footing:**  
Existing concrete foundation to remain.

**Notes:**

- Signage contractor to confirm all dimensions on site prior to fabrication.
- Attachment method to be confirmed by the signage contractor and approved by the GC/Client.
- Engineered shop drawings required.
- Full size paper mock-up required for review on site.
- Existing sign to be removed by signage contractor.

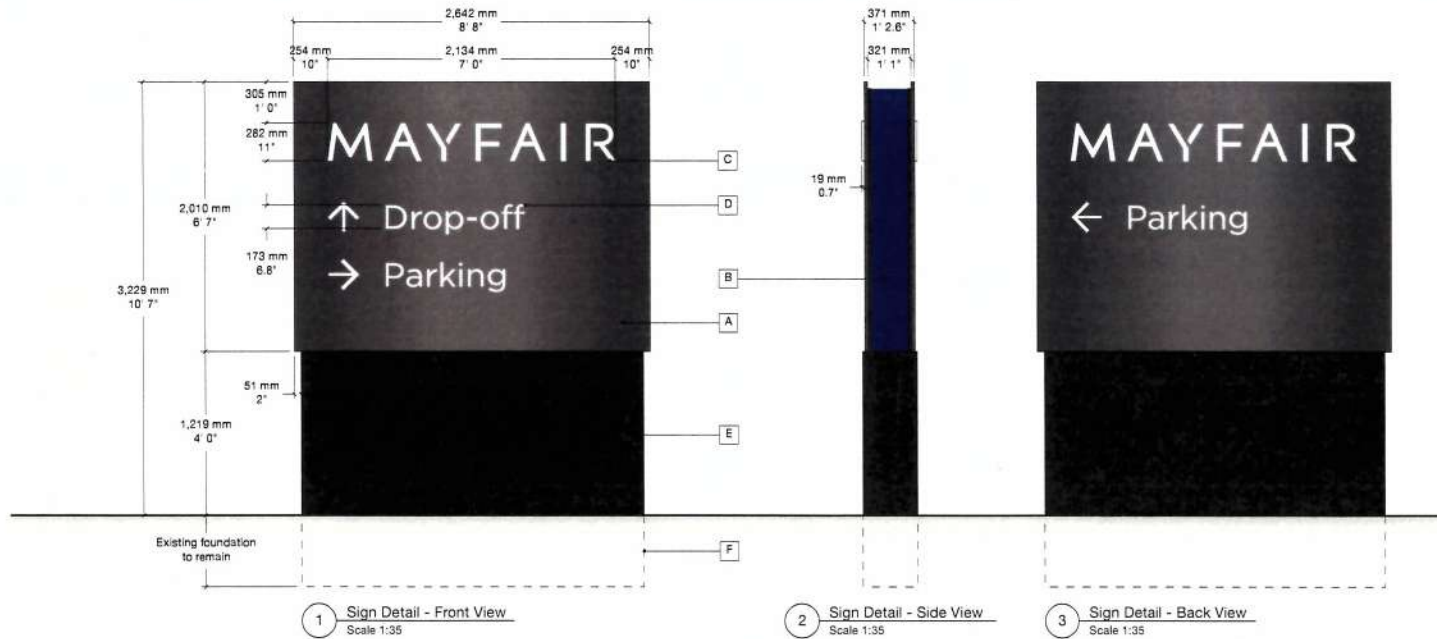


**D1 01**

**4 Sign Location**  
NTS

# SIGNAGE SPECIFICATIONS

## SIGN TYPE D1.03



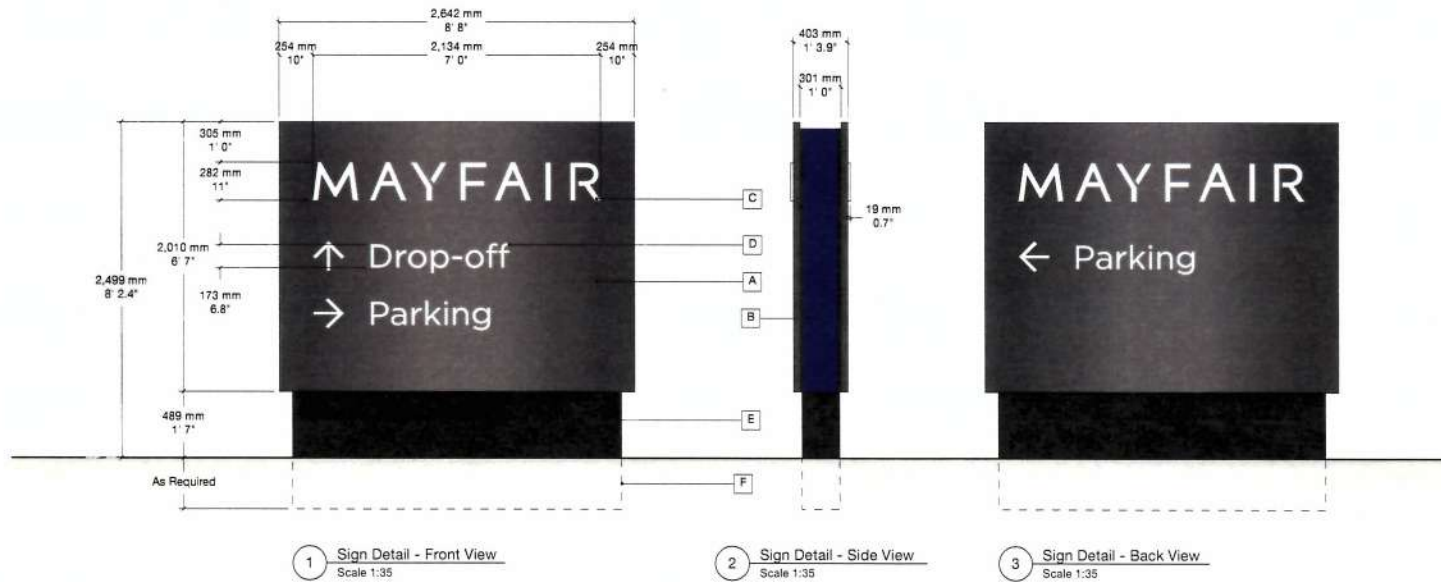
4 Exploded View  
NTS

- D1** Sign Type D1.03: Primary Site Directional Freestanding (Double Sided)
- A** Sign Cabinet:  
1'-2.625" Deep frameless aluminum sign cabinet painted dark grey. LED illumination. No visible fasteners on face.
  - B** Sign Cabinet (Returns):  
0.5" Thick clear acrylic panels (sides) with translucent purple vinyl applied to second surface. 0.25" acrylic diffusers. Illuminated from behind with Rosco light panels.
  - C** Logo/Branding:  
0.75" Thick push-through clear acrylic logo with translucent white vinyl applied to first surface.
  - D** Arrows/Type:  
Cut-through text/graphics backed with clear acrylic. Translucent white vinyl applied to first surface of acrylic.
  - E** Base:  
Existing base/power to be used. Sign to hide existing lights in base.
  - F** Footings:  
Existing concrete foundation to remain.
- Notes:**
- Signage contractor to confirm all dimensions on site prior to fabrication.
  - Attachment method to be confirmed by the signage contractor and approved by the GC/Client.
  - Engineered shop drawings required.
  - Existing sign to be removed by signage contractor.



5 Sign Location  
NTS

SIGNAGE SPECIFICATIONS  
SIGN TYPE D1.04

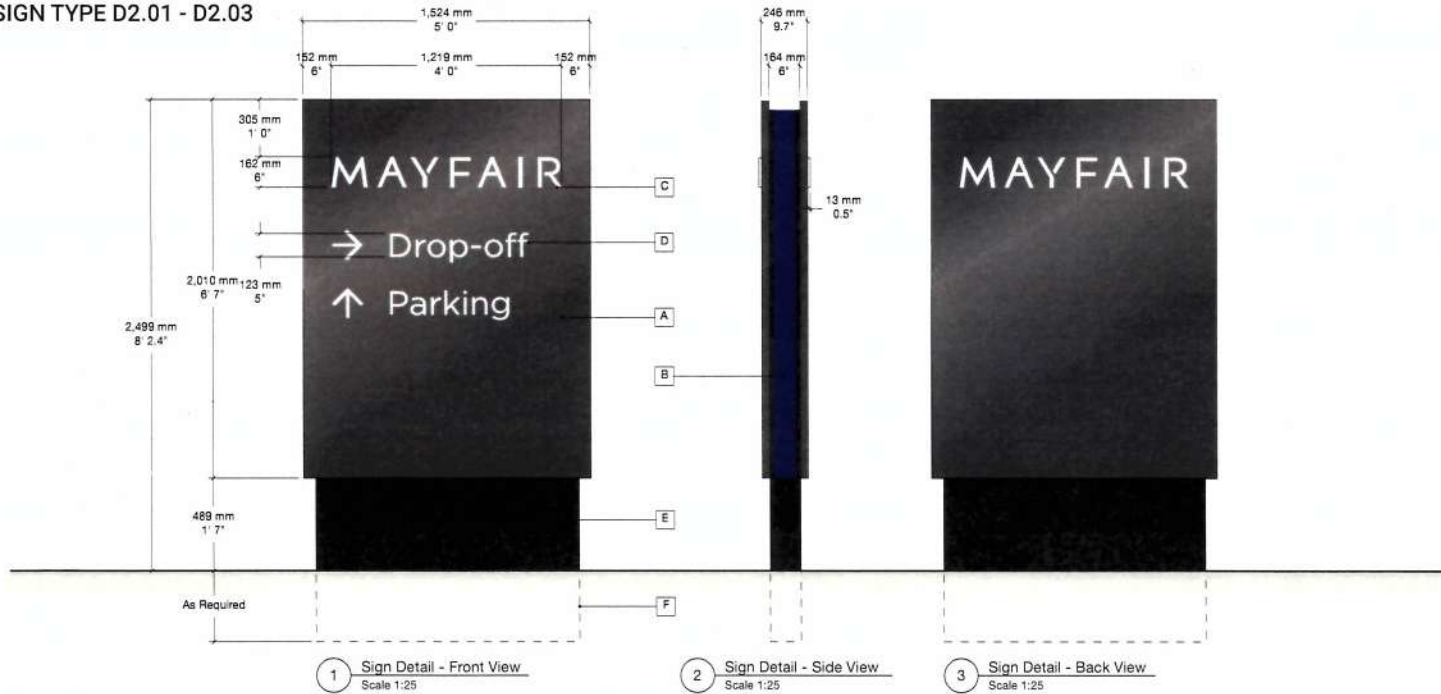


- D1 Sign Type D1.04: Primary Site Directional**  
Freestanding (Double Sided)
- A Sign Cabinet:**  
1'-4" Deep frameless aluminum sign cabinet painted dark grey. LED illumination. No visible fasteners on face.
- B Sign Cabinet (Returns):**  
0.5" Thick clear acrylic panels (sides) with translucent purple vinyl applied to second surface. 0.25" acrylic diffusers. Illuminated from behind with Rosco light panels.
- C Logo/Branding:**  
0.75" Thick push-through clear acrylic logo with translucent white vinyl applied to first surface.
- D Arrows/Type:**  
Cut-through text/graphics backed with clear acrylic. Translucent white vinyl applied to first surface of acrylic.
- E Base:**  
11" Deep aluminum base with structural supports for sign cabinet. Base painted black.
- F Footing:**  
Signage fabricator to confirm footing details and provide stamped engineered drawings.
- Notes:**  
- Signage contractor to confirm all dimensions on site prior to fabrication.  
- Attachment method to be confirmed by the signage contractor and approved by the GC/Client.  
- Engineered shop drawings required.



# SIGNAGE SPECIFICATIONS

## SIGN TYPE D2.01 - D2.03



### D2 Sign Type D2: Secondary Site Directional Freestanding (Double Sided)

- A Sign Cabinet:**  
9.75" Deep frameless aluminum sign cabinet painted dark grey. LED illumination. No visible fasteners on face.
- B Sign Cabinet (Returns):**  
0.25" Thick clear acrylic panels (sides) with translucent purple vinyl applied to second surface, 0.25" acrylic diffusers. Illuminated from behind with Rosco light panels.
- C Logo/Branding:**  
0.5" Thick push-through clear acrylic logo with translucent white vinyl applied to first surface.
- D Arrows/Type:**  
Cut-through text/graphics backed with clear acrylic. Translucent white vinyl applied to first surface of acrylic.
- E Base:**  
6.5" Deep aluminum base with structural supports for sign cabinet. Base painted black.
- F Footing:**  
Signage fabricator to confirm footing details and provide stamped engineered drawings.

**Notes:**

- Signage contractor to confirm all dimensions on site prior to fabrication.
- Attachment method to be confirmed by the signage contractor and approved by the GC/Client.
- Engineered shop drawings required.
- See message schedule for text to appear on each sign.



**4 Exploded View**  
Scale NTS

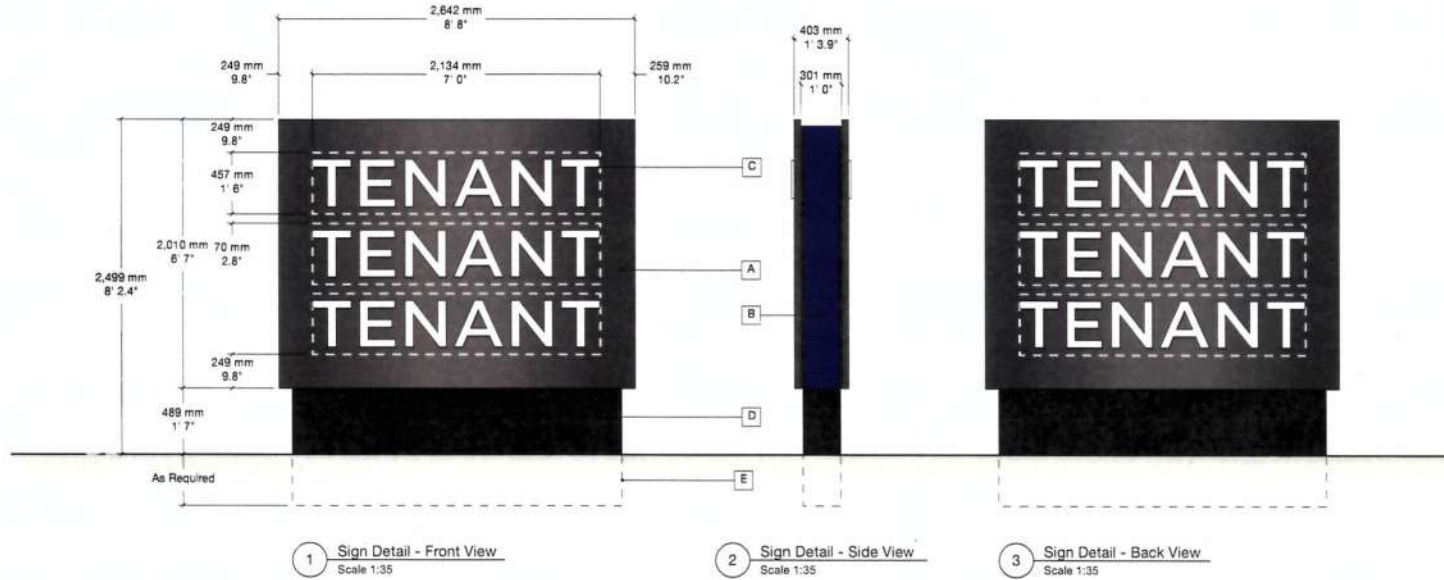


**5 Sign Locations**  
Scale NTS



## SIGNAGE SPECIFICATIONS

### SIGN TYPE T3

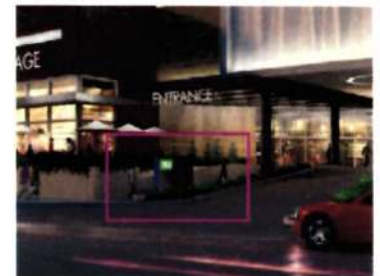


#### T3 Sign Type T3: Tenant ID Freestanding (Double Sided)

- A** Sign Cabinet:  
1'-4" Deep frameless aluminum sign cabinet painted dark grey.  
LED illumination. No visible fasteners on face.
- B** Sign Cabinet (Returns):  
0.5" Thick clear acrylic panels (sides) with translucent purple vinyl applied to second surface. 0.25" acrylic diffusers.  
Illuminated from behind with Rosco light panels.
- C** Logo/Branding:  
0.5" Thick push-through clear acrylic logos with translucent white/coloured vinyl applied to first surface. Tenant graphics area is 7' wide x 1'-6" high.
- D** Base:  
11" Deep aluminum base with structural supports for sign cabinet. Base painted black.
- E** Footings:  
Signage fabricator to confirm footing details and provide stamped engineered drawings.

**Notes:**

- Signage contractor to confirm all dimensions on site prior to fabrication.
- Attachment method to be confirmed by the signage contractor and approved by the GC/Client.
- Engineered shop drawings required.



4 Rendering  
Scale NTS