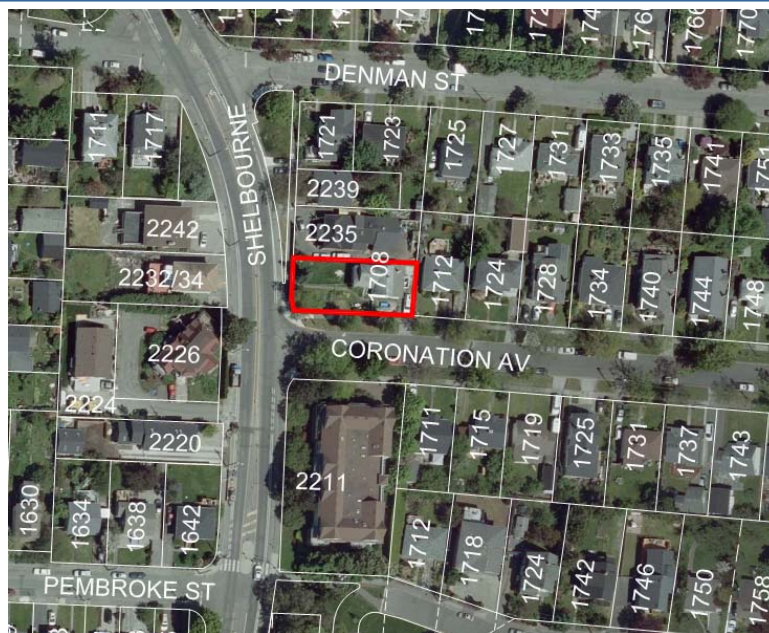


---

# Rezoning and Development Permit with Variances Application for 1708 Coronation Avenue



---

## Subject Property



---

## 1712 Coronation Avenue (east)



---

2235 Shelbourne Street (north)



---

2211 Shelbourne Street (south)





---

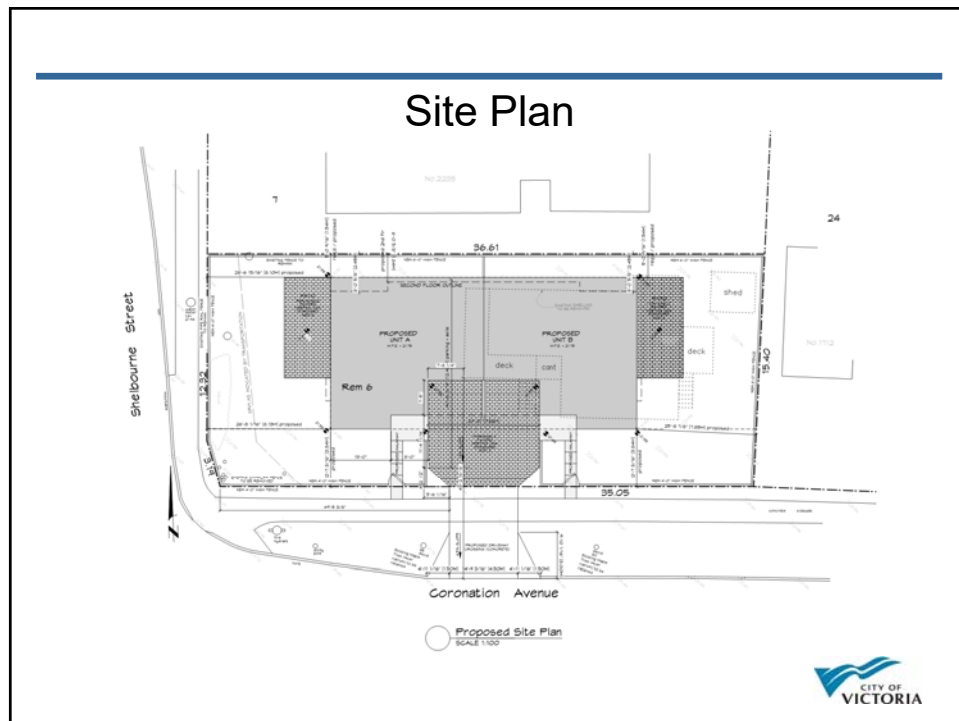
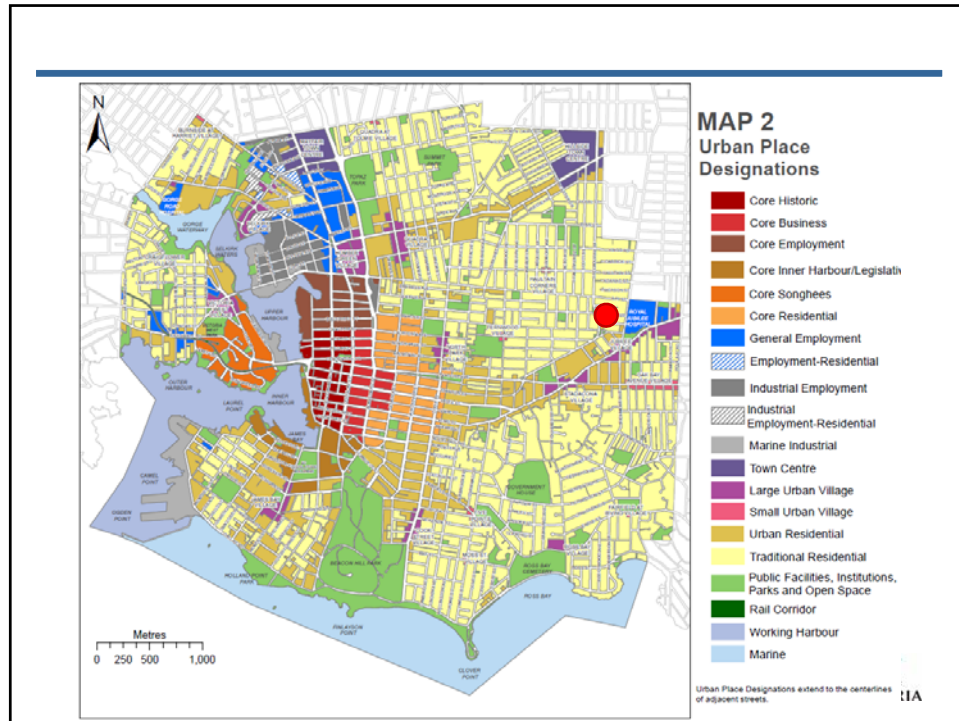
2232/2234 Shelbourne Street (west)



---

2226 Shelbourne Street (south-west)





## Front Elevation



## Rear Elevations



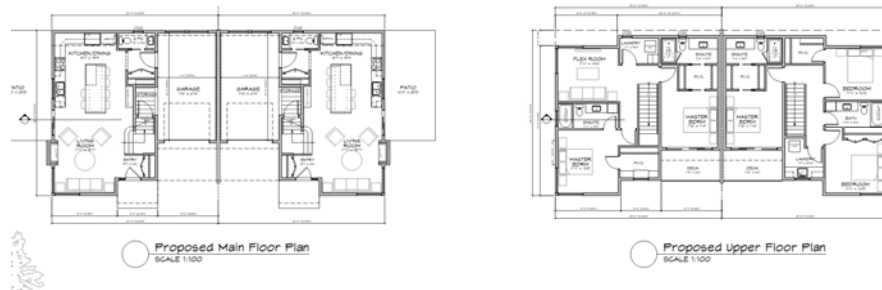
## Side Elevations (west)



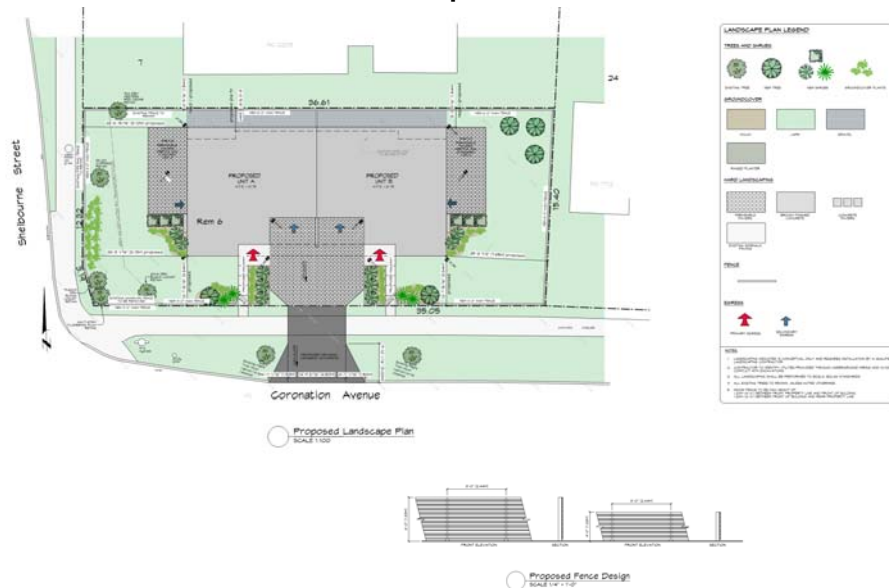
## Side Elevations (east)



## Floor Plan



## Landscape Plan





## Streetscapes



## Colour Board

