



Member Agency Update

City of Victoria




Acknowledgement of Traditional Lekwungen Territory

Songhees Nation

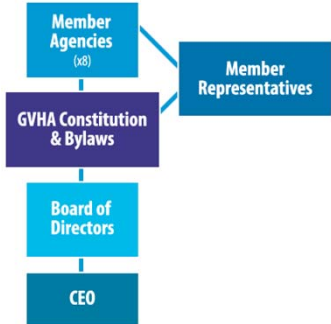


Esquimalt Nation





Governance



```


graph TD
    A[Member Agencies (x8)] --- B[GVHA Constitution & Bylaws]
    B --- C[Board of Directors]
    C --- D[CEO]
    A --- E[Member Representatives]
            
```

City of Victoria Member Agency Representative

- Councillor Isitt

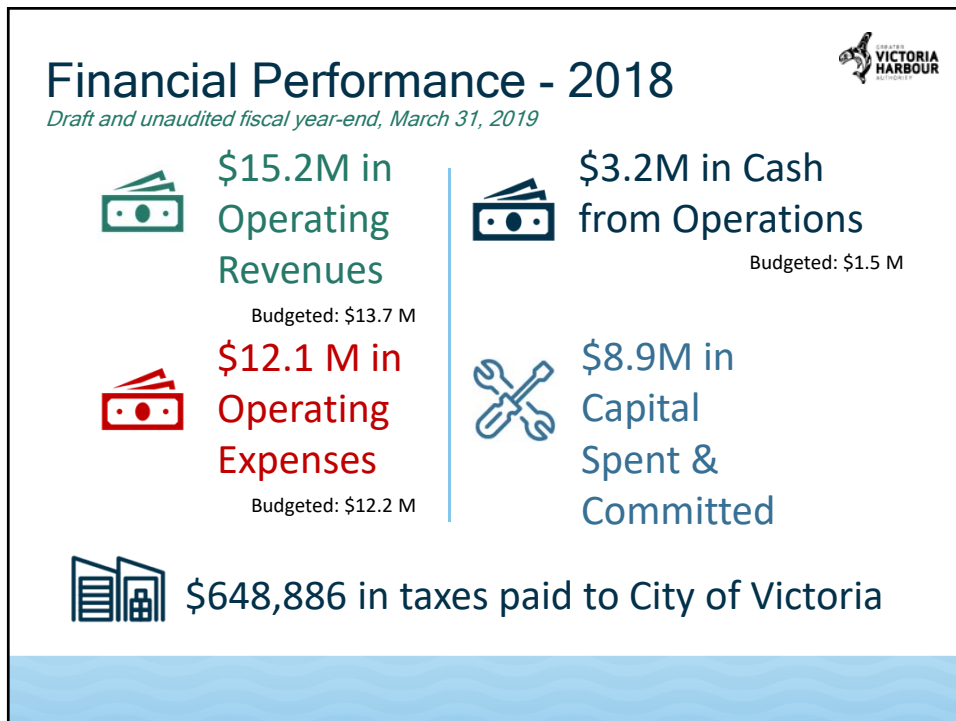
City of Victoria Representative on Board of Directors

- Councillor Collins



Governance

DAVE COWEN	DESTINATION GREATER VICTORIA	DECEMBER 31, 2019
CHRISTINE WILLOW	CHAMBER	DECEMBER 31, 2019
RYAN BURLES	VICTORIA/ESQUIMALT HARBOUR SOCIETY	DECEMBER 31, 2019
SUSAN BRICE	CAPITAL REGIONAL DISTRICT	DECEMBER 31, 2020
LAUREL COLLINS	CITY OF VICTORIA	DECEMBER 31, 2020
ROB THOMAS	ESQUIMALT NATION	DECEMBER 31, 2021
STARR MCMICHAEL	INDEPENDENT	DECEMBER 31, 2021
GORDON SAFARIK	INDEPENDENT	DECEMBER 31, 2021
BARB DESJARDINS	TOWNSHIP OF ESQUIMALT	DECEMBER 31, 2021
DOUG CROWDER	INDEPENDENT	DECEMBER 31, 2022
MARGARET LUCAS	INDEPENDENT	DECEMBER 31, 2022
CHRISTINA CLARKE	SONGHEES NATION	DECEMBER 31, 2022
VACANT	VICTORIA/ESQUIMALT HARBOUR SOCIETY	VACANT



First Nations & Indigenous Peoples Engagement



- A Progressive Aboriginal Relations (PAR) Committed Organization
- Esquimalt Nation & Songhees Nation are Member Agencies
- New First Nations Engagement Manager on our Leadership Team
- On our facilities:
 - The Unity Wall at the Breakwater
 - First Nations Causeway Artists Program
 - Signs of Lekwungen



Cruise Operations

- One of the highest-ranked ports on the West Coast for visitor satisfaction
- Plays a critical role in the Alaskan itinerary for many cruise lines

2019 Season

- Welcoming 15 brands, including the Cunard Queen Elizabeth and Royal Caribbean Ovation of the Seas
- 264 ship calls currently confirmed
- ~700,000 passengers, ~300,000 crew





Value of Cruise to Victoria

- >\$130 million annual benefit to the regional economy
- Responsible for 800 direct and indirect jobs
- Contributes ~58% of GVHA annual revenues
- A key driver in the visitor economy:
 - 'Likelihood to return' after a cruise is 72% for overseas visitors and 90% for short-haul US markets





Sustainability - Cruise Ship Emissions

- The International Maritime Organization (IMO) is responsible for setting global standards, including environmental performance, for all international shipping; this is inclusive of all cruise lines.
- The cruise lines operating along the west coast of North America must meet or exceed strict environmental and emissions standards set forward by the IMO within the, "North American Emissions Control Area."
- Cruise ship emissions make up **0.2%** of all global carbon dioxide emissions from fossil fuel combustion.



Sustainability - Shore Power





Cleaner power generation. 

Power capacity. 

of ships that are capable. 

Length of time in port. 

Cost of power per kWh. 

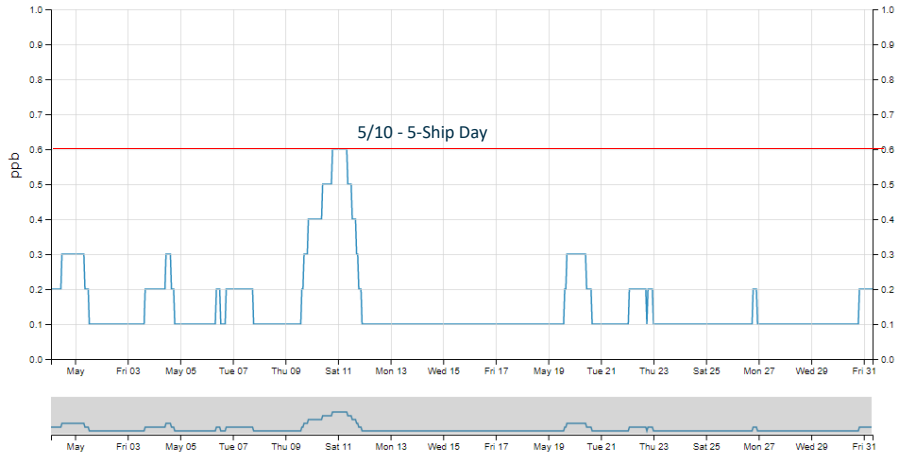
Reliable energy. 



Sustainability - Air Monitoring

- We support and fund the James Bay environmental air monitoring station.
- This station has not had any elevated readings in more than two years, and SO2 emissions remain well below recommended safe levels.

Sustainability - Air Monitoring



BC Ministry of Environment Air Quality Objective is the provincial acceptable limit for the following pollutant concentrations: SO₂ = 70 ppb

Sustainability - Ground Transportation



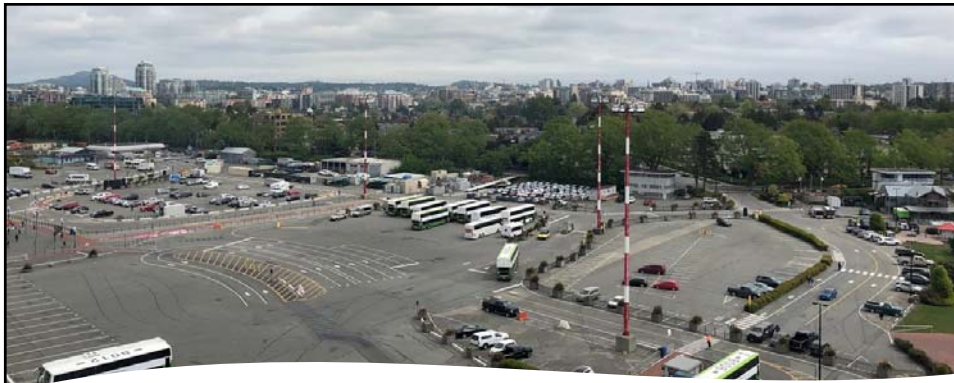
- Our bus age requirements are some of the strictest of any port of call worldwide.
- These requirements ensure that buses must meet the highest EPA (USA) standard, or 2010 for bus engine age. As of 2019, all buses on the terminal will be at this level or newer.



Sustainability - Ground Transportation



- 30% of passengers choose to walk into the downtown core.



Sustainability - Emissions Inventory

We're actively studying the benefits, restrictions, and funding opportunities around shore power capabilities at the terminal.

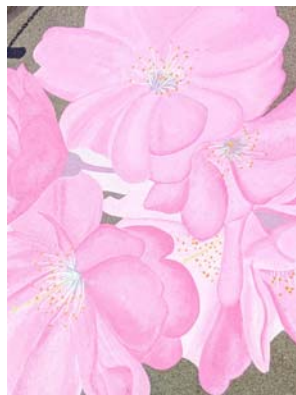
We are also working with Synergy Enterprises on a full emissions inventory of Ogden Point; the results of which will be ready by the end of July.

Cruise Lines International Association (CLIA) Emissions Commitment



- CLIA has a public commitment to reduce the rate of carbon emissions across the industry fleet by 40% by 2030.
- Industry members recently announced \$1 billion+ investment in new technologies and cleaner fuels
- Plans to build ships powered by liquefied natural gas (LNG), a cleaner source of fuel, with the first one in service in 2019
- Implementing Ship Energy Management Plans for route planning and maintenance to reduce fuel consumption and carbon emissions
- Energy efficient design standards will reduce CO2 emissions by 30% by 2025

2019 Terminal Improvements Placemaking “City of Gardens”



A new, 240' long mural to connect visitors from Pier B to our new pedestrian walkway.

Designed and created by local artist Renee Audy.

Targeted completion for November 2019.



2019 Terminal Improvements: A New Visual Identity



Continued Repair & Replacement Challenges

- Inner Harbour Causeway
 - Expected replacement cost +/- \$25 million within next 15-20 years
- Ship Point
 - Expected replacement cost +/- \$24 million within next 10+ years



Thank you.

Dave Cowen
Chair
chair@gvha.ca

Ian Robertson
CEO
ceo@gvha.ca

ghva.ca | 250-383-8300

