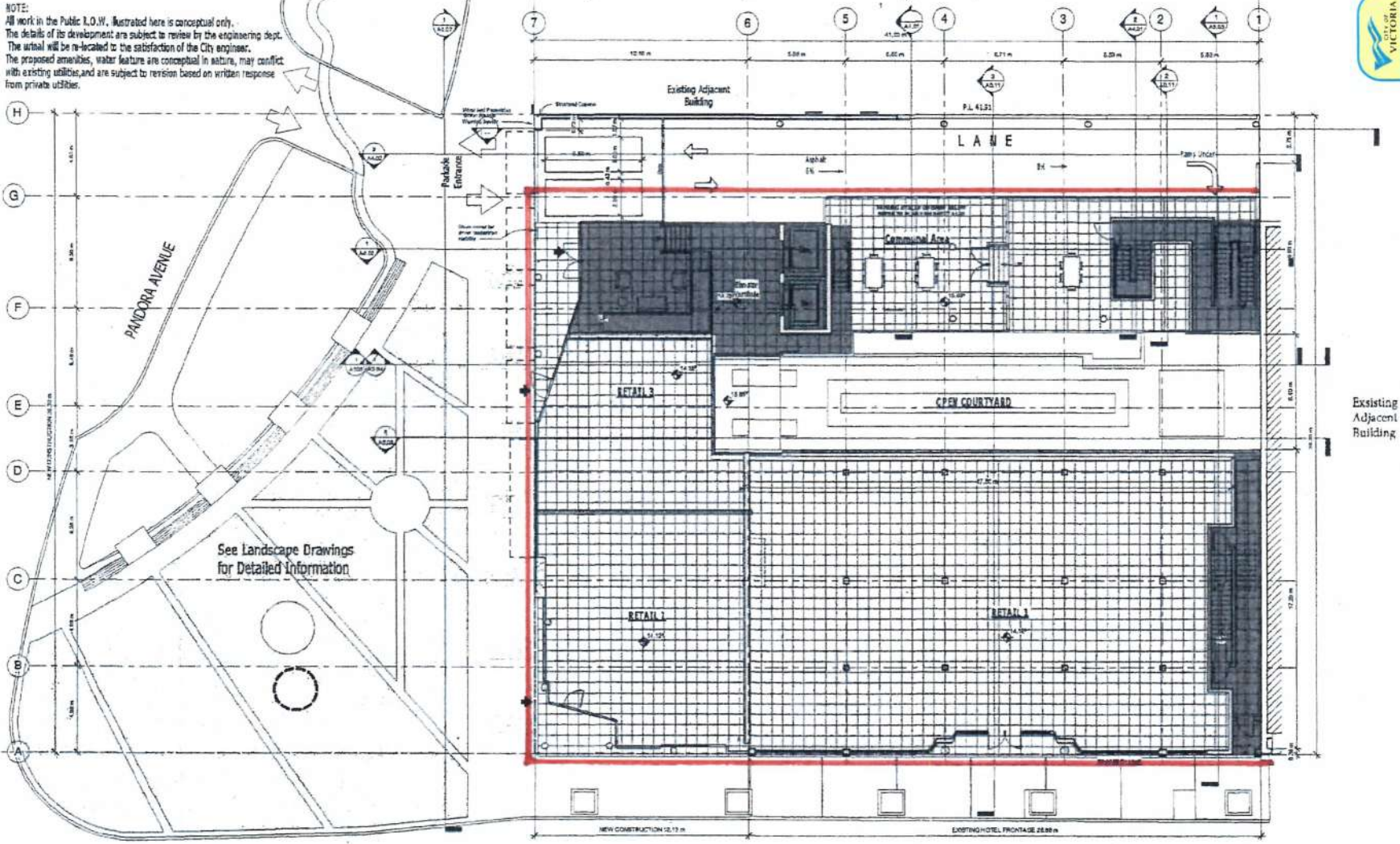


Proposed location of hording/fencing indicated with a red line.
 All existing contaminated material and walls inside fenced off area will be removed from the site in accordance with Provincial Guidelines prior to the installation of the fencing.

Original Submission
 Received Date:
 May 29, 2019



NOTE:
 All work in the Public L.O.W. illustrated here is conceptual only.
 The details of its development are subject to review by the engineering dept.
 The utility will be re-located to the satisfaction of the City engineer.
 The proposed amenities, water feature are conceptual in nature, may conflict with existing utilities, and are subject to revision based on written response from private utilities.

See Landscape Drawings for Detailed Information

the private utility services will be relocated from the public right of way and the under sidewalk basement will be filled, to the satisfaction of the Director of Engineering.