

CENTENNIAL SQUARE

DRAFT DESIGN FRAMEWORK
AND DIRECTIONS

Design Framework

The following design framework and draft vision statement synthesizes key aspirations for and design components of the square. They are based on the opportunities, big ideas and desired experiences identified by the community. Together, these formed the basis for exploration of design concepts and options at the Ideas Jam.

CONNECTIVITY: Enhance entryways and connections through the plaza to connect seamlessly with the surrounding street and open space network.

UNDERCROFT: Animate the undercroft to support daily and special activities and make it feel safer and more welcoming.

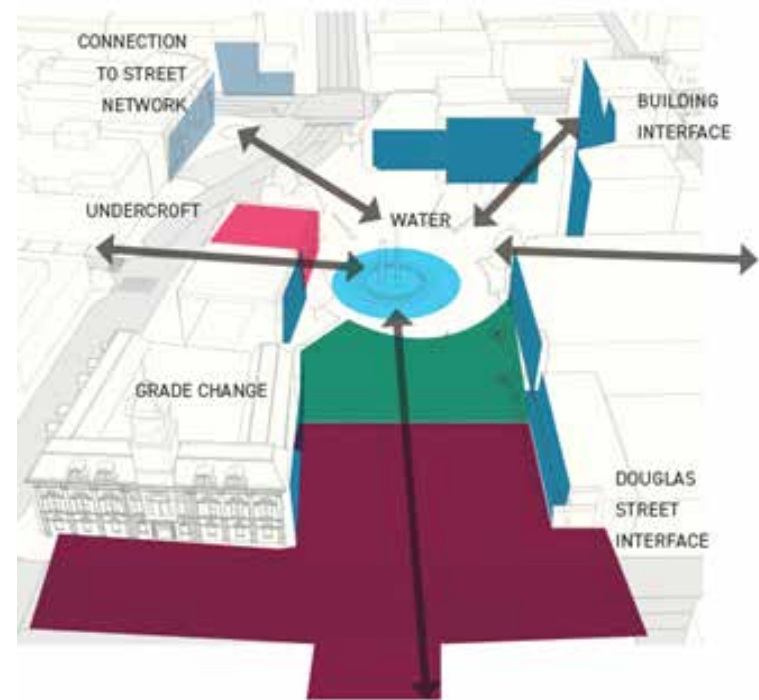
WATER: Embrace water as a formal design element, focal point and play feature for the square

GRADE CHANGE: Incorporate places to sit and relax and green space within universally accessible terraced landscape

BUILDING INTERFACE: Create more active, attractive and animated building edges

DOUGLAS STREET INTERFACE: Open up the square to embrace Douglas Street.

DRAFT VISION STATEMENT: An inclusive, welcoming and healthy place for public life, celebration and collective joy.



Experiences

Based on the site assessment and early engagement with the stakeholder working group, a set of 6 key themes were identified to structure key opportunities for the Square.

These were used to engage the public on the types of experiences they would like to have in the square. An on-line survey and series of pop-up public engagement events resulted in nearly 1500 individual responses showing experience preferences and priorities. These are summarized below in hierarchy of themes based on the feedback received:

- active year round
- celebration
- destination
- urban oasis
- civic heart
- urban play

Experience

playful seating elements and art

destination outdoor art gallery public art elements

come when it's cold and rainy

come to discover

shady tree spots grab a bite eat and relax

come for lunch

URBAN OASIS

ACTIVE YEAR ROUND

CIVIC HEART

CELEBRATION

URBAN PLAY

DESTINATION

winter markets light displays digital art covered areas

come to see local art come to socialize

community block party community gatherings

markets unique events

come for local events and food

Centennial Square

The Ideas Jam

The purpose of the Ideas jam was to generate preliminary design ideas and directions based on the design framework developed in phase 1 and public input and feedback received in the process to date.

Design ideas generated were broadly premised on restoring the original intent of the square as the City's main civic gathering space while supporting its evolution as a venue for appropriately scaled events and festivals, and creating a more fun, inclusive and welcoming space for people of all ages and abilities.

Design directions and ideas included:

- **Creating a more simplified and formal civic space with more seamless physical and visual connections**
- **Flexible and adaptable design to support a diversity of year round activities, events and programming**
- **Ensuring high quality design and materials and incorporating ample seating and appropriately located shelter for year round comfort**
- **Incorporating active edges through use and design of buildings to support vitality and eyes on the square throughout the day and year round**
- **Incorporating elements of play using water, furniture and art to create a more welcoming, fun and adaptable environment for children and families**

The preliminary design directions generated at the Ideas Jam (and feedback on them) will be used to develop a refined set of concept options and a draft preferred concept. This in turn will be presented back to the public and stakeholders for further review and input later this fall and in early 2019.



Programming

WHAT WE'VE HEARD

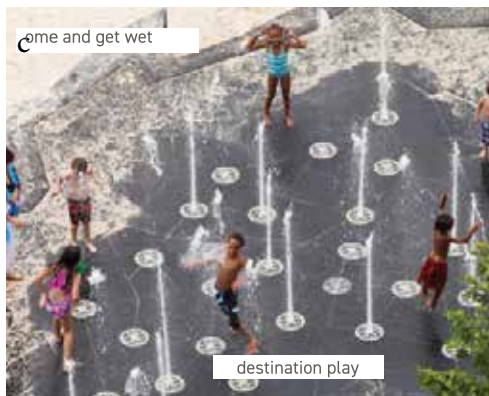
- These images and words were chosen by the community to represent the types of experiences and activities that they felt should be supported and prioritized in the square.



come for lunch
shady tree spots
grab a bite
eat and relax



come when it's cold and rainy
winter markets
light displays
digital art
covered areas



come and get wet
destination play



come to discover
playful seating
elements and art



come to see local art
destination outdoor
art gallery
public art elements

Design ideas generated and illustrated on the following pages were based on these preferred experiences, and premised on:

- Supporting a range of events and festivals that are publicly oriented and at a scale appropriate to the square.
- creating a more simplified and formal civic space with seamless physical and visual connections
- enable flexible and adaptable use of the square and support a range of events, festivals and other programming opportunities.



come to socialize
community block party
community gatherings



come for local events and food
markets
unique events

Direction 1

MORE OPEN URBAN DOUGLAS ST. PLAZA

- we heard a desire to create a more welcoming and open relationship to Douglas Street with a strong sense of arrival

IDEA 1

elements:

- hard surface plaza
- shade trees
- pavilion at Douglas St.
- public art + water

provides:

- festival and event space
- visual connection
- gateway

good for:

- safe and inclusive/ more welcoming
- flexible programming markets and small events
- better sight lines



DOUGLAS STREET

DOUGLAS STREET



Direction 1

MORE OPEN URBAN DOUGLAS ST PLAZA

- we heard that safety, visibility and openness is important

IDEA 2

elements:

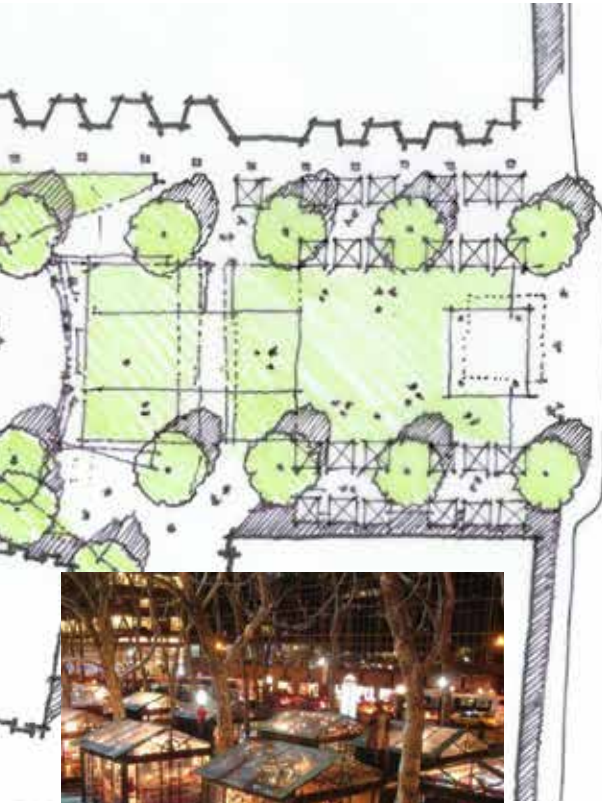
- open lawn area
- shade trees
- pavilion at Douglas St.
- water element

provides:

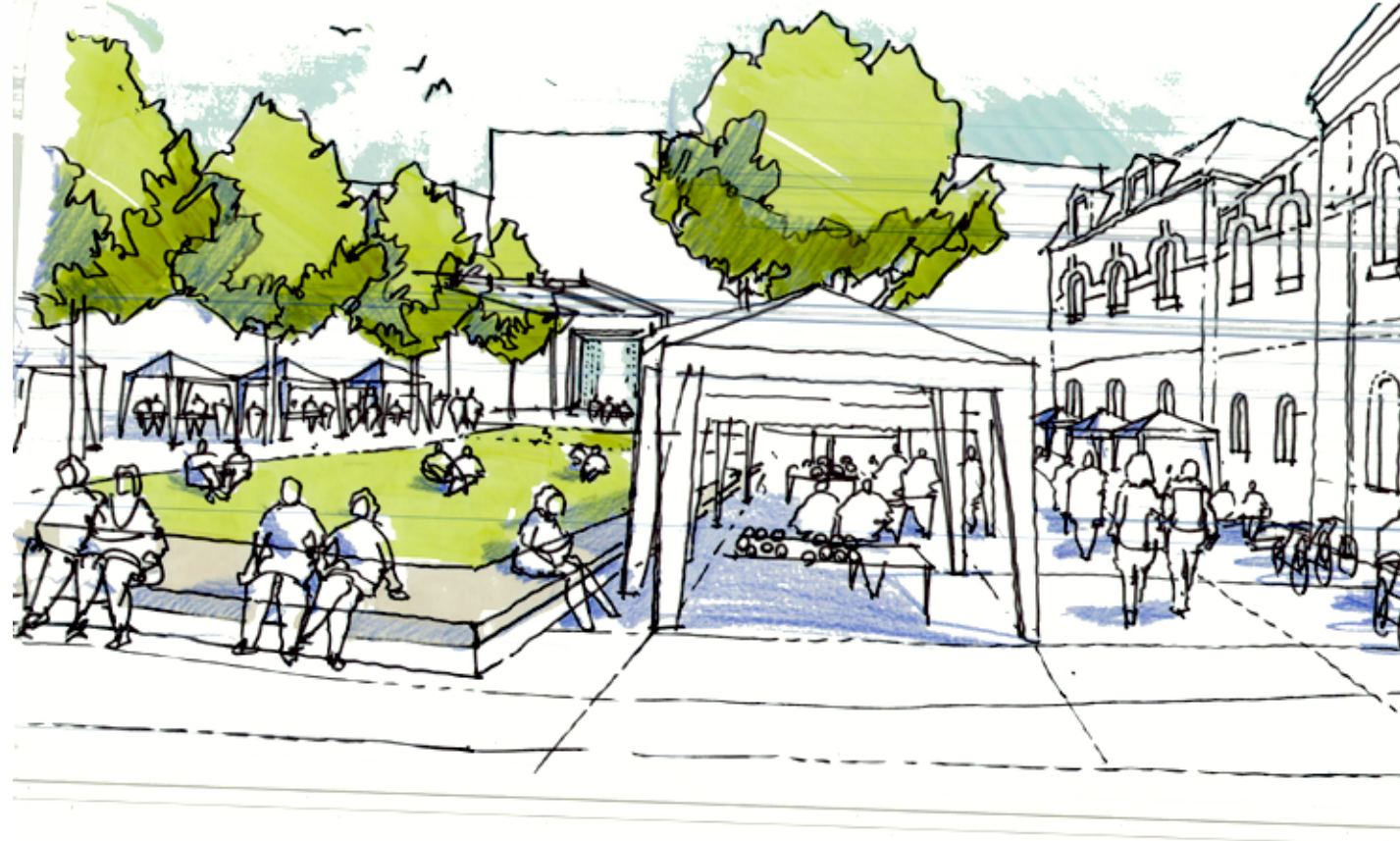
- festival lawn and event space
- visual connection
- gateway

good for:

- celebration, markets, urban oasis
- welcoming, open and safe
- more ground level uses



DOUGLAS STREET



Direction 2 INTEGRATED AND ACCESSIBLE GRADES

- we heard that better connections and easier movement for all is important and in need of improvement

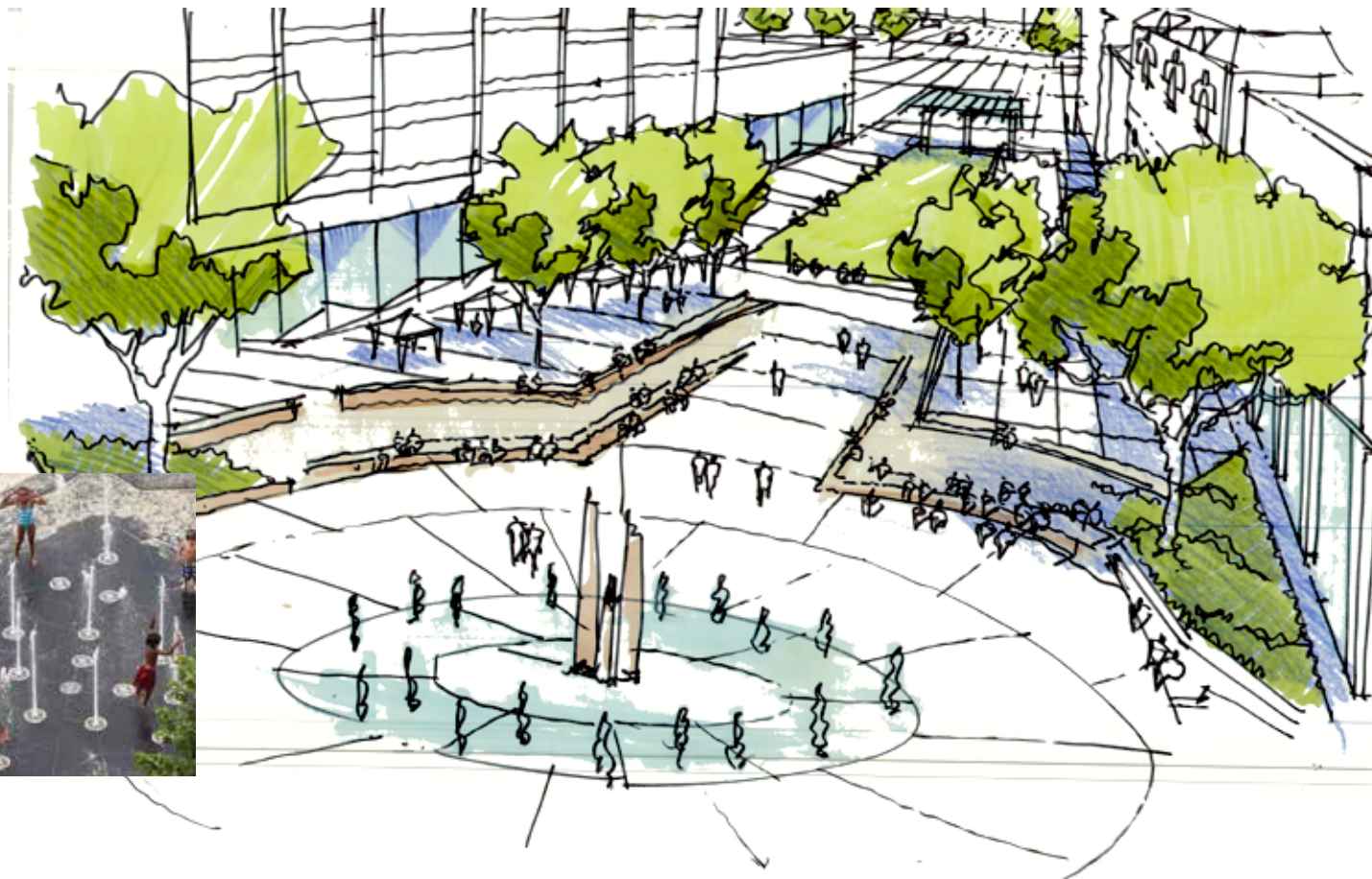
IDEA 3

elements:

- sloped landscape/ plaza
- seating edges/ steps
- simplified, continuous grades
- works with hardscaped or lawn Douglas plaza

provides:

- seamless visual and physical connections
- universally accessible grade change
- event space
- play opportunities
- more inviting places to sit



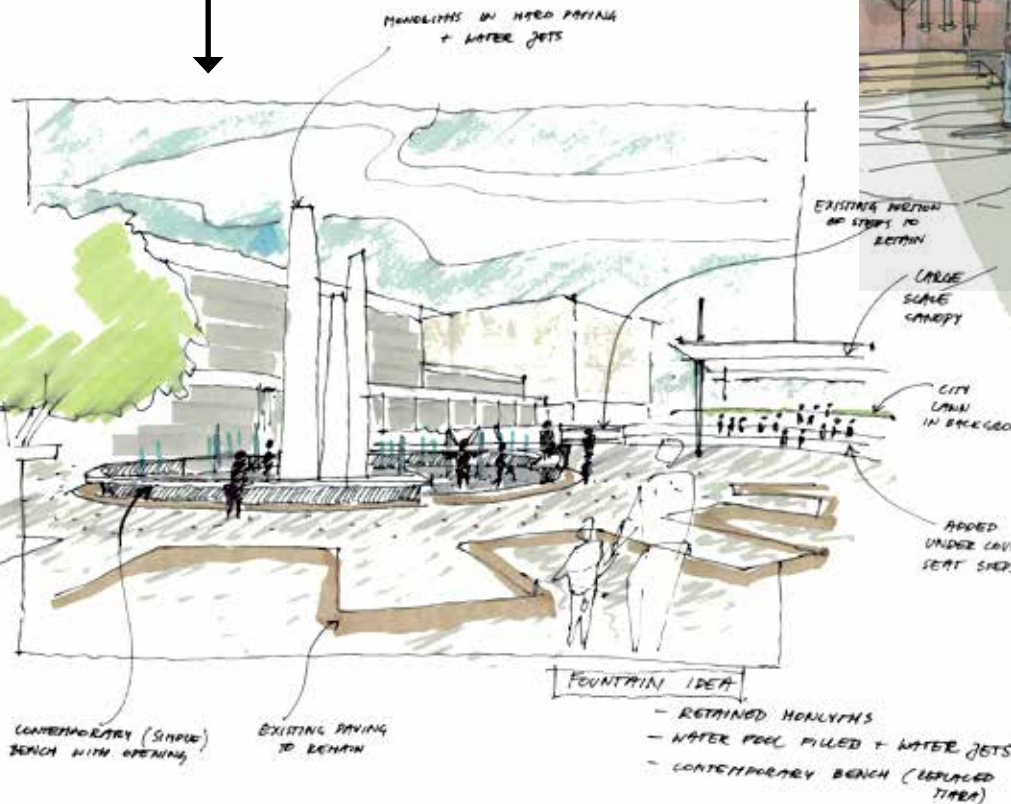
Direction 3

REFRESHED FOUNTAIN AND CENTRAL PLAZA

- we heard a desire for a more and open and flexible space integrating water play while preserving elements that have heritage value and meaning

IDEA 4

- contemporary seating adapting and using the tiara (with breaks that allow for walking through)
- pool replaced with water jets
- preserves original layout
- provides urban play
- improves connectivity

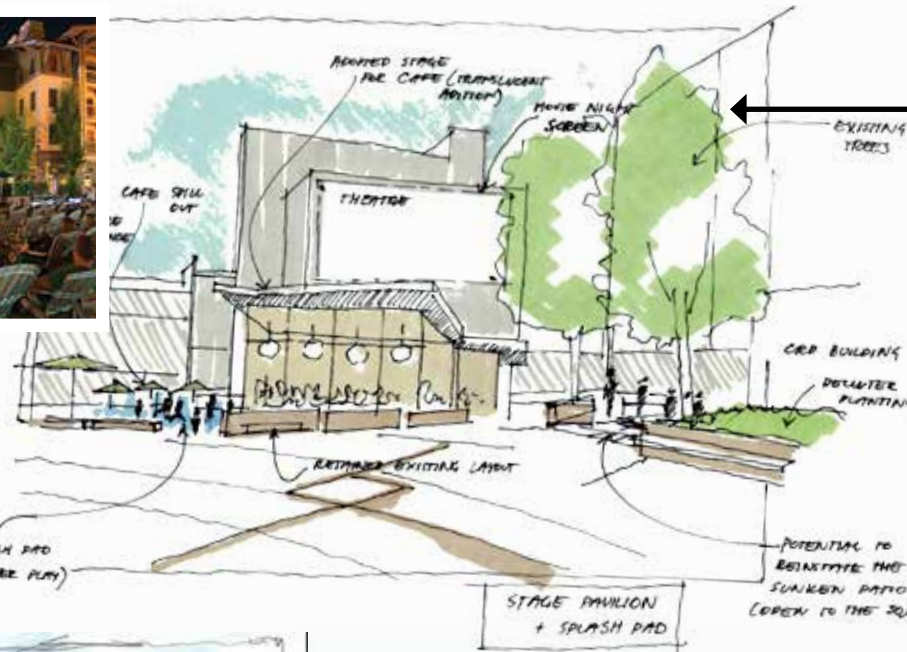


IDEA 5

- totemic monoliths retained and restored
- paved ground plane with water jets that can be turned on and off, with permanent water jets adjacent to monoliths
- provides more flexible open space
- allows urban play
- improves connectivity
- attracts people of all ages

Direction 4 ACTIVE EDGES

- we've heard that active 'sticky' building edges with retail and activity spilling out into the square would be great



IDEA 6

sticky edge 1

- stage area adapted for pavilion and enclosed active use

IDEA 8

sticky edge 3

- active uses in existing / or redeveloped building at north Douglas plaza

IDEA 7

sticky edge 2

- undercroft area adapted for inclosed or semi enclosed pavilion and active use



Direction 5

ACTIVATED UNDERCROFT

- we've heard that the undercroft is a great opportunity for activation and programming to create a more welcoming entry from Broad Street.

IDEA 9

Civic Room

- Partially enclose undercroft (west side)
- activated west and north edge with seating and spill out
- programmable flexible uses
- improved safety
- improved ground level activity
- community oriented uses



Open-air Gallery

- An option to leave the undercroft open and program as an open air gallery for multi-media and interactive installations



IDEA 10

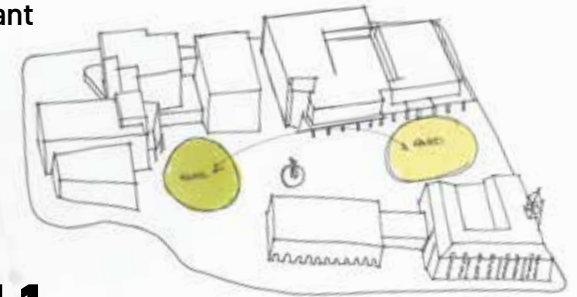
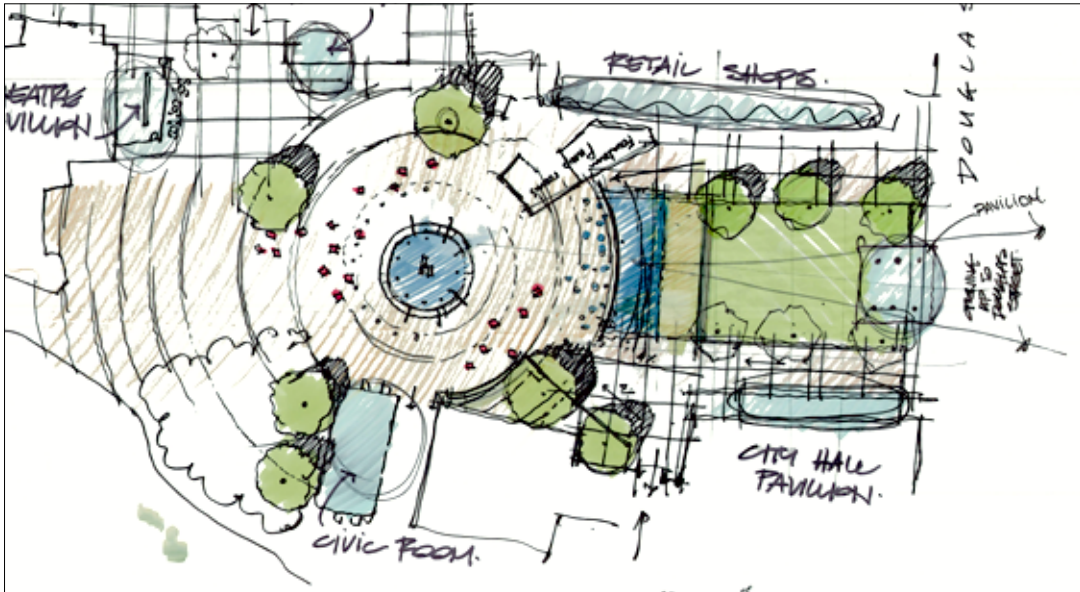
Public Art Gallery

- A greater portion of undercroft enclosed
- activated edges day and night with art displays, lit and visible at all times
- rotating layout and exhibition
- improved safety
- improved ground level activity
- destination, support arts and culture

Direction 6

INVITING URBAN GREEN

- we heard that both a green (lush trees/lawn) and safe space to relax and socialize in the square is important



IDEA 11

Urban Green East

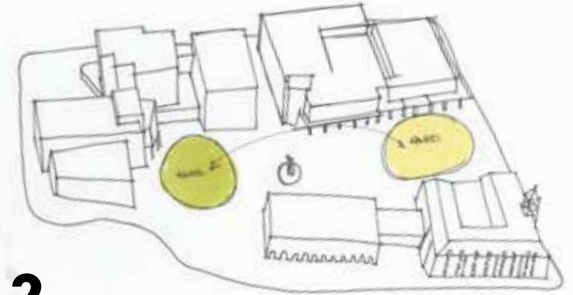
- Community lawn at Douglas Street
- open lawn with deciduous trees for framing
- shelter/ canopy or pavilion at Douglas St.
- potential for incorporation of water feature
- improved connectivity
- improved sitelines
- sense of gateway
- 'green' interface with Douglas



Direction 6

INVITING URBAN GREEN

- we've heard that a place to sit in the shade and enjoy lunch or host a farmers market is desired



IDEA 12

Urban Green West

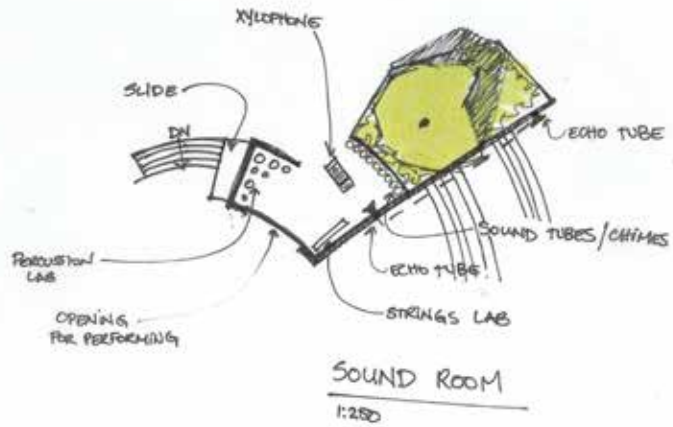
- hardscape plaza at Douglas
- retained fountain and monoliths
- lawn and treed area adjacent to the theatre (stage removed/reconfigured)
- improved safety
- larger, better open space for markets
- visual transparency



Other ideas

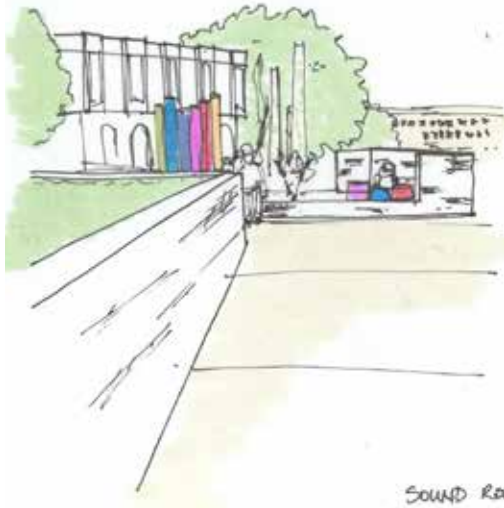
DESIGN EXPLORATIONS

> LIBRARY



The new Cantorville Square.

The mosaic Monoliths as the iconic landmark.

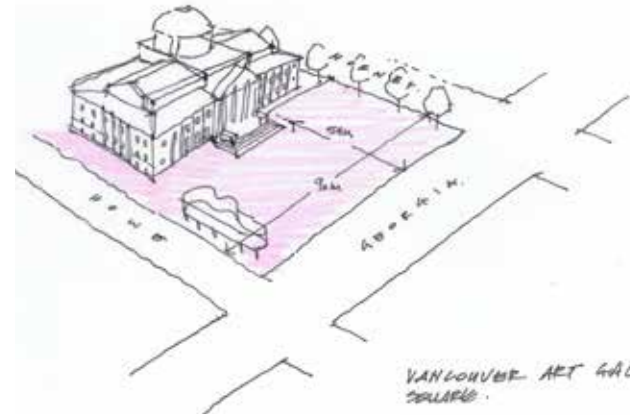
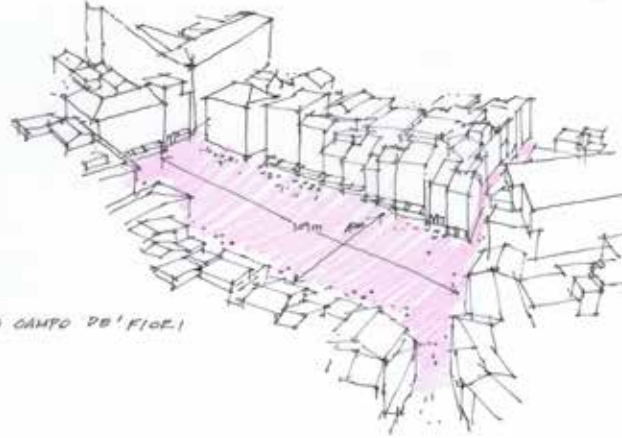
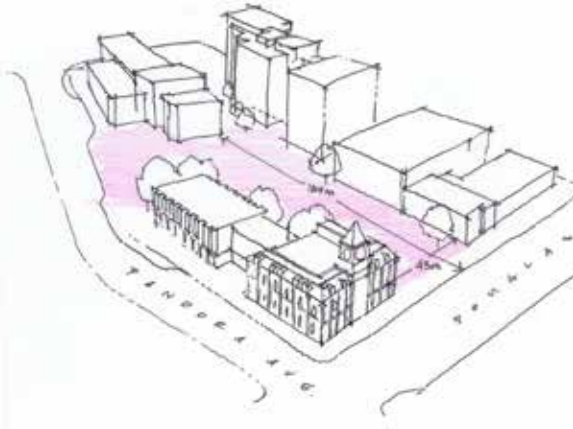


SOUND ROOM



Analysis

DESIGN STUDIES



- CONNECTIONS OFF-SITE
- VIEWS & ACCESS.

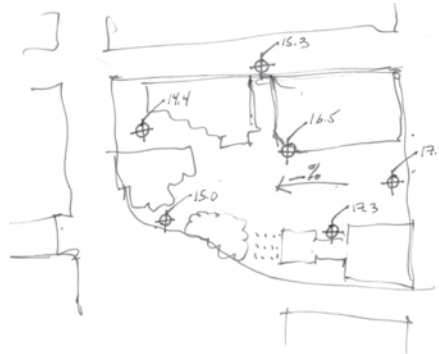
C² AS POSITIVE SPACE

- INTERACTIVE ELEMENTS
- LIGHTING
- WATER
- SOUND

- DEFINITION
- EDGES & ENGAGEMENT W/ ADJACENT ACTIVITY
- DONGLAS
- TRANSIT RIDERS.



ARCADES



People's activities attract people, that attract activity.

