

CENTENNIAL SQUARE

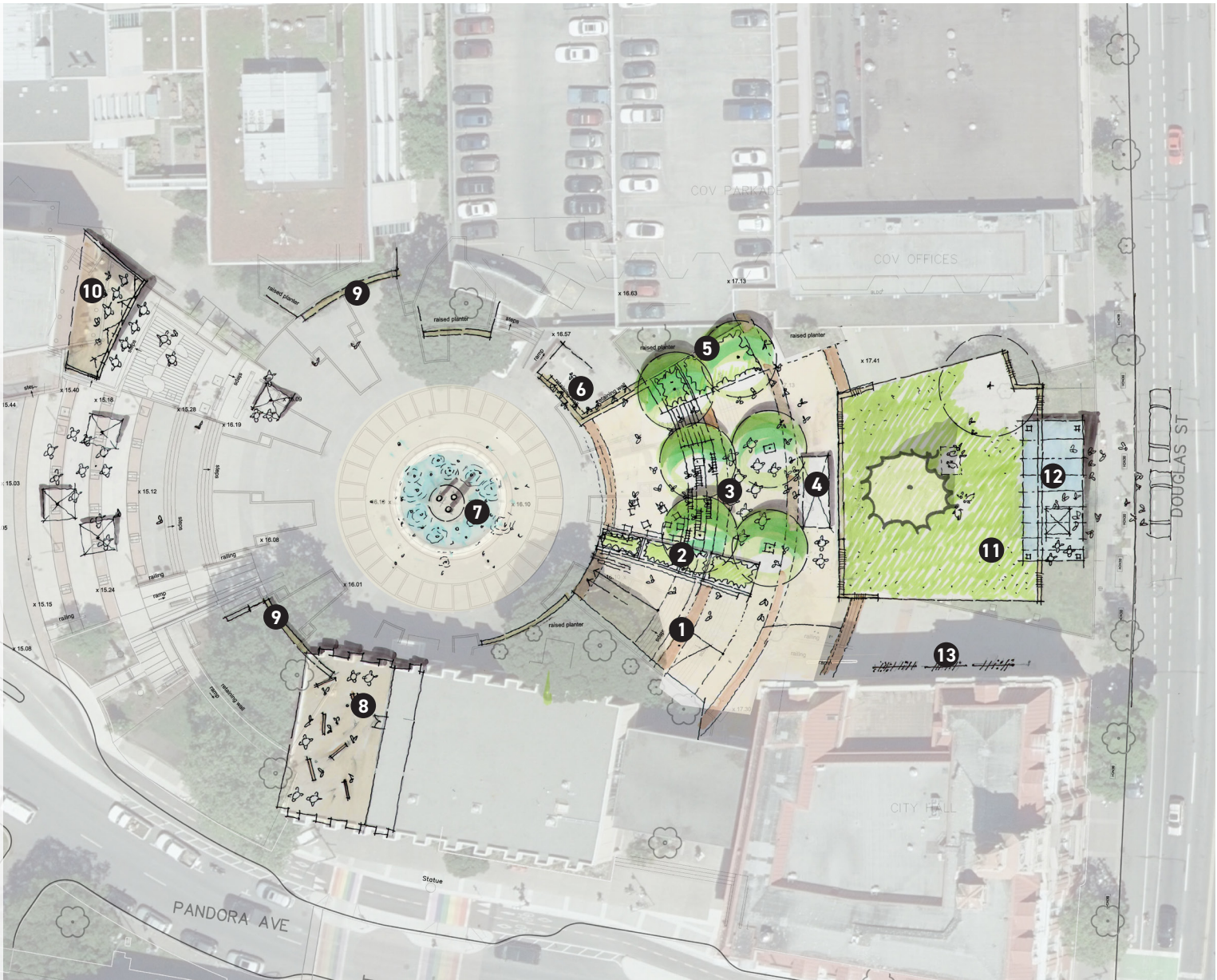
Plaza refresh - Draft concept
June 2019

page left blank intentionally

CENTENNIAL SQUARE - PLAZA REFRESH | DRAFT DESIGN CONCEPT

LEGEND

1. Accessible grade change
2. Planting/ water feature
3. Play, rest and shade zone with seating steps, trees and informal play/ water play
4. Commercial unit/ kiosk
5. Additional lawn area with trees for shade
6. Small performance space for basking with - opened platform with seating steps
7. Splash park/ open plaza space with monoliths as center piece
8. Outdoor art galery/ workshop
9. Seating along edges
10. Commercial unit - inclosed stage space.
11. Open lawn are with clear views in and out of the Square
12. Transit centre with large canopy
13. Bike parking along city hall



DRAFT DESIGN CONCEPT

The site design is premised on improving mobility, access and safety in the Square. It focuses on using existing infrastructure to improve the square. Key design features include:

- » *Generous sloped access from City Hall to central area to improve pedestrian connection through the square*
- » *Rest, shade and play zone in central terrace area with seating steps, area for movable furniture, in ground trees and playable seating with potential for water feature and play installations*
- » *Active edges - introduction of 3 commercial kiosk opportunities: at the upper terrace, enclosed stage area and undercroft.*
- » *Central water feature / splash park with preservation of a monoliths' as a focal element and centrepiece*
- » *Addition of seating with adaptation of existing walls*
- » *Open Lawn at upper terrace*
- » *Transit Hub - Large canopy at Douglas Street that accommodates weather protection, bus wait zone and extensive bike parking with potential for additional commercial kiosk*



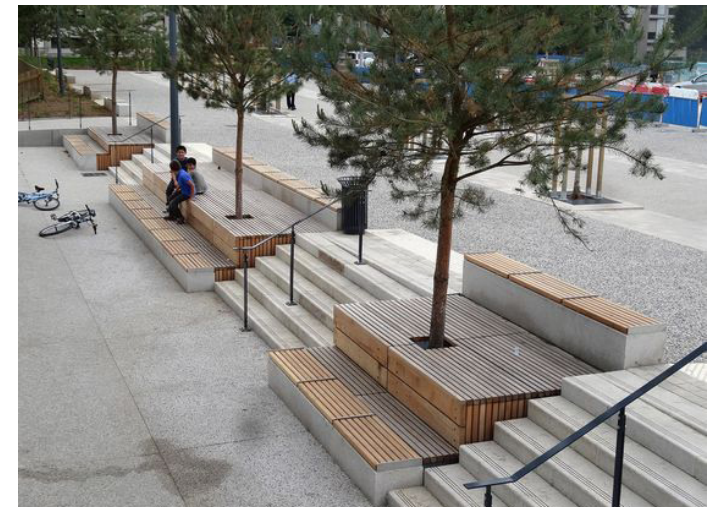
Objectives achieved by this design directly correspond to the key issues and considerations collected throughout this process. Key objectives include:

- » *Improved accessibility for all*
- » *Improved visibility to and from Douglas Street*
- » *Improved safety with activation at different times of the day and in different areas*
- » *More urban play*
- » *Urban Forest - more and healthier trees*
- » *More usable open green space*
- » *Improved flexibility for events and festivals*
- » *Better public life*

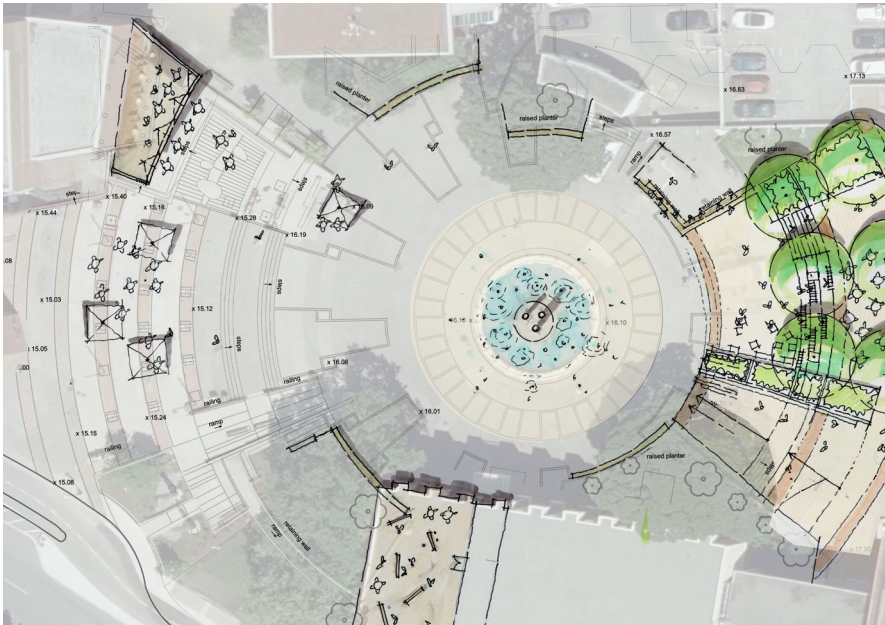


DRAFT DESIGN CONCEPT - PHASE 1

Phase 1 includes central steps and upper terrace area and would be partially implemented as part of scheduled and already funded operations and maintenance work, including incorporation of accessible ramp, tree replacement, grading, drainage and surface improvements.



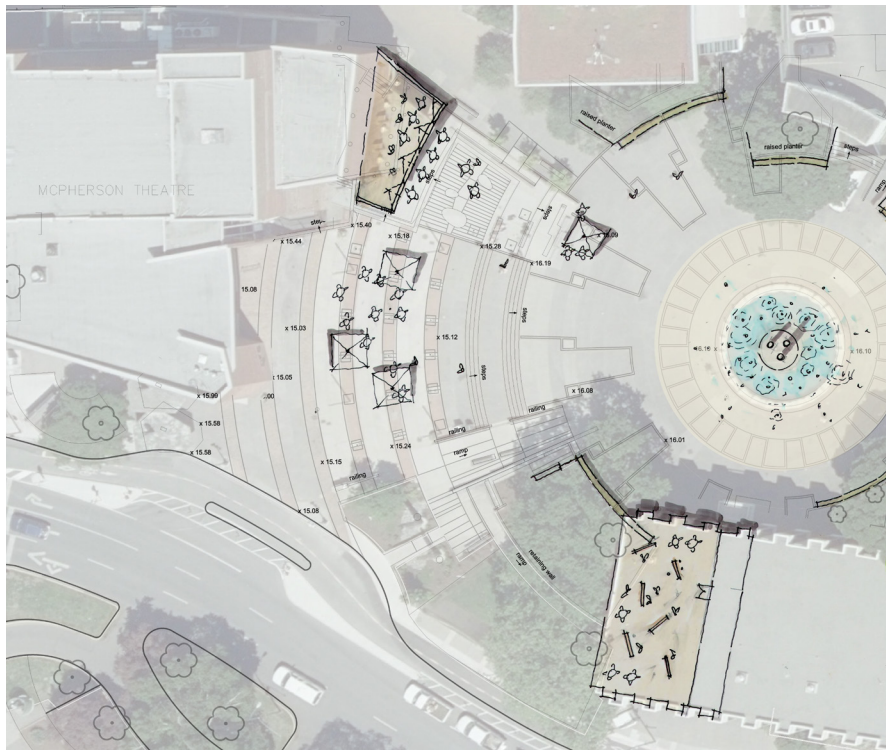
DRAFT DESIGN CONCEPT - PHASE 2



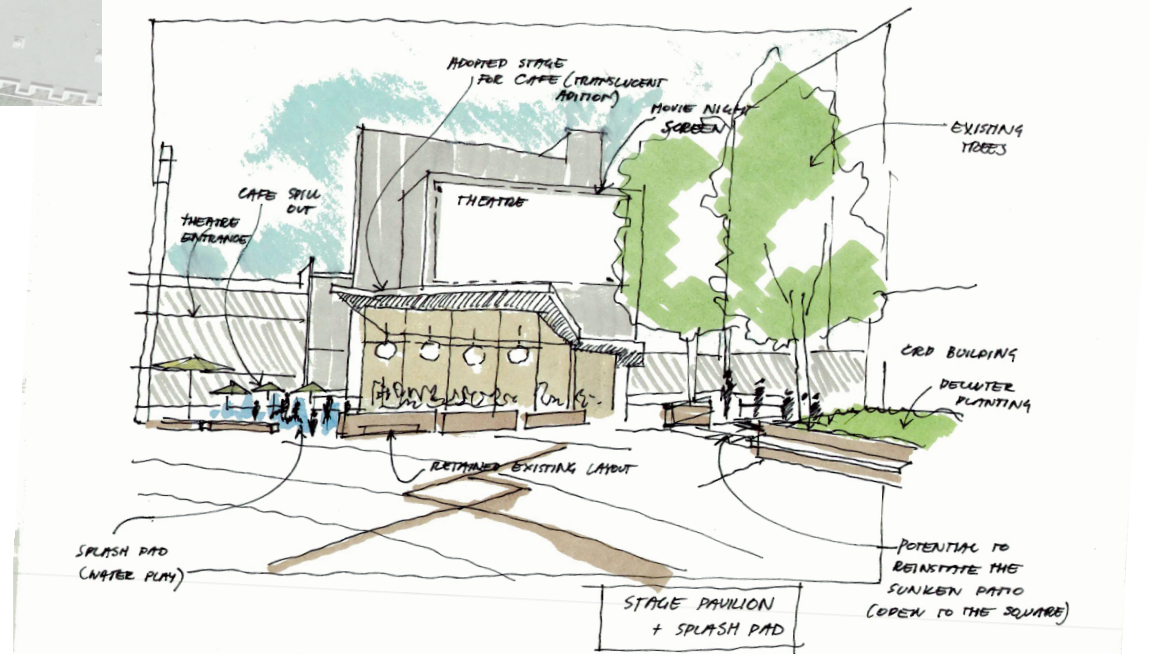
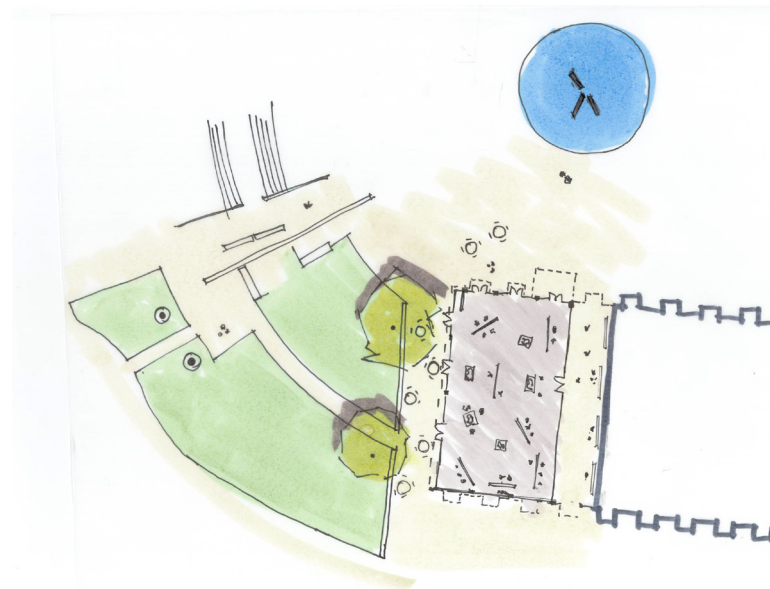
Phase 2 includes central plaza zone with water feature, paving and seating upgrades. It would be partially implemented under operations and maintenance program due to aging infrastructure of the fountain.



DRAFT DESIGN CONCEPT - PHASE 3



Phase 3 includes enclosure of two key areas and adaptation for commercial use. This can be achieved in number of ways including a short term pilot pop ups and food trucks to a fully engineered architectural updates. Feasibility study will be necessary to determine the best approach and asses costing.



DRAFT DESIGN CONCEPT - PHASE 4



Phase 4 includes upper terrace area by Douglas Street with revised lawn area extended, sequoia tree removal and new transit hub station/ canopy and bike parking.

