

PLAN SHOWING PROPOSED AIR SPACE PARCELS
PANDORA AVENUE, VICTORIA B.C.

LEGAL DESCRIPTION:
Lot A, Suburban Lot 15, Victoria City, Plan EPP61985

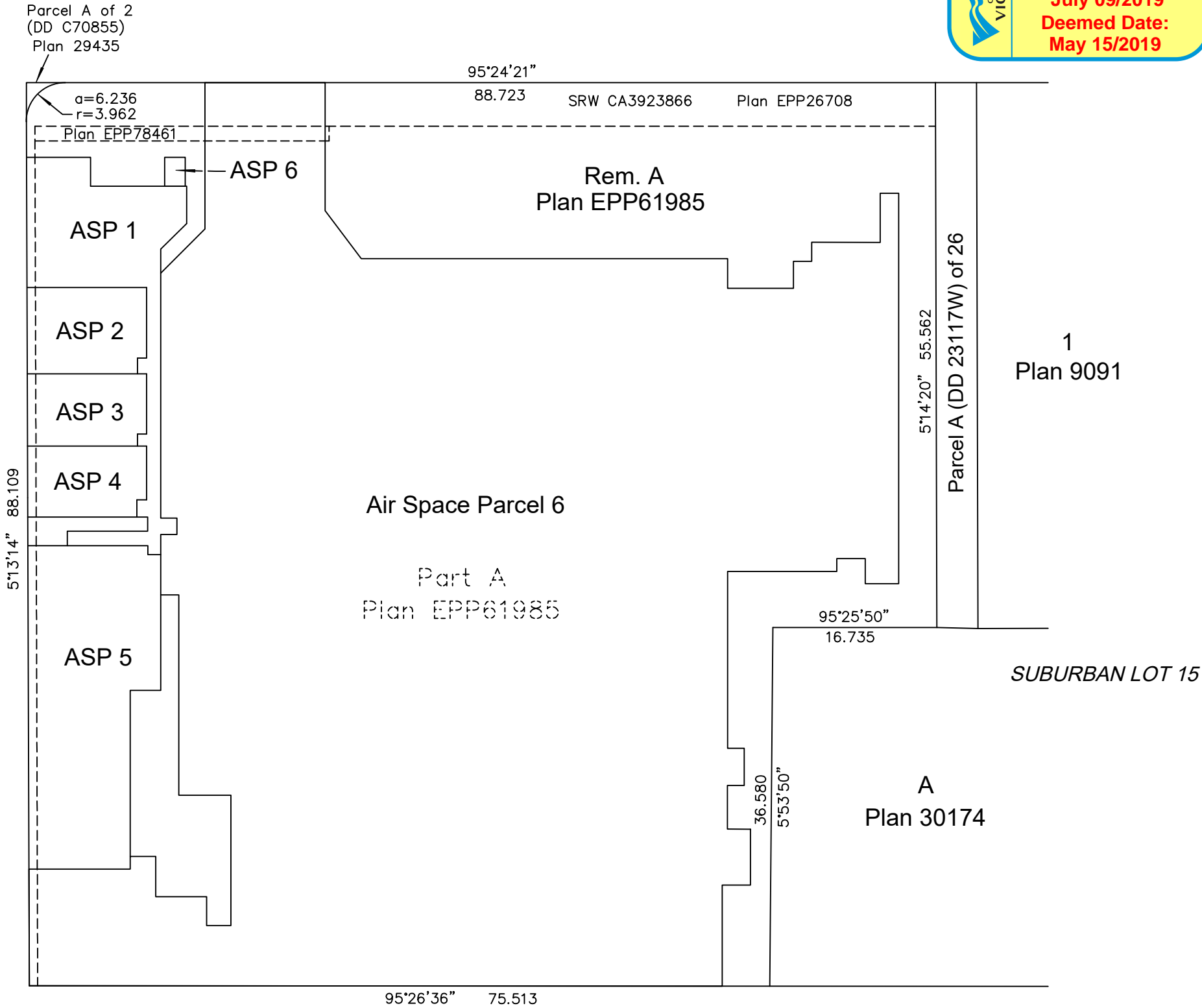
0 5 10 20 30 40 50
The intended plot size of this plan is 432mm in width by 280mm in height, B size, when plotted at a scale of 1:500.

Dimensions and Elevations are in metres.
Property line dimensions are derived from Plan EPP61985.
Proposed air space parcel boundaries from developer's usage criteria and architectural design drawings are subject to revision.
This plan is to be confirmed and read with current architectural design drawings. Individual sheets of this plan are referenced to architectural design drawings.

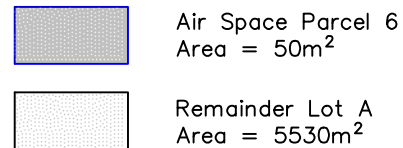


Name of Development:
Pandora

Street
Vancouver



Pandora Avenue

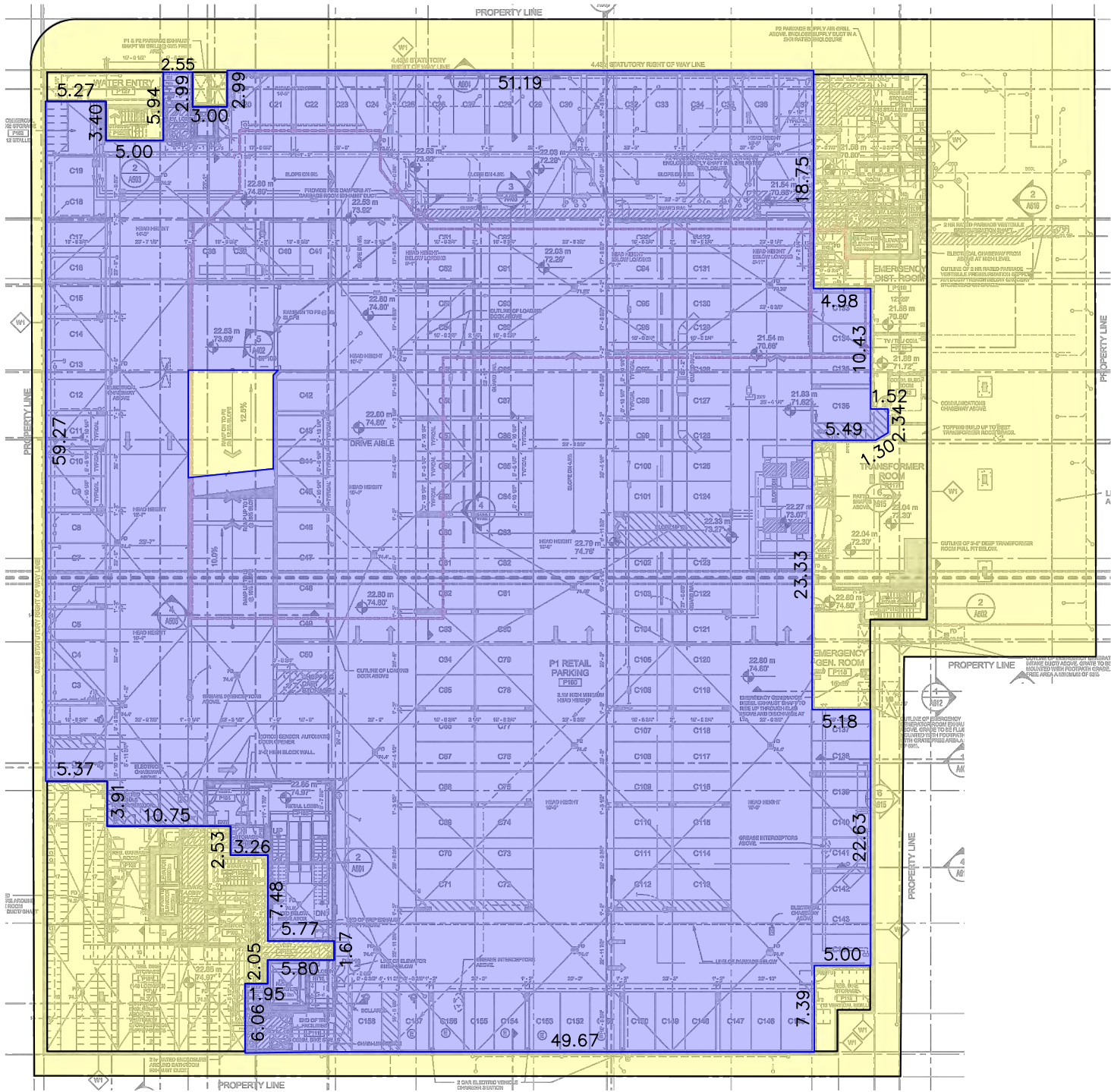


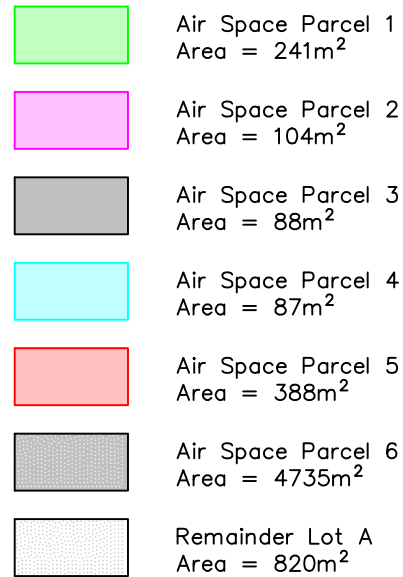
PARKING LEVEL P1

0 5 10 20 30 40 50
The intended plot size of this plan is 432mm in width by 280mm in height, B size, when plotted at a scale of 1:500.

- Air Space Parcel 6
Area = 5467m²
- Remainder Lot A
Area = 901m²

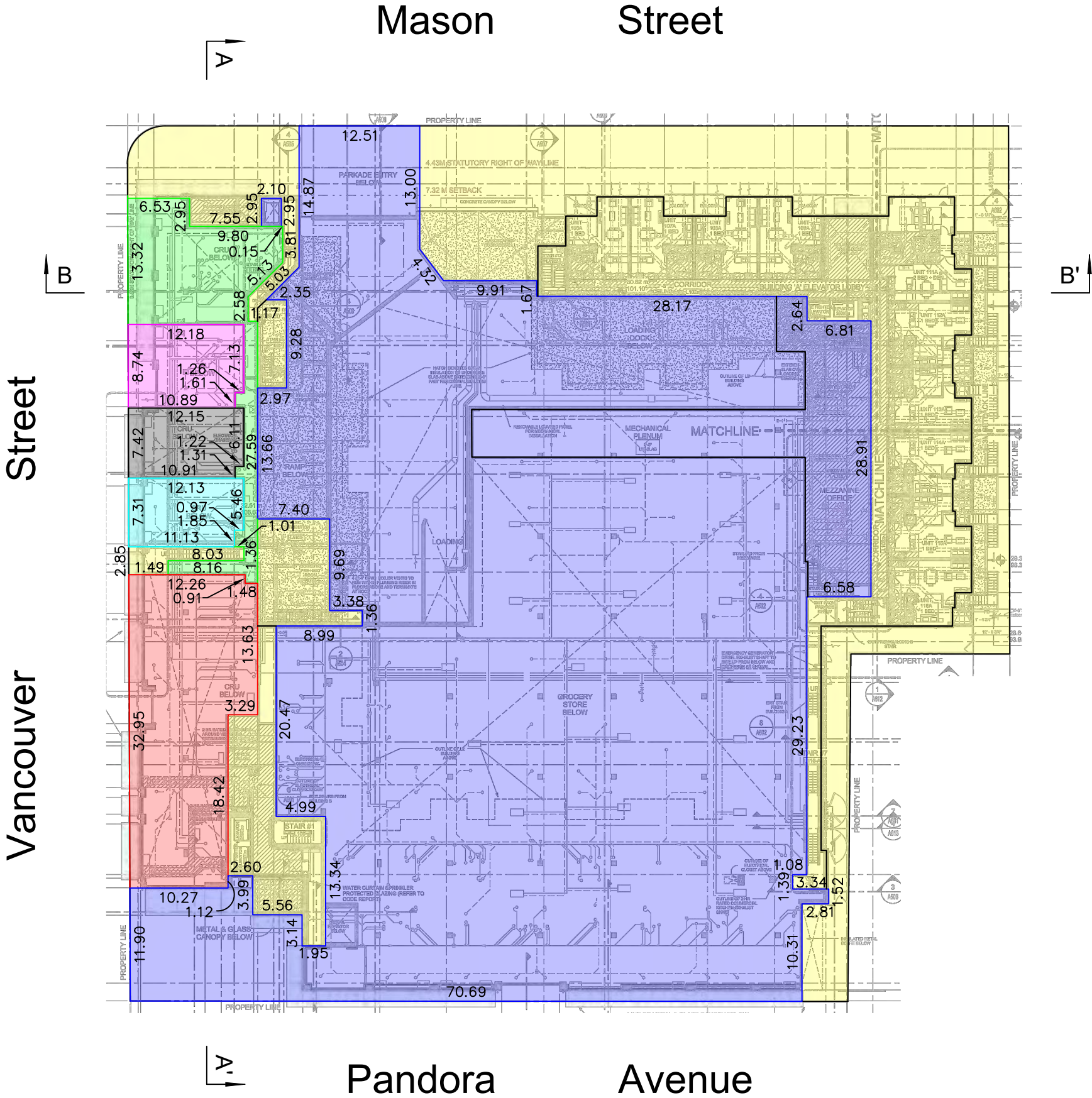
Mason Street
Vancouver Street





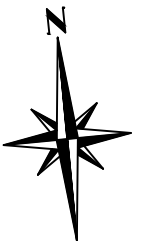
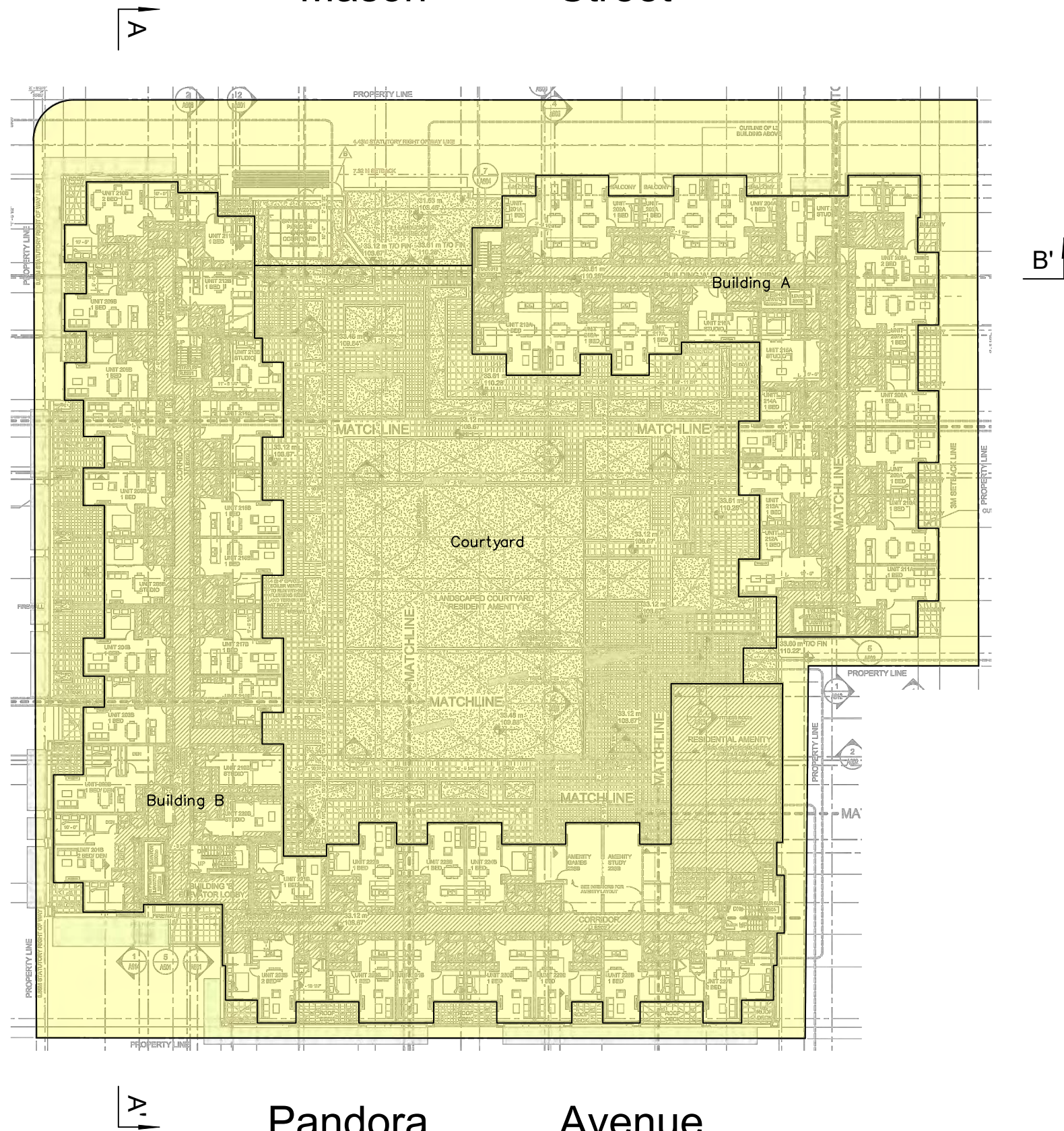
0 5 10 20 30 40 50
The intended plot size of this plan is 432mm in width by 280mm in height, B size, when plotted at a scale of 1:500.

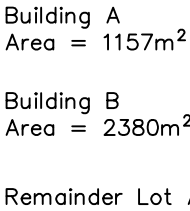
- Air Space Parcel 1
Area = 241m²
- Air Space Parcel 2
Area = 104m²
- Air Space Parcel 3
Area = 88m²
- Air Space Parcel 4
Area = 87m²
- Air Space Parcel 5
Area = 388m²
- Air Space Parcel 6
Area = 387m²
- Remainder Lot A
Area = 954m²



The intended plot size of this plan is 432mm in width by 280mm in height, B size, when plotted at a scale of 1:500.

Courtyard
Area = 2265.7m²





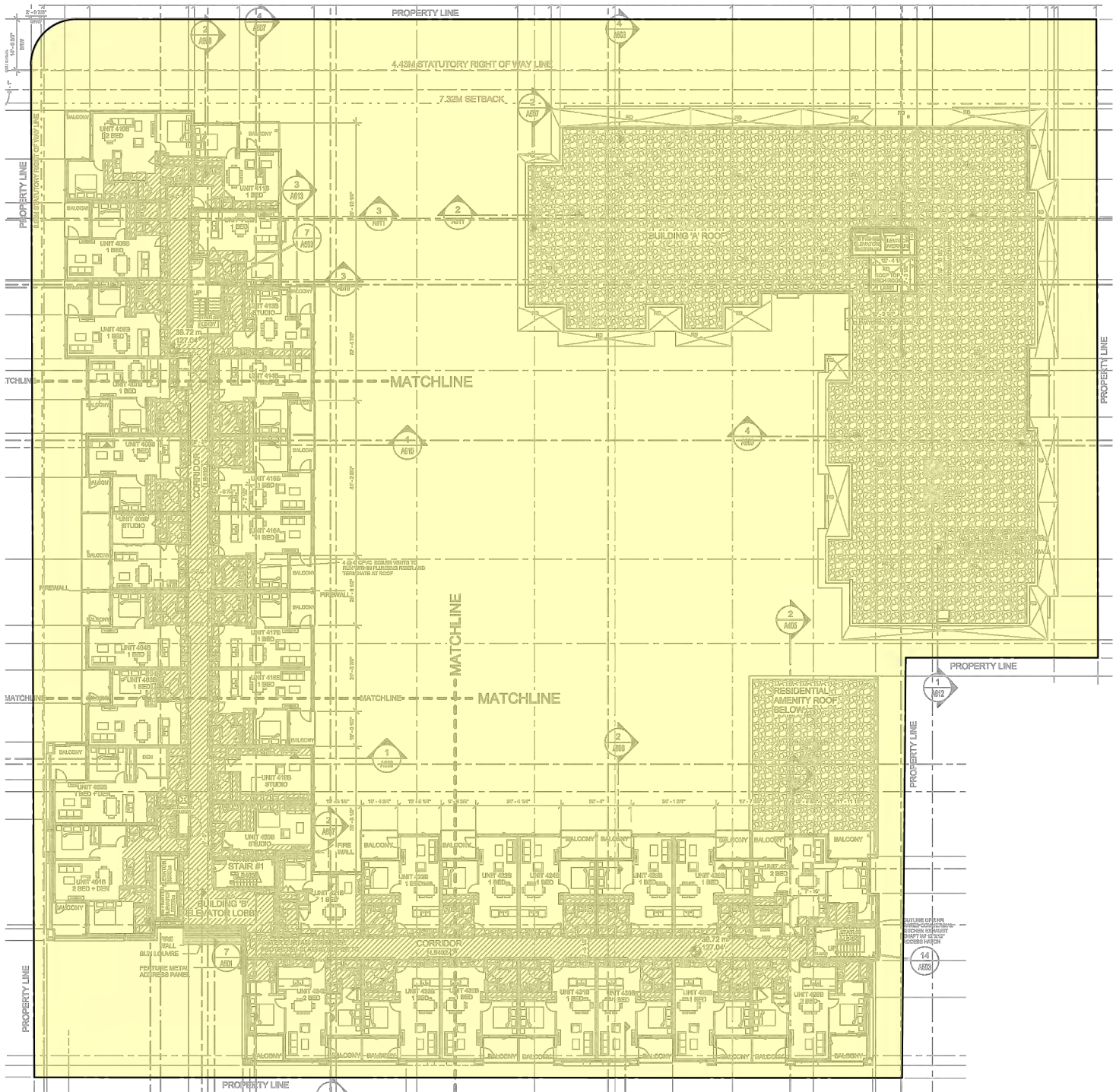
0 5 10 20 30 40 50
The intended plot size of this plan is 432mm in width by 280mm in height, B size, when plotted at a scale of 1:500.

Building B
Area = 2215m²

Remainder Lot A

Mason Street

Vancouver Street



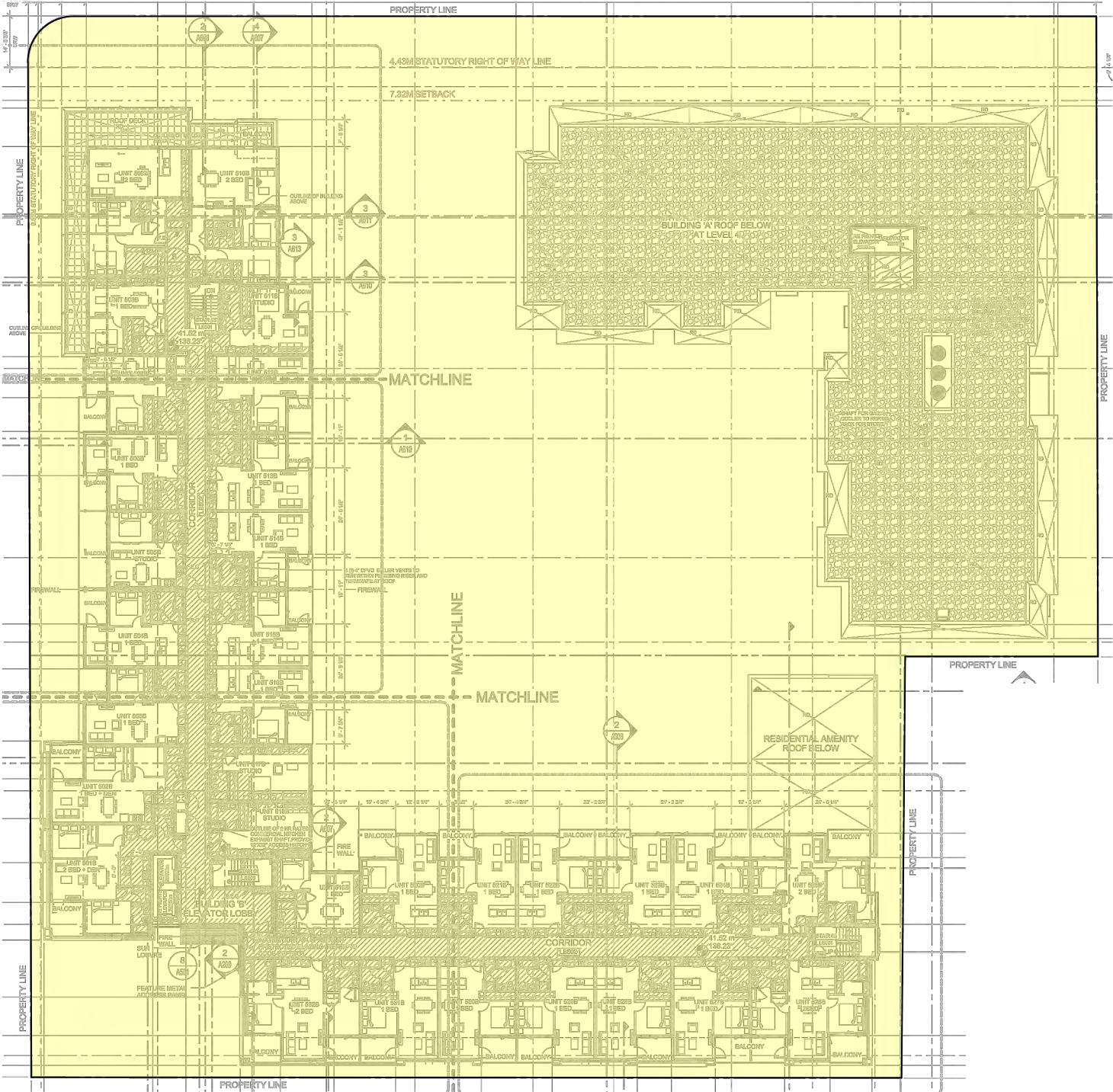
Pandora Avenue

0 5 10 20 30 40 50
The intended plot size of this plan is 432mm in width by 280mm in height, B size, when plotted at a scale of 1:500.

Building B
Area = 2152m²

Remainder Lot A

Street
Vancouver



Mason Street

Pandora Avenue



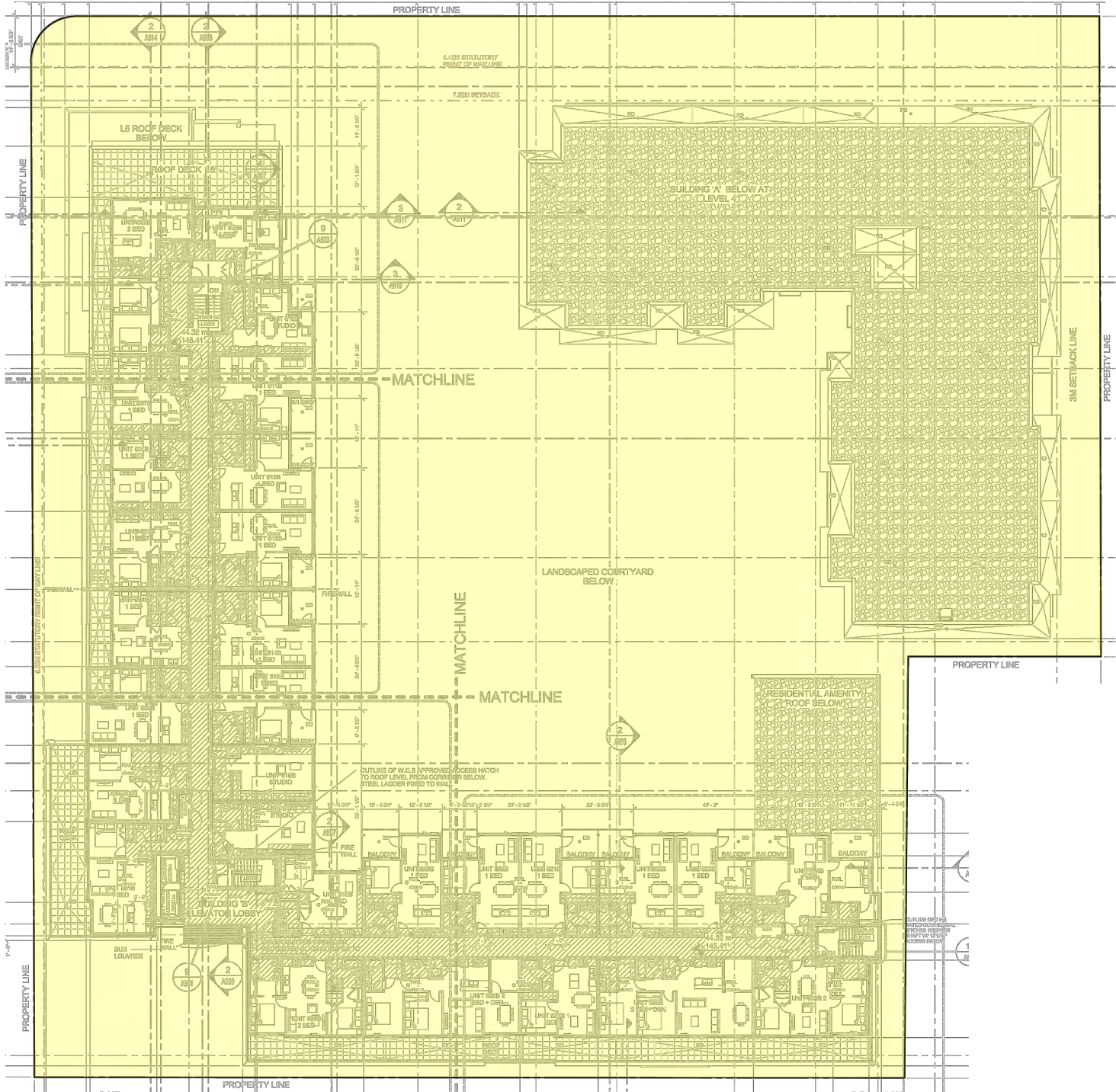
0 5 10 20 30 40 50
The intended plot size of this plan is 432mm in width by 280mm in height, B size, when plotted at a scale of 1:500.

Building B
Area = 1936m²

Remainder Lot A

Street
Vancouver

Mason Street



Pandora Avenue

SECTIONS

Rem. A
Plan EPP61985

0 4 8 16 24 32 40
The intended plot size of this plan is 432mm in width by 280mm in height, B size, when plotted at a scale of 1:400.

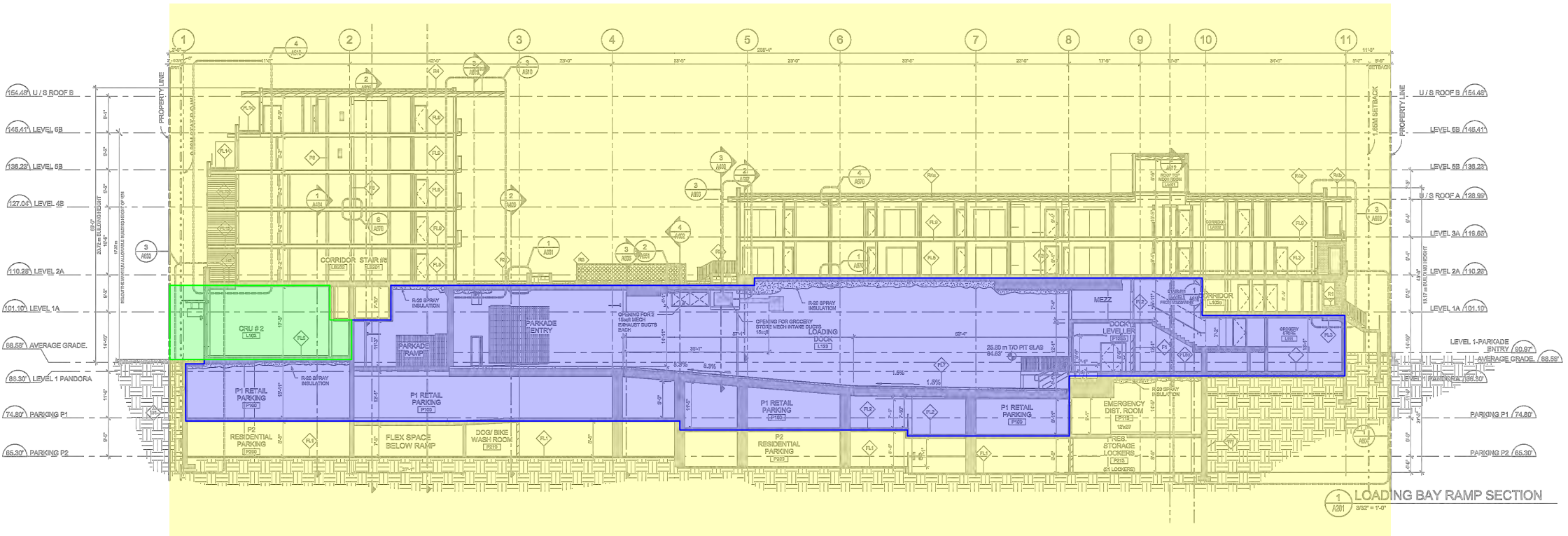
SECTION A - A'

- Air Space Parcel 1
- Air Space Parcel 2
- Air Space Parcel 3
- Air Space Parcel 4
- Air Space Parcel 5
- Air Space Parcel 6
- Remainder Lot A



Rem. A
Plan EPP61985

SECTION B - B'



Rem. A
Plan EPP61985