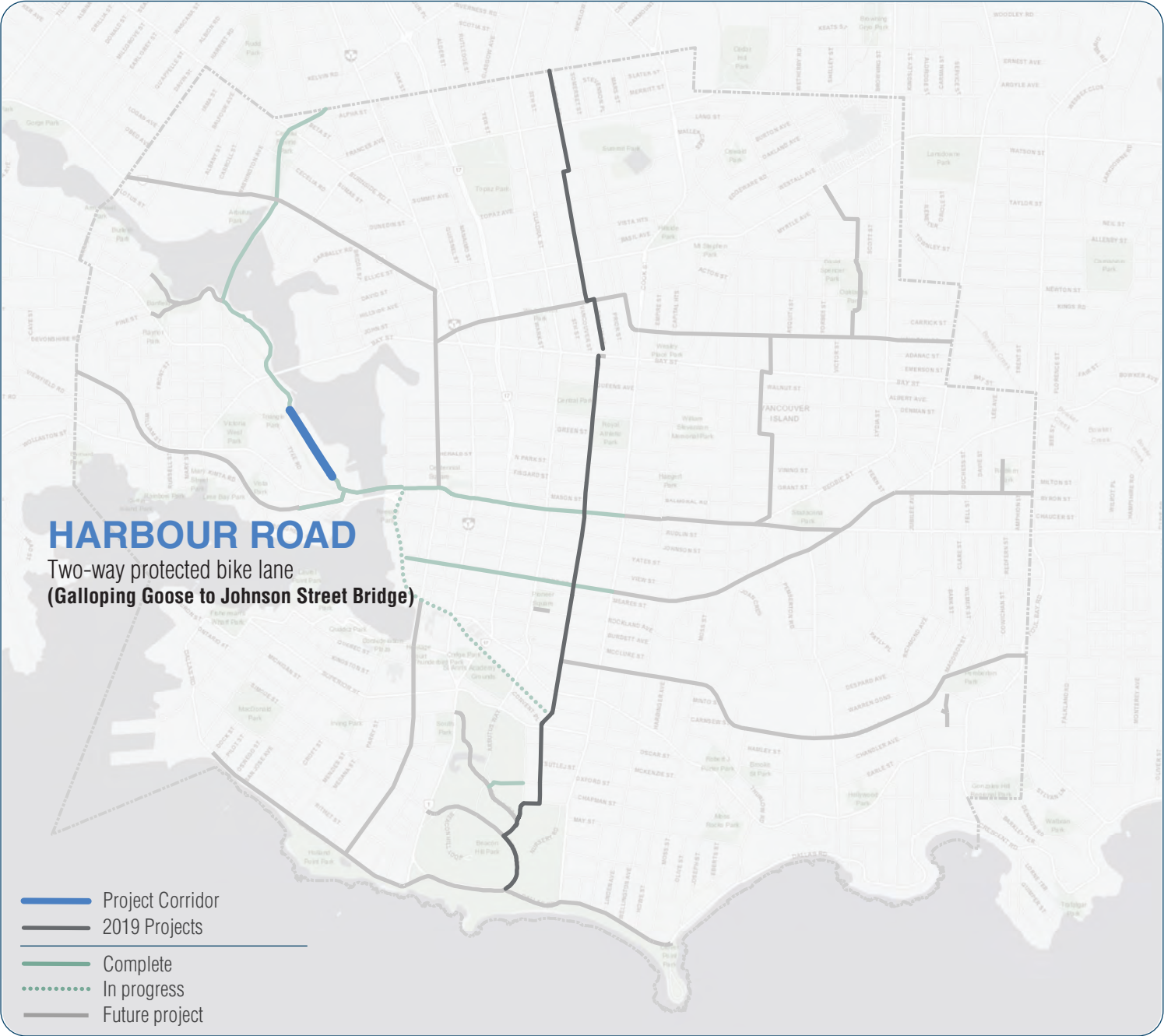


APPENDIX B - AAA Design Overview

Recommended Design for Harbour Road

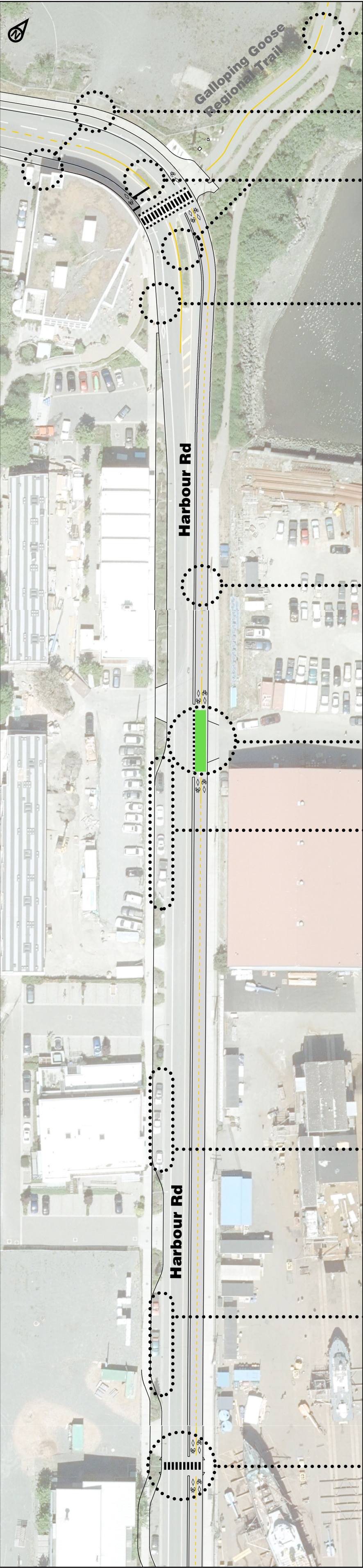


Key Design Features		
Vancouver Street	Harbour Road	Hillside-Quadra
<ul style="list-style-type: none"><li>• 2 kilometres of shared use cycling facilities</li><li>• 1.26 kilometres of protected bike lanes</li><li>• 11 pedestrian crossing improvements</li><li>• 2 new pedestrian plazas</li><li>• up to 13 new street trees</li><li>• 6 new traffic diversions</li><li>• up to 33 additional parking stalls</li></ul>	<ul style="list-style-type: none"><li>• 470 metres of two-way protected bike lanes</li><li>• 950 metres of paint line restoration</li><li>• 1 new mid-block pedestrian crossing</li><li>• no impact to on-street parking</li><li>• no impact to street trees or boulevards</li><li>• no impact to vehicle circulation or access</li></ul>	<ul style="list-style-type: none"><li>• 1.3 kilometres of shared use cycling facilities</li><li>• 2 pedestrian crossing improvements</li><li>• 3 cycling crossing improvements</li><li>• no impact to on-street parking</li><li>• no impact to street trees or boulevards</li><li>• neighbourhood traffic calming</li></ul>



# HARBOUR ROAD AAA CORRIDOR

## Harbour Road | Galloping Goose to Johnson Street Bridge



Repaint centreline on Galloping Goose trail between Harbour Road and Selkirk Trestle

Retain existing bike lanes on Harbour Road north of Galloping Goose connection

Remove medians and realign centreline of road to accommodate commercial vehicles

Remove painted bike lanes

Add two-way protected bike lane on east side of Harbour Road

Accommodate commercial vehicle turning requirements at driveways

Retain all existing on-street parking on west side of Harbour Road

Retain all existing on-street parking on west side of Harbour Road

Retain all existing on-street parking on west side of Harbour Road

Provide new mid-block crossing at 356 Harbour Road

Retain all existing on-street parking on west side of Harbour Road

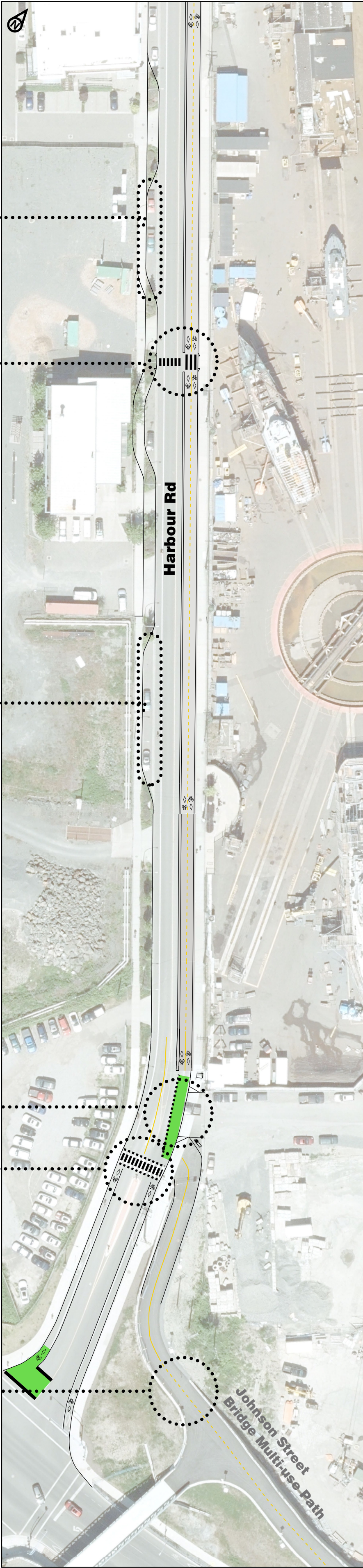
Provide a mid-block crossing at 356 Harbour Road

Retain all existing on-street parking on west side of Harbour Road

Confirm driveway details with property owners

Add paint marking to transition from painted bike lanes to two-way protected bike lanes

Paint centreline and stencils on Johnson Street Bridge multi-use path between Harbour Road and bridge deck

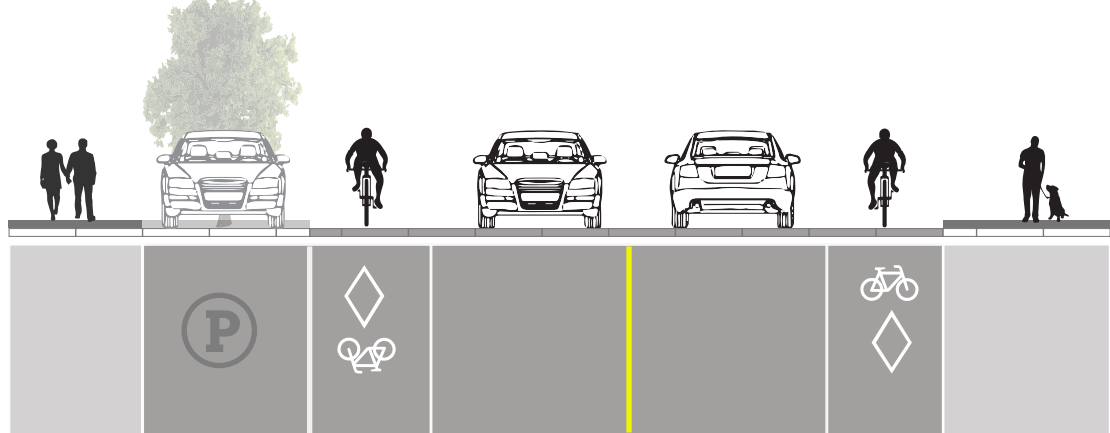




# HARBOUR ROAD - Galloping Goose to Johnson Street Bridge

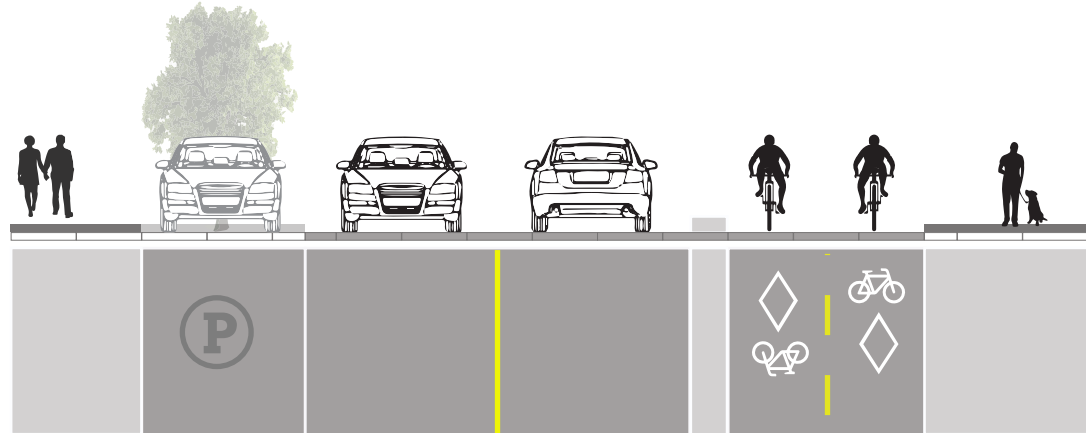
## Recommended Design Changes & Rationale

### Existing Cross Section



GALLOPING GOOSE TO JOHNSON STREET BRIDGE - 17 m ROW

### Proposed Cross Section



GALLOPING GOOSE TO JOHNSON STREET BRIDGE - 17 m ROW

Existing Conditions	Proposed Conditions	Rationale
Cycling Facilities		
Painted bike lanes.	Two-way protected bike lane (east side).	Protected bike lanes are required due to the heavy commercial vehicle activity and anticipated increases in traffic volumes from development.
Pedestrian Amenities		
Sidewalks buffered by boulevards in select areas.	1 new pedestrian crossing at ~ 356 Harbour Road. The new bike lane will further separate pedestrians from vehicles on the east side of Harbour Road.	Provides a safer and more accessible pedestrian environment.
Public Realm / Landscaping		
Existing conditions illustrated in cross section.	Medians will require removal in select areas.	To accommodate commercial vehicle turning radius.
Vehicle Speeds		
Posted speed limits are 30 km/hr speed limit.	Posted speed limits of 30 km/hr to be retained.	No change.
Vehicle Volumes & Circulation		
Existing traffic volumes on Harbour Road ~ 1200 vpd	Anticipated traffic volumes are ~ 1200 vpd.	No change.
On-street Parking / Loading		
16 parking stalls	16 parking stalls (no change)	No change.
Road Classification		
Local Road (500 - 1000 vpd)	Local Road (500 - 1000 vpd)	No change.