

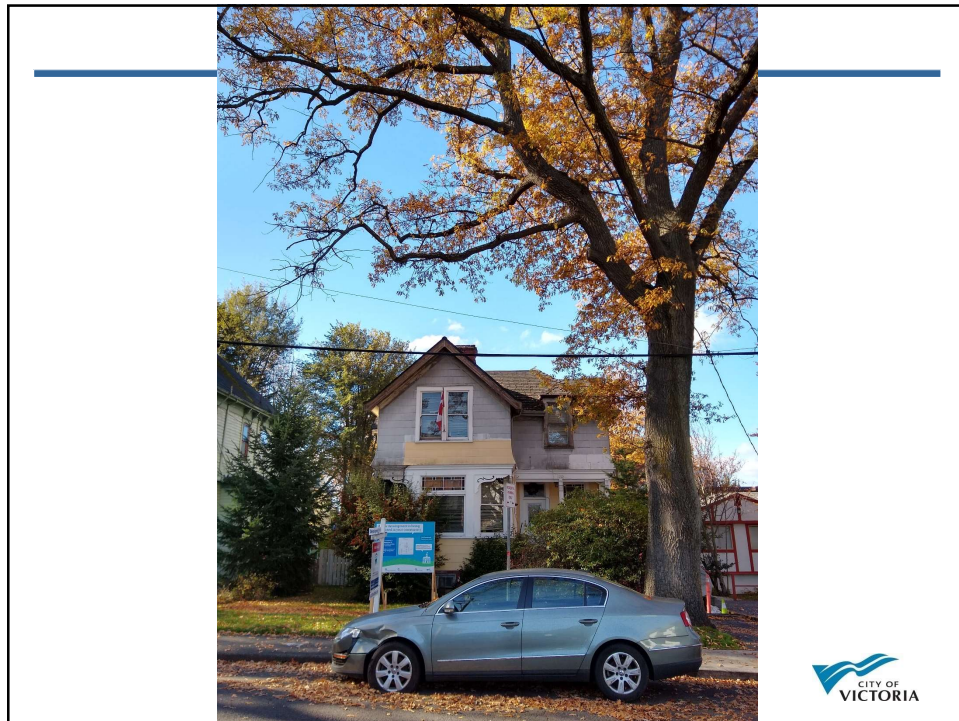
# Rezoning Application for 1442 Elford Street



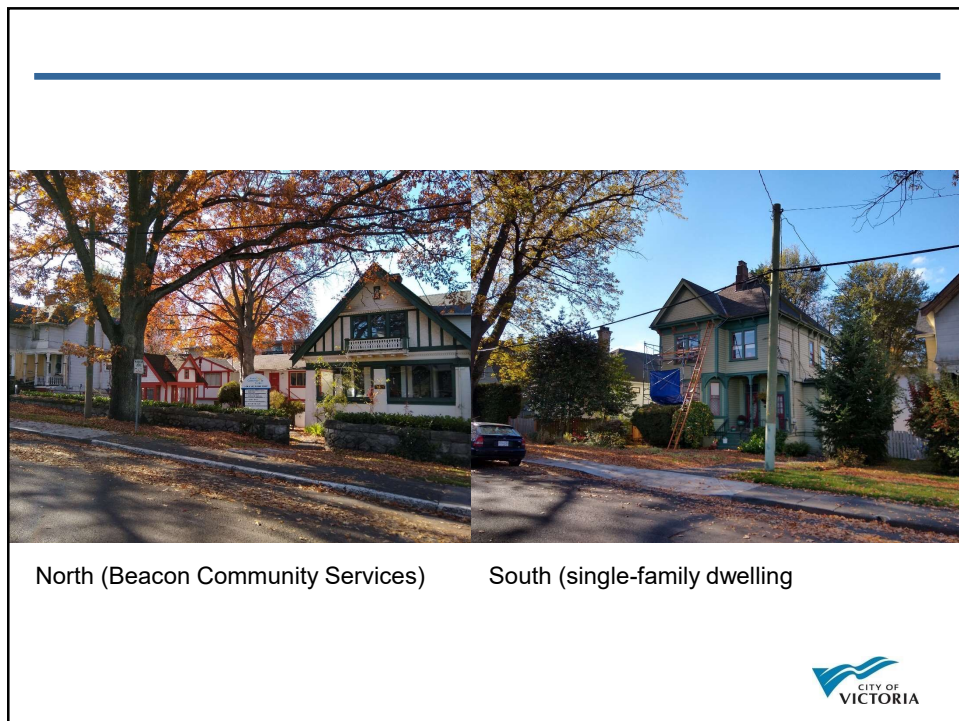
1



2



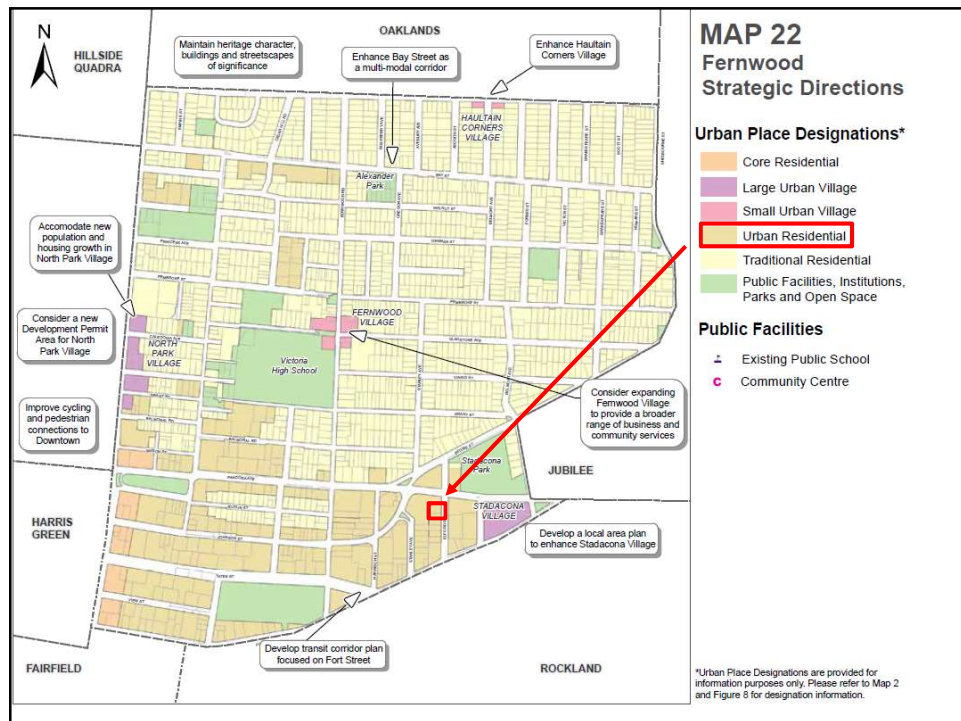
3



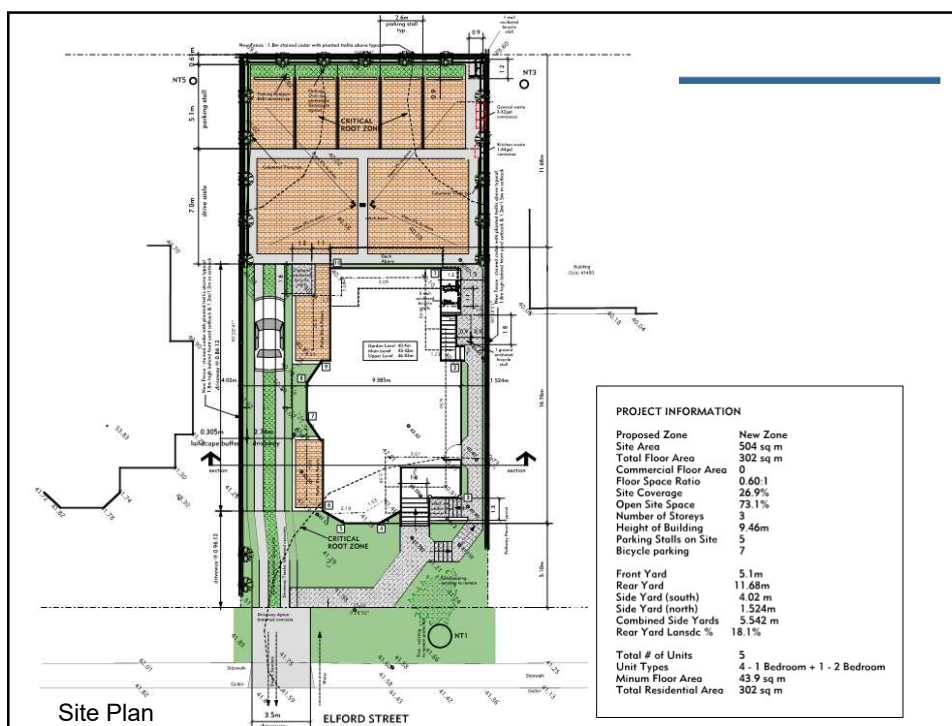
4



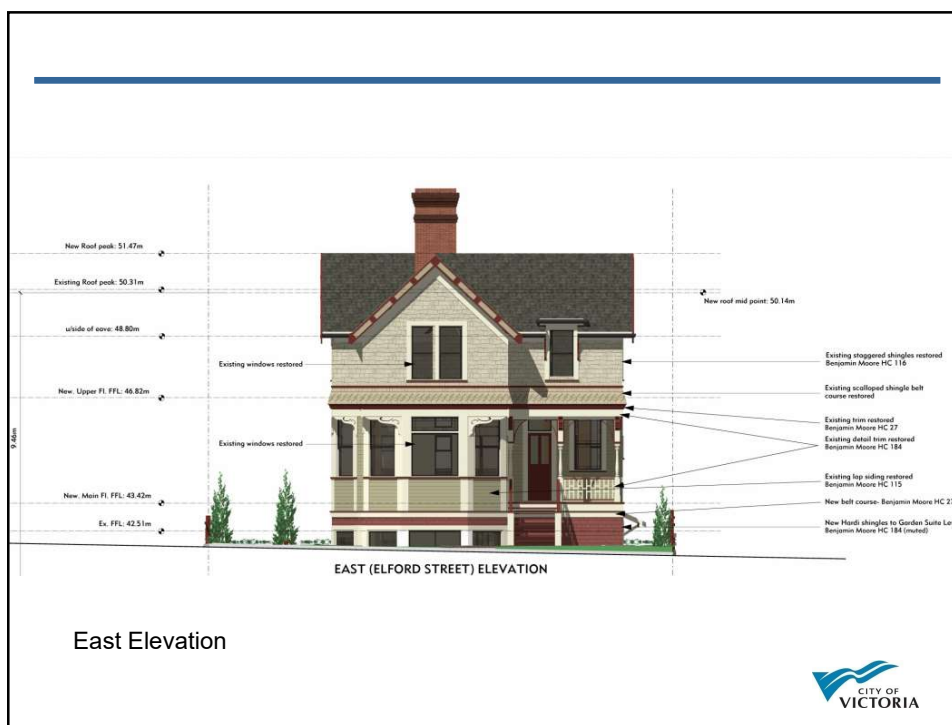
5



6

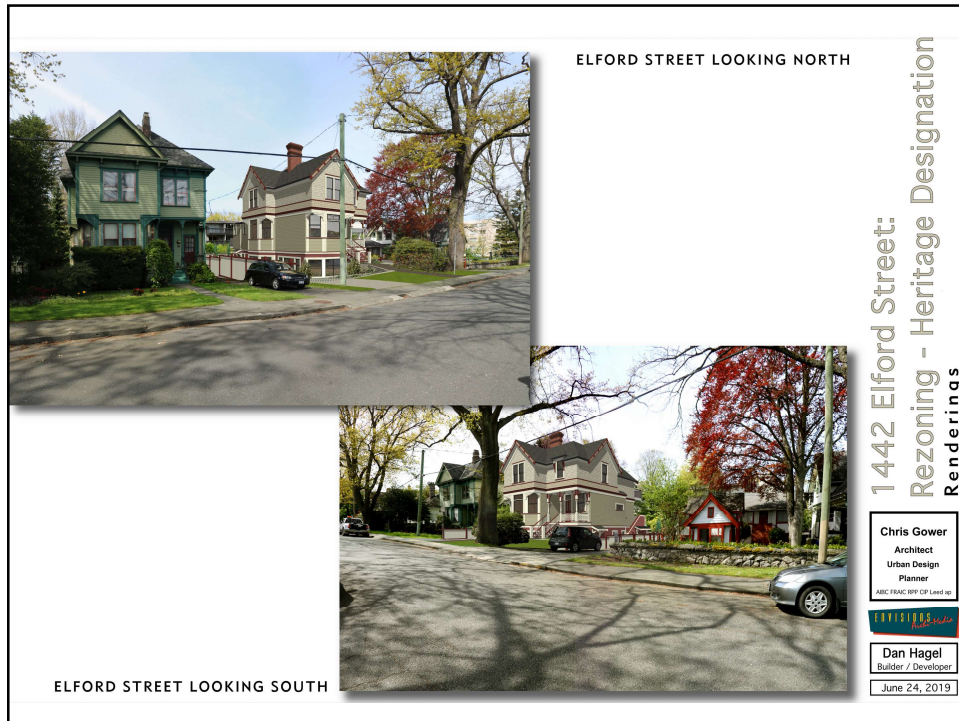


7

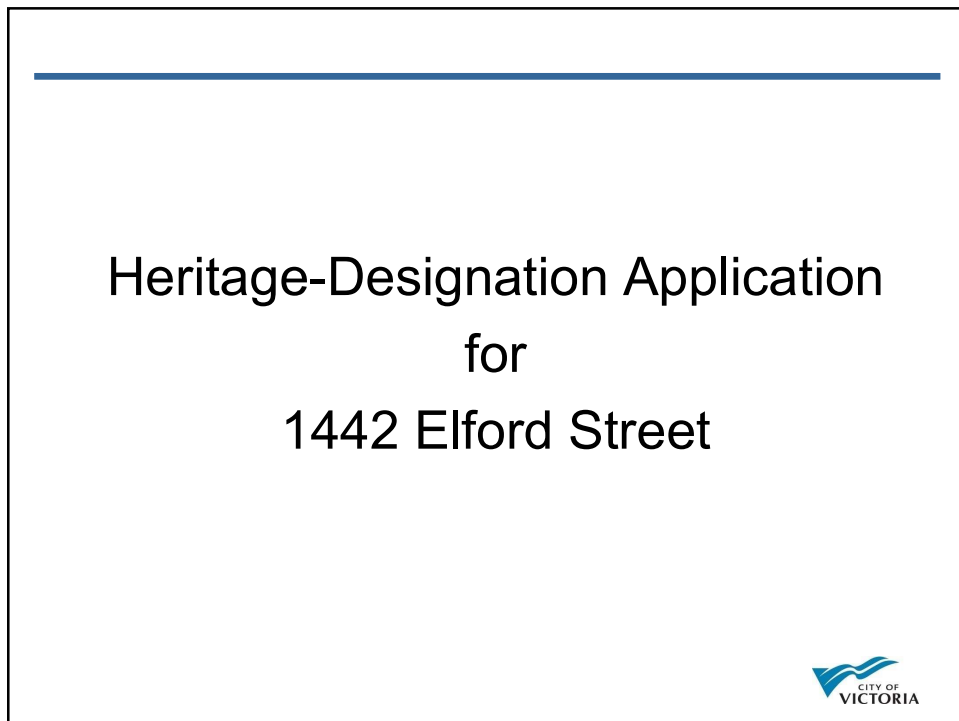


8





11



12

**Proposal:**

- Heritage designation of the heritage-registered house at 1442 Elford Street consistent with plans dated October 16, 2019
- Restoration with appropriate alterations

**Current Heritage Status:**

- Heritage-registered



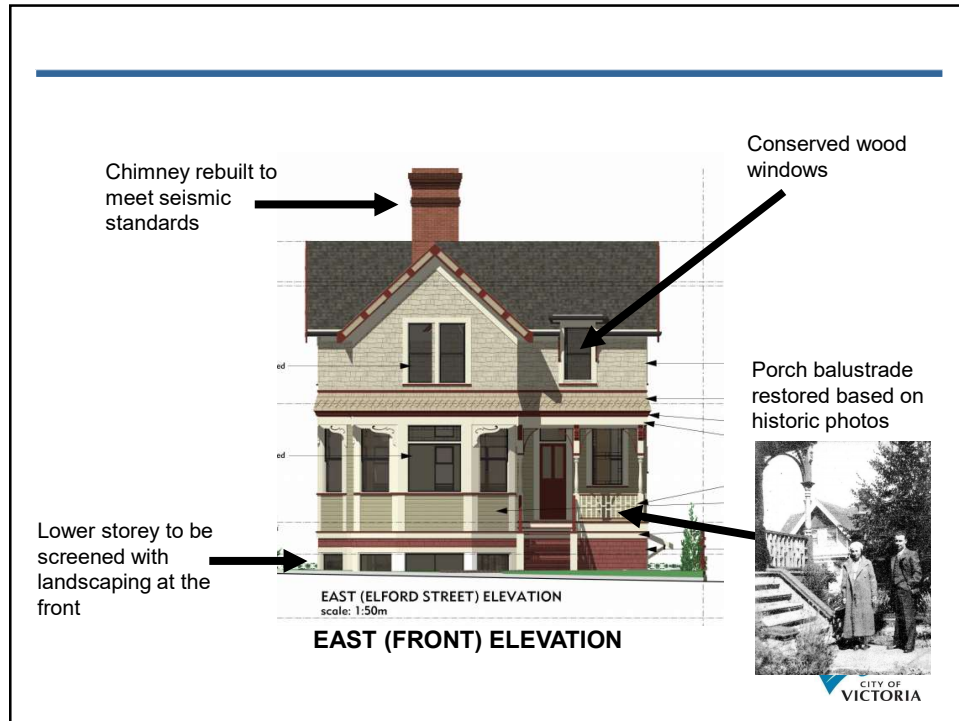
13

**Alterations to Existing House**

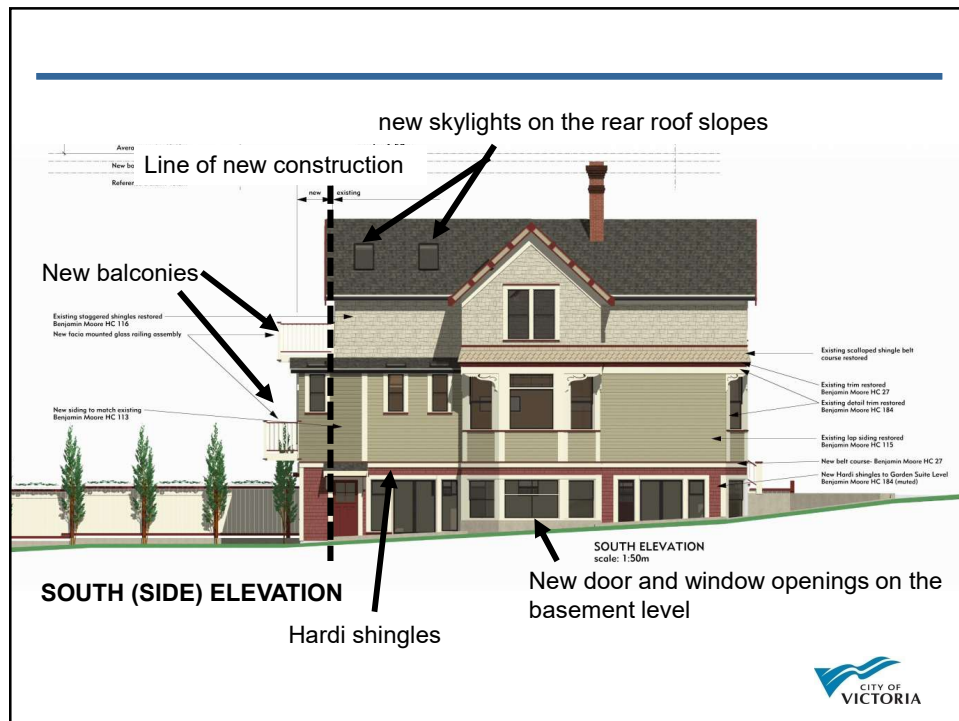
- Construct a 4 foot rear addition
- To lift the house approximately 1.3m and move it approximately 1m north on the lot
- To remove the asbestos siding, restore the original drop wood siding on the main floor and wood shingles on the upper storey
- Restore porch details
- Additional window and door openings at basement level



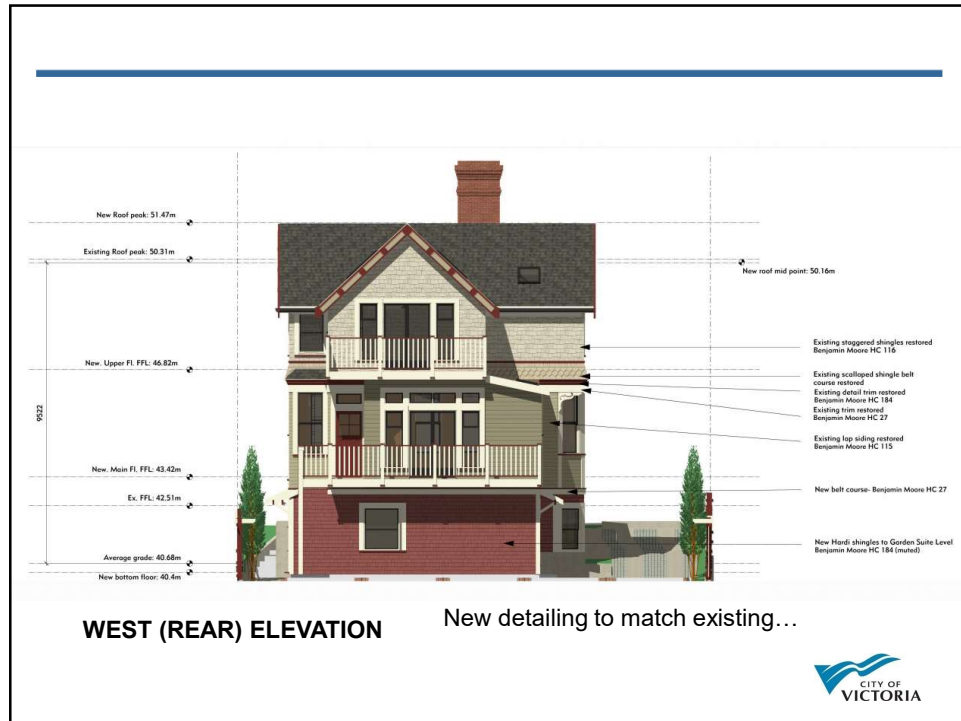
14



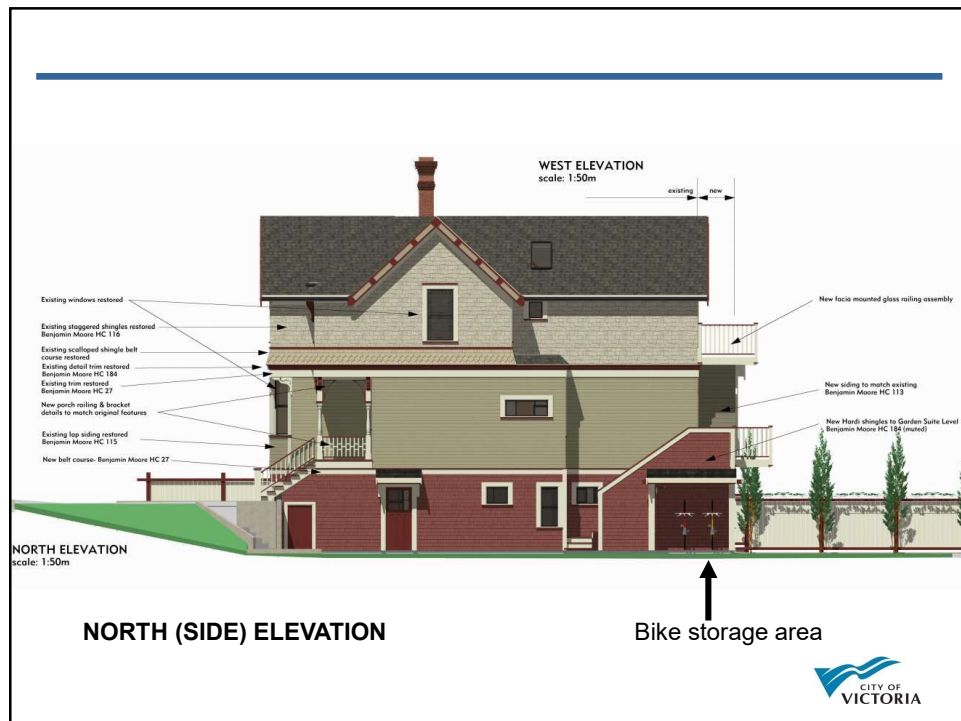
15



16



17



18



19

**Designation Assessment:** Does the property have sufficient *heritage value* or *heritage character*?

**Heritage Value:** The Intangible value and associations of the property

**Heritage Character:** Key physical traits or features

*(Local Government Act, Section 611)*

A photograph of a two-story house with green siding and a red roof, located on a street. A black car is parked in front of the house. The City of Victoria logo is in the bottom right corner.

20

