

East Façade along Broad Street



Southeast Corner View



1314-1324 BROAD STREET, 615-625 JOHNSON STREET



Rusticated Stone Corner Piers



Non-Original Raked Storefront with Original Cast Iron Columns



1314-1324 BROAD STREET, 615-625 JOHNSON STREET



Modified Storefront



Central Entrance

1314-1324 BROAD STREET, 615-625 JOHNSON STREET



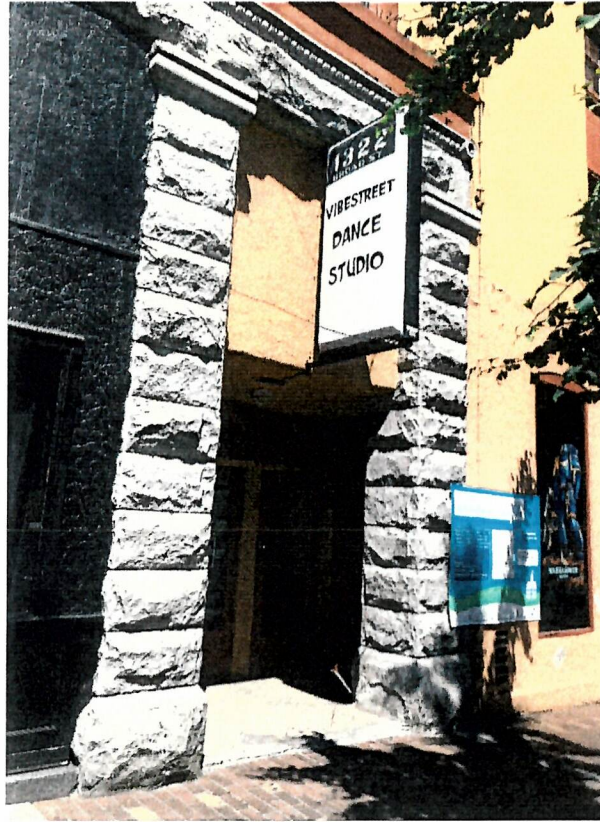
Decorated Upper Triangular Pediment and Name and Date Plates



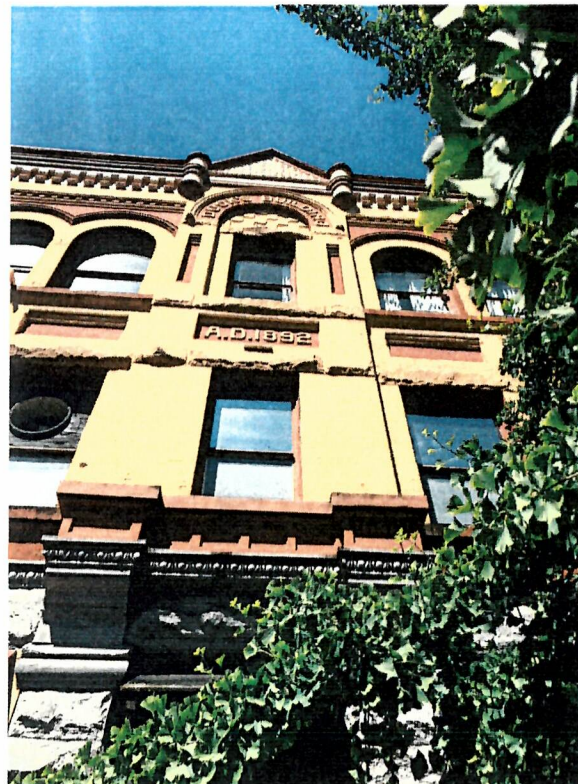
Arched Windows on Upper Storey



1314-1324 BROAD STREET, 615-625 JOHNSON STREET



North End Entrance to Upper Storeys

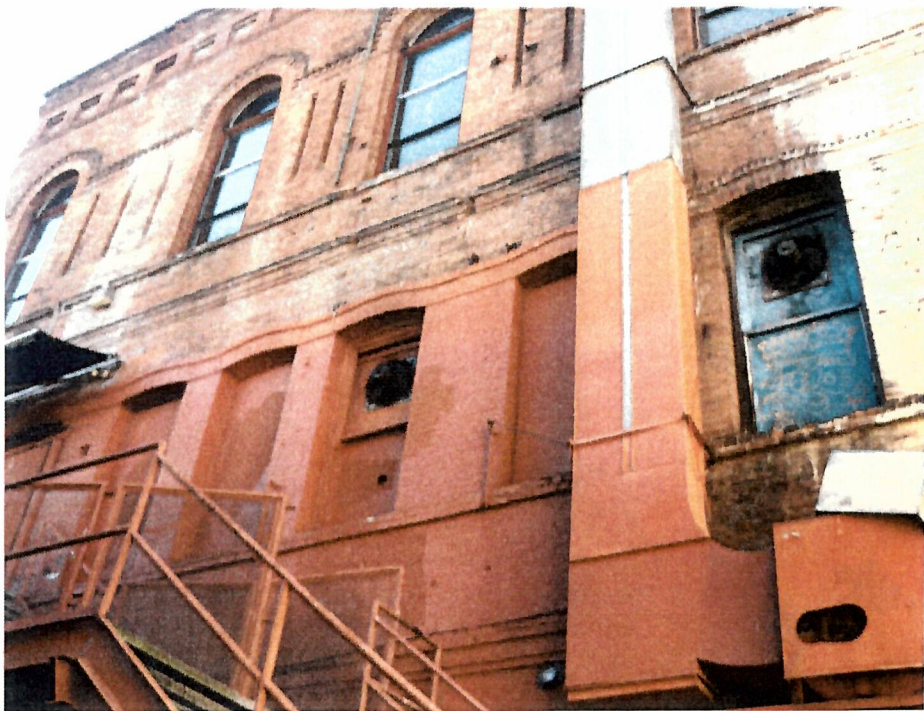


Prominent Central Features

1314-1324 BROAD STREET, 615-625 JOHNSON STREET



Rear (west) elevation

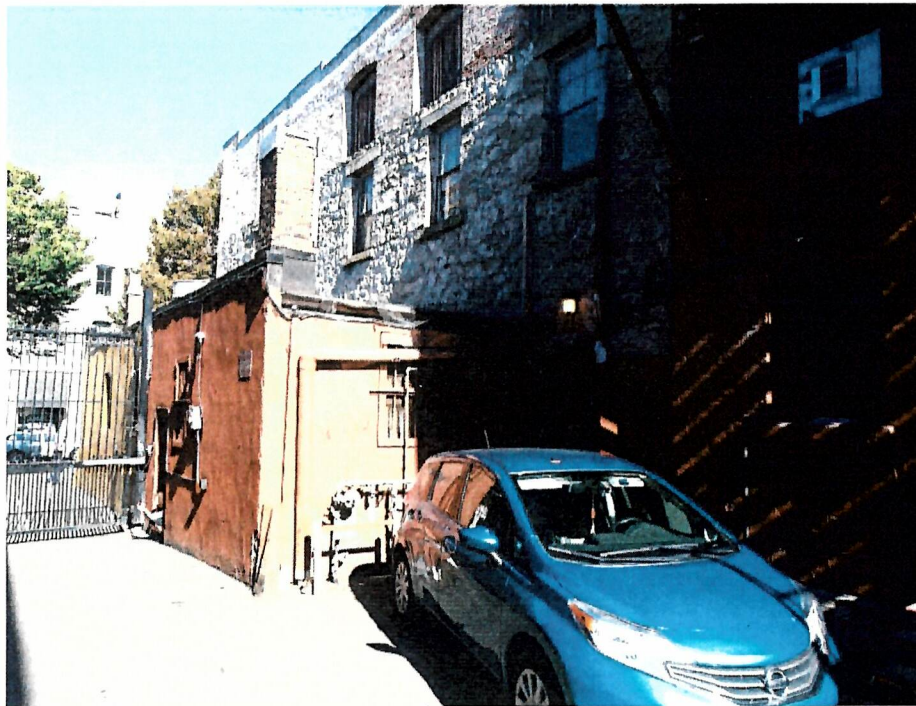




1314-1324 BROAD STREET, 615-625 JOHNSON STREET



Rear elevation close-up



Rubble wall- former Duck's Carriage Factory (615-625 Johnson Street)

1314-1324 BROAD STREET, 615-625 JOHNSON STREET



615-625 Johnson Street