
Development Permit with Variance for 1700 Blanshard Street



1

Aerial



2



3

Neighbouring Properties

HUDSON PLACE ONE

HUDSON WALK TWO

HUDSON WALK TWO

HUDSON MEWS

HUDSON WALK ONE

THE HUDSON

THE HUDSON

JACK DAVIS

CITY OF VICTORIA

4

Neighbouring Properties - West



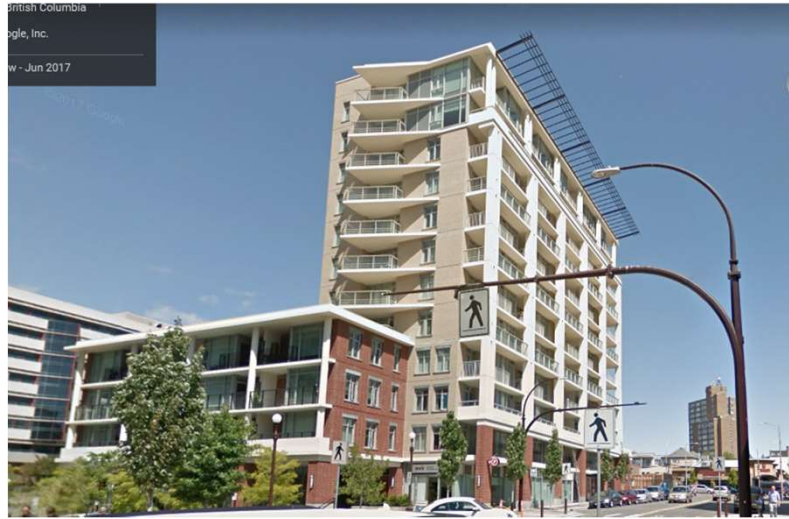
5

Neighbouring Properties – North



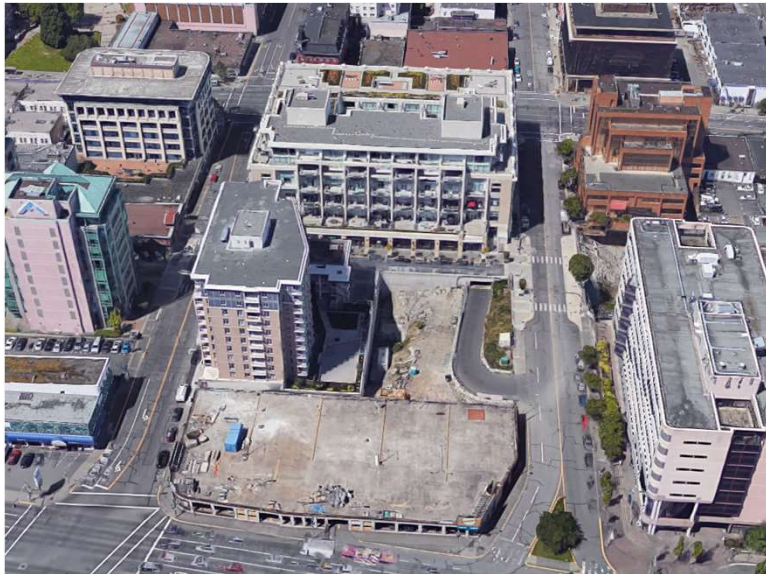
6

Neighbouring Properties – South

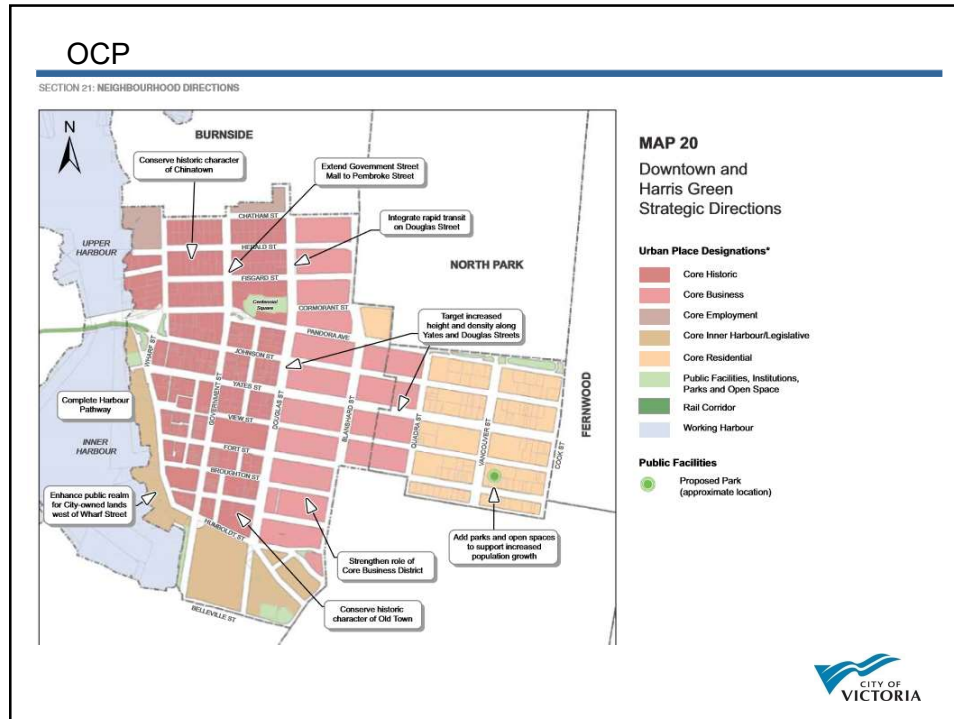


7

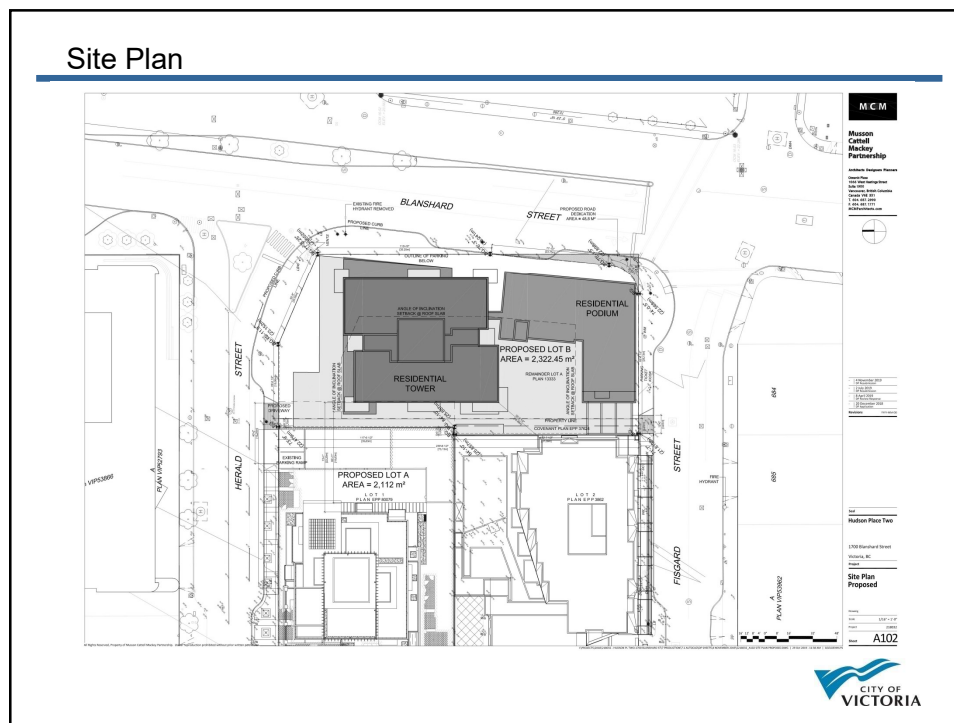
Context– Looking West



8

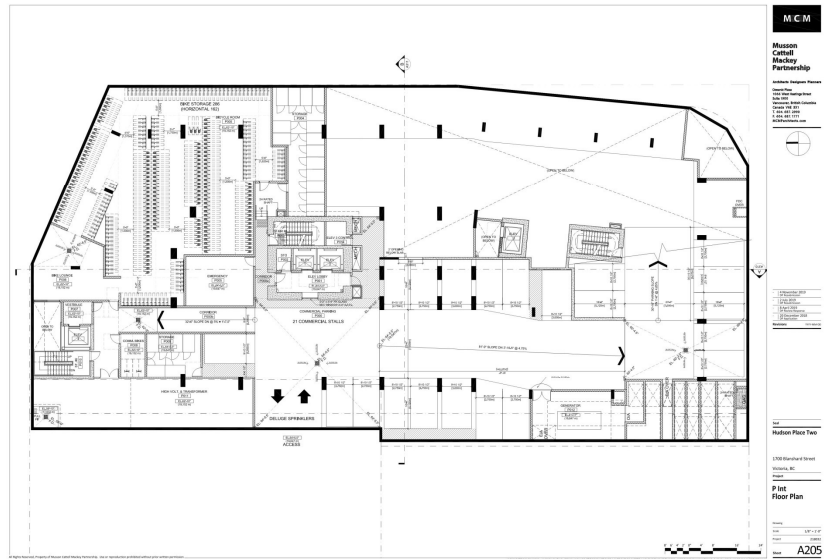


9



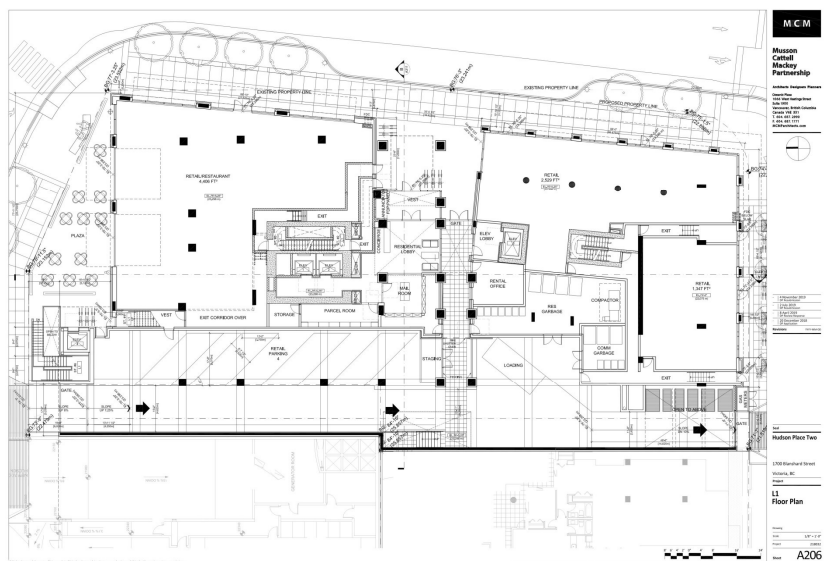
10

Parking level 1 or 5



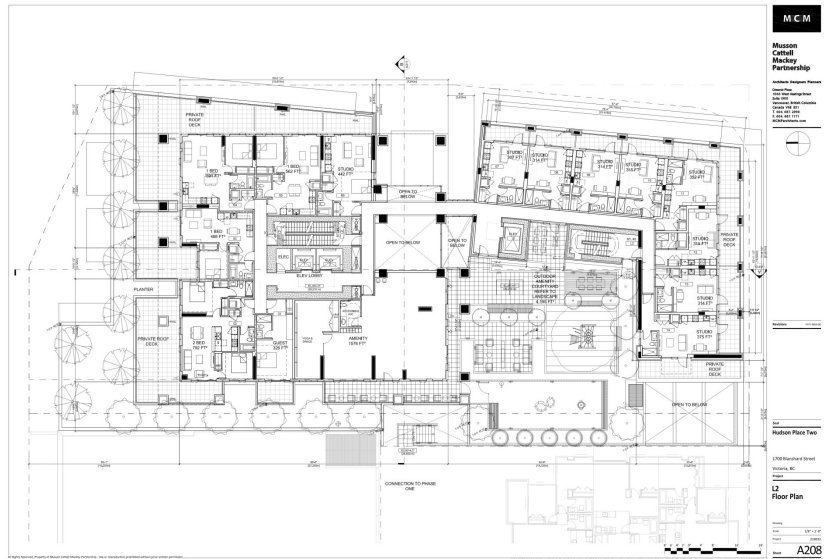
11

First Floor



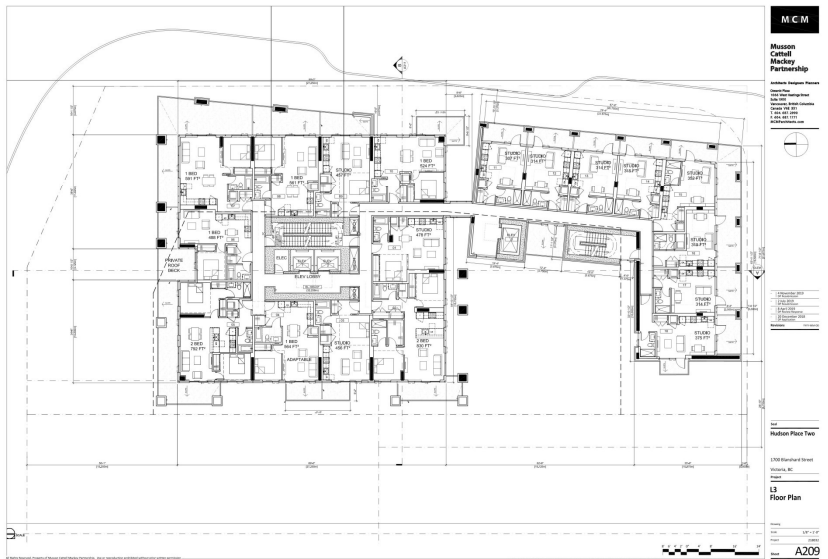
12

Level 2



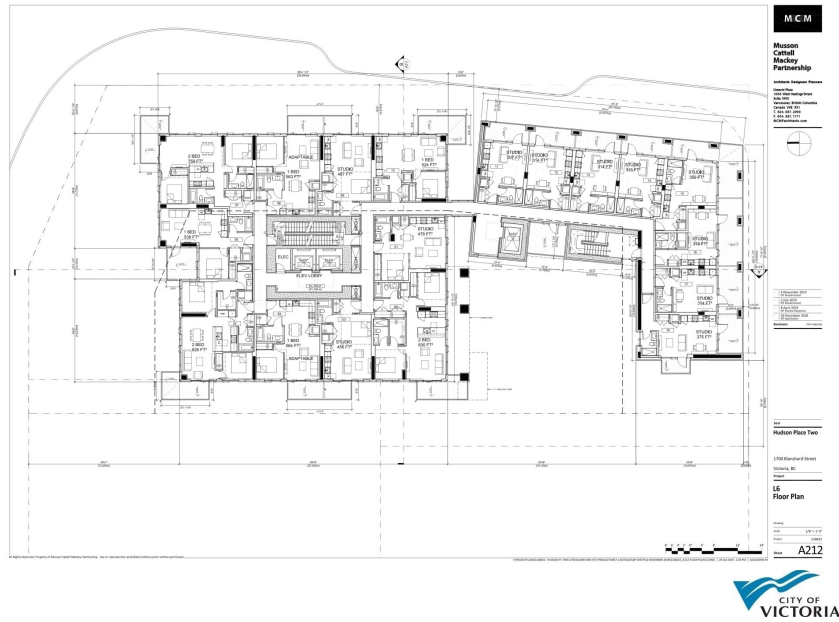
13

Level 3-5



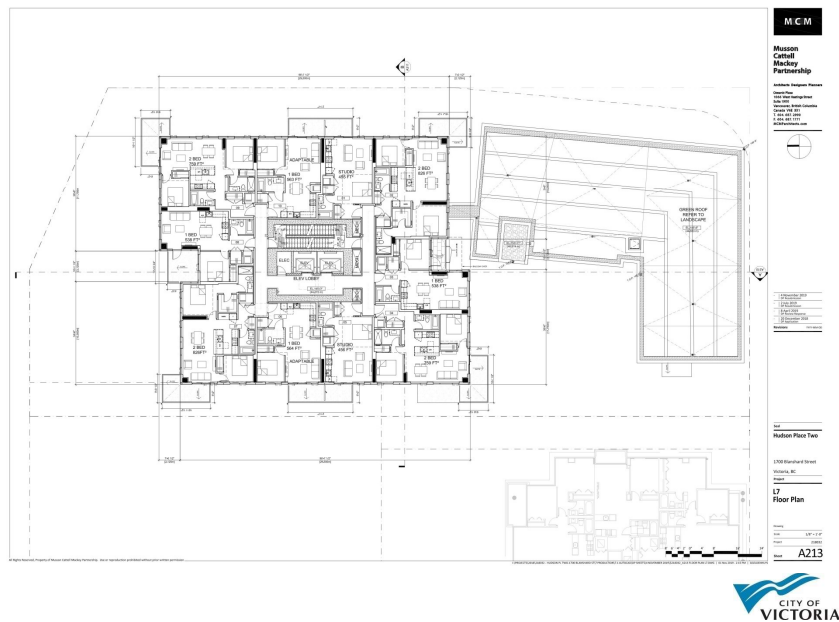
14

Level 6



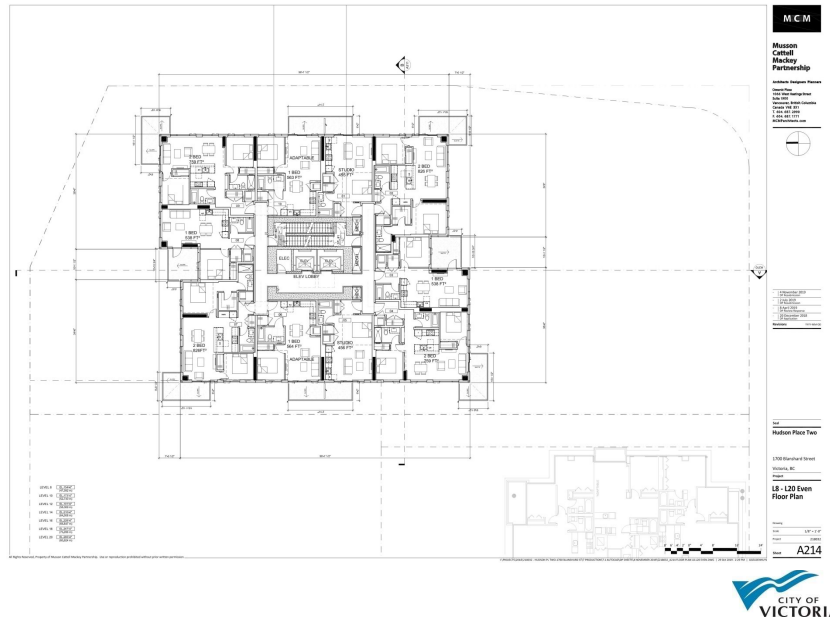
15

Level 7



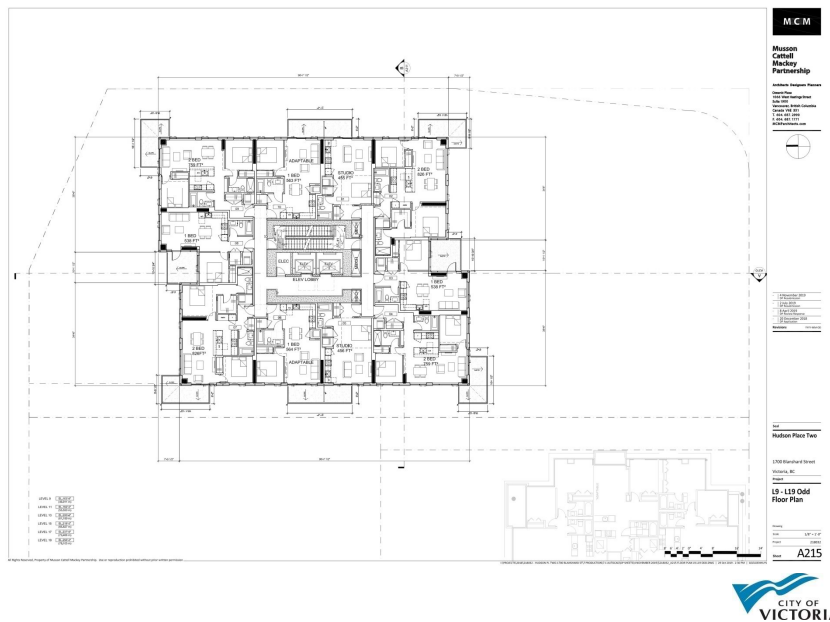
16

Level 8-20 (Even)

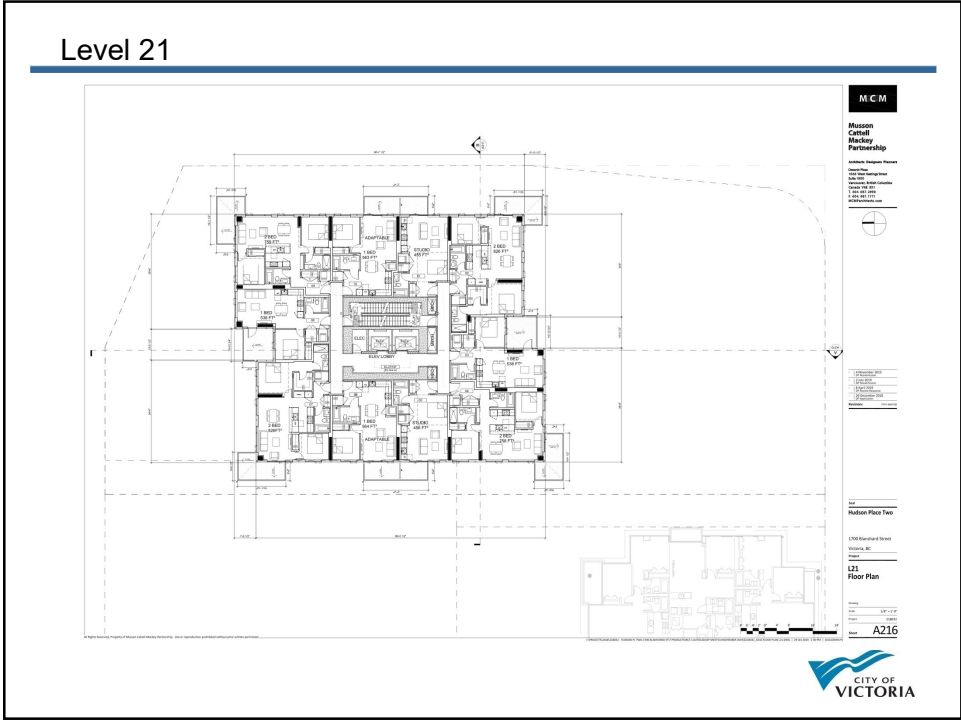


17

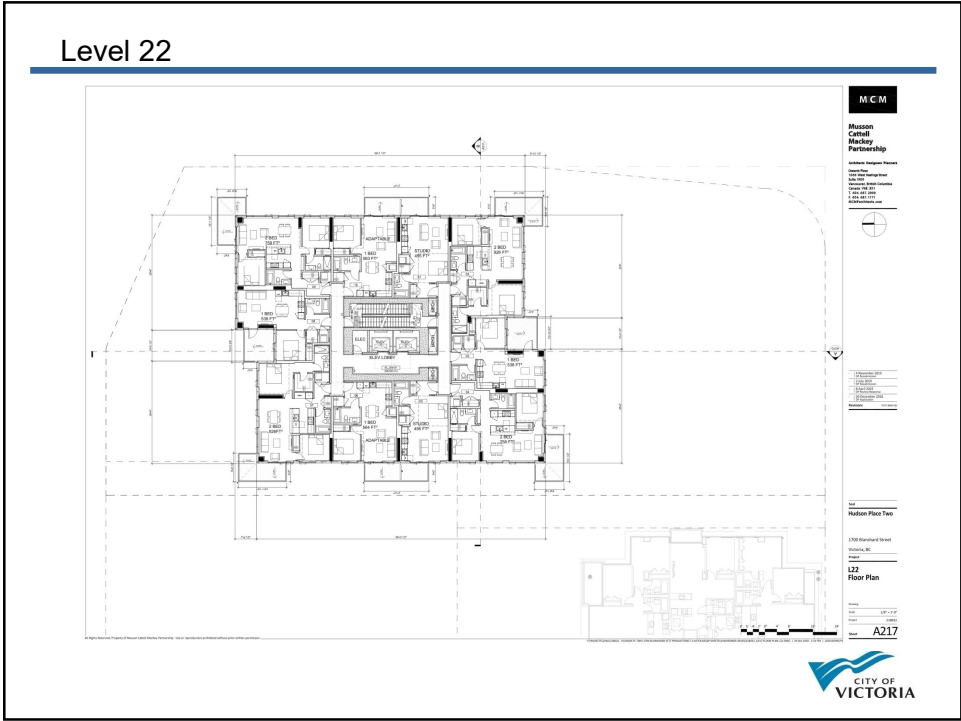
Level 9-19 (Odd)



18

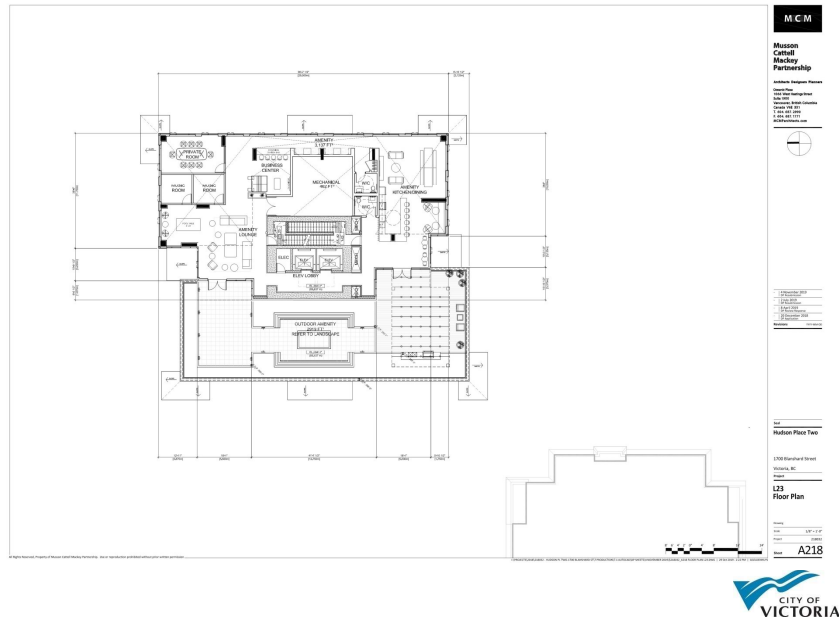


19



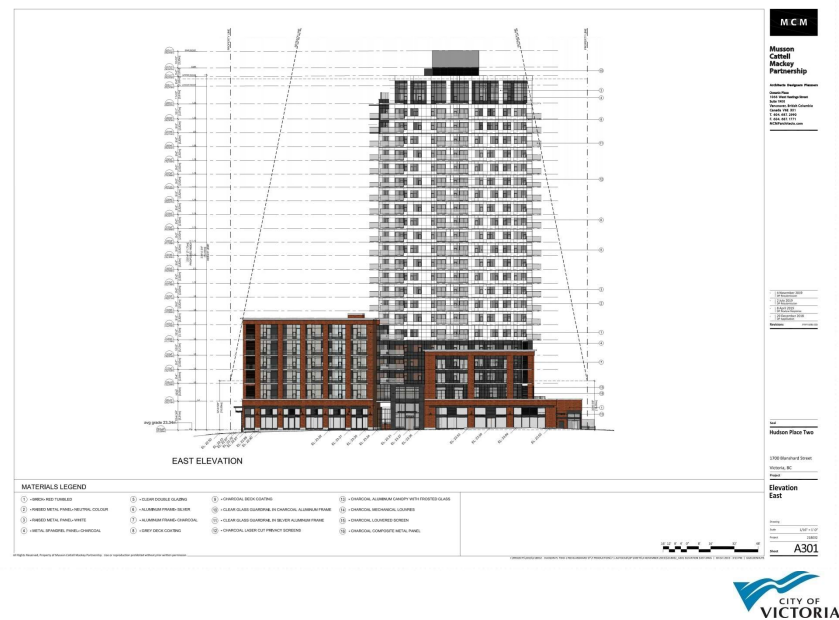
20

Level 23



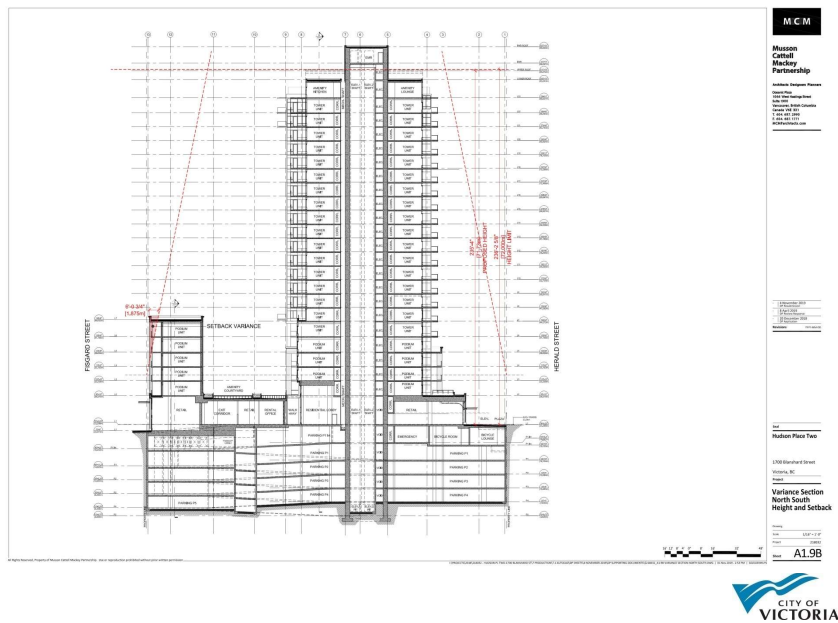
21

East Elevation



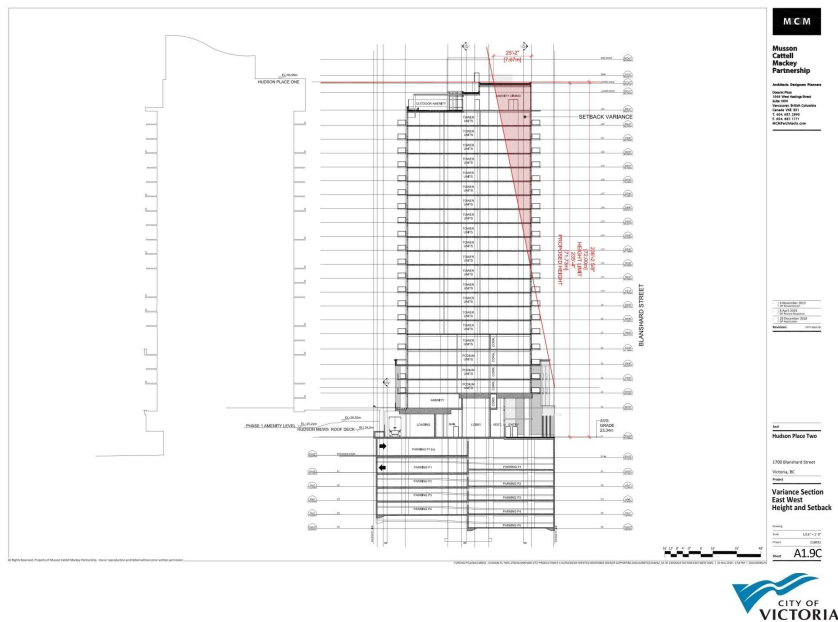
22

Set Back Variance



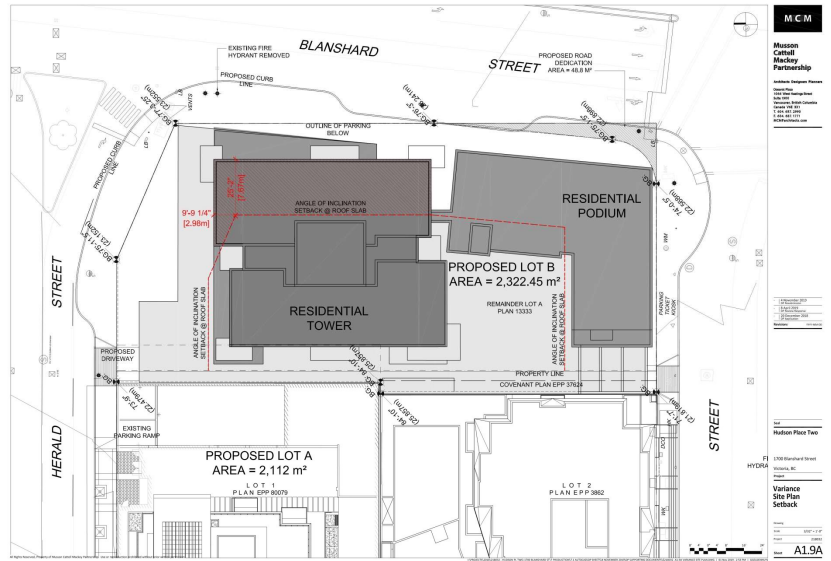
25

Set Back Variance

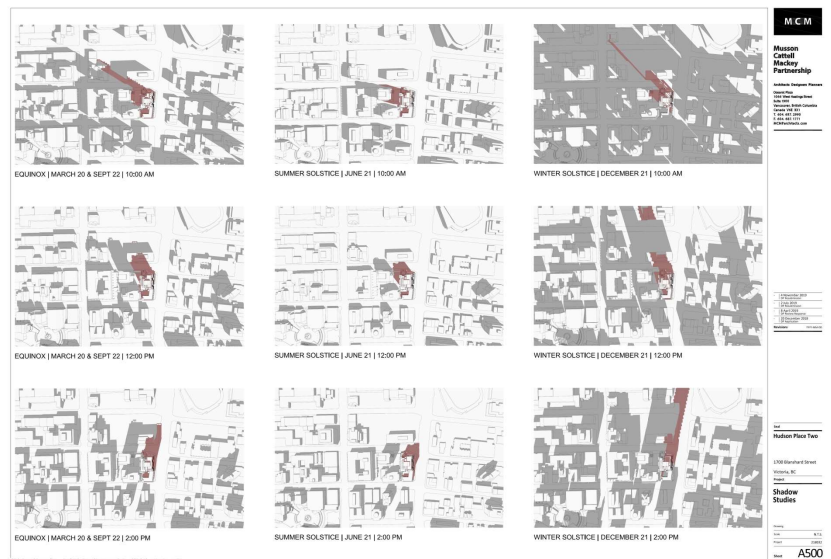


26

Set Back Variance



27



28

Street Elevations



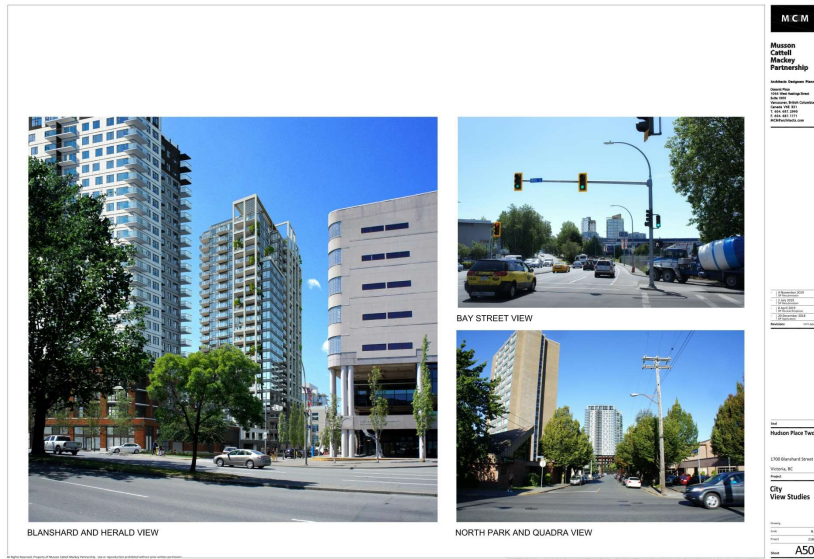
29

Street Elevations



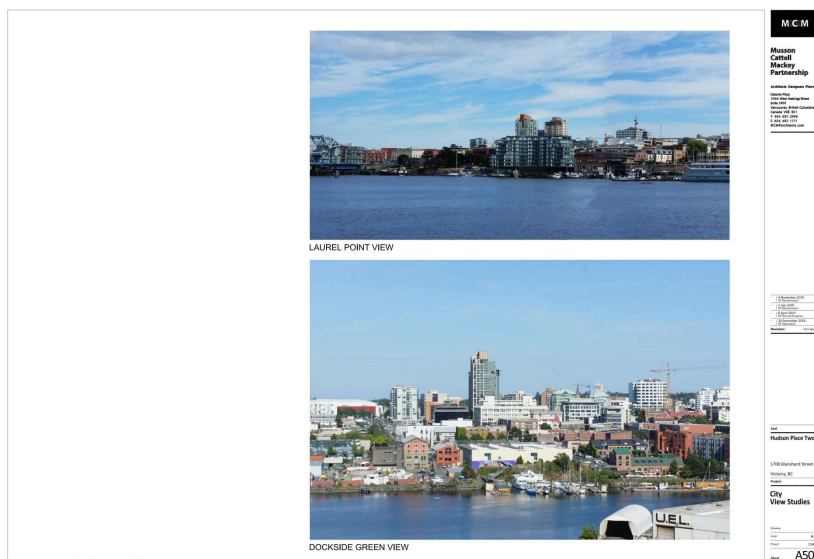
30

Renderings- Distant Views



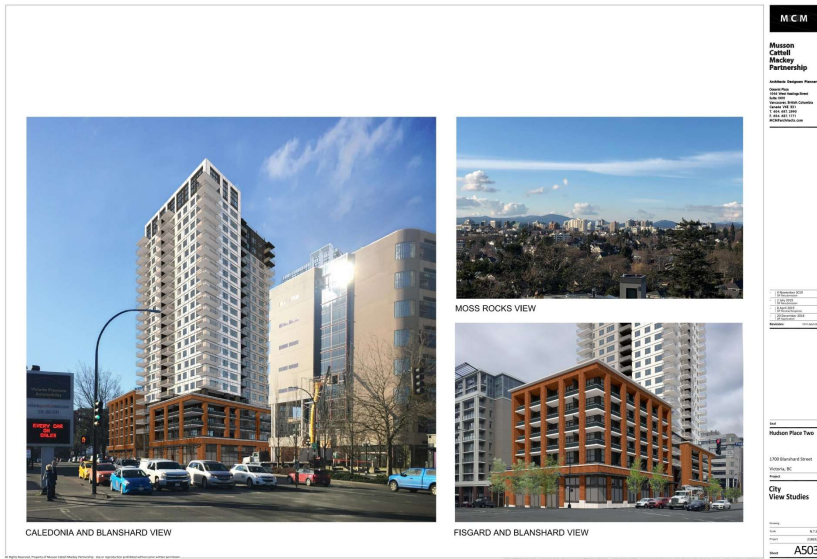
31

Distant Views



32

Renderings



33

Skyline Analysis



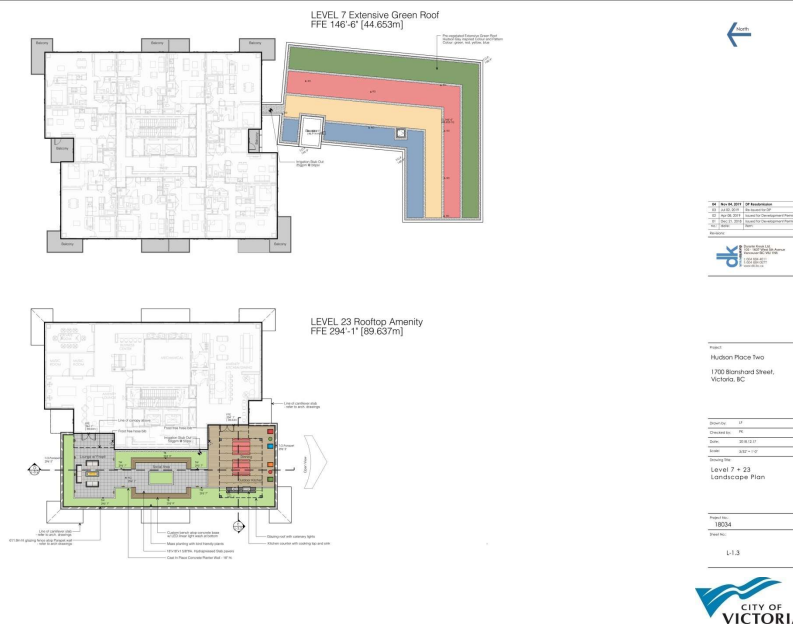
SKYLINE ANALYSIS - LAUREL POINT



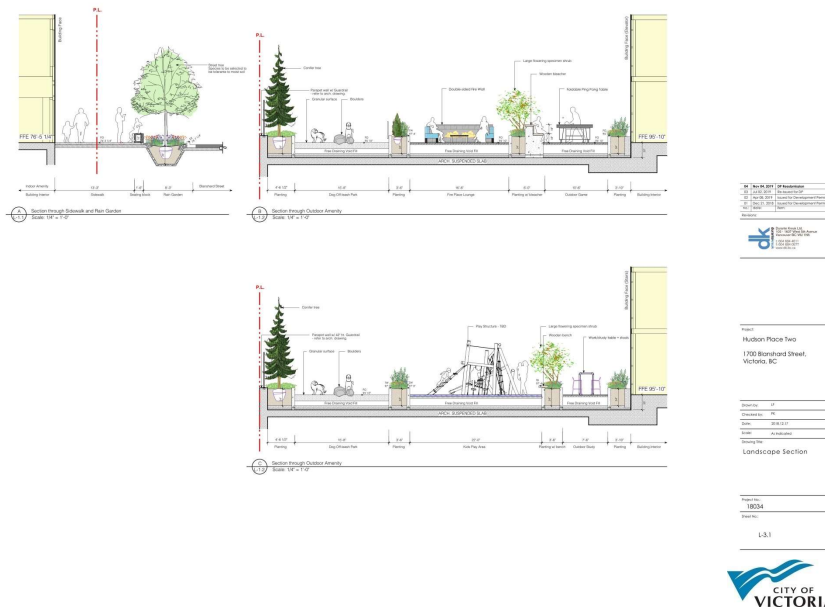
34



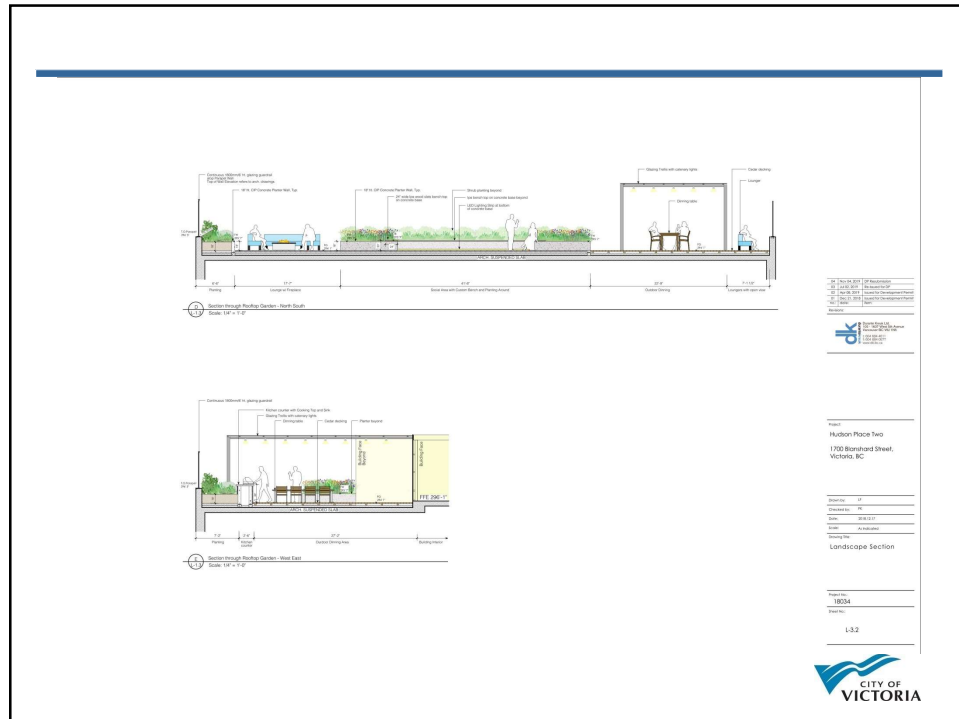
Landscape Plan Roof-top



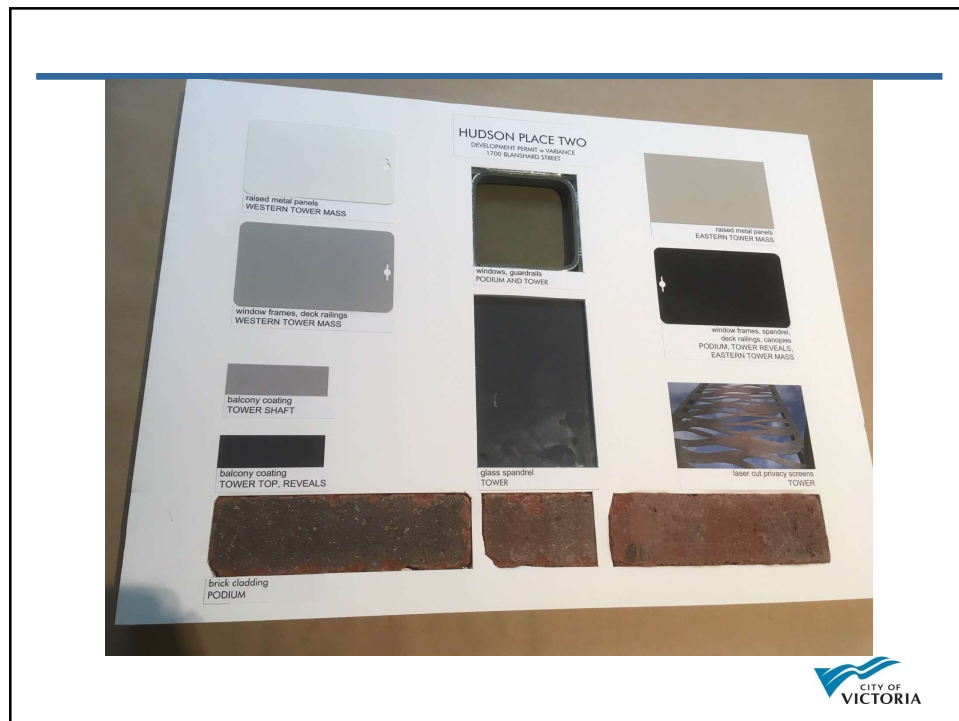
39



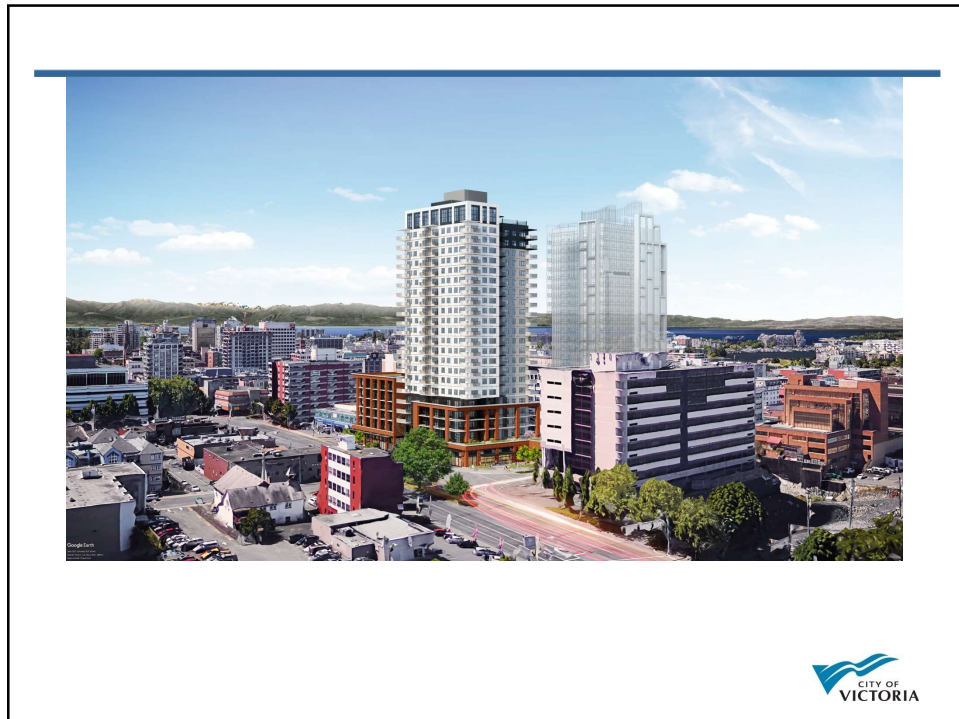
40



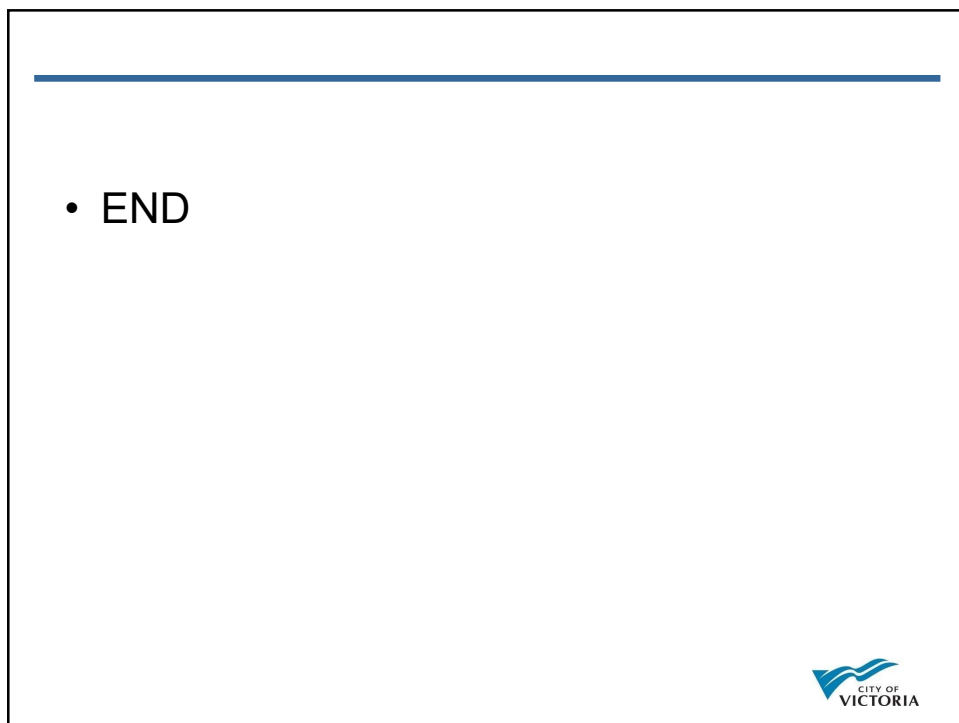
41



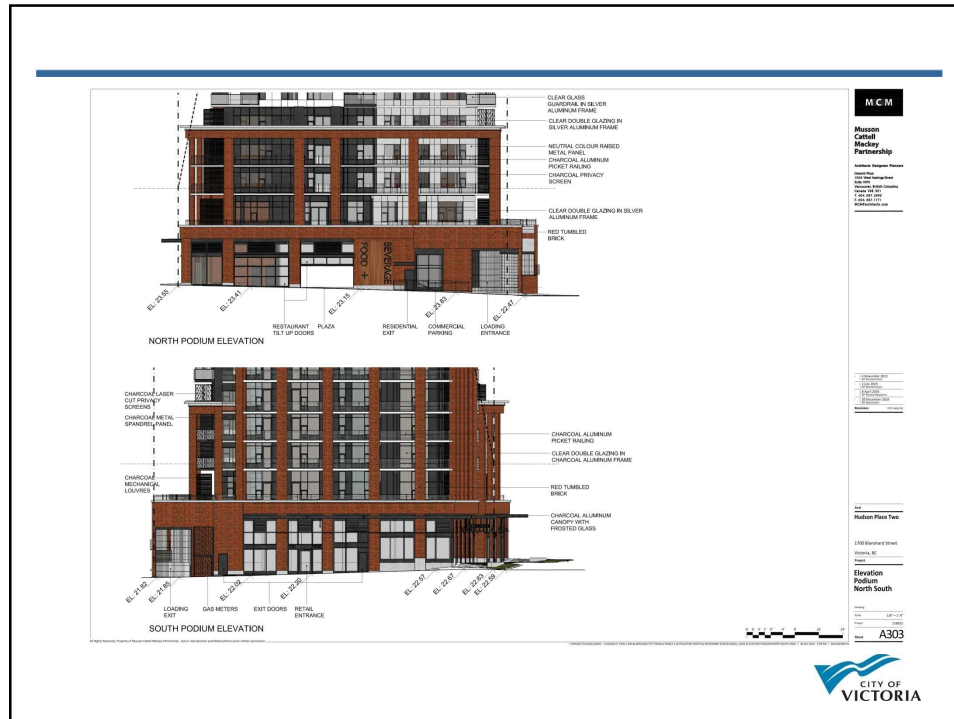
42



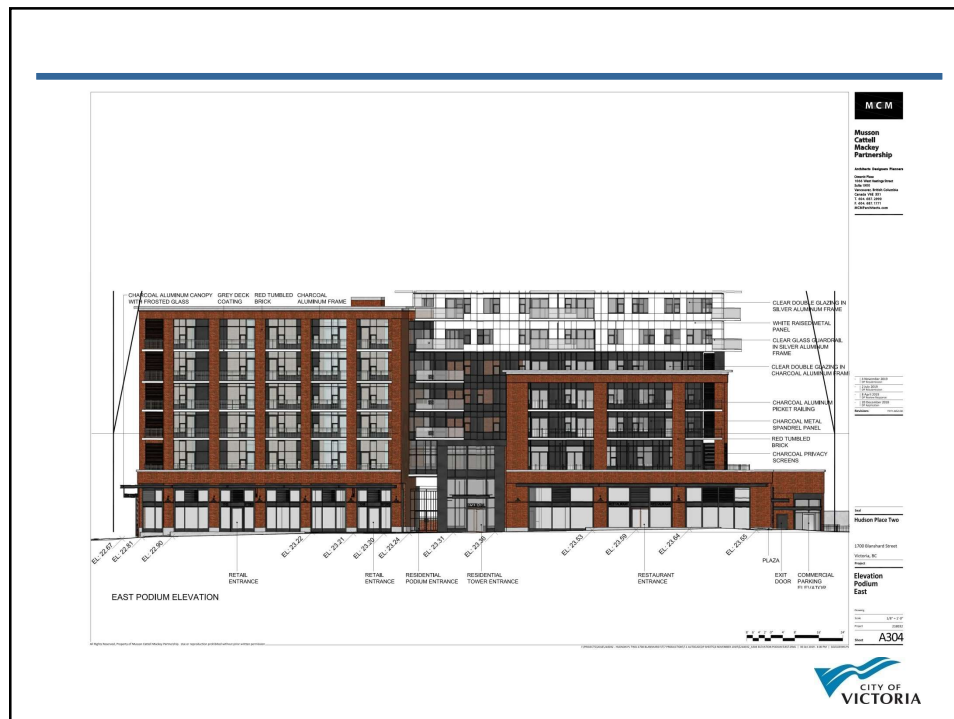
43



44

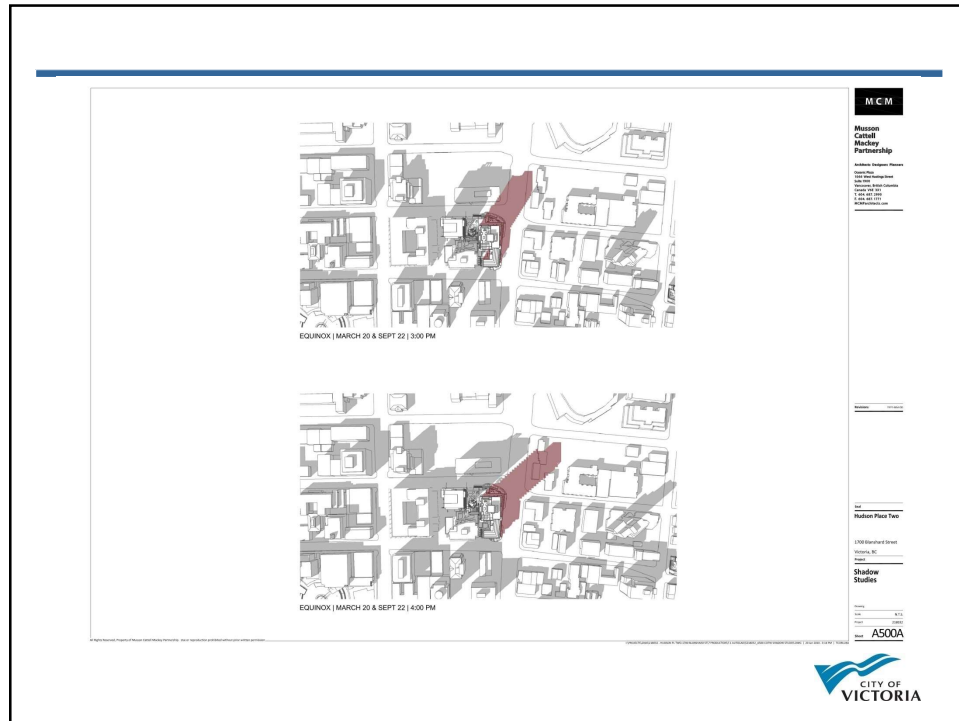


45

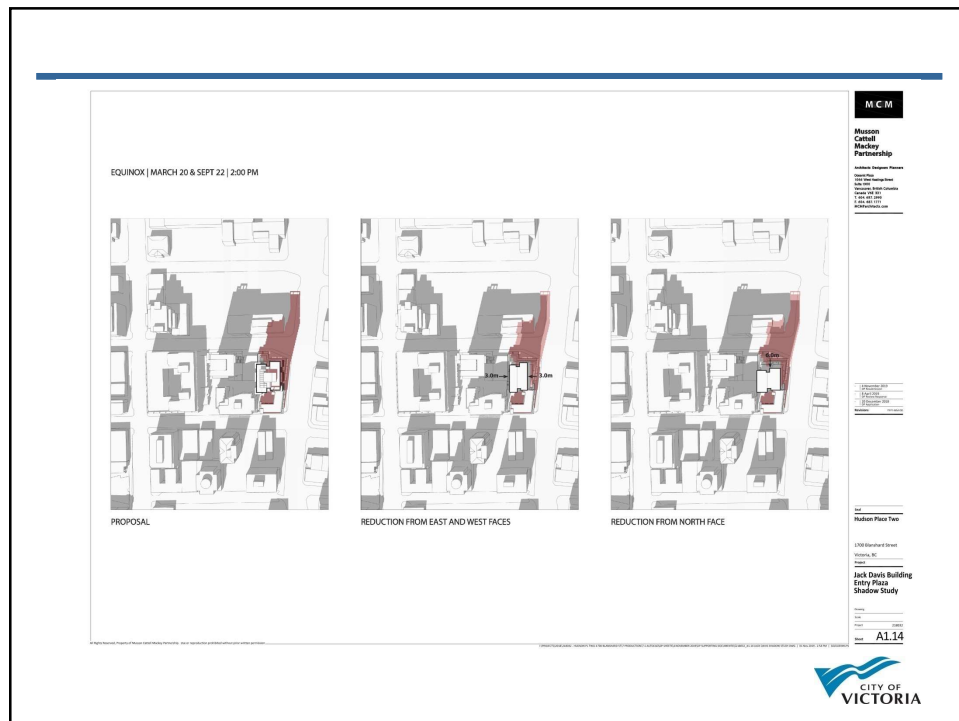


46

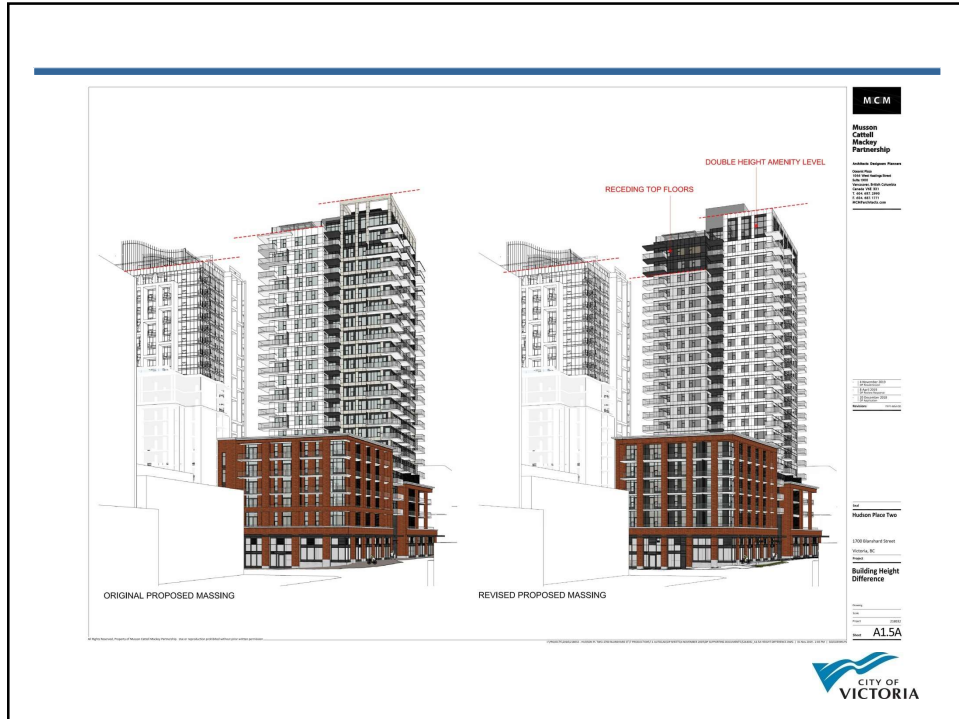




49



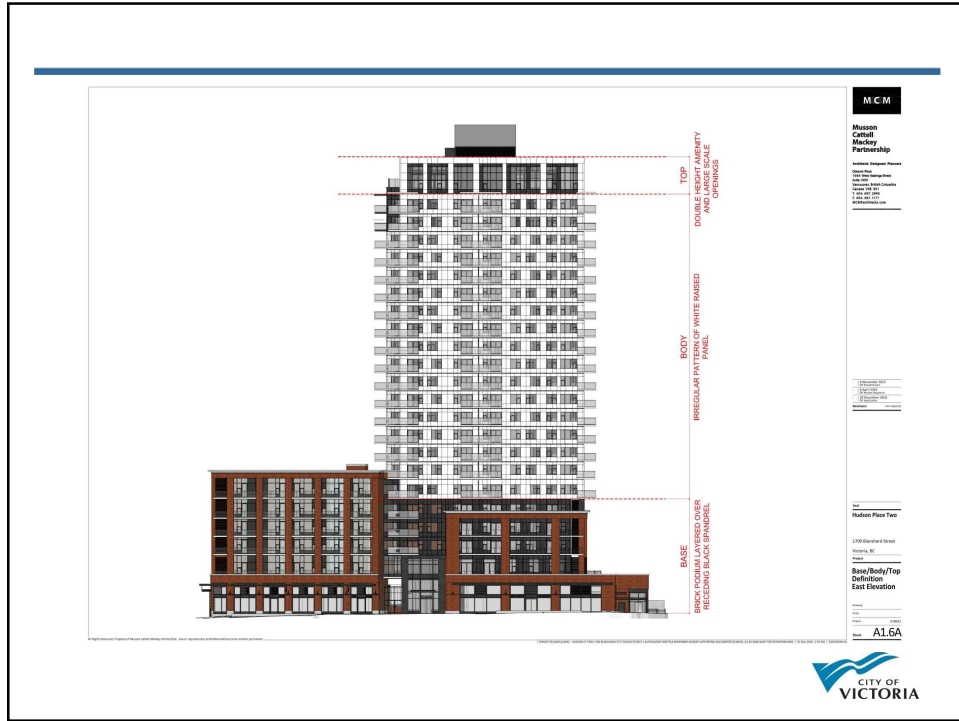
50



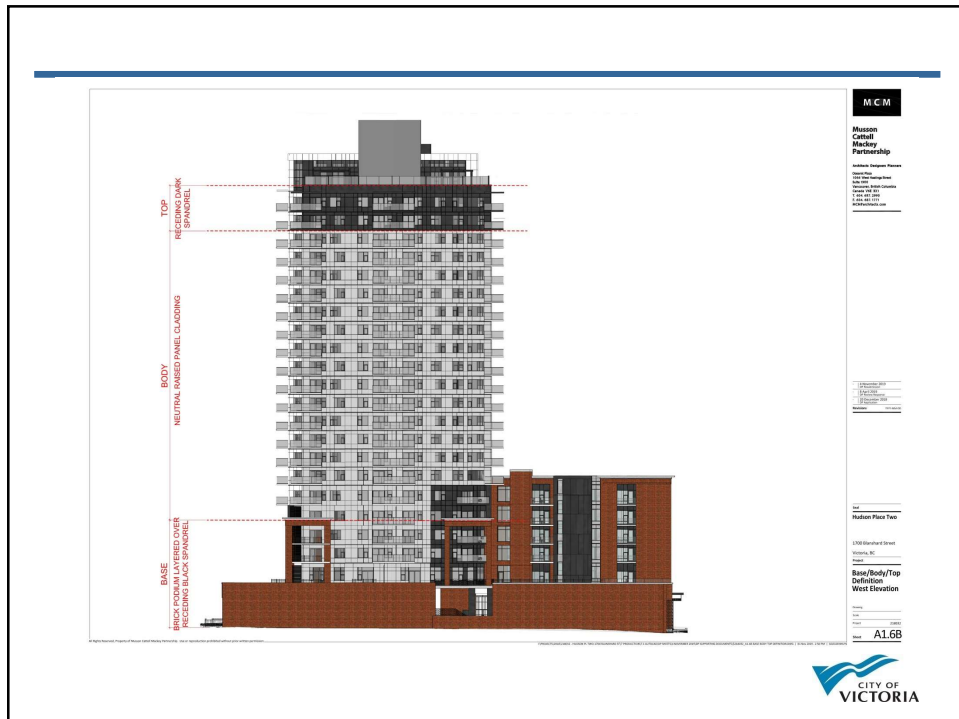
51



52



53



54