

Build Back Victoria

A program to facilitate the temporary use of public space to support business re-opening and recovery in the City of Victoria

June 4, 2020

Committee of the Whole



1

PURPOSE

To seek Council's endorsement of *Build Back Victoria* a program that will provide temporary use of public space to support business re-opening and recovery from COVID-19

The content of this presentation covers agenda items and motions contained in Appendix E



2

INTRODUCTION

- As businesses take steps to get back to work safely, the City is doing what it can to support their re-opening and recovery.
- We are committed to working collaboratively to deliver bold solutions that enable temporary business operations in public space



3

OBJECTIVES

- **Practical, achievable and expedited solutions**
 - “Bureaucracy light”
- Align with **Public Health Officer recommendations** on physical distancing
- Ensure **safety** and **accessibility** of public space
- Consider city wide needs - take into account **equity across the programs, neighbourhoods and business types**



4

PRINCIPLES

- **Applicant-driven**
- **Nimble / flexible solutions** with a commitment to implement, learn and adapt
- **Acknowledge the value of space** but suspend the fees
- **Build on existing processes and insights**
- Find opportunities to **elevate and animate with the arts** and support **vibrant streetscapes**
- Balance **needs of residents and businesses**



5

KEY CONSIDERATIONS

Prioritize safety and accessibility

- Provide 2 - 3 meters of clear travel space
- Address access for emergency response, delivery vehicles, and transit

Acknowledge trade-offs and difficult decisions

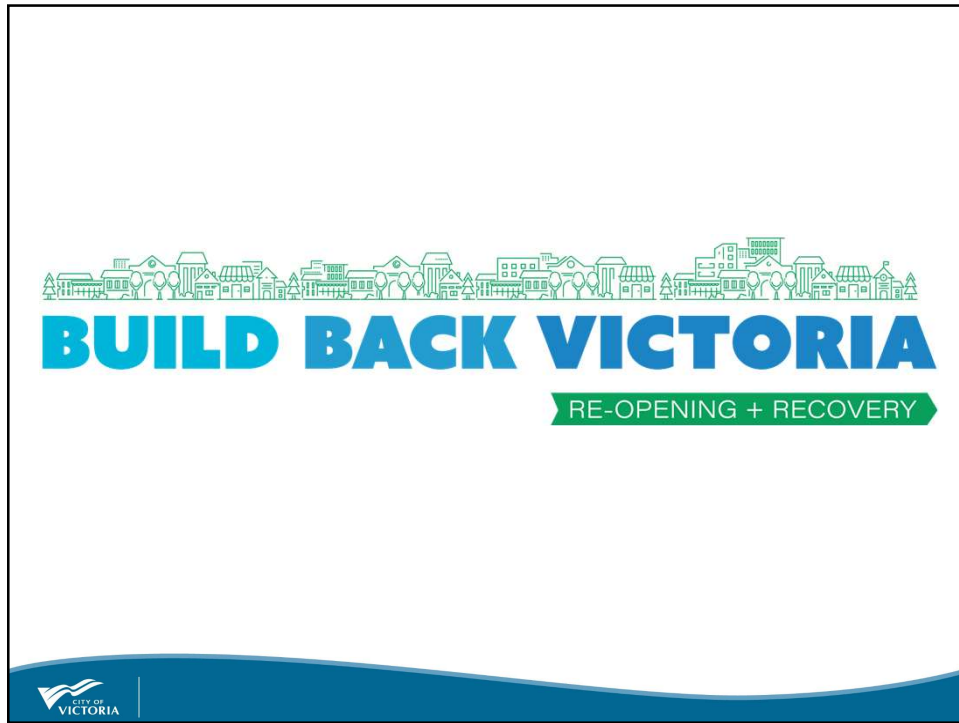
- Private use of public space
- Access to parking vs supporting business operations
- Revenue loss for City
- Traffic circulation impacts
- Practical needs for commercial loading zones, transit stops, accessible stalls, 20 minute meters
- Existing business licensing and regulatory compliance

Recognize changing needs of businesses

- Through different phases of recovery and potential second wave of pandemic

A culture of “temporary stewardship” is essential to success

6



7

Build Back Victoria

A suite of solutions for our business community

1. Flex Spaces
2. Temporary Patios
3. Curbside Loading Zones
4. Plazas and Squares
5. Business in Parks
6. Mobile Vendors
7. Street & Lane Closures including the Government Street Pedestrian Priority Project

The image shows a slide titled 'Build Back Victoria'. The title is in a large, bold, blue sans-serif font. Below the title, there is a horizontal line. Underneath the line, there is a paragraph of text: 'A suite of solutions for our business community'. Below this paragraph is a numbered list of seven items. The list items are: 1. Flex Spaces, 2. Temporary Patios, 3. Curbside Loading Zones, 4. Plazas and Squares, 5. Business in Parks, 6. Mobile Vendors, and 7. Street & Lane Closures including the Government Street Pedestrian Priority Project. At the bottom left of the slide, there is a small logo for the 'CITY OF VICTORIA' featuring a stylized wave and the text 'CITY OF VICTORIA'.

8

SIMPLE & STREAMLINED

Bizhub.Victoria.ca

Expedited review, approvals and implementation

A collaborative process to review applications and find solutions *with* businesses



9

FLEX SPACES

- **Flexible zones to support diverse business needs**
 - On-street, sidewalks, boulevards, in plazas and squares
 - Accommodates retail, services, queuing, displays, daily seating
- **Simple materials provided by the City**
 - Blue cones and parking meter hood, if applicable
- **Ability to adapt the space and use(s) each day**
 - Set-up during business hours and managed by applicant
 - Up to 2 parking stalls per business
 - On-street zones revert back to parking after hours
 - Encourage businesses working together



10

TEMPORARY PATIOS

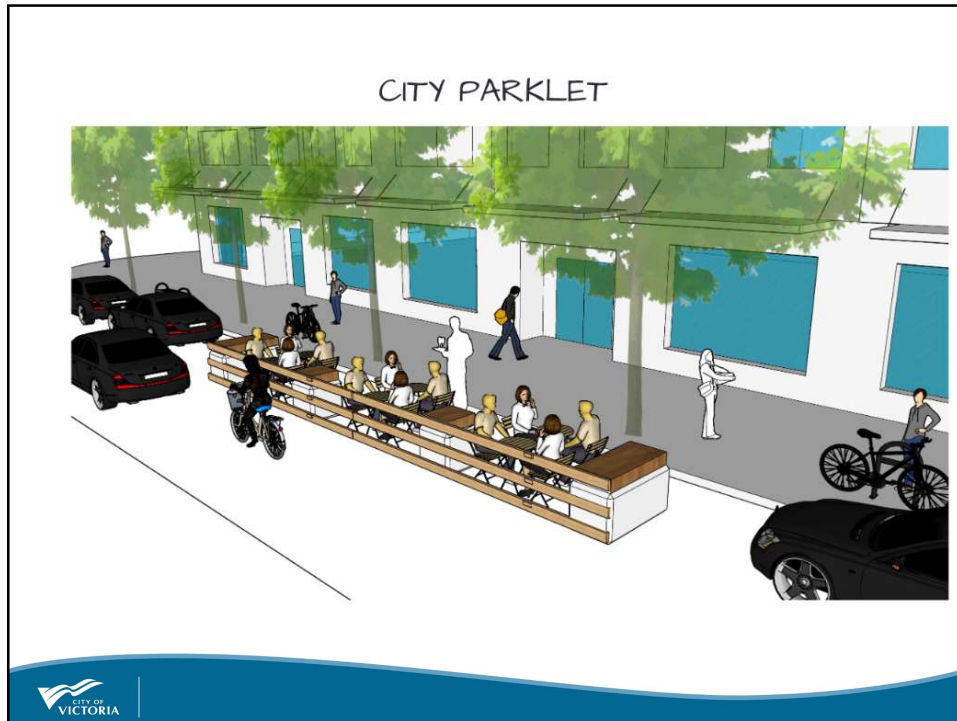
- **Restaurant and café patios on sidewalks, boulevards, on-street, places and/or squares**
- **Start with Basic Flex Zone**
- **Ability to upgrade to an enhanced Patio**
 - Patio remains in place 24/7
 - Design guidelines that support aesthetics and safety
 - Host populates the space with semi-permanent furniture, planters, lighting etc.
 - Option for purchase of an off the shelf “parklet” from City at cost recovery rate



11



12



13

CURBSIDE LOADING

- On-street dedicated stall to support **non-commercial loading, customer pick-up and/or drop off**
- Complementary to existing commercial loading zones and 20 minute meters
- Supports loading at a **business frontage or for a block**
 - Does not have to be exclusive to one business or loading use
 - Space remains in effect 24/7



14

BUSINESS IN PARKS

- Targeted primarily at health, recreation, fitness, and wellness businesses who want to operate in Parks
 - Beacon Hill Park excluded
- Parks continue to remain open and accessible to the public
- Guidelines for maintaining distance from pathways, trees and significant landscape features
- Sports fields will follow the traditional guidelines and application processes.



15

MOBILE VENDING

- Dedicated stalls in pre-determined locations intended for Food Trucks and Bicycle Vendors
 - Stalls renewed on 2 week basis to encourage diversity and turn over
 - Reserved stalls from 7am – 7pm
- Intended to be minimum distance away from other similar brick and mortar businesses
- Self sufficient – no City provided power, water or waste services



16

TEMPORARY ROAD CLOSURES

- Adapting a current program for **business or community-initiated street closures or travel lane restrictions**
- Intended to support business needs or community-building activities
 - Requires 80% support of adjacent businesses and residents
- Program accommodates **closures for different length of times**
- Application review focuses on **traffic control measures and circulation impacts**



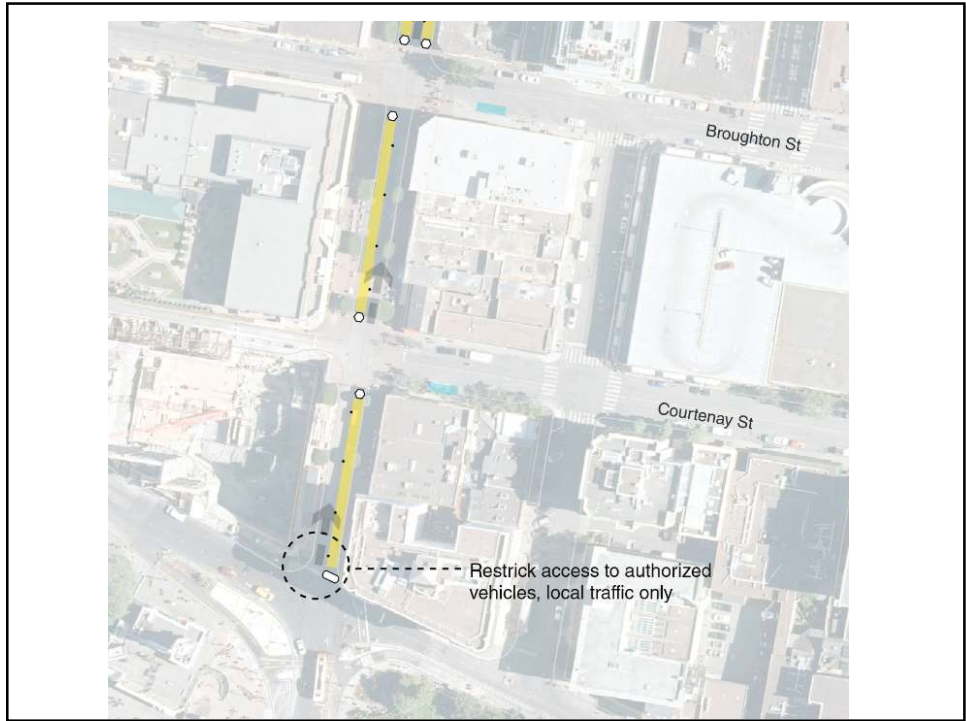
17

GOVERNMENT STREET Pedestrian Priority Zone

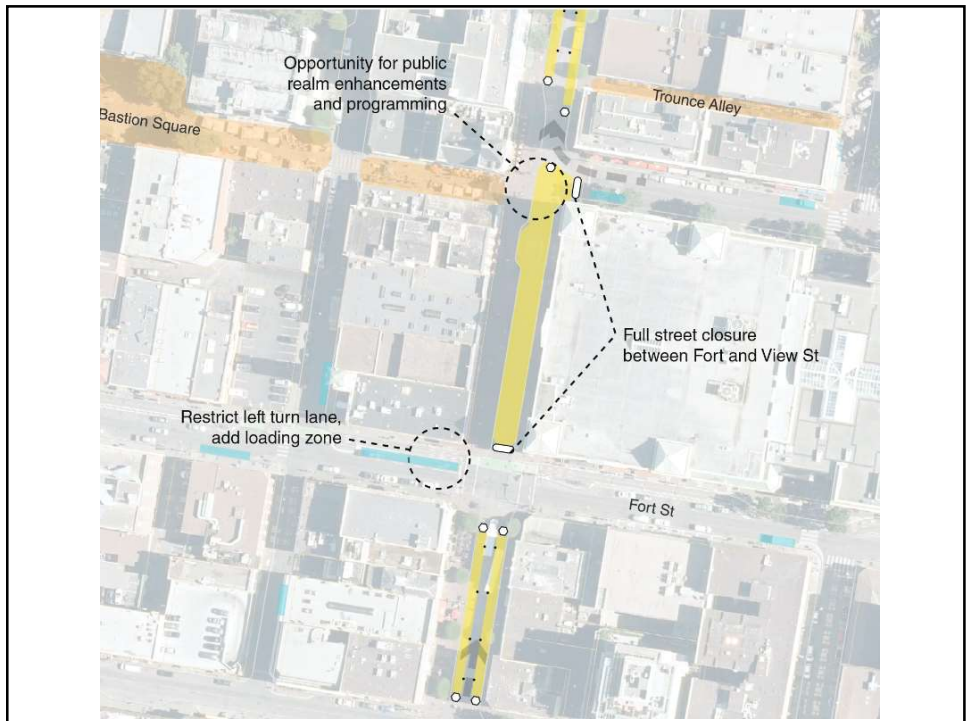
- Proactively brought forward by staff
 - Opportunity to implement Council Strategic Priority and designed with considerations from businesses and DVBA
- Represents **step-change in the downtown streetscape environment**
- Features multiple blocks of **flexible on-street commercial areas** and a central zone with a **full-street closure for maximum use of public space**



18



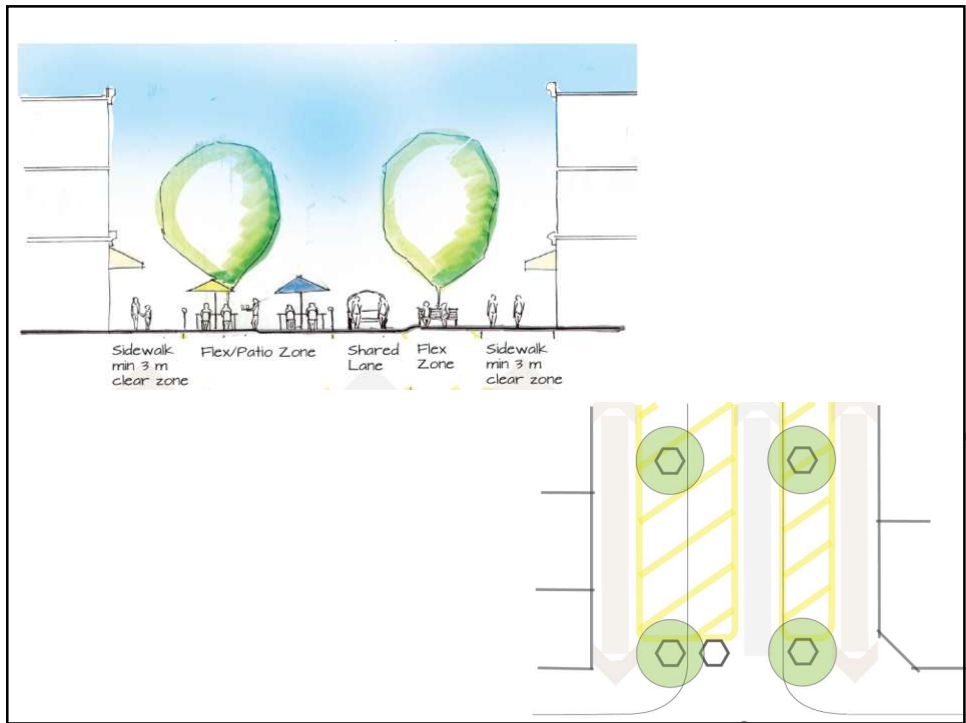
19



20



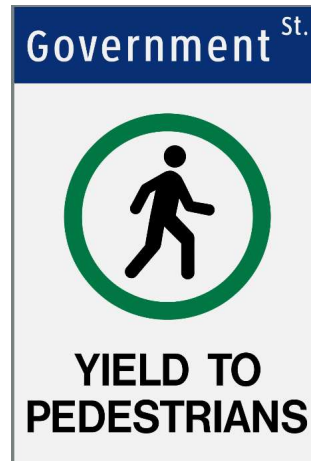
21



22

GOVERNMENT STREET

- **Pedestrian priority environment** with accessible sidewalks
 - Expands successful pedestrian zones in Bastion Square and Trounce Alley
- **Facilitates delivery** and business servicing needs
- Ability to **expand and adapt** as required
- Can be animated through **Arts & Cultural Activities**



23

EDUCATION & MONITORING

- **Comprehensive communications**
 - Website, social media, business hub, Chamber, DVBA, neighbourhood team
- Fostering a culture of “temporary stewardship” and encouraging collaboration among businesses
- Enforcement through Bylaw Services, Parking Services and Right of Way management
- Educate first; ability to rescind permits if required



24

TIMELINES

Pending Council approval, implementation would begin Monday, June 8, 2020:

- Communications and Information Sharing with Businesses
- Applications open for Programs
- Government Street initiated

Over the coming weeks and months, staff will review and adapt programs and report back to Council as required



25

SUMMARY

- People need to feel safe for economic recovery to be successful
- The City is proposing practical, achievable and expedited temporary solutions to allow businesses to use public spaces
- Our goal is to balance different needs while maintaining Provincial Health guidelines, road safety, accessibility and liveability for our community



BUILD BACK VICTORIA

RE-OPENING + RECOVERY

26