

1

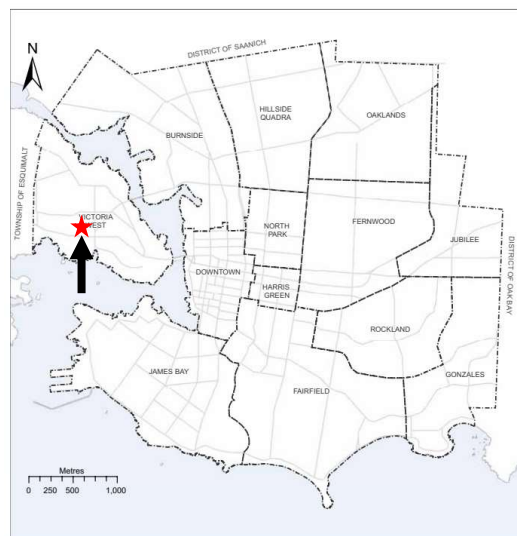
# Heritage Designation Application No. 00189 404 Henry Street



1

## 404 Henry Street – HD No. 00189

2



MAP 18  
Neighbourhoods

Neighbourhood Boundary



2

### 404 Henry Street – HD No. 00189

3



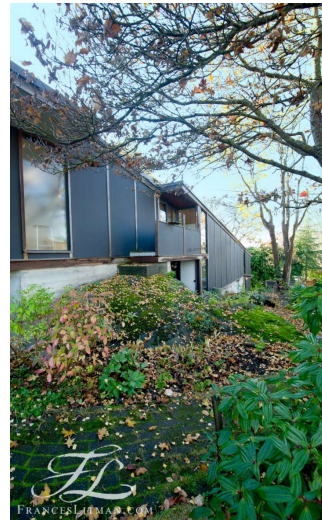
3

### 404 Henry Street – HD No. 00189

4

#### History

- Designed by architect Alan Hodgson for his family
- Constructed in phases between 1962 and 1989
- An L-shaped plan that frames the edges of the site and descends down a rock formation in the middle in a series of volumes
- Cantilevered single storey design



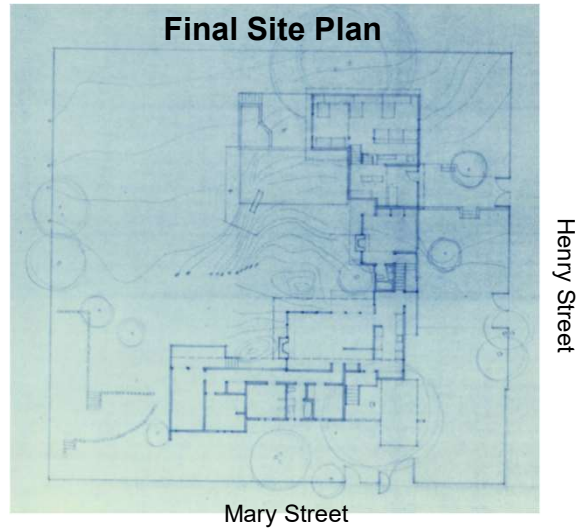
Henry Street Elevation



4

404 Henry Street – HD No. 00189

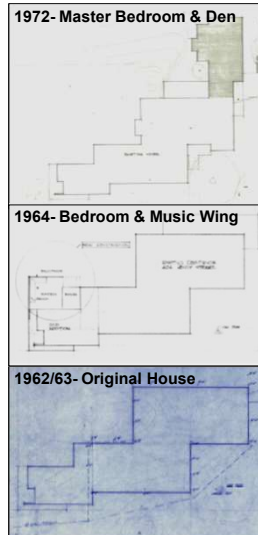
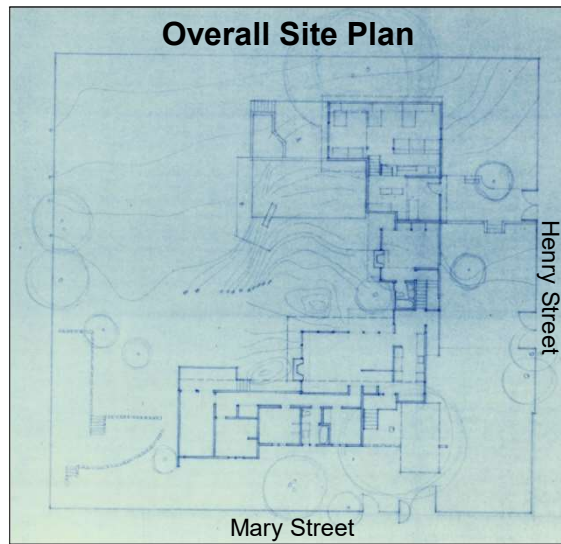
5



5

404 Henry Street – HD No. 00189

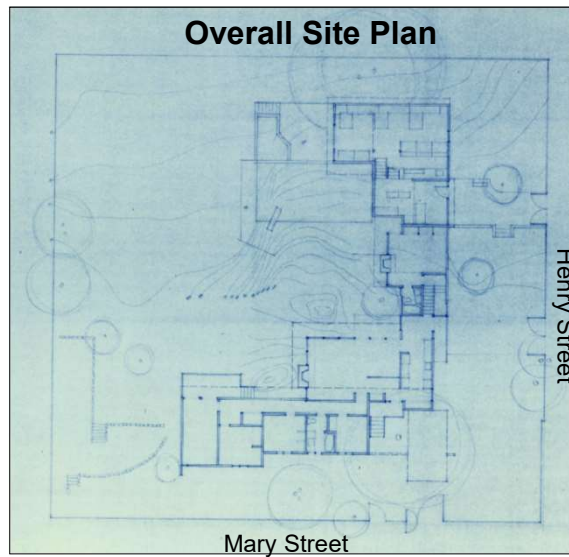
6



6

## 404 Henry Street – HD No. 00189

7



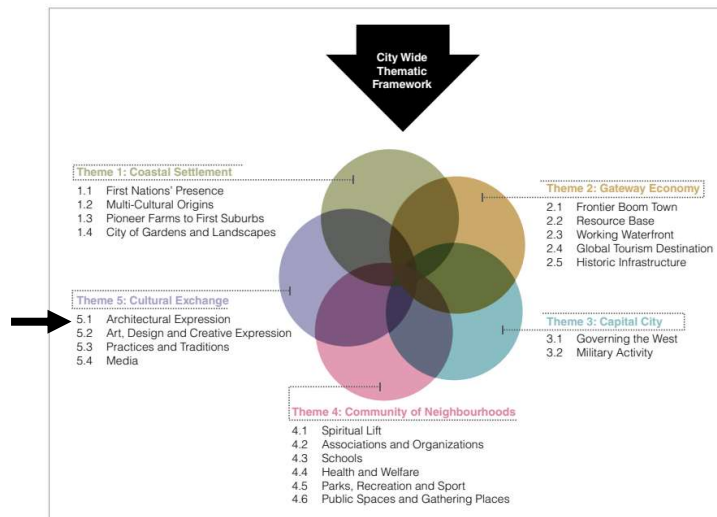
**1976-89- Deck, Garden  
Patios, Den & Studio  
Addition**



7

## 404 Henry Street – HD No. 00189

8



8

## 404 Henry Street – HD No. 00189

9

### Designation Assessment

A local government may...designate real property ...as protected under this section (611) if the local government considers that...

(a) the property has **heritage value** or **heritage character**.

**Designation Assessment:** Does the property have **heritage value** or **heritage character**?

**Heritage Value:** historical, cultural, aesthetic, scientific or educational worth or usefulness of property or an area.

**Heritage Character:** the overall effect produced by traits or features which give property or an area a distinctive quality or appearance.

(Local Government Act, Section 611)



9

## 404 Henry Street – HD No. 00189

10

### Heritage Value

- Cultural and Historical Value for association with the career of Alan Hodgson
- Aesthetic value as a representative West Coast Modern design that respects nature and indigenous materials

### Heritage Character (CDE's)

- Inward-facing windows,
- 8'4" design module using marine grade plywood and cedar
- Massing as a series of connected architectural volumes
- Structural design
- Economical and innovative exterior design



McLaurin Building, UVIC, Alan Hodgson



Parliament Building Restoration 1970s

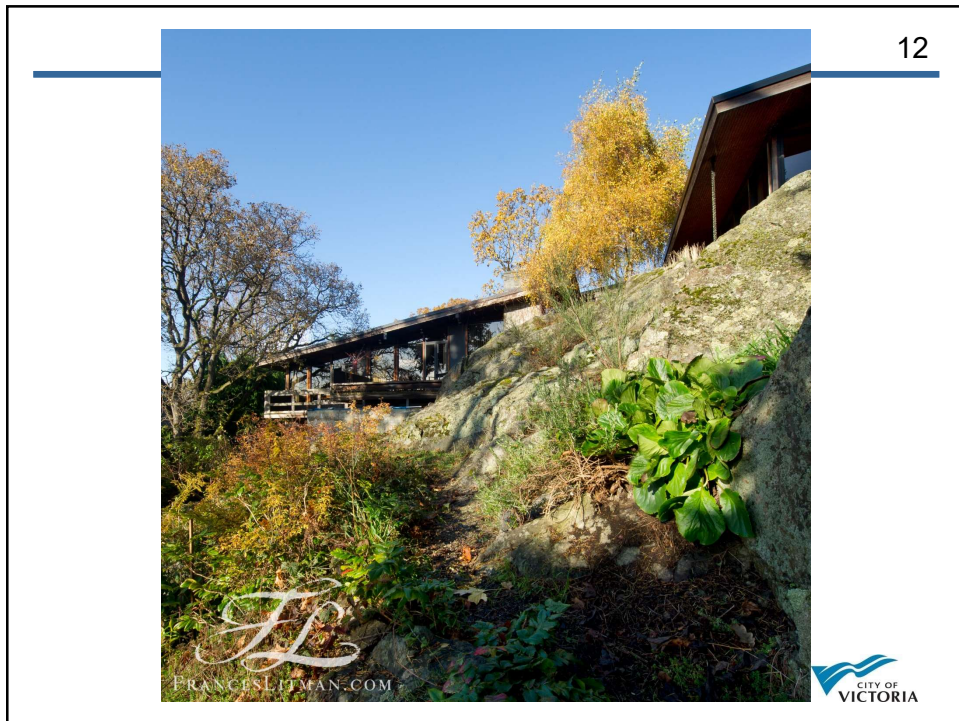


10





11



12

13

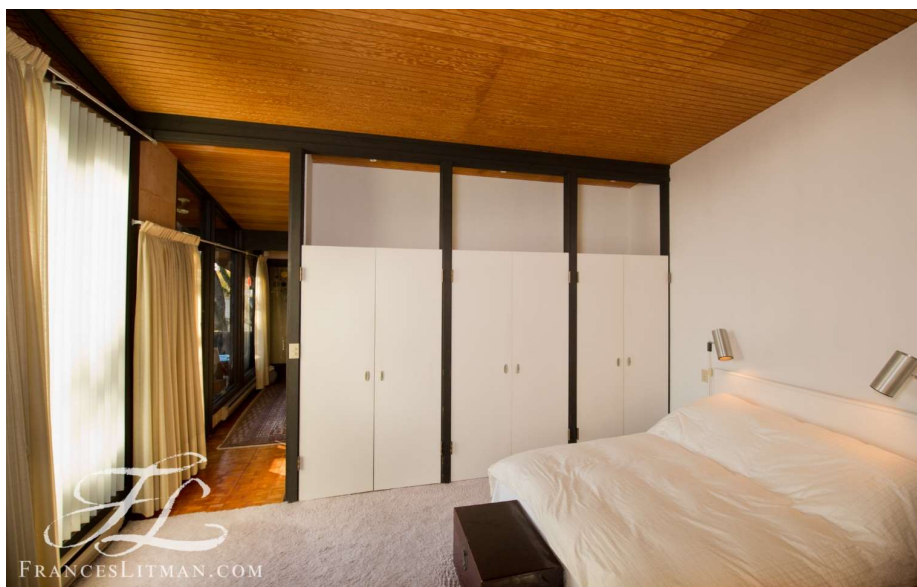


**Living Room**



13

14



**Master Bedroom**



14



15