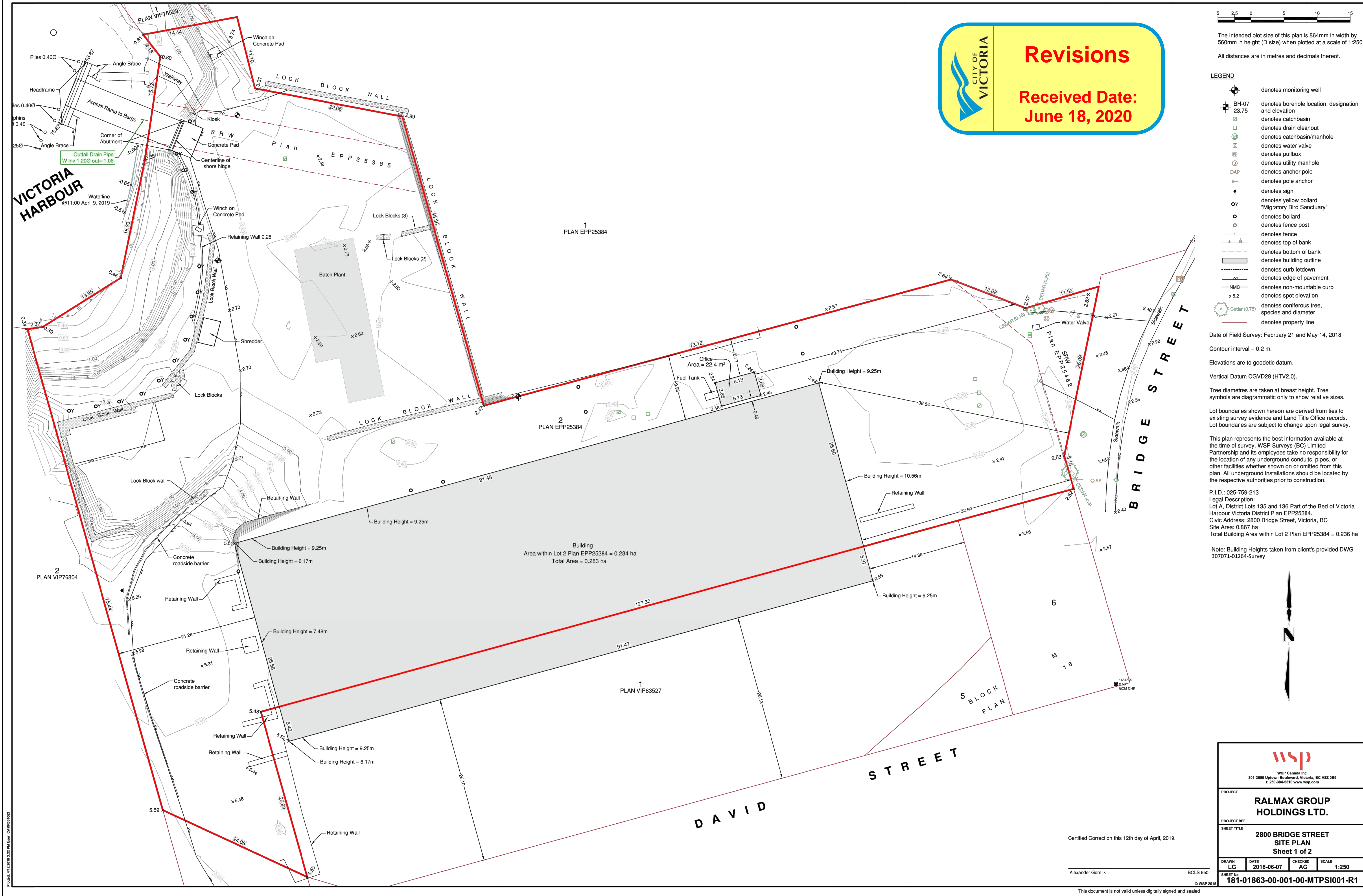
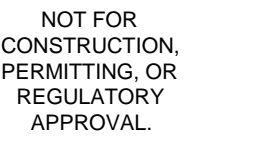


Rev. #	Date





2800 BRIDGE ST
VICTORIA, BC - CANADA

TRIO READY-MIX

MAR 2020

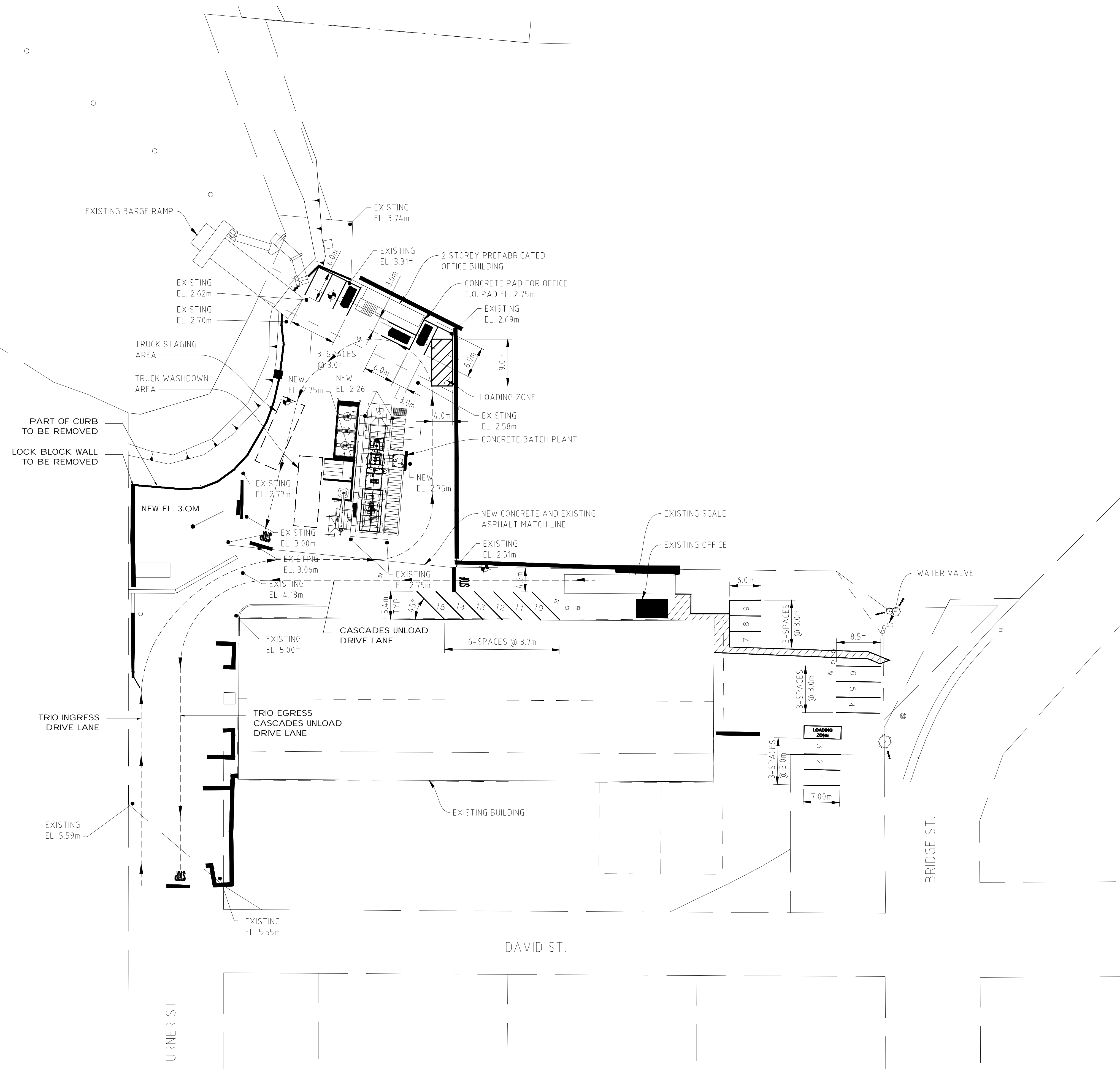
OWN BY	JLH
BOOKED BY	RO
SUBJECT No.	TRM-019PM021
REMARKS	

ev. #	Date

THE LAYOUT

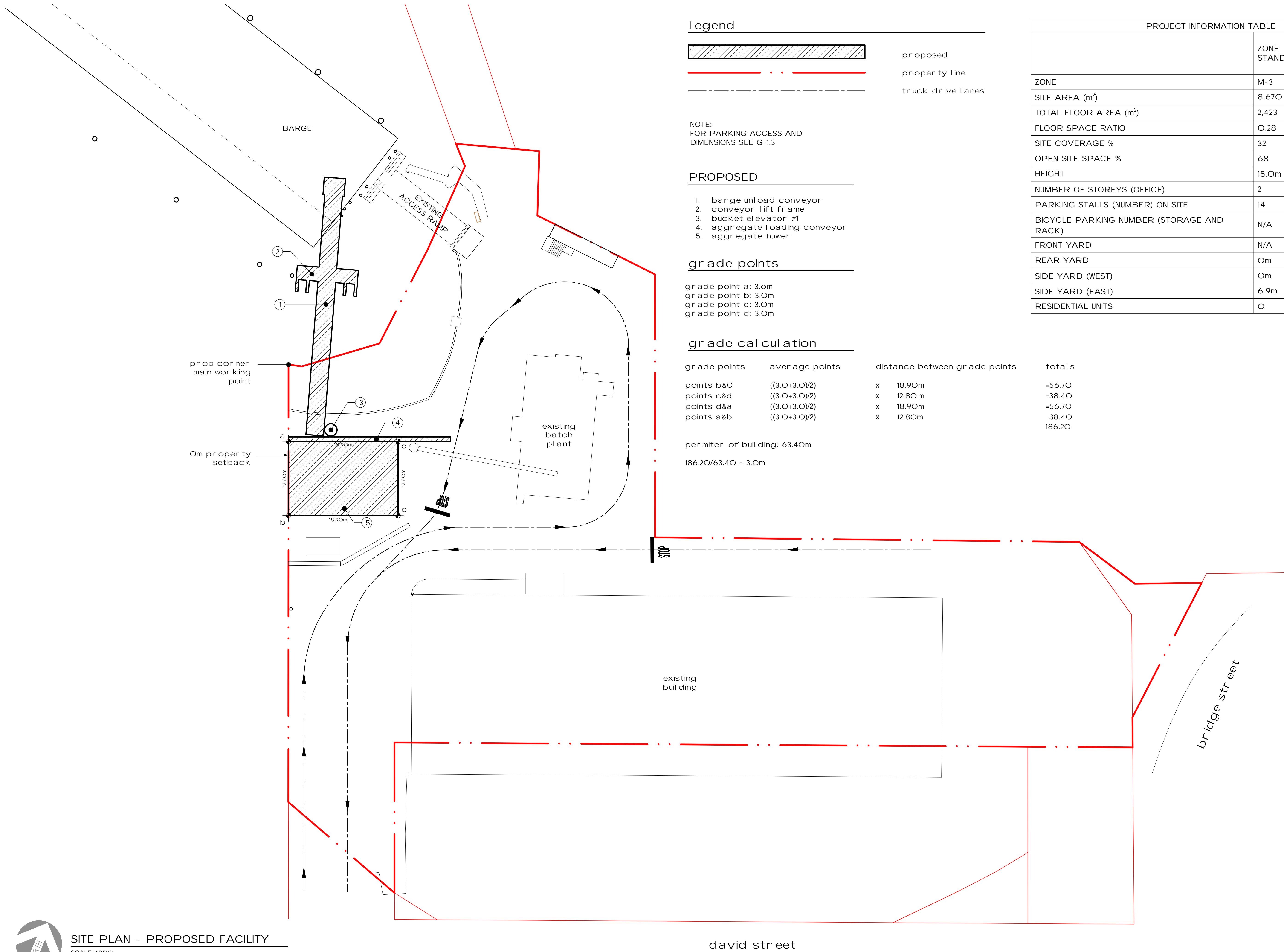
G

G-1.3



SITE PLAN - PROPOSED

SCALE: 1:400



PROJECT INFORMATION TABLE		
	ZONE STANDARD	PROPOSAL - IF DIFFERENT FROM ZONE STANDARD
ZONE	M-3	-
SITE AREA (m²)	8,670	-
TOTAL FLOOR AREA (m²)	2,423	-
FLOOR SPACE RATIO	0.28	-
SITE COVERAGE %	32	-
OPEN SITE SPACE %	68	-
HEIGHT	15.0m	34.83m
NUMBER OF STOREYS (OFFICE)	2	-
PARKING STALLS (NUMBER) ON SITE	14	18
BICYCLE PARKING NUMBER (STORAGE AND RACK)	N/A	-
FRONT YARD	N/A	-
REAR YARD	0m	-
SIDE YARD (WEST)	0m	-
SIDE YARD (EAST)	6.9m	-
RESIDENTIAL UNITS	0	-



SITE PLAN - PROPOSED FACILITY

SCALE: 1:300



NOT FOR CONSTRUCTION, PERMITTING, OR REGULATORY APPROVAL.

PROPOSED MATERIAL STORAGE RECLAIM SYSTEM
2800 BRIDGE ST
VICTORIA, BC - CANADA

TRIO READY-MIX

DATE
11 JUNE 2020

DRAWN BY: JH
CHECKED BY: RO
PROJECT No.: TRM-019PM021
REVISIONS:

Rev. #	Date

SHEET TITLE
SITE LAYOUT



ALL RIGHTS RESERVED BY PA-PO INDUSTRIAL SYSTEMS. THIS DRAWING IN DESIGN AND DETAILS IS THE PROPERTY OF PA-PO AND MUST NOT BE USED EXCEPT IN CONNECTION WITH WORK BY PA-PO. ALL RIGHTS OF DESIGN OR INVENTION ARE RESERVED. DIMENSIONS AS INDICATED.

G-1.5

SEISMIC AND WIND LOADS NOT INCLUDED

POINT B - CENTER OF 3.05mX3.05m RECEIVING HOPPER - DISCHARGE
POINT OF BARGE UNLOADING CONVEYOR BEARING LOAD/COLUMN 35
KIPS - EIGHT (8) 25.4mm DIAMETER ANCHOR BOLTS (101.6mm
PROJECTION) UPLIFT LOAD ON COLUMNS ON 1 AND 4 - 35,000#

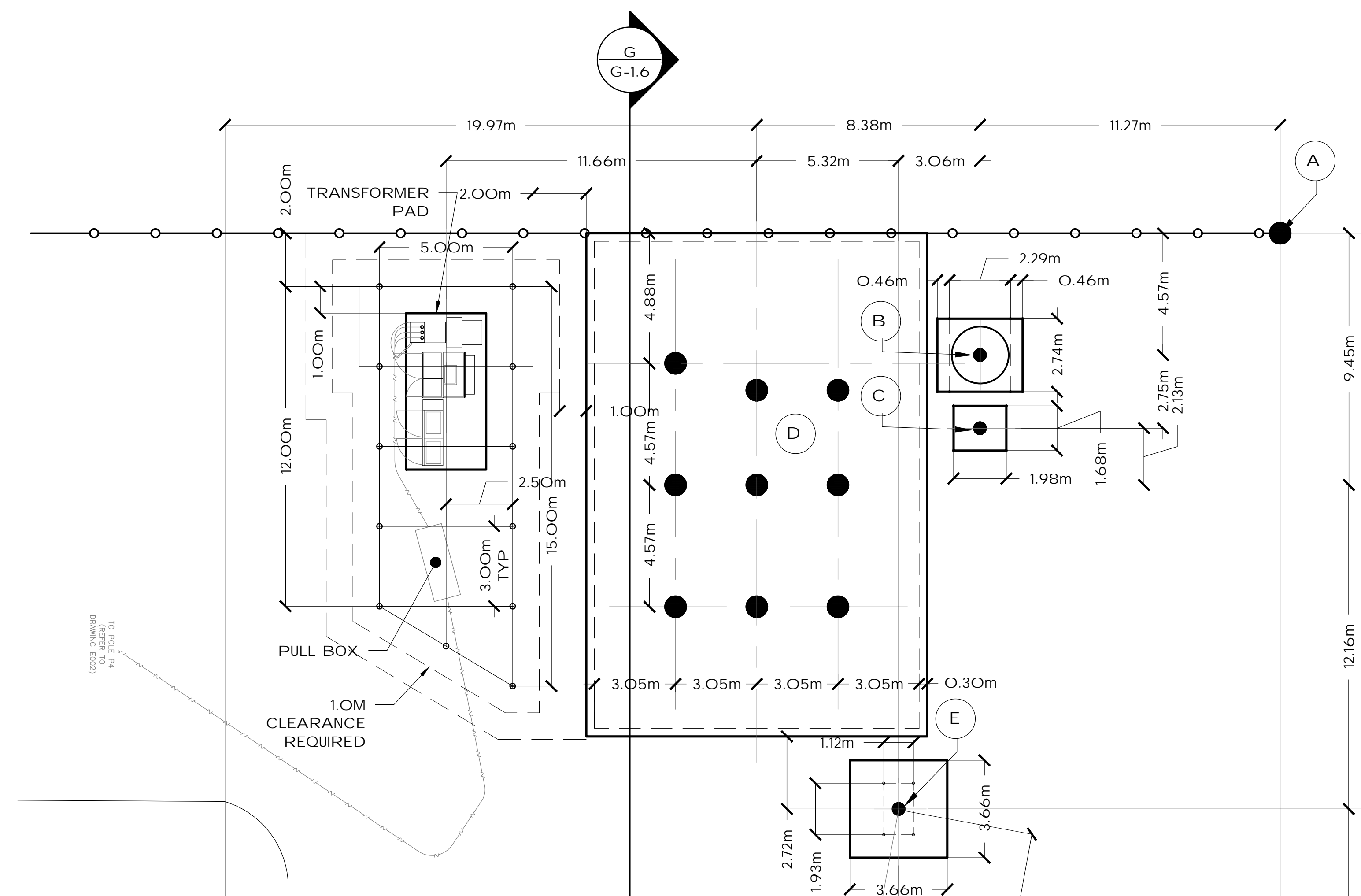
POINT C - 800 METRIC TON PER HOUR BUCKET ELEVATOR. BEARING
LOAD - 75 KIPS - FOUR (4) 38.1mm DIAMETER ANCHOR BOLTS (101.6mm
PROJECTION) UPLIFT AND HORIZONTAL LOADS - NIL

POINT D - 7000 METRIC TON 3 COMPARTMENT LOAD OUT BIN.
BEARING LOAD - 16,100 KIPS (15,400,000# AGGREGATE +
700,000# STEEL) ANCHOR BOLTS - 19.05mm DIAMETER WITH 76.2mm
PROJECTION - C/C TBD - FIELD DRILL AND EPOXY

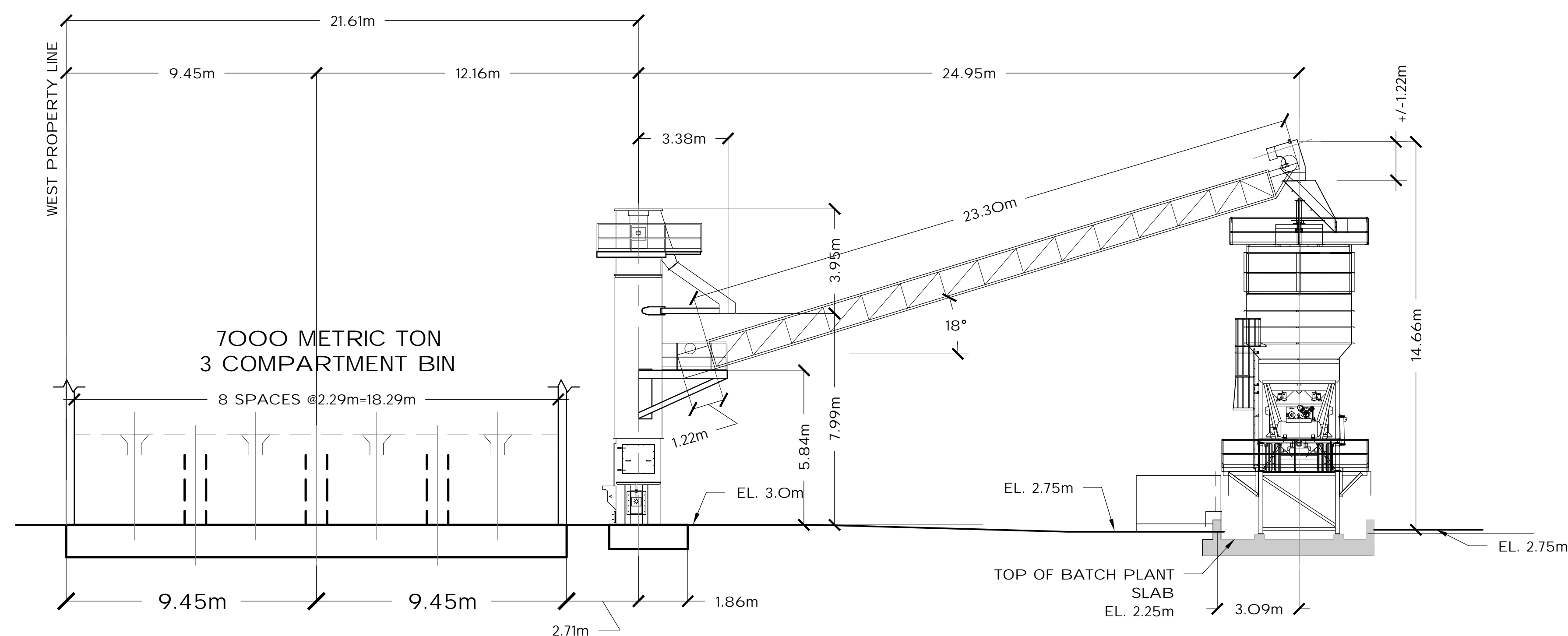
POINT E - 400 METRIC TON PER HOUR BUCKET ELEVATOR. BEARING
LOAD - 40 KIPS

POINT F - HEAD SECTION SUPPORT FOR .76m TRANSFER CONVEYOR.

NOTE: TOP OF ALL CONCRETE FOOTINGS @ ELEVATION OF 3.0 METERS.



SCALE: 1:125



FOOTING:
#2 BUCKET ELEVATOR
3.66mX3.66mX.91m DEEP
R/W 2Om @ 3O4.8mm EW-TOP &
BOTTOM
SIX (6) 19.O5mm ANCHOR BOLTS
1O1.6mm PROJECTION

G SECTION
SCALE: 1:125

SECTION
SCALE: 1:125

NOT FOR
CONSTRUCTION
PERMITTING, OR
REGULATORY
APPROVAL.

PROPOSED MATERIAL STORAGE RECLAIM SYSTEM

2800 BRIDGE ST
VICTORIA, BC - CANADA

TRIO READY-MIX

DATE
30 MAR 2020

DRAWN BY	JLH
CHECKED BY	RO
PROJECT No.	TRM-019PM021
REVISIONS	

Rev. #	Date

SHEET TITLE
FOUNDATION LAYOUT

G

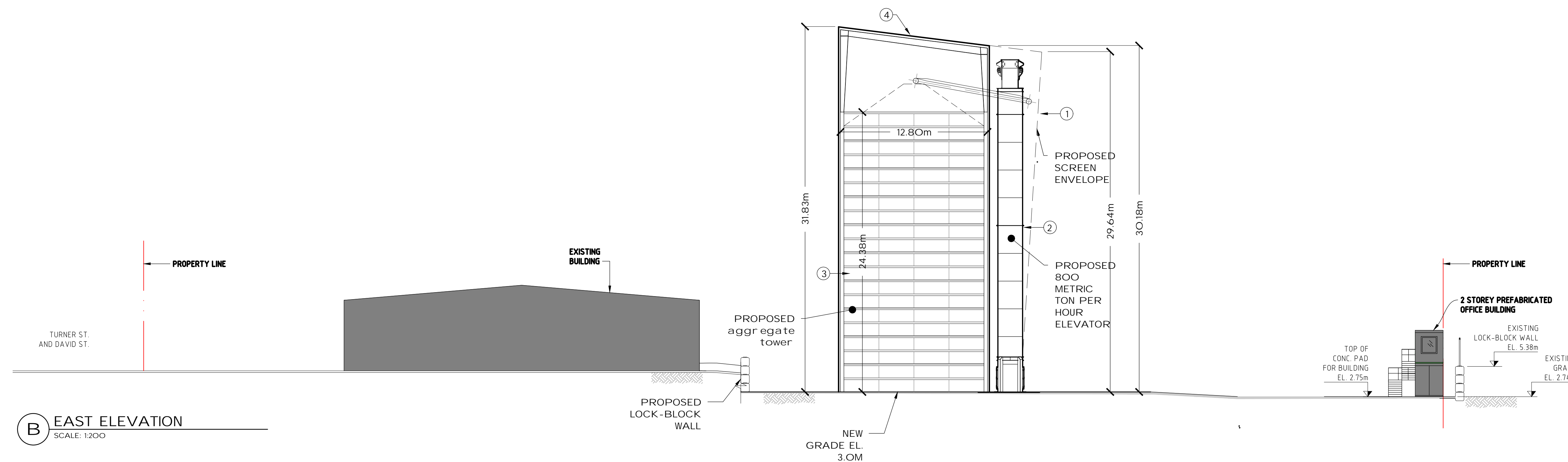
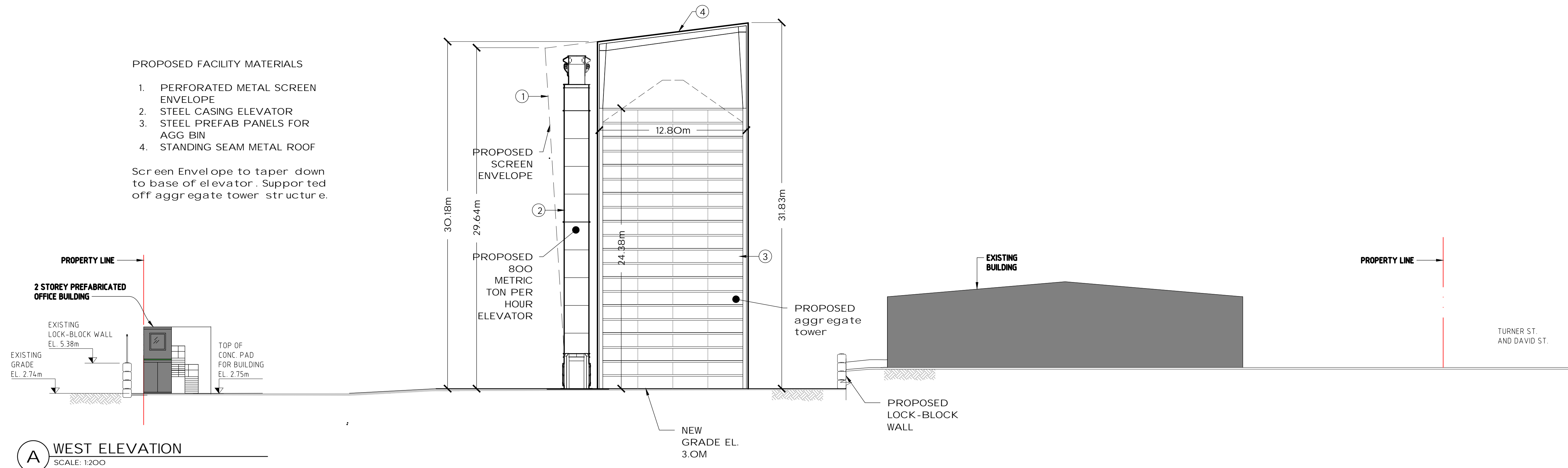
G-1.6

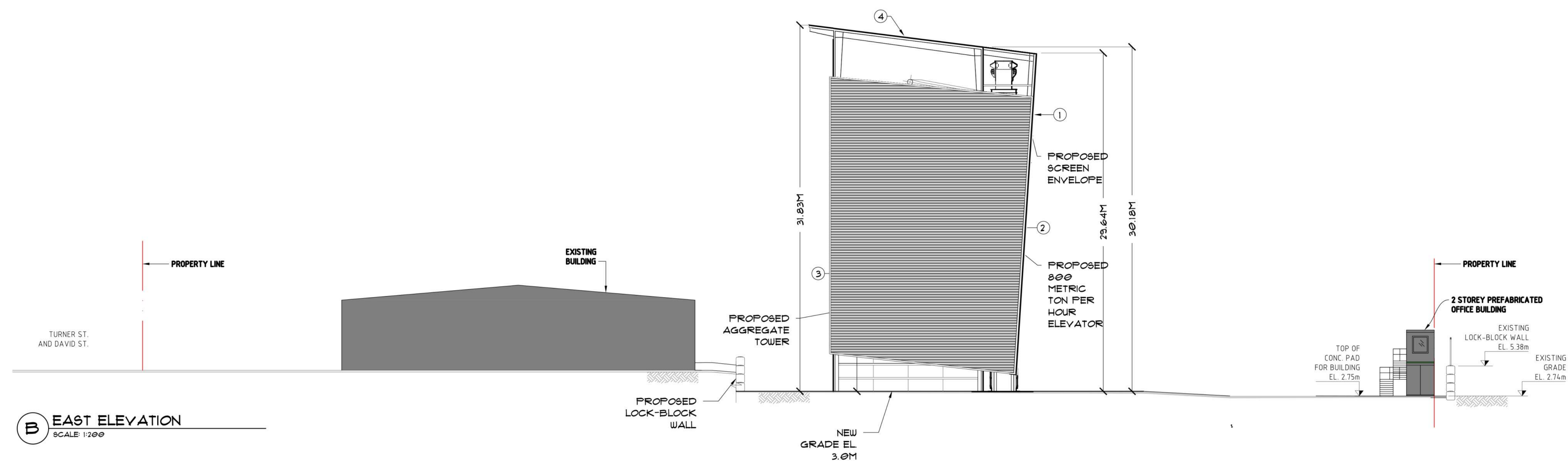
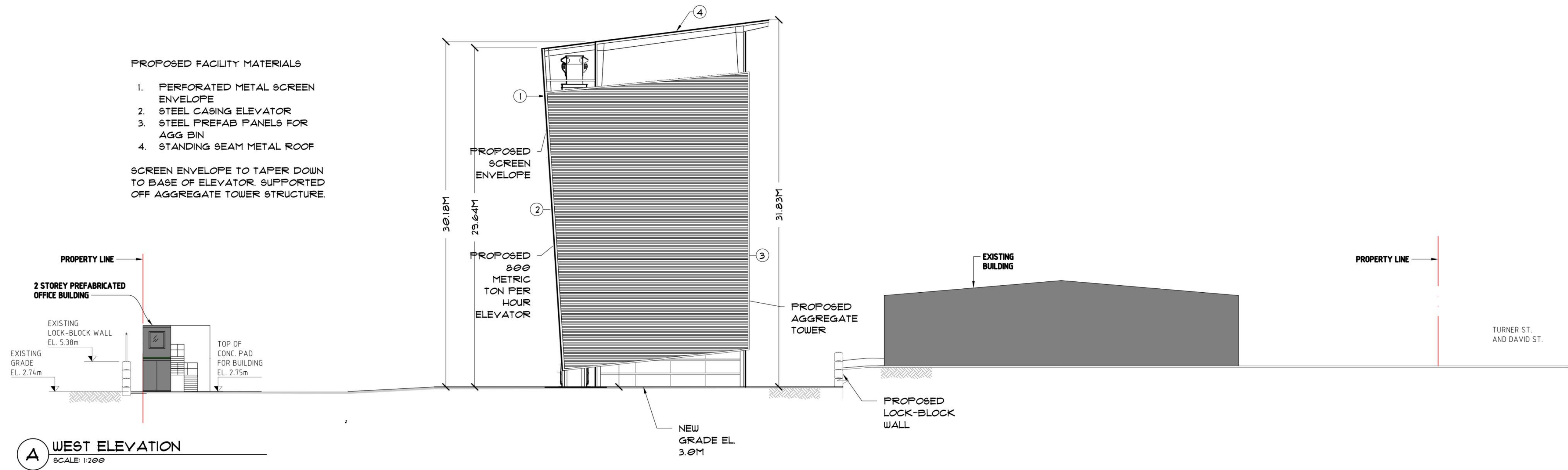
Rev. #	Date

PROPOSED FACILITY MATERIALS

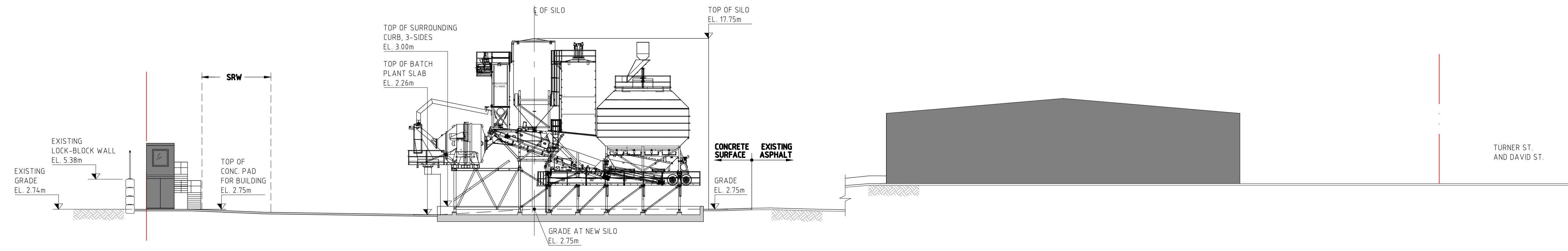
1. PERFORATED METAL SCREEN ENVELOPE
2. STEEL CASING ELEVATOR
3. STEEL PREFAB PANELS FOR AGG BIN
4. STANDING SEAM METAL ROOF

Screen Envelope to taper down to base of elevator. Supported off aggregate tower structure.

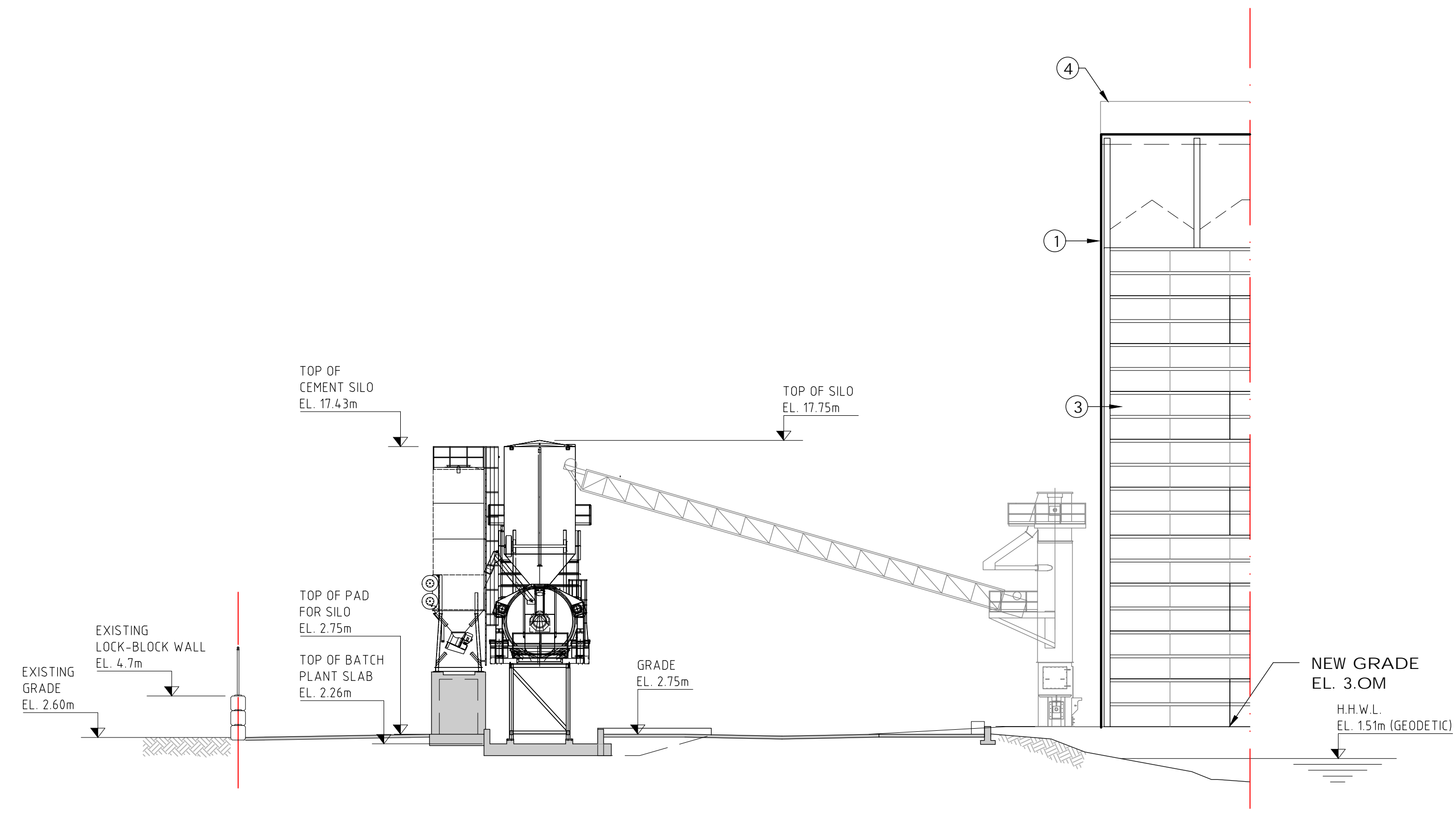




Rev. #	Date



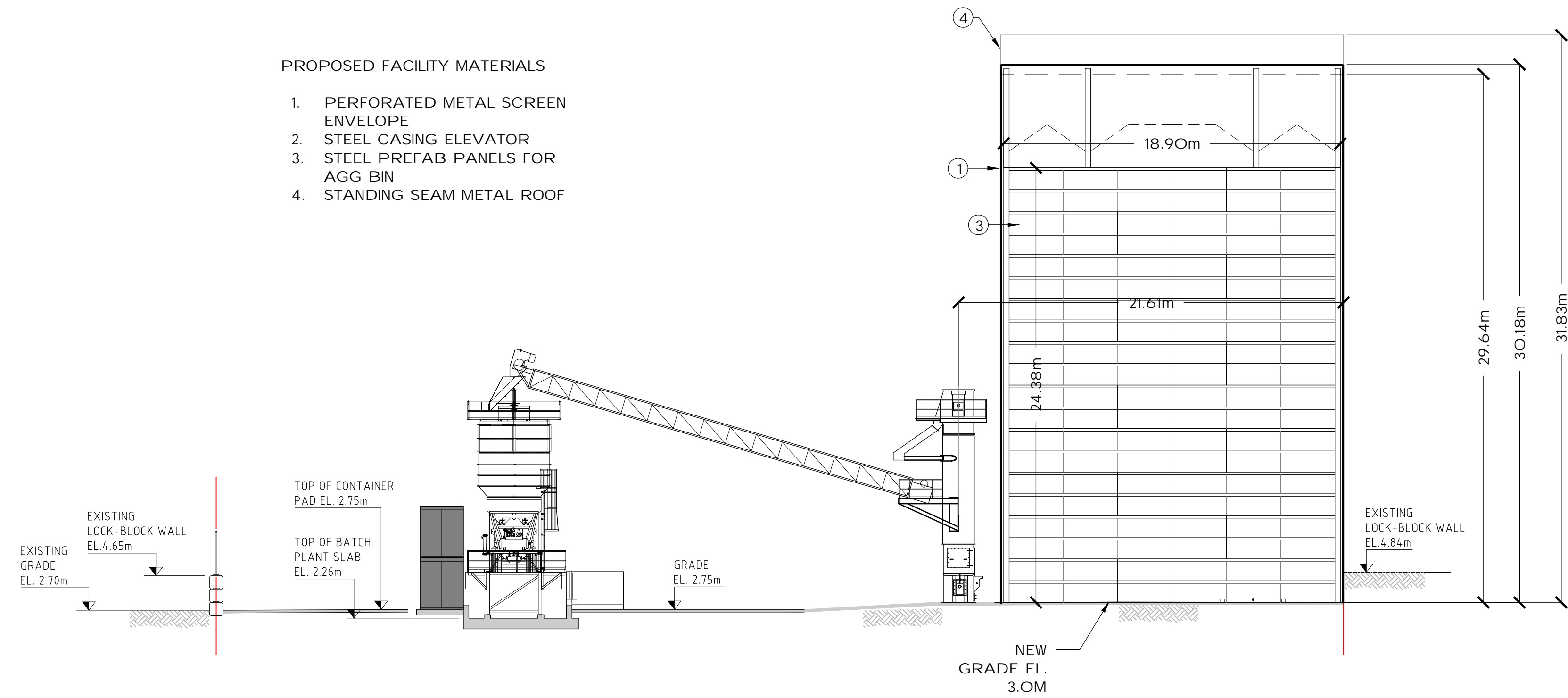
C BATCH PLANT
SCALE: 1:200



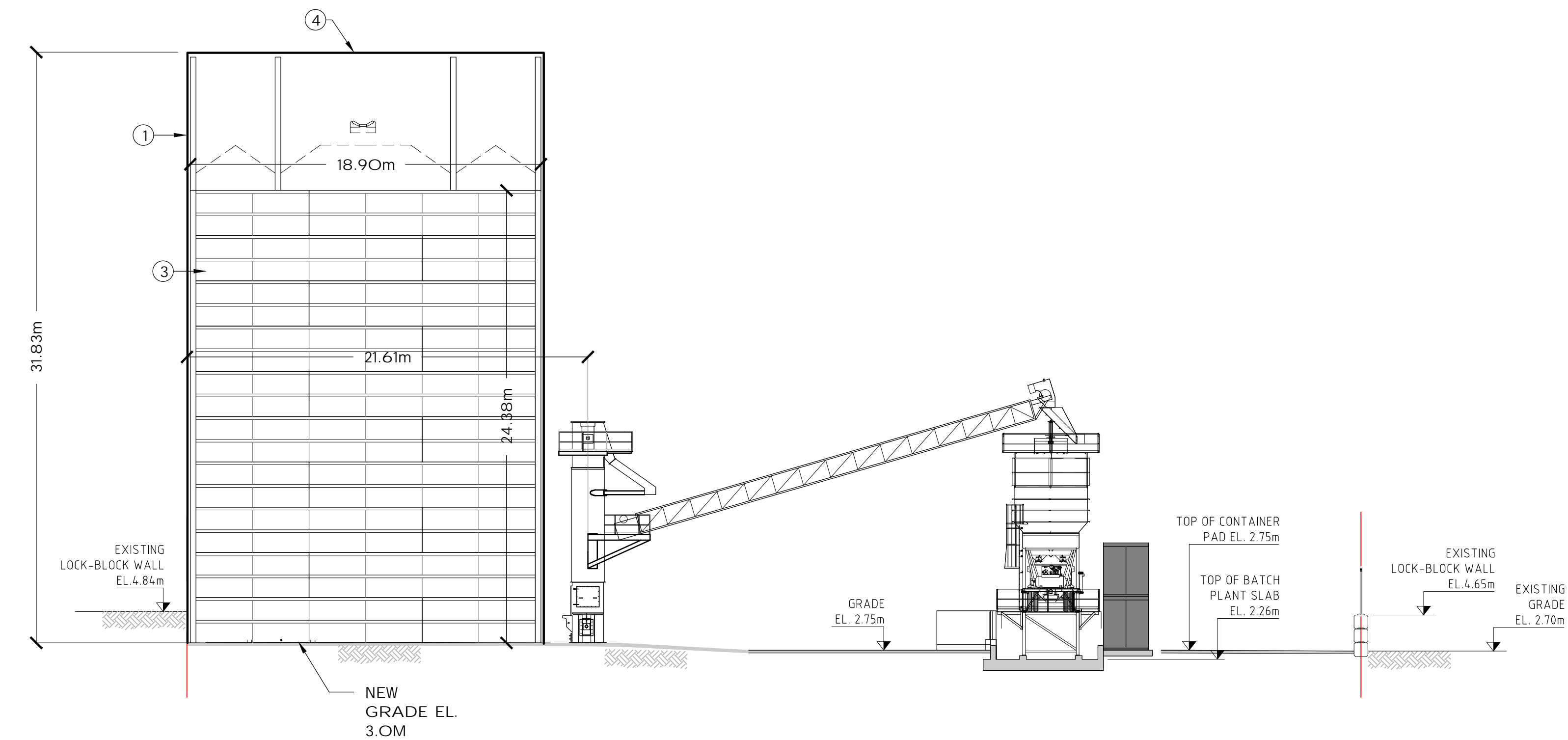
D NORTH ELEVATION
SCALE: 1:200

- PROPOSED FACILITY MATERIALS
1. PERFORATED METAL SCREEN ENVELOPE
 2. STEEL CASING ELEVATOR
 3. STEEL PREFAB PANELS FOR AGG BIN
 4. STANDING SEAM METAL ROOF

Rev. #	Date

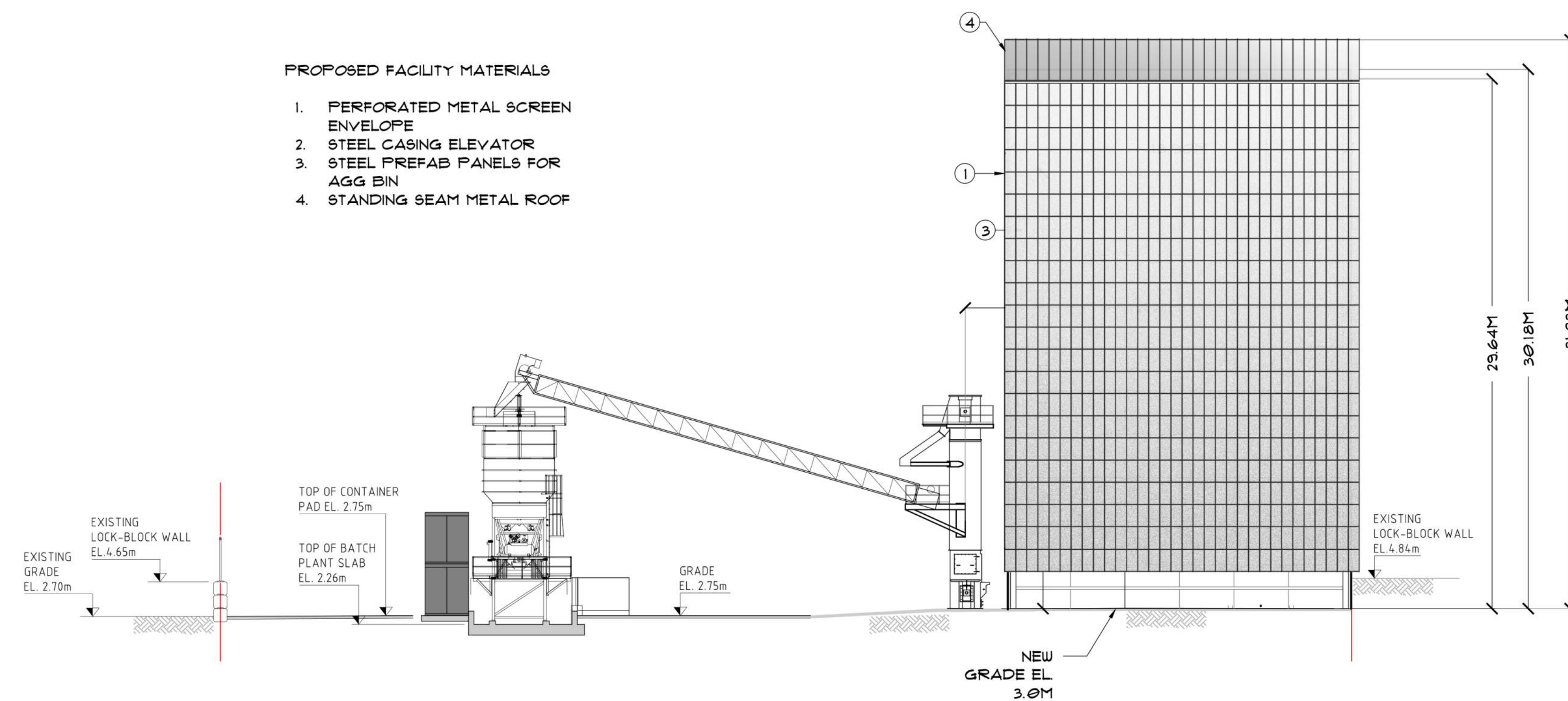


E NORTH ELEVATION
SCALE: 1:200

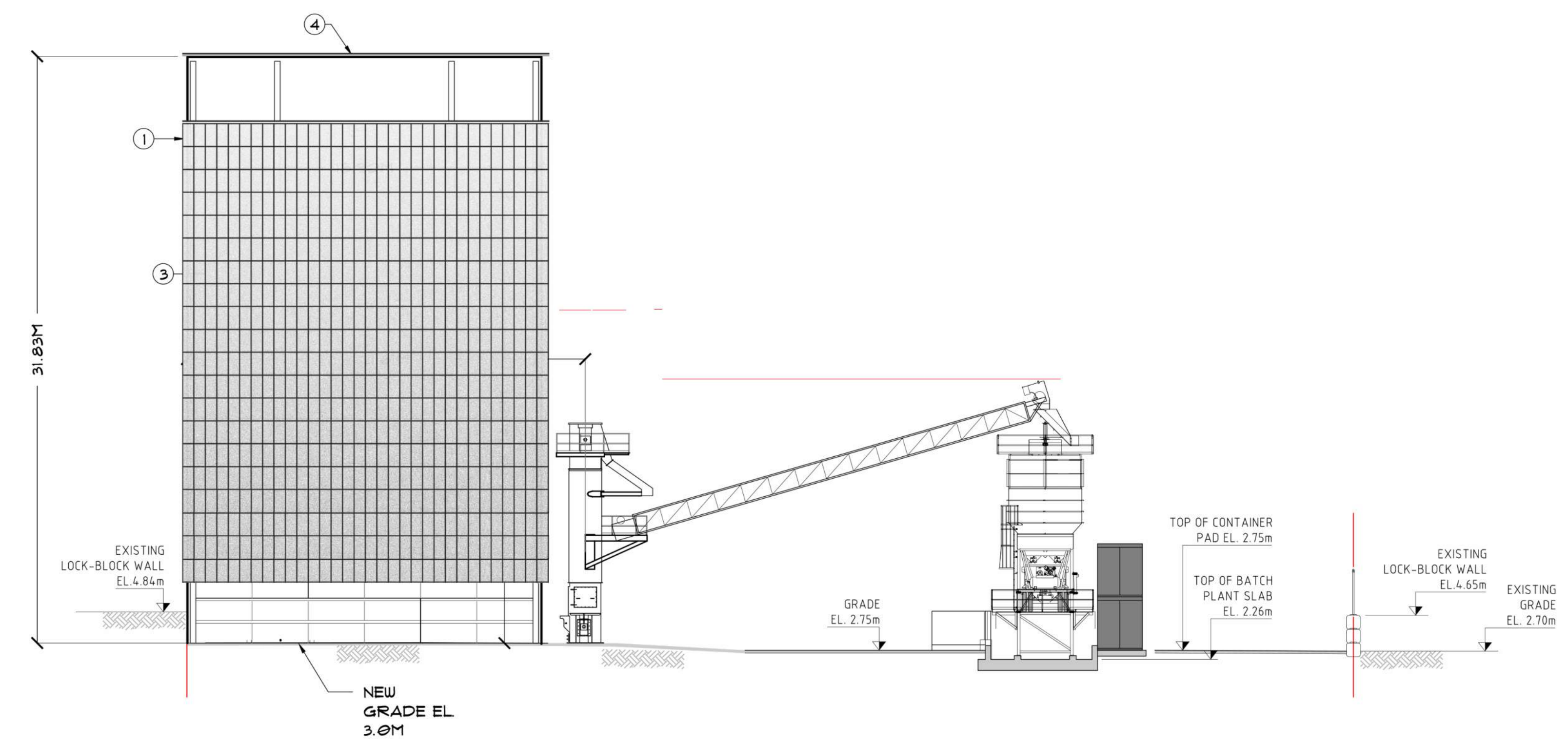


F SOUTH ELEVATION
SCALE: 1:200

Rev. #	Date



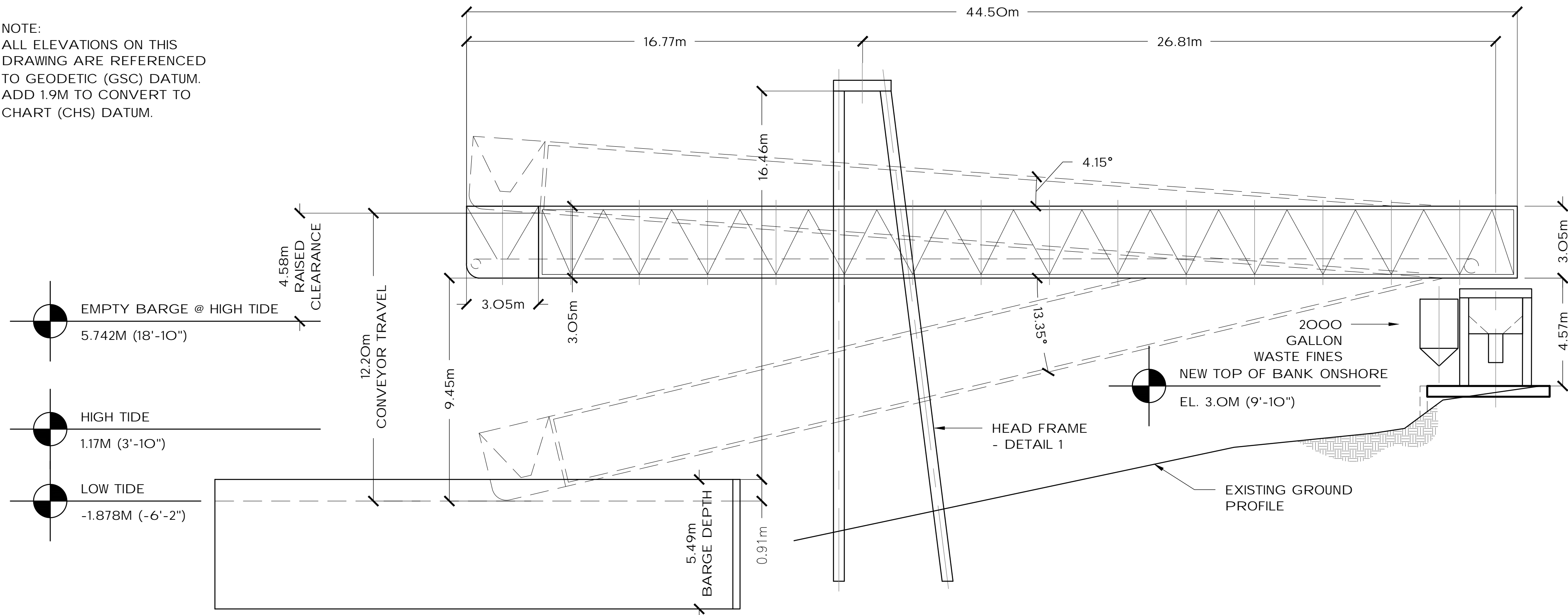
E NORTH ELEVATION
SCALE: 1:200



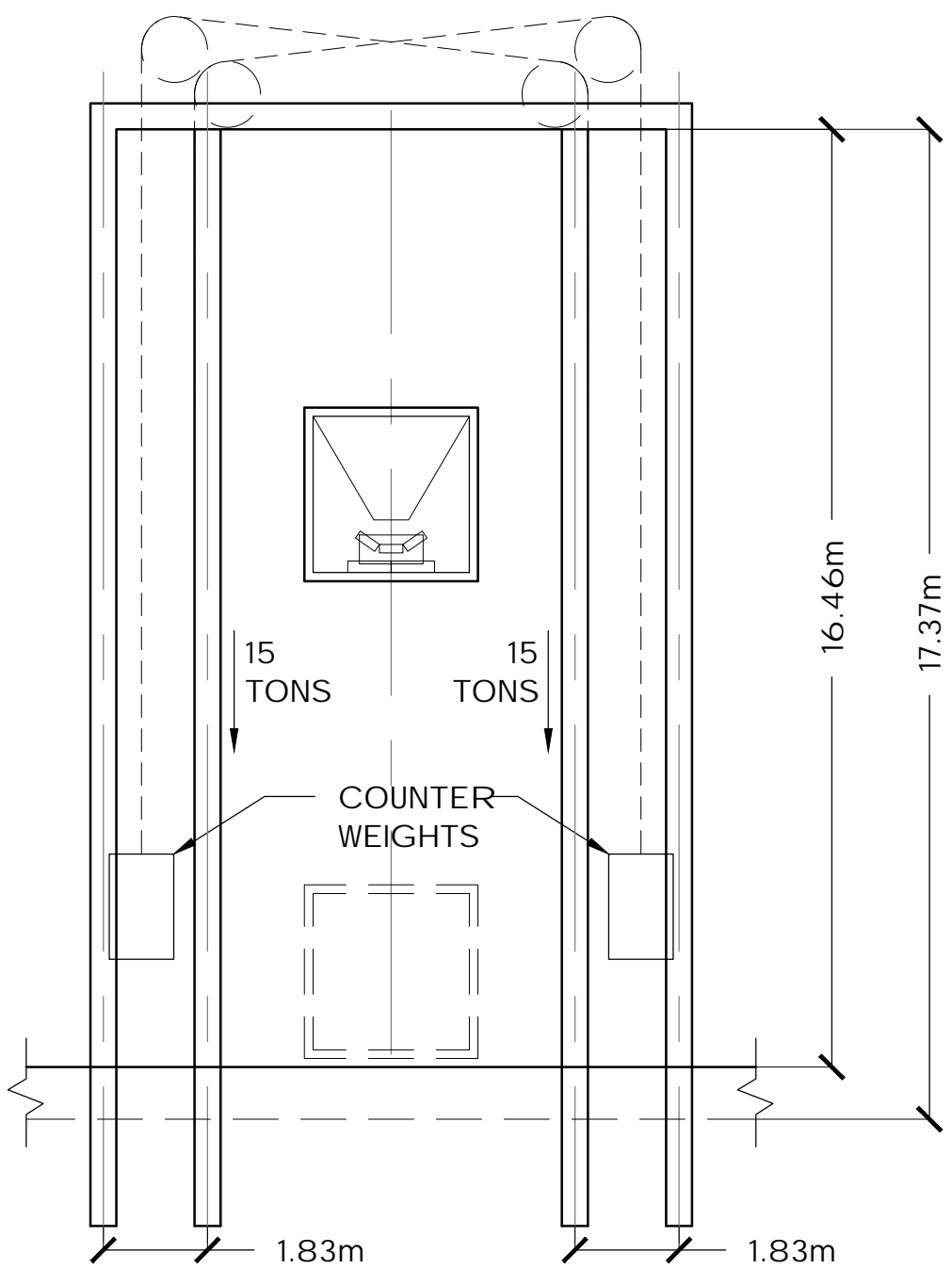
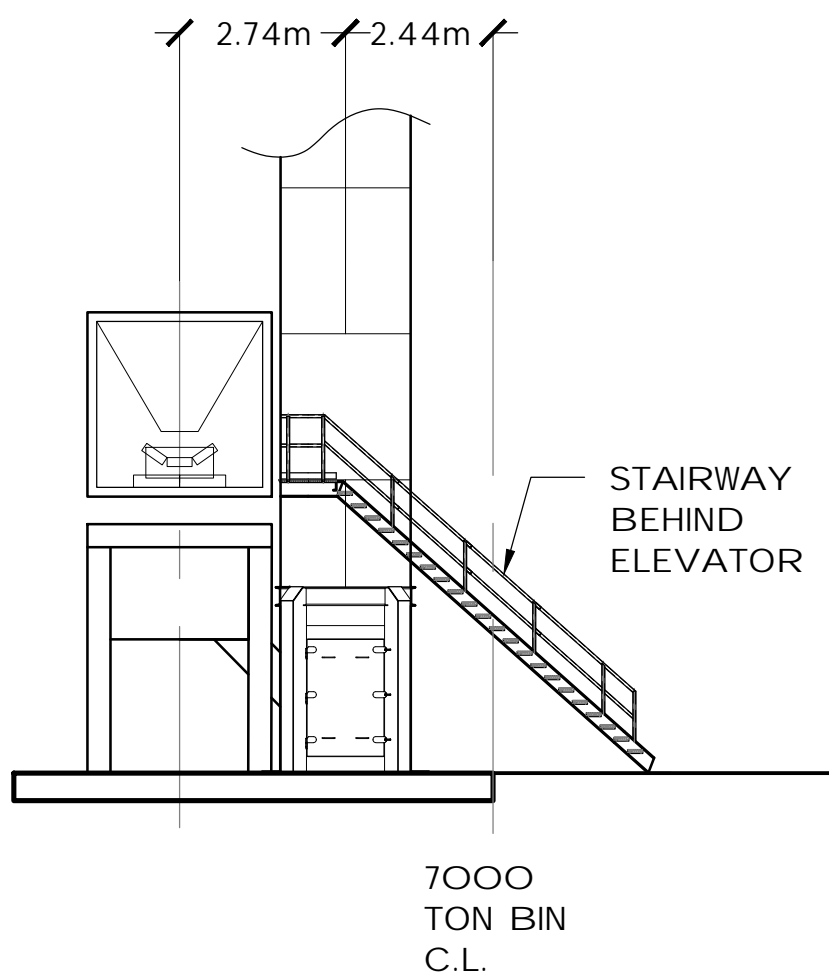
F SOUTH ELEVATION
SCALE: 1:200

Rev. #	Date

NOTE:
ALL ELEVATIONS ON THIS
DRAWING ARE REFERENCED
TO GEODETIC (GSC) DATUM.
ADD 1.9M TO CONVERT TO
CHART (CHS) DATUM.



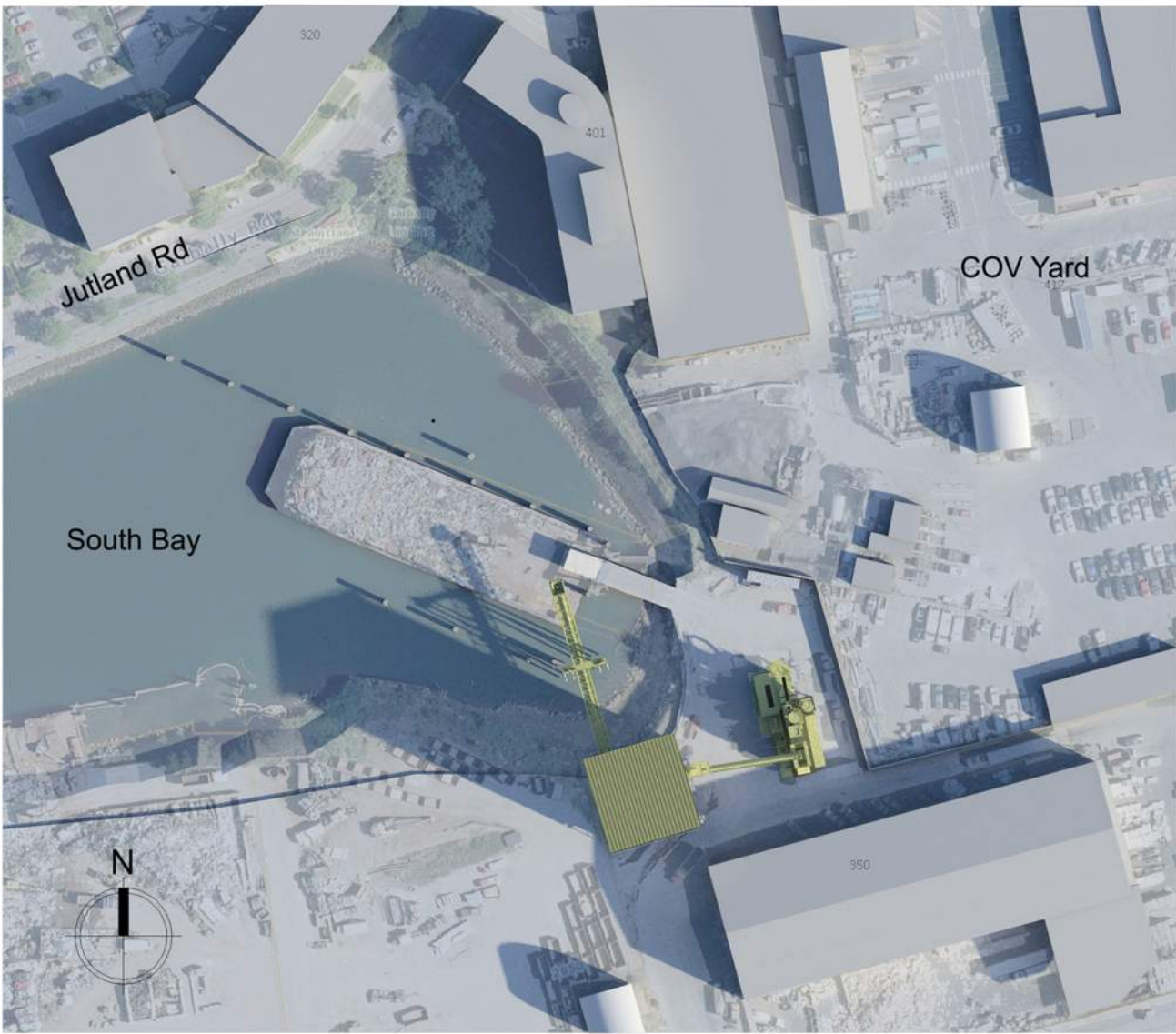
H LIFT CONVEYOR ELEVATION
SCALE: 1:125



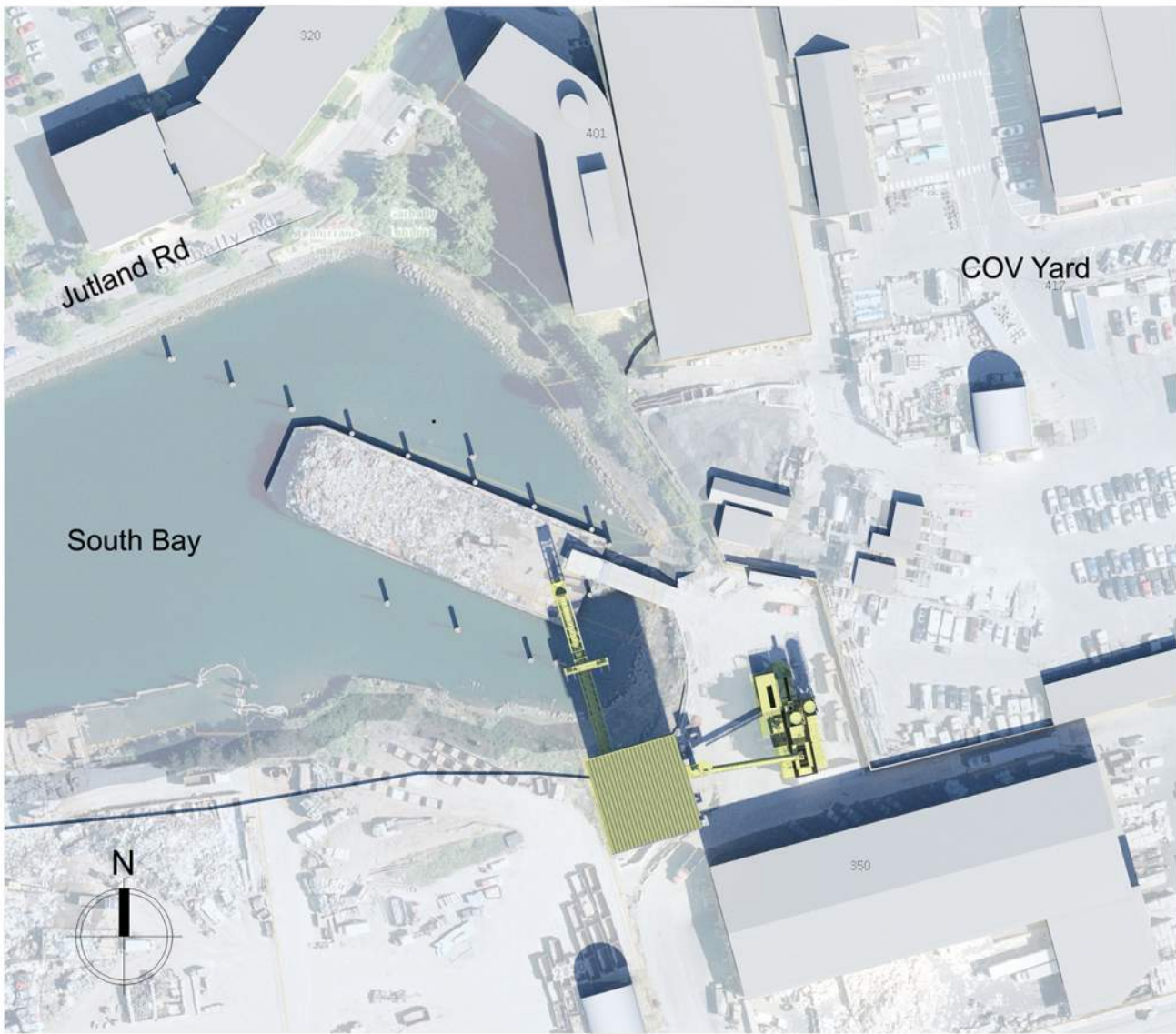
1 HEAD FRAME
SCALE: 1:125

Rev. #	Date

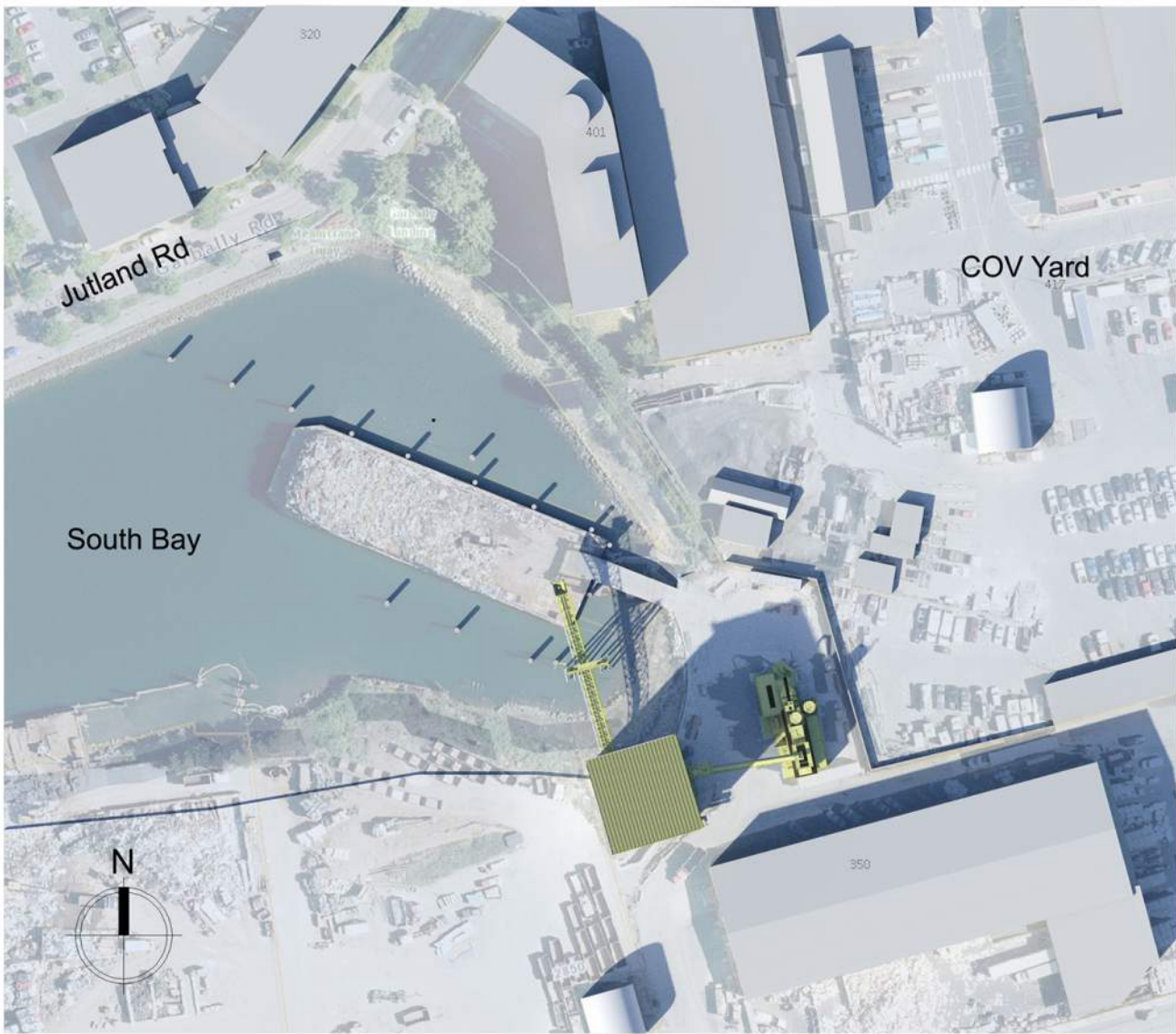
Shadow Studies



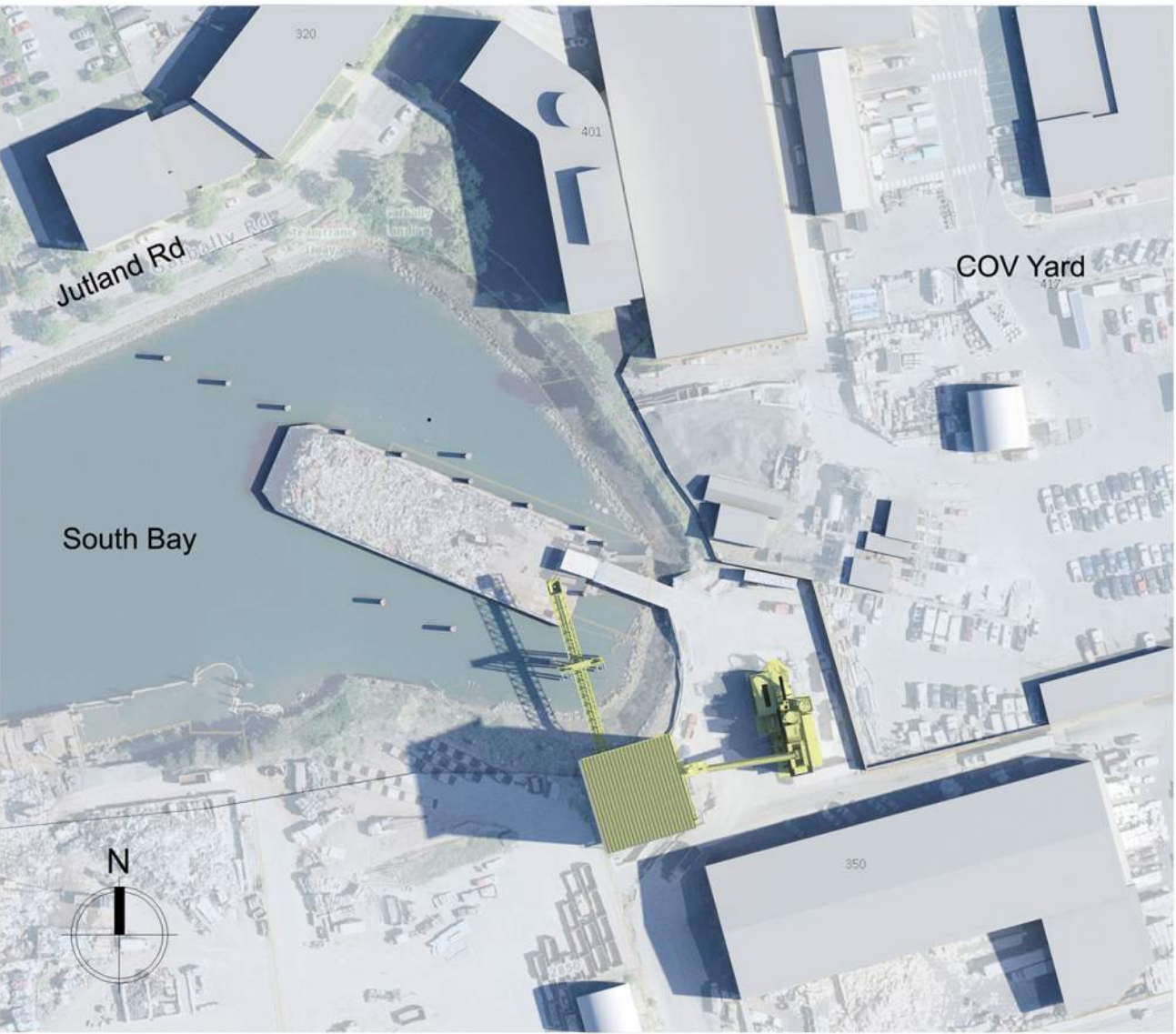
March 20 / Sept 22 9:00AM



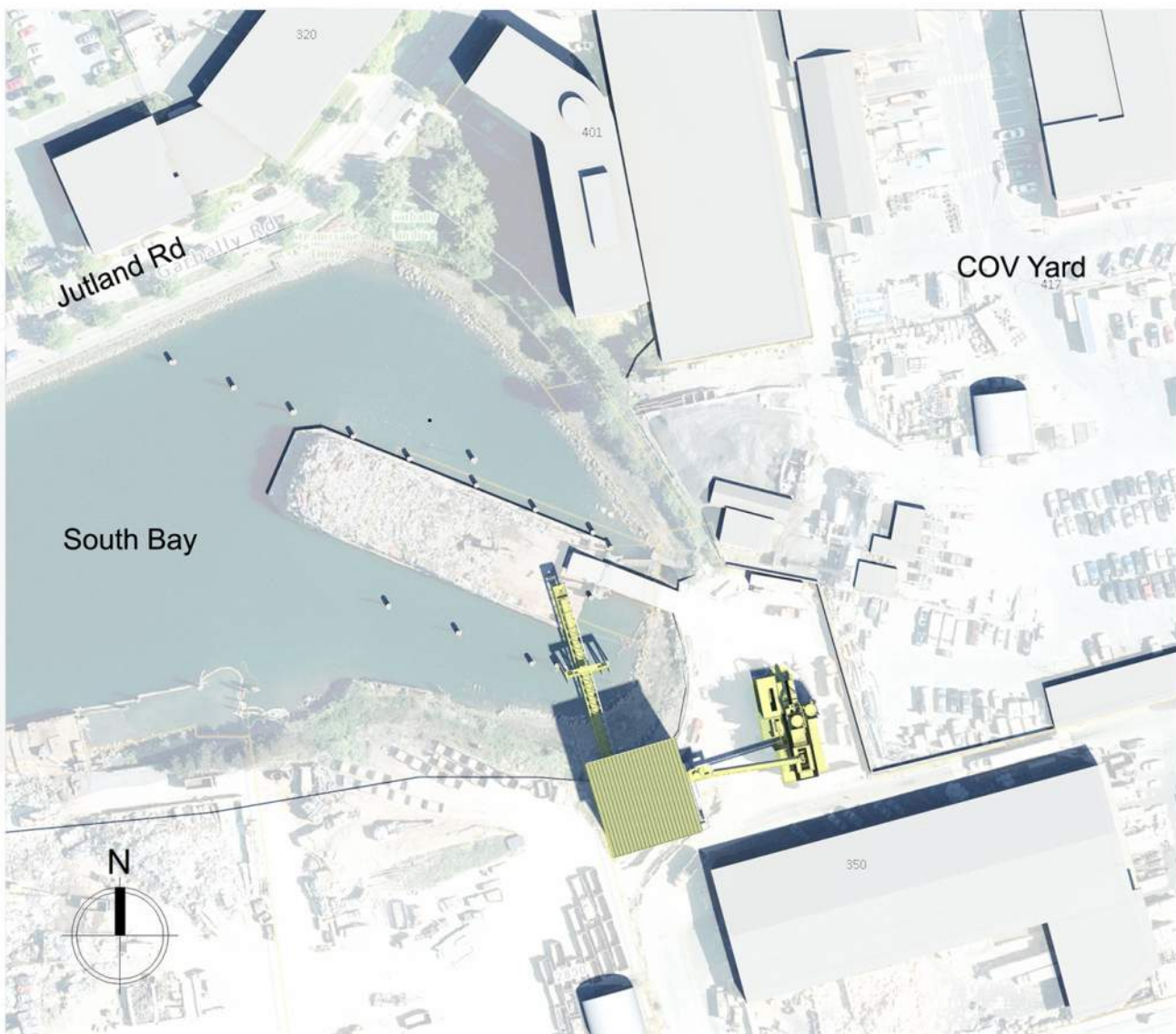
March 20 / Sept 22 12 Noon



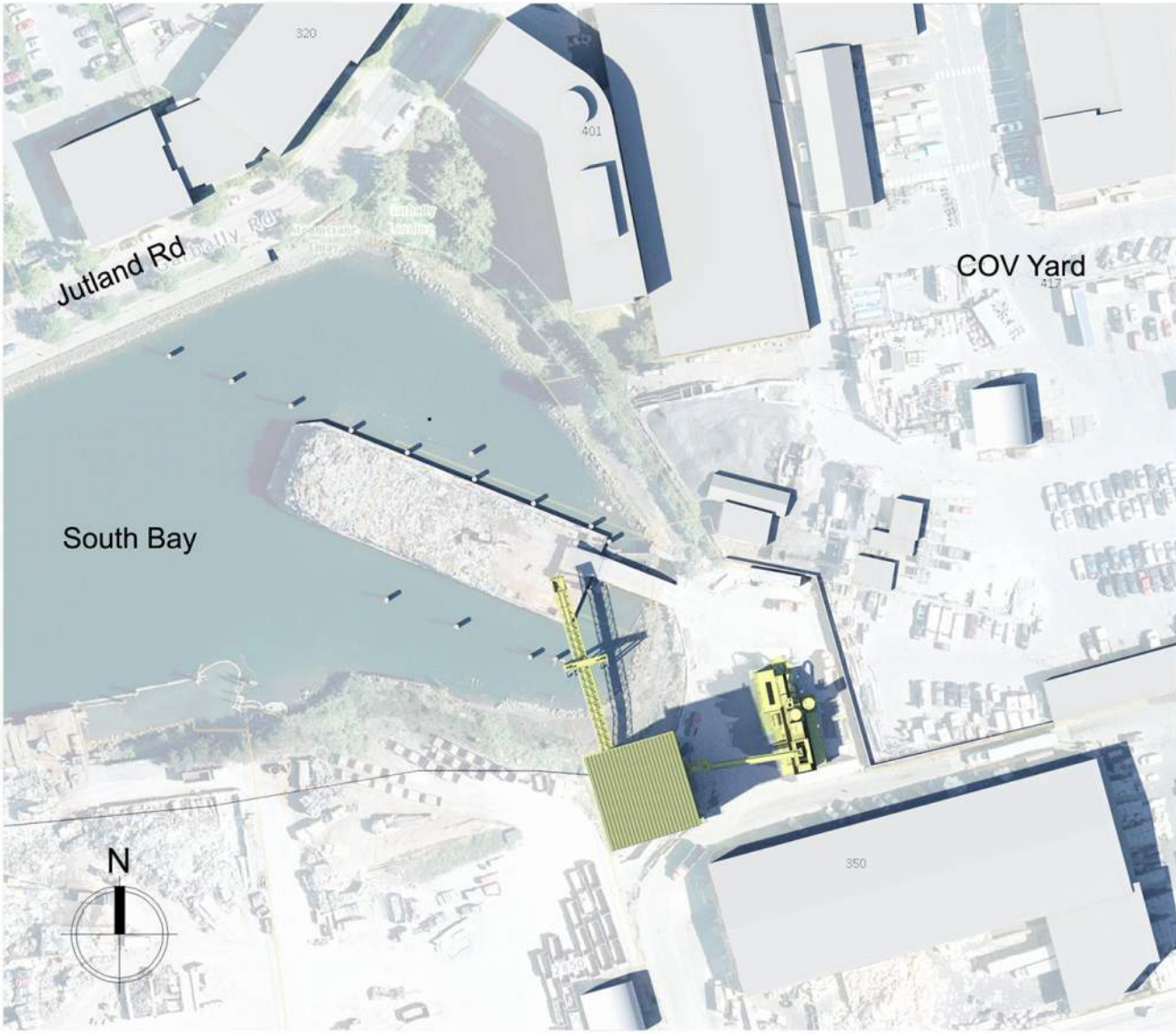
March 20 / Sept 22 3:00PM



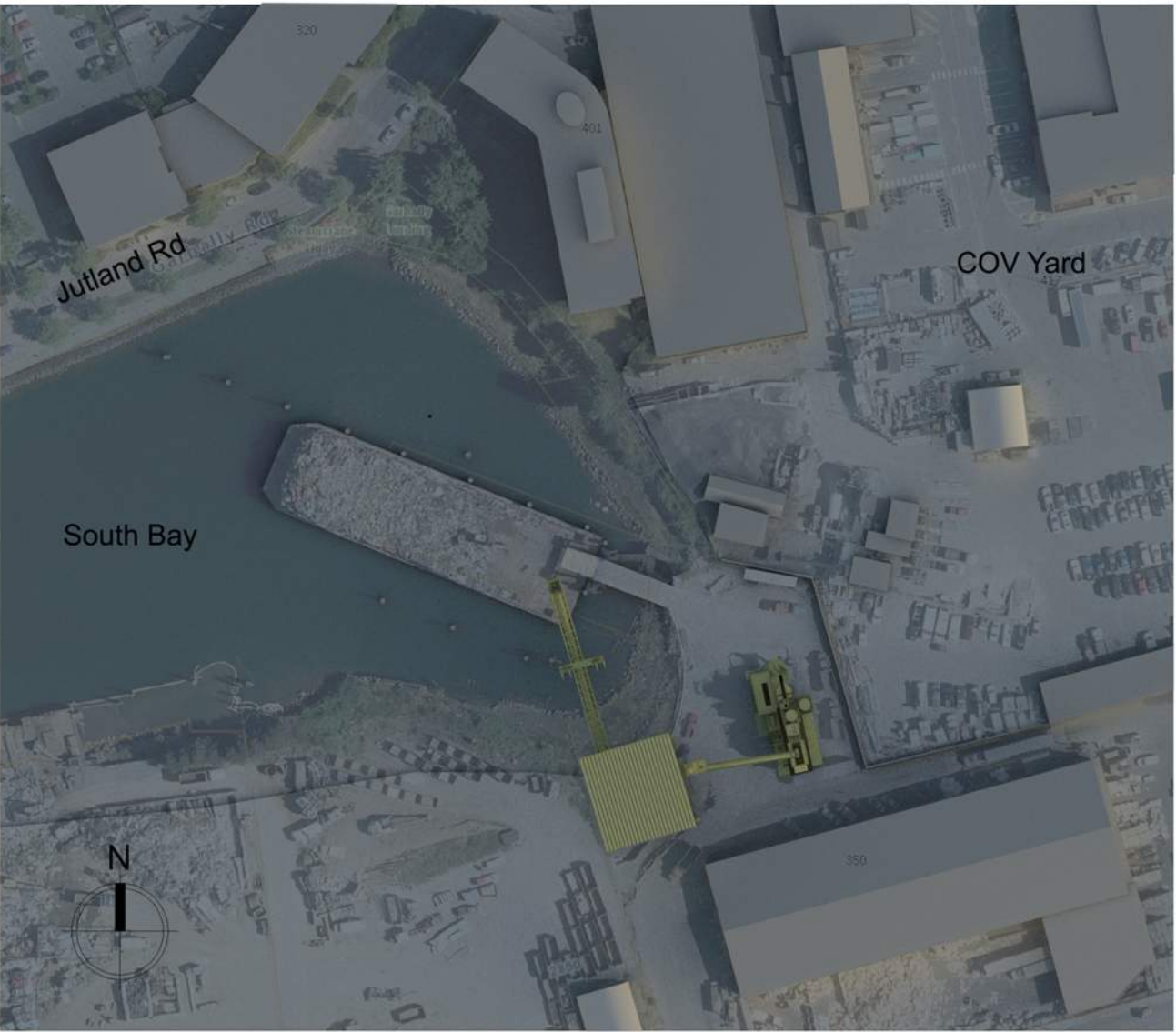
June 21 9:00AM



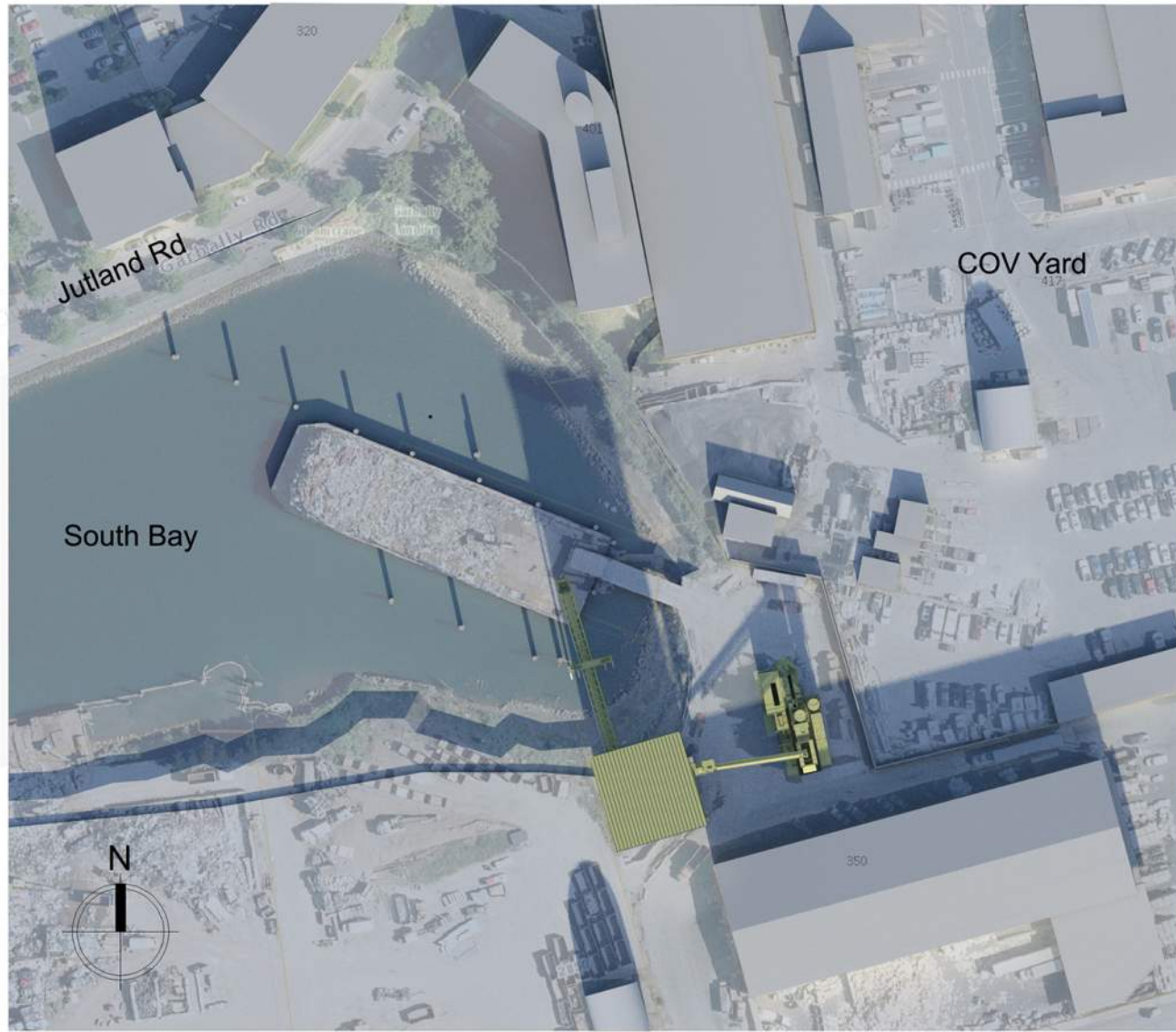
June 21 12 Noon



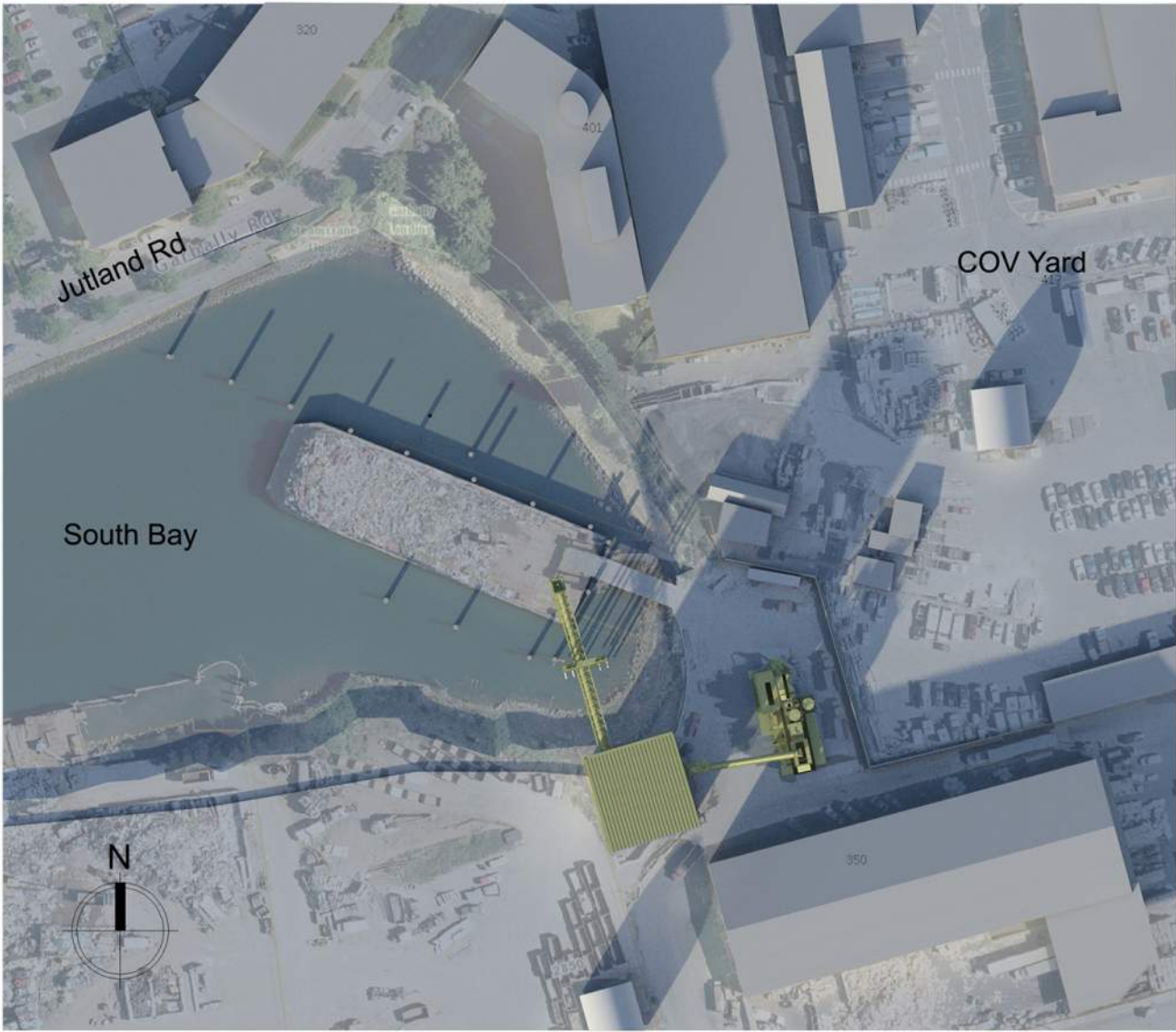
June 21 3:00PM



December 21 9:00AM



December 21 12 Noon



December 21 3:00PM

Rev. #	Date