

1

Update to Rezoning and Development Permit with Variances Application For 1023 Tolmie Avenue

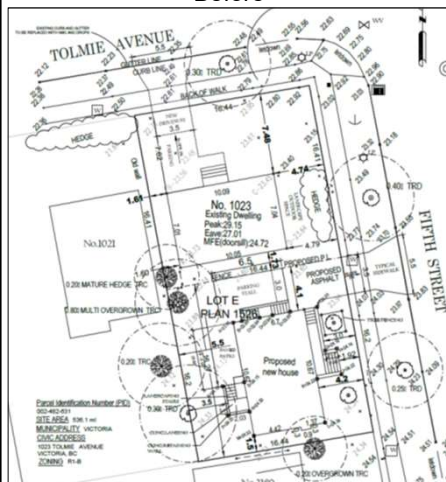


1

Site Plan

2

Before



After



2

Elevations

3

Before



Front elevation
1/4" = 1'-0"



Left side elevation
1/4" = 1'-0"

After



Front elevation



North elevation



3

Elevations

4

Before



Rear elevation
1/4" = 1'-0"

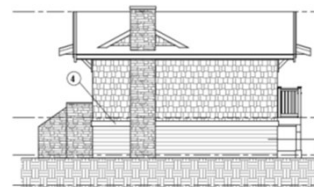


Right side elevation
1/4" = 1'-0"

After



Rear elevation



South elevation



4

Street Context

5

Before



After



5

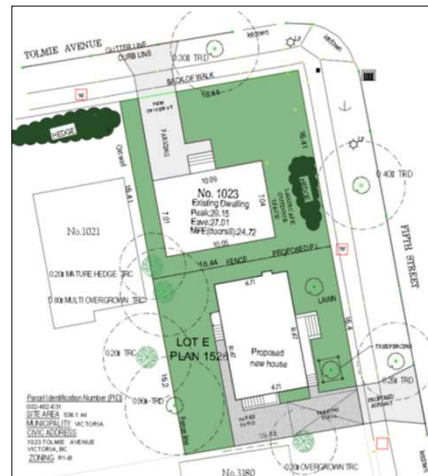
Landscape Plan

6

Before



After



6