

**Rezoning Application No. 000739**

1244 Wharf Street, Victoria, BC



1

## Aerial Map



2

Existing Site



3

Existing Site



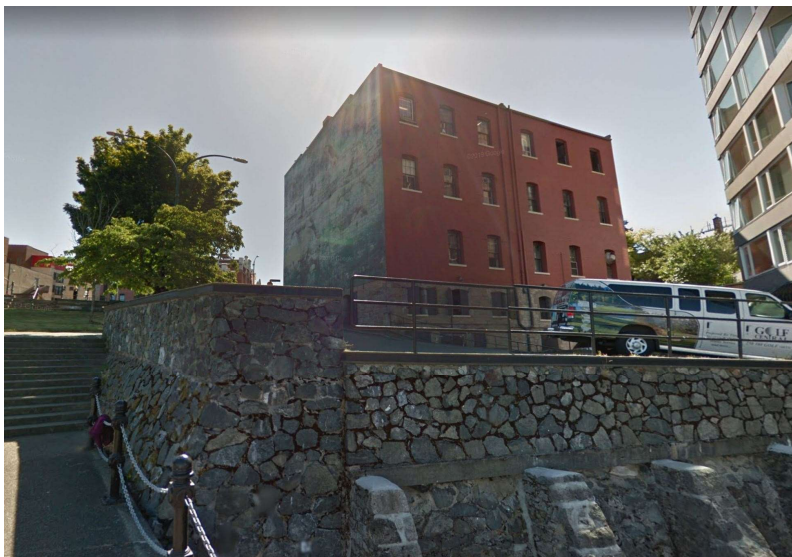
4

## Existing Site



5

## Existing Site



6

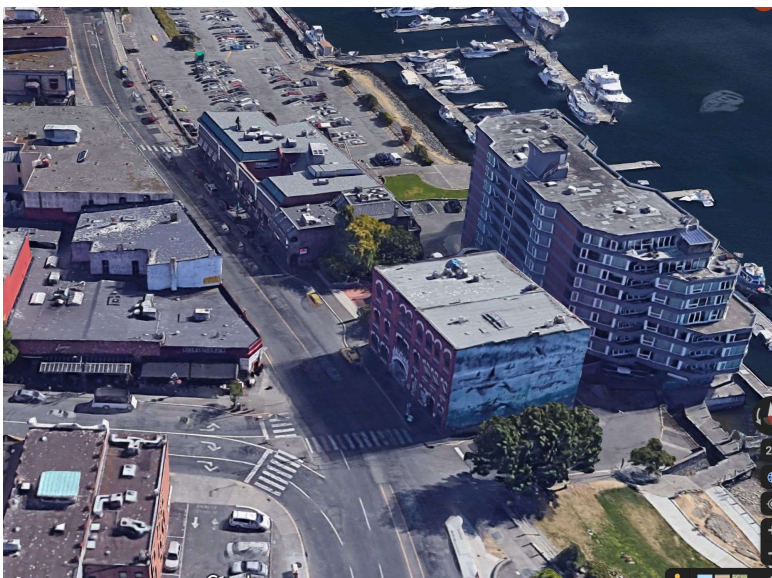


### Existing Site



7

### Neighbouring Properties



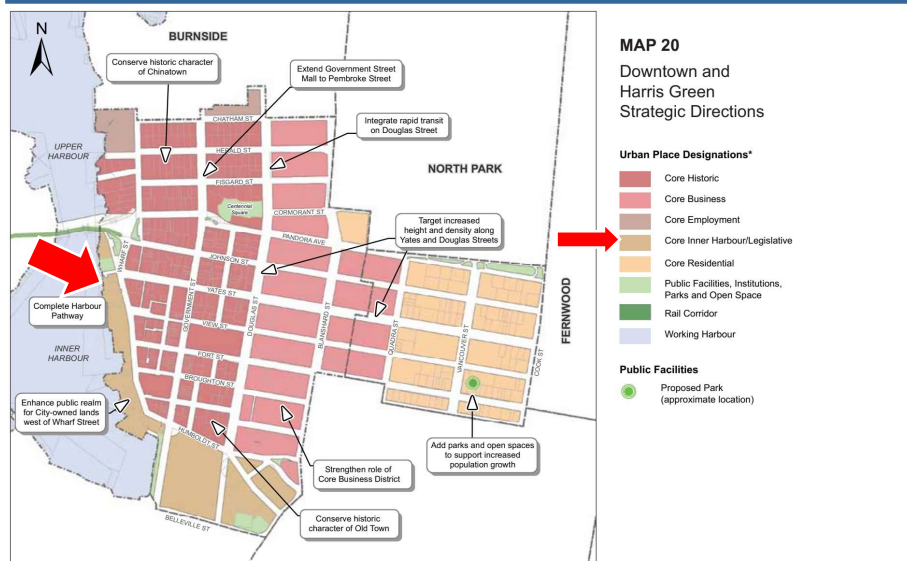
8

# Neighbouring Properties



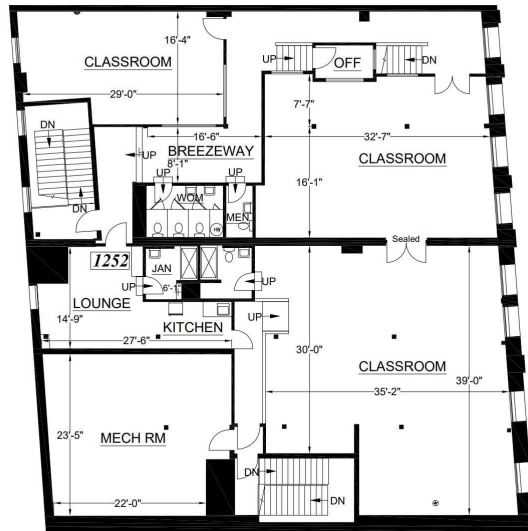
9

# OCP Map



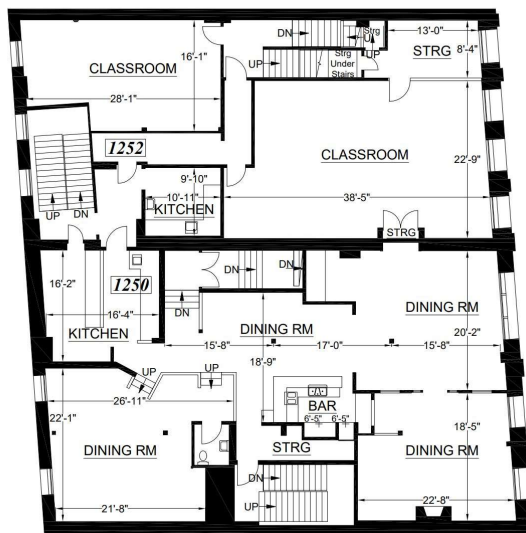
10

## Plans – 3<sup>rd</sup> Floor



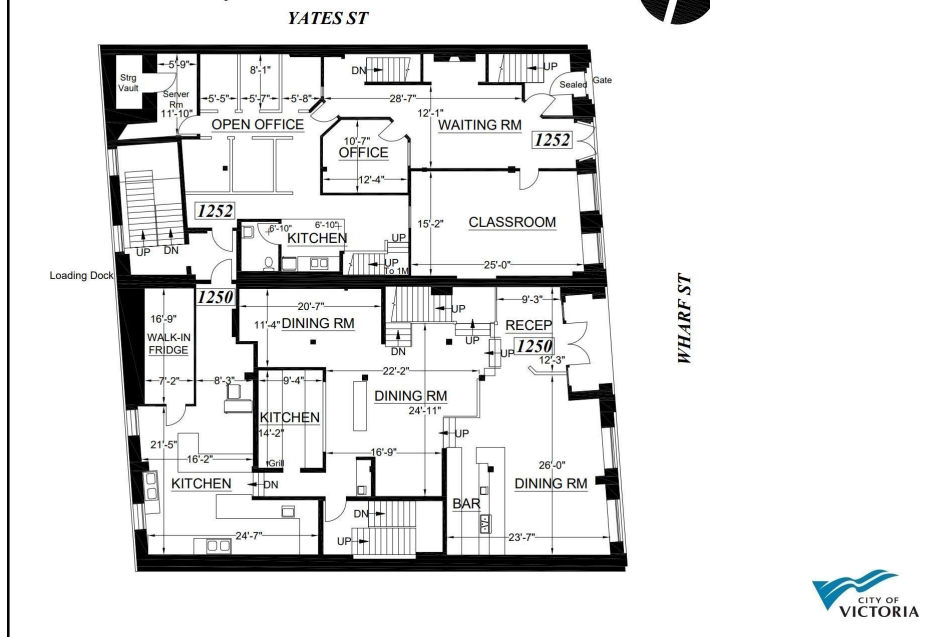
11

## Plans- Second Floor



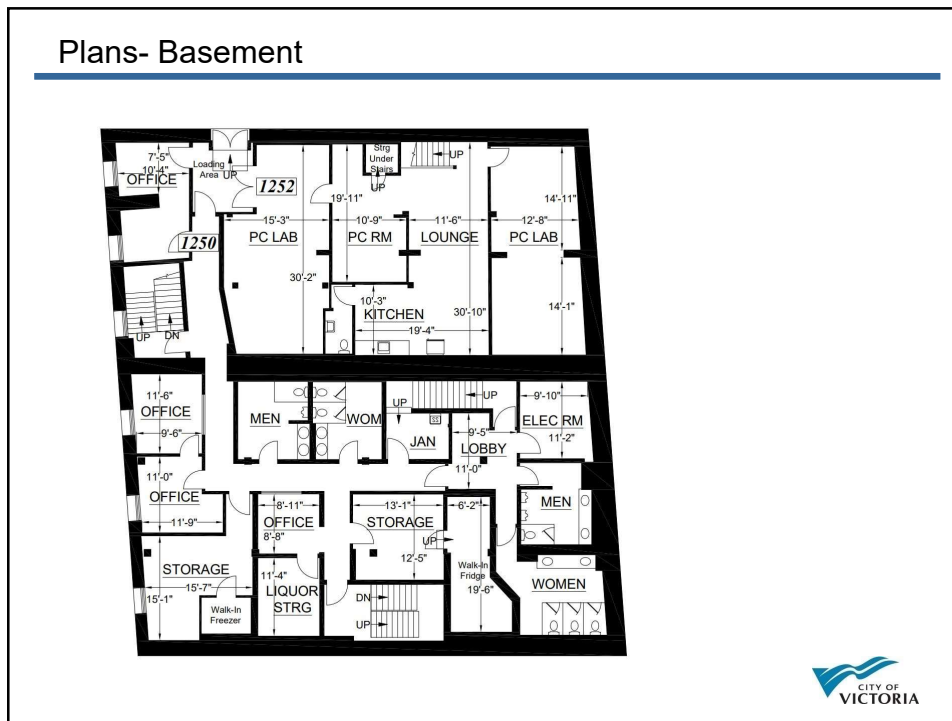
12

## Plans – Ground Floor



13

## Plans- Basement



14

## Plans- Basement Lowest Level

