

1

Development Permit Application for 1088 Johnson Street



1

Aerial View

2



2

Context

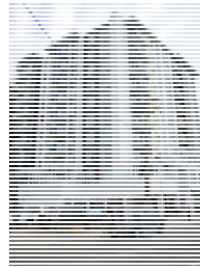
3



Subject Property



Sutton Place (west on Johnson Street)



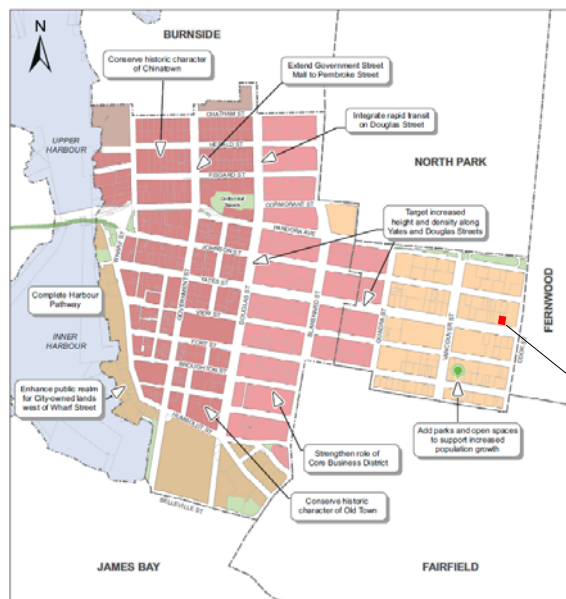
Mondrian (east on Johnson Street)



3

Official Community Plan

4



MAP 20
Downtown and
Harris Green
Strategic Directions

Urban Place Designations*

- Core Historic
- Core Business
- Core Employment
- Core Inner Harbour/Legislative
- Core Residential
- Public Facilities, Institutions, Parks and Open Space
- Rail Corridor
- Working Harbour

Public Facilities

- Proposed Park (approximate location)

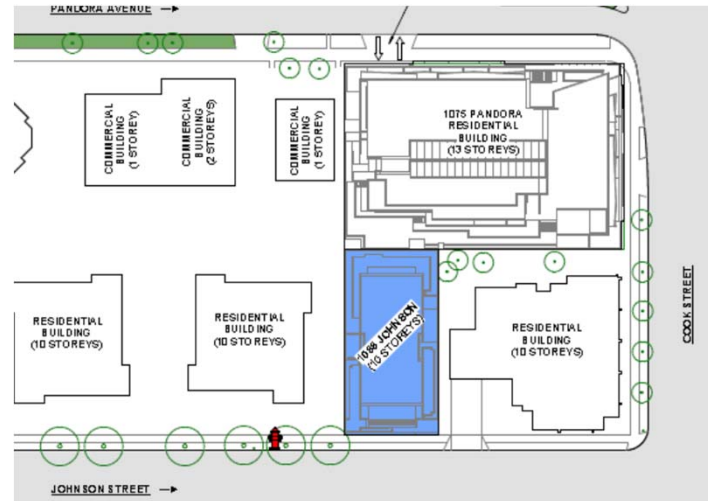
1088 Johnson Street



4

Site Plan

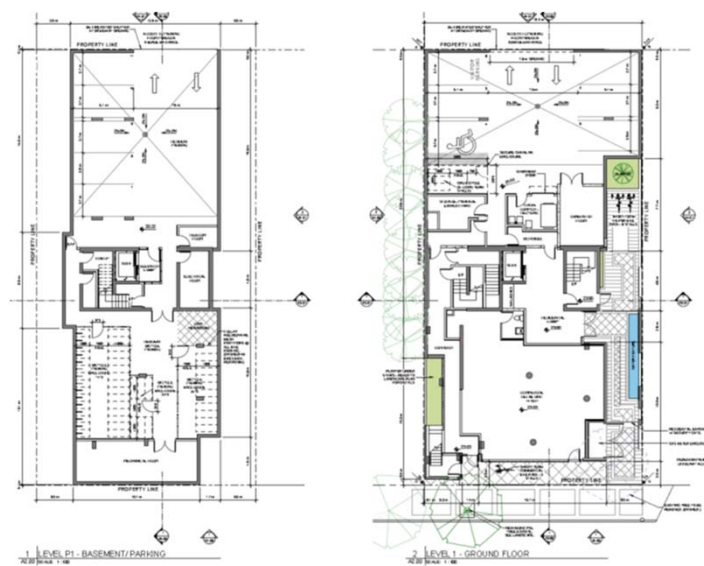
5



5

Floor Plans: Basement & First

6



6

Floor Plans: Second & Third

7



7

Floor Plans: Fifth-Ninth

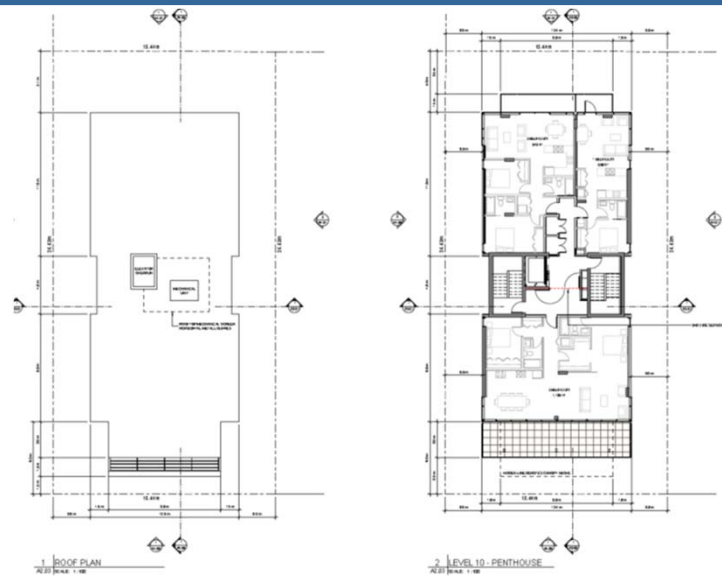
8



8

Floor Plans: Tenth & Roof

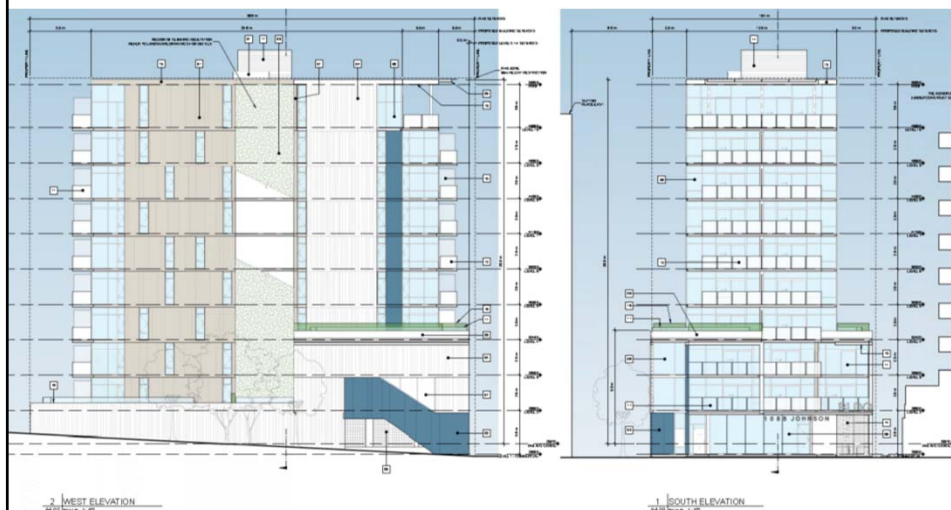
9



9

Elevations

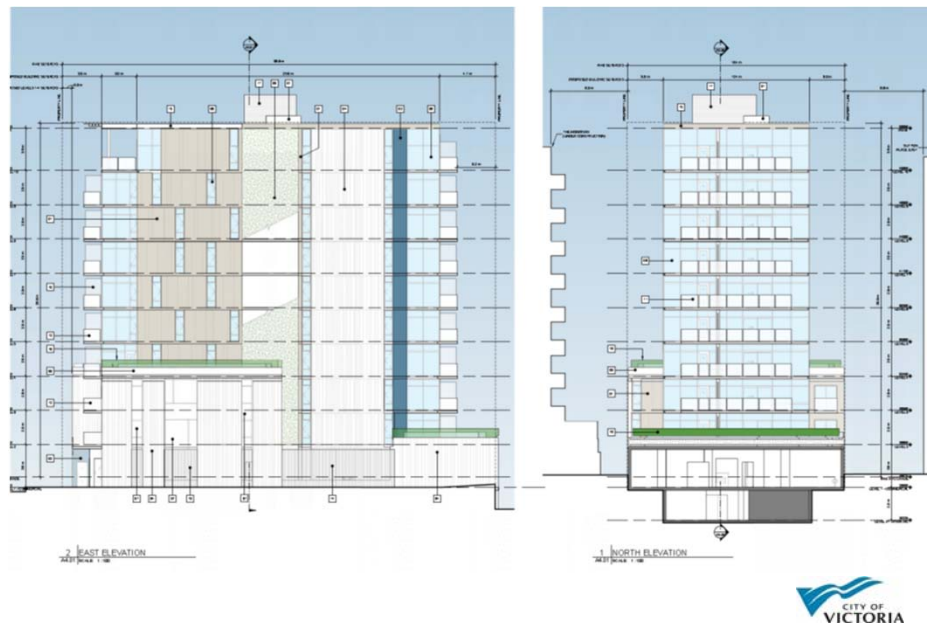
10



10

Elevations

11



11

Renderings & Street Context

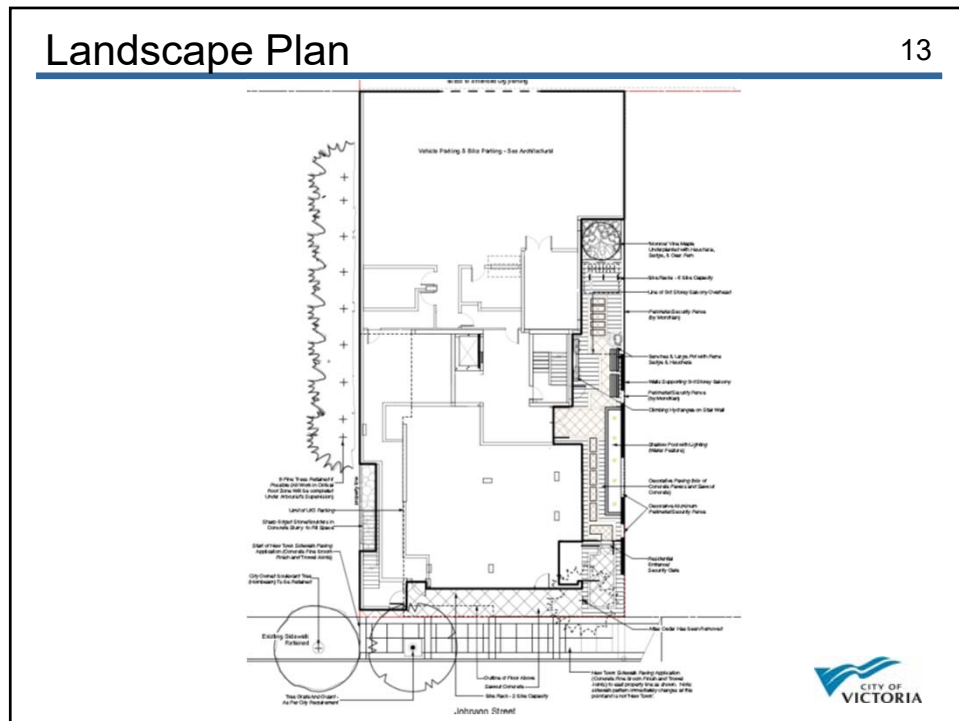
12



12

Landscape Plan

13



13