

Attachment A - Photographs



Front (West) and Rear (south) Elevation



Rear (south) elevation



South Entrance



Rear (East) Elevation



Side (north) elevation



Garry Oak



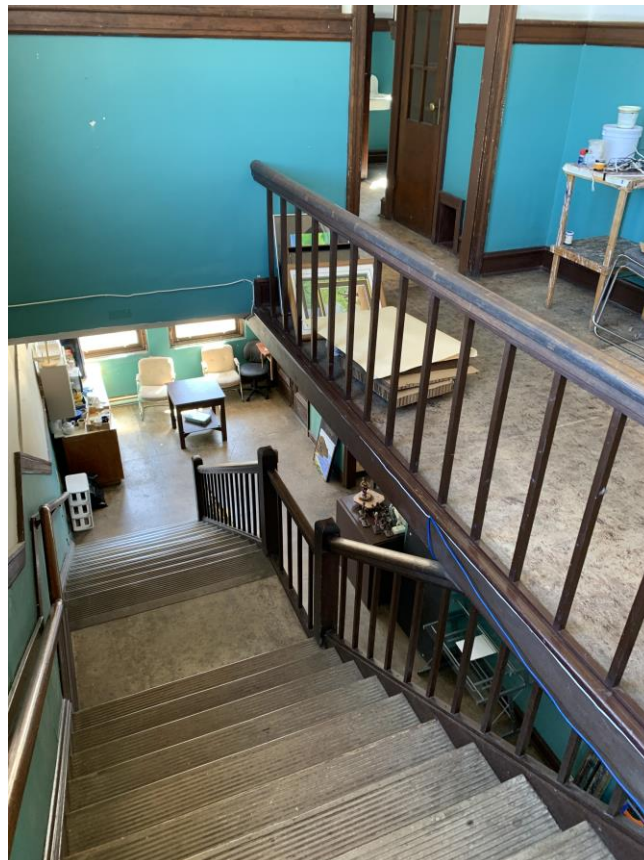
Crack in Brickwork



Second Storey Hallway



Classroom on Upper Storey



South Staircase from Upper Storey to Main Storey



Ceiling patches



Main Entrance



Washrooms with Slate Dividers at Ground Level



Basement Workshop Area