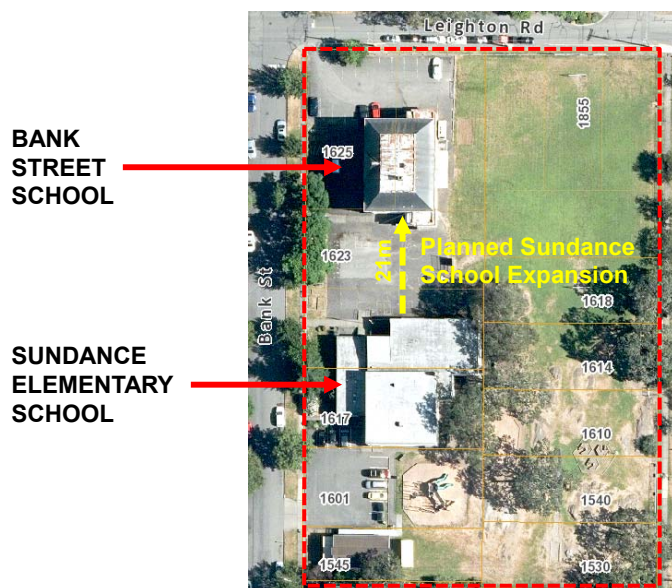


# Report on the Potential Heritage Designation of 1623-1625 Bank Street

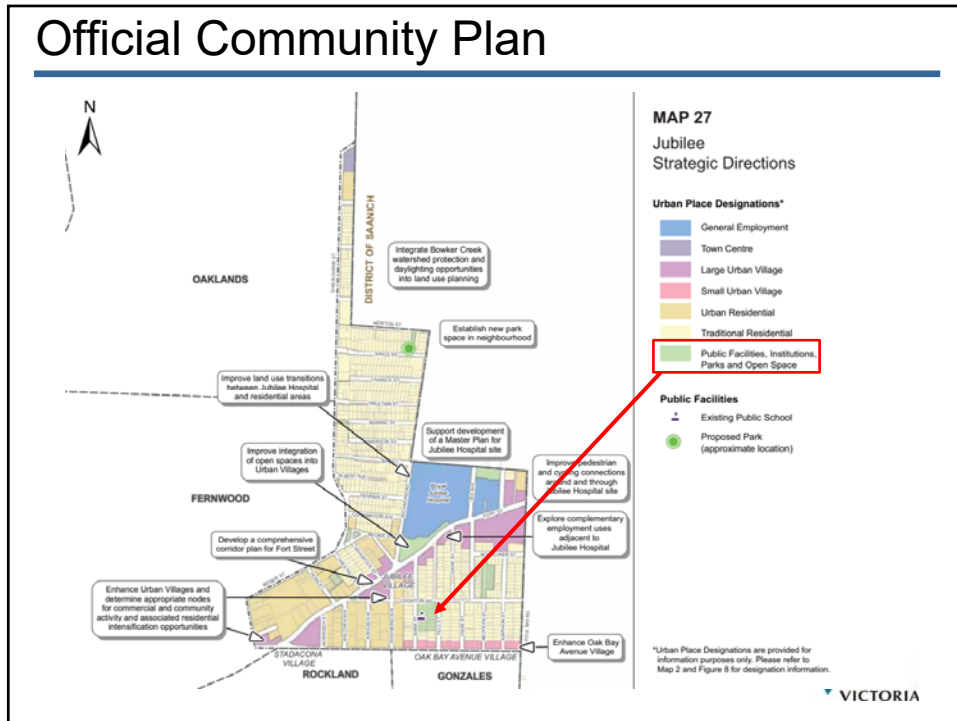


1

## Aerial Map



2



3



4



5



6





7



8



9



10





11



12

## History & Significance

- Designed by architect D.C. Frame (architect of the Chinese Public School at 636 Fisgard Street)
- Built in 1912, with an enrollment of 193 students
- Considered an excellent example of a small masonry school in a nearly original state
- Features a chateau roofline, red brick walls and a battered concrete base
- A landmark in the South Jubilee neighbourhood



13

## Building Condition

- Most interior walls contain asbestos and lead paint and would have to be removed
- Mechanical systems date back to 1912
- The building has no fire protection or fire alarms installed.
- The building has not been seismically upgraded and is at high risk during an earthquake
- Slate roof requires total replacement
- Windows are at the end of their service life
- Deteriorating brickwork, peeling paint, rusting cornices, spider cracking visible on exterior
- Building is inaccessible



Spider crack in foundation



14

## Building Condition



Second Storey Hallway



15

## Building Condition



16



## Building Condition



17

## Building Condition



Main Entrance



Washrooms with Slate Dividers at  
Ground Level



18

## Other Schools on the Heritage Register



George Jay Elementary School- 1118 Princess Avenue (1909 Wing)

Victoria High School- 1260 Grant Street (1911 wing)

Quadra School and Annex- 3031 Quadra Street (1914 wing and annex)



Burnside School- 3130 Jutland Road (1913 wing)

Oaklands School- 2827 Belmont Avenue (1913 wing)- Register Status

Margaret Jenkins School and Annex- 1824 Fairfield Road (1913 wing and annex)



Quadra Primary School- 2549 Quadra Street (1921)

