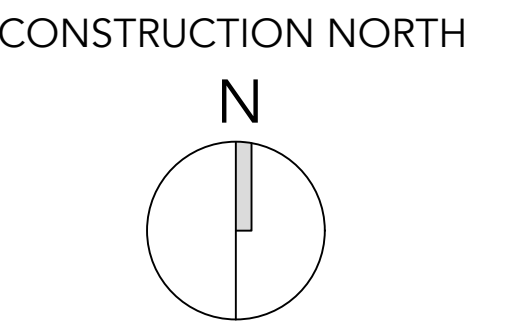
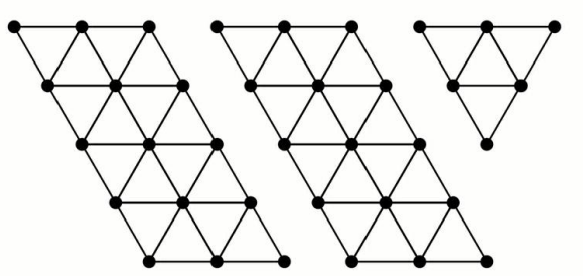


*NOTE: NO CHANGES WILL BE MADE TO THE EXTERIOR



NOTES/REVISIONS:

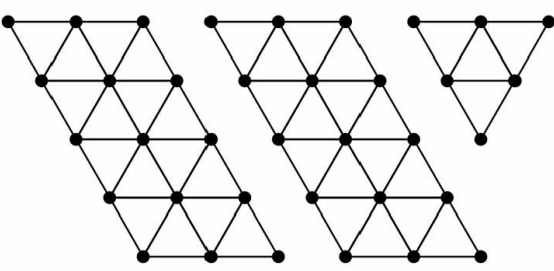
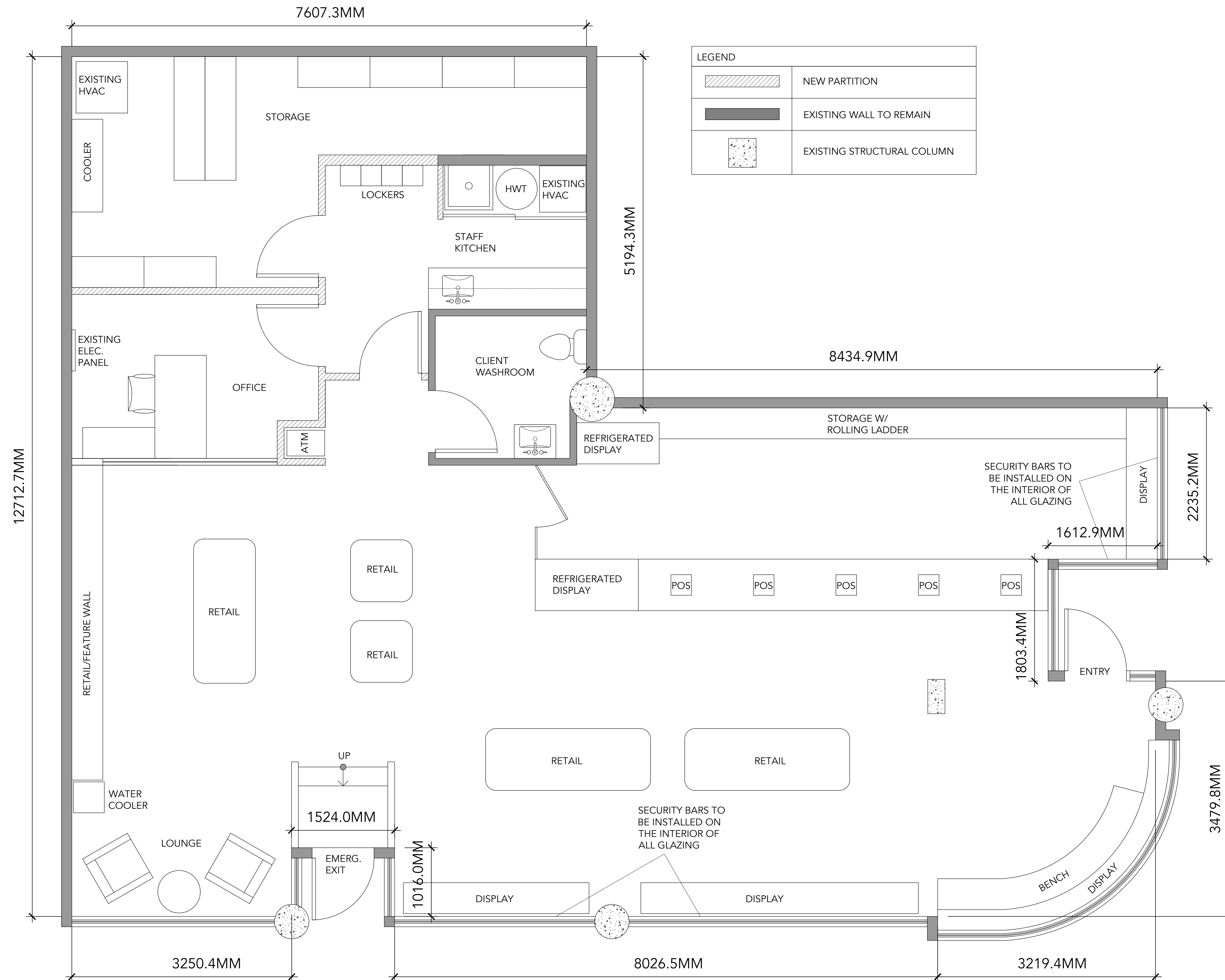
| | |
|-------------|------------|
| ISSUED FOR: | DATE: |
| REZONING | JULY 9-20 |
| REVISIONS | AUG. 17-20 |
| | |

PROJECT:
SEED & STONE
901 GORDON ST.
VICTORIA, BC

DRAWING:
COVER PAGE

| | |
|------------------------|--|
| SCALE: N/A | |
| DATE: AUG. 17, 2020 | |

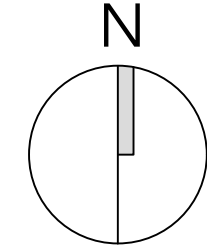
ID1.00



WESTERN INTERIOR
DESIGN GROUP

#100 - 2105 DOWLER PLACE
VICTORIA, BC V8T 5B6
(250) 475-3666

CONSTRUCTION NORTH



NOTES/REVISIONS:

| | |
|-------------|-------------|
| ISSUED FOR: | DATE: |
| REZONING | JULY 9-20 |
| REVISIONS | AUG. 17-20 |
| REVISIONS | SEPT. 16-20 |

PROJECT:
SEED & STONE
901 GORDON ST.
VICTORIA, BC

DRAWING:
FLOOR PLAN

| | |
|-------------------------|--------|
| SCALE: 1:30 | ID1.01 |
| DATE: SEPT. 16, 2020 | |