

A close-up photograph of a person's hands holding a vintage brass compass. The compass is held over an old, sepia-toned map. The compass face shows cardinal directions (N, S, E, W) and intermediate directions (NE, SE, SW, NW). The hands are positioned as if presenting the compass. The background is slightly blurred, focusing attention on the compass and hands.

# VICTORIA EQUITY FRAMEWORK

COUNCIL PRESENTATION

OCTOBER 2020

# AGENDA

- Introductions
- Review Project Considerations/Principles
- Discuss work completed to date + Key Takeaways
- Presentation of Community Profile
- Potential Components of Victoria EDI Framework (based on background doc review and case studies)
- Discussion of the need to ground truth this information (community profile and background document review) in the lived experience of the community
- Next Steps

# PROJECT PRINCIPLES + CONSIDERATIONS

## DEFINITION OF EQUITY

Equity is treating everyone fairly by acknowledging their unique situation and addressing systemic barriers. The aim of equity is to ensure that everyone has access to equal benefits and outcomes.

## EQUITY CONSIDERATIONS (Council Values)



**Ability**  
persons with  
disabilities



**Education**  
Level achieved



**Housing Security**  
Tenure + Precarity



**Age**  
Seniors,  
Youth,  
Children



**Ethnic Origin**  
Includes  
Indigenous +  
Visible Minorities



**Income**  
Absolute +  
Relative level,  
living wage,  
wealth



**Citizenship**  
Immigrants +  
refugees



**Gender**  
Male, Female,  
Trans, Non-binary

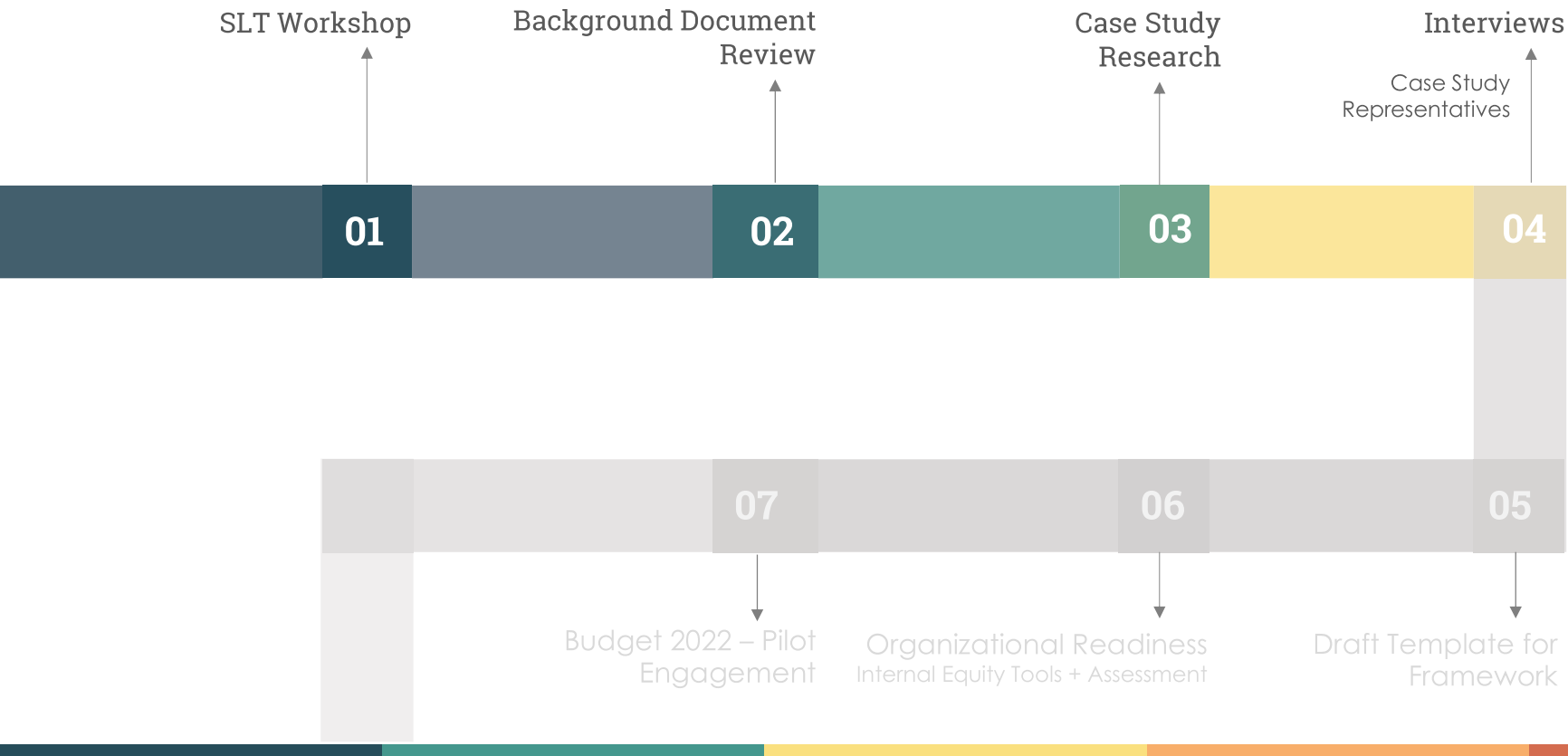


**Religion**  
Faith belief  
systems,  
Customs



**Sexual Orientation**  
Lesbian, Gay, Bi, Trans, Queer, 2Spirit

# WORK COMPLETED TO DATE



# KEY TAKEAWAYS

## Background Document Review (16 documents)

- Importance of engagement
  - Clear, inclusive and accessible engagement is important and a key component for achieving goals outlined in Accessibility Framework, Strategic Plan & Engagement Plan

## Case Study Research (23 Case Studies)

- Strategies are a direct result of persistently and systematically marginalized communities holding municipal governments accountable:
  - City of Toronto's Lived Experience Advisory Group
  - City of Toronto & City of Portland Equity Budgeting Tools
  - Ottawa Equity & Inclusion Handbook
  - Seattle & Portland Equity Guides & Toolkits

# COMMUNITY PROFILE - Purpose

## UTILITY

- **Measure long-term broad-level change**, at a neighborhood, or citywide level
- **Understand similarities and differences** across local contexts
- **Provide supplementary information** in communications and engagement
- **Compare trends** in Victoria to other municipalities, regions

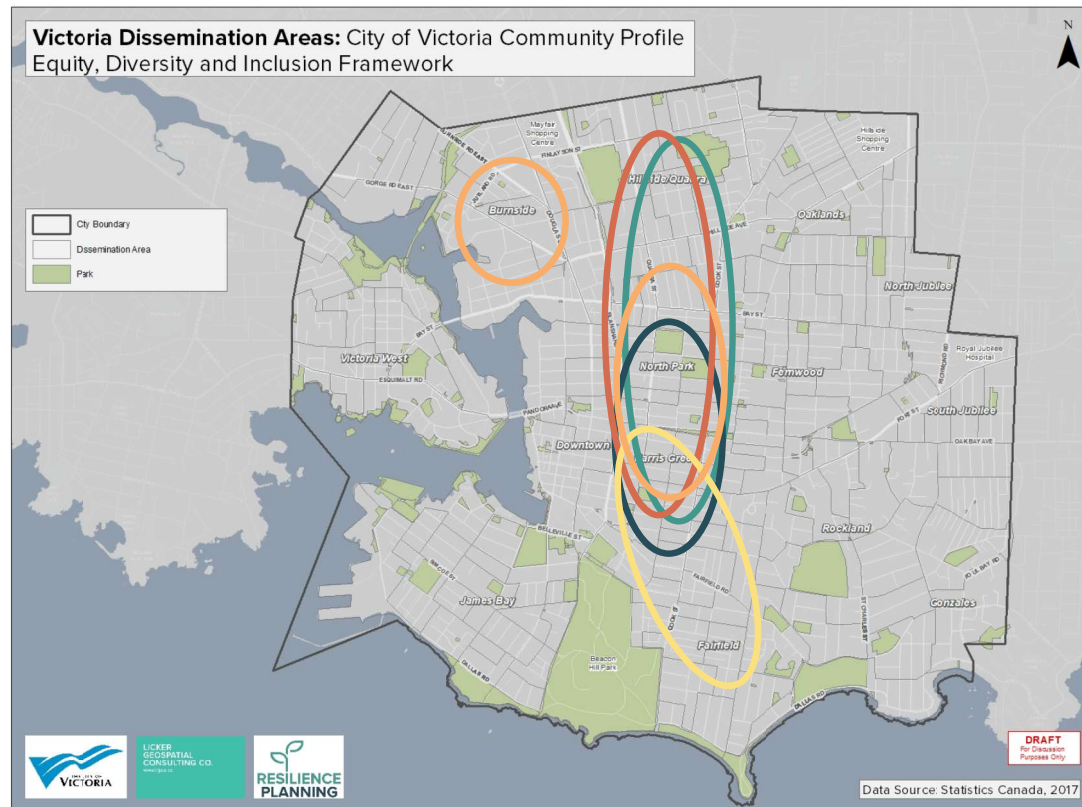
## LIMITATIONS

- **Accuracy:** Broad categories and/or geographies can obscure nuanced changes and trends
- **Availability:** Annual data is hard to come by, and these data are sometimes estimates based on a sample of total population
- **Interpretation:** These data may require narrative that provides an explanation and analysis of the indicator: the numbers cannot speak for themselves as this leaves room for misinterpretation

# COMMUNITY PROFILE SUMMARY – High Level Findings

## Housing, Income, Transportation Observations

- **North Park, Hillside/Quadra**  
 Lower income, high proportion of renters, higher unemployment, subsidized housing, lower home ownership
- **North Park, Harris Green**  
 Pockets of very low income, poor building conditions, risk of losing residential building stock  
*What is the displacement risk?*
- **North Park, Harris Green, Hillside/Quadra**  
 Low income, more seniors on fixed income, retirees
- **Harris Green, Fairfield**  
 Poor transit access
- **North Park, Harris Green, Burnside**  
 Higher burden of combined housing and transportation costs  
 In some areas exceeds 60% of household income



# COMMUNITY PROFILE - Recommendations

## NEXT STEPS MIGHT INCLUDE

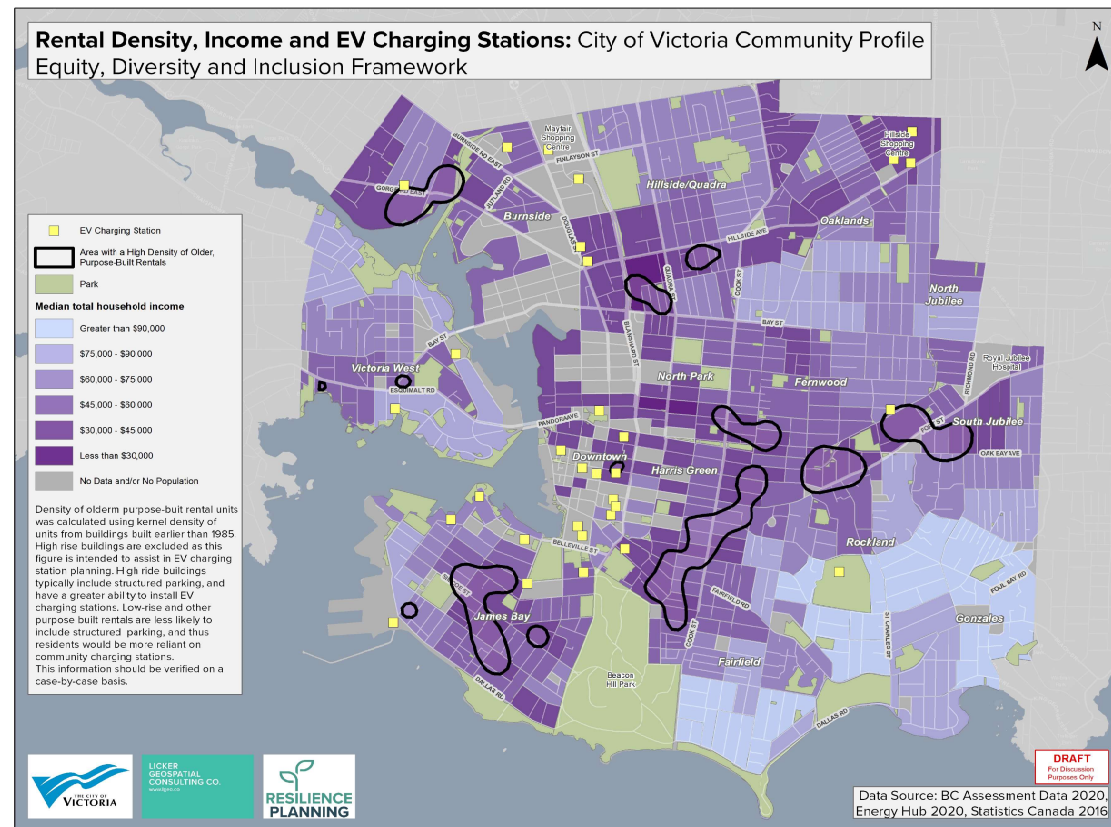
- Analyze for at least two points in time; continue to track and update
- Pursue data creation, collection and create ways to collect data (with partners)
- Compare with other municipalities and the region
- Disseminate to cross-sector partners, especially community-based organizations
- Ground truth the data by seeking community members' input and analysis
- Bolster with stories that illustrate individual and community realities
- Narrow and refine to what is most meaningful



# EQUITY EXAMPLE - PLAYGROUNDS



# EQUITY EXAMPLE – EV CHARGING STATIONS



# EDI FRAMEWORK TABLE OF CONTENTS

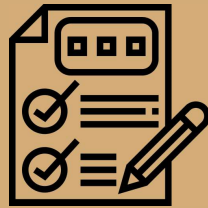
- Introduction to Equity, Intersectionality and Social Justice
- Tools and Resources for Internal Capacity Development
- Centering Equity in Victoria
  - Community Profile
    - Mapping tools
  - Equity Budgeting Tools
- Intersectional Lived Experience Advisory Committee ToR
- Glossary
- Sources of data and alignment with other city work

# GROUND TRUTH INFORMATION + DATA

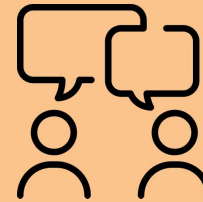
Disaggregated  
Data



Equitable Outcomes/  
Framework



Meaningful  
Civic Participation



# NEXT STEPS

