

1

Rezoning Application for 730-736 Tyee Road & 131-137 Skinner Street



1

Aerial View

2



2

Subject Site

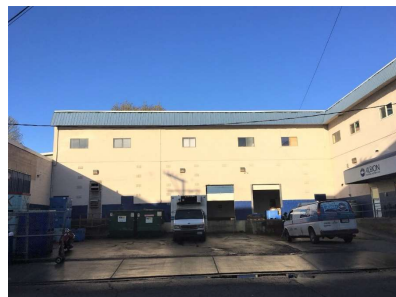
3



3

Neighbouring Properties

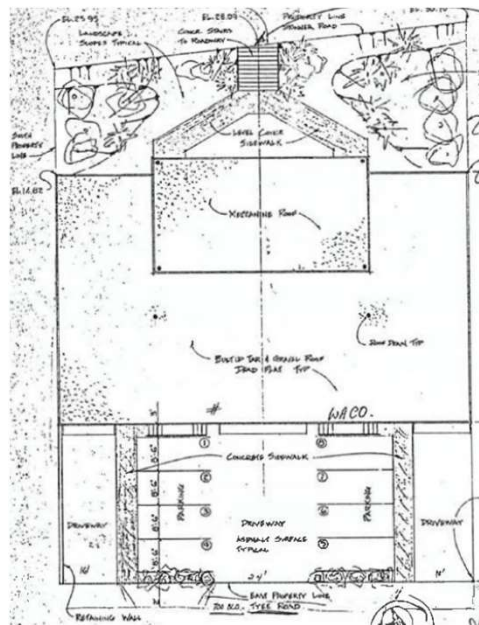
4



4

Site Plan

5



5

Official Community Plan

6



MAP 31
Victoria West
Neighbourhood

Urban Place Designations*

- Core Songhees
- General Employment
- Marine Industrial
- Large Urban Village
- Small Urban Village
- Urban Residential
- Traditional Residential
- Public Facilities, Institutions, Parks and Open Space
- Rail Corridor
- Working Harbour
- Marine
- Employment-Residential
- Industrial Employment

Public Facilities

- Existing Public School
- Proposed Park (approximate location)
- Community Centre

*Urban Place Designations are provided for information purposes only. Please refer to Map 2 and Figure 8 for designation information.



6

Distances from Other Retailers

7

