

1

Development Permit with Variances Application for 1475 Fort Street



1

Aerial View

2



2

Subject Property

3

1475 Fort Street

1471 Fort Street



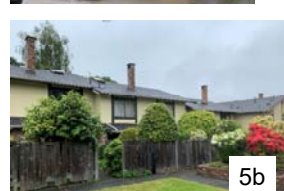
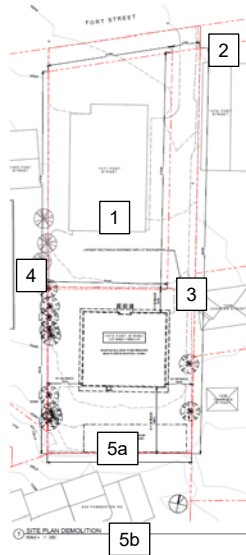
1475 Fort Street



3

Neighbouring Properties

4



4

Consultation

5



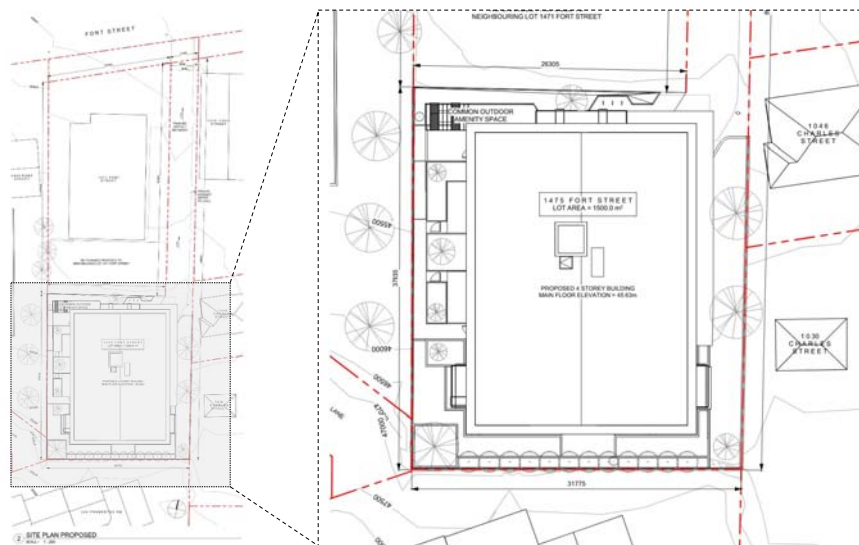
- Mailed notices sent to all owners and residents within 50m of 1475 Fort Street
- Online comment forms received via the Development Tracker
- Applicant hosted online community meeting



5

Site Plan

6



6

Elevations

7



7

Elevations

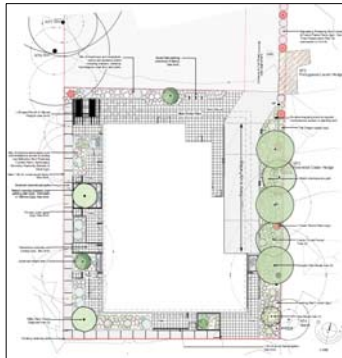
8



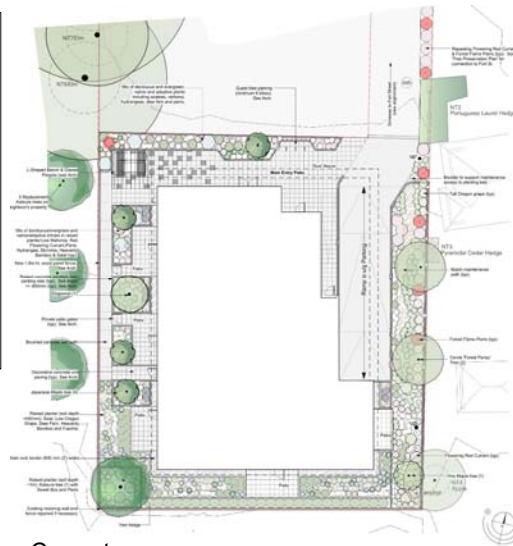
8

Landscape Plan

9



Previous



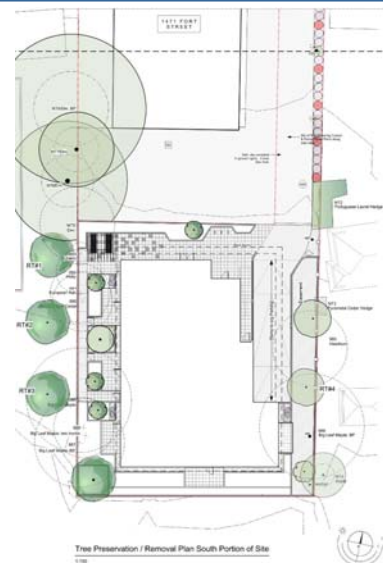
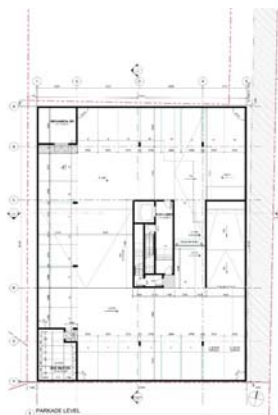
Current



9

Tree Preservation

10



Tree Preservation / Removal Plan South Portion of Site



10

Renderings

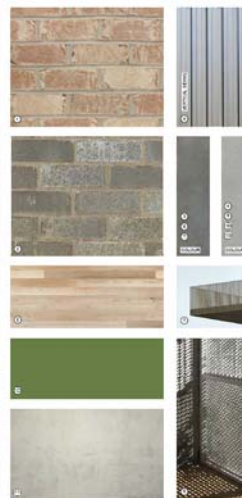
11



11

Materials

12



- MATERIALS LIST**
- ① TUMBLED BRICK LIGHT
 - ② SMOOTH BRICK (DARK)
 - ③ METAL PANEL (DARK GREY)
 - ④ PRE-PANDED VERTICAL METAL (DARK GREY)
 - ⑤ RED BRICK (DARK GREY)
 - ⑥ PRE-PANDED ALUMINUM (DARK GREY)
 - ⑦ VISION GLASS (DARK GREY)
 - ⑧ PRE-PANDED METAL (DARK GREY)
 - ⑨ PRE-PANDED METAL (DARK GREY)
 - ⑩ ARCHITECTURAL CONCRETE (DARK GREY)
 - ⑪ PRE-PANDED ALUMINUM (DARK GREY)
 - ⑫ PRE-PANDED METAL (DARK GREY)



12