

1

# Heritage Designation Application No. 000194 for 1611 Stanley Avenue



1

## Proposal

2

To designate the exterior of the house located at 1611 Stanley Avenue

**Date of Construction:** 1910

**Builder:** Sidney Hayward

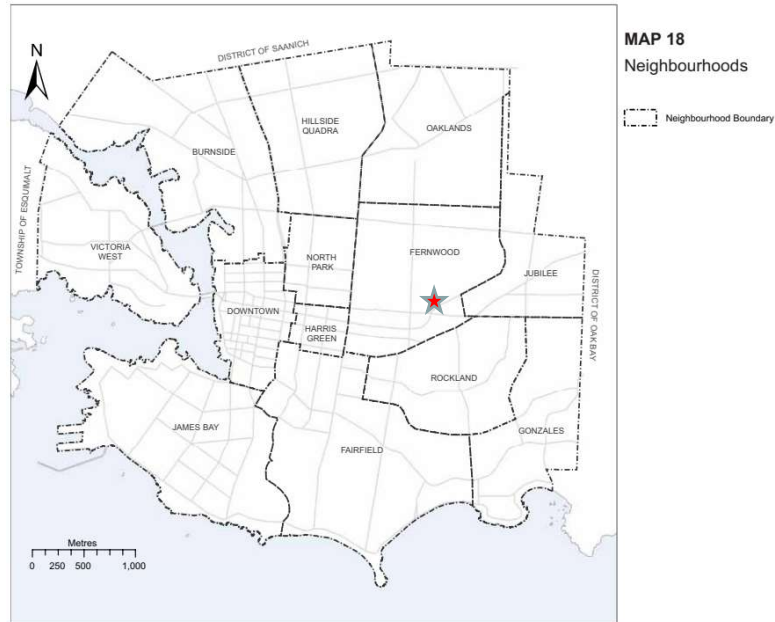
**Neighbourhood:** Fernwood



2

## Location

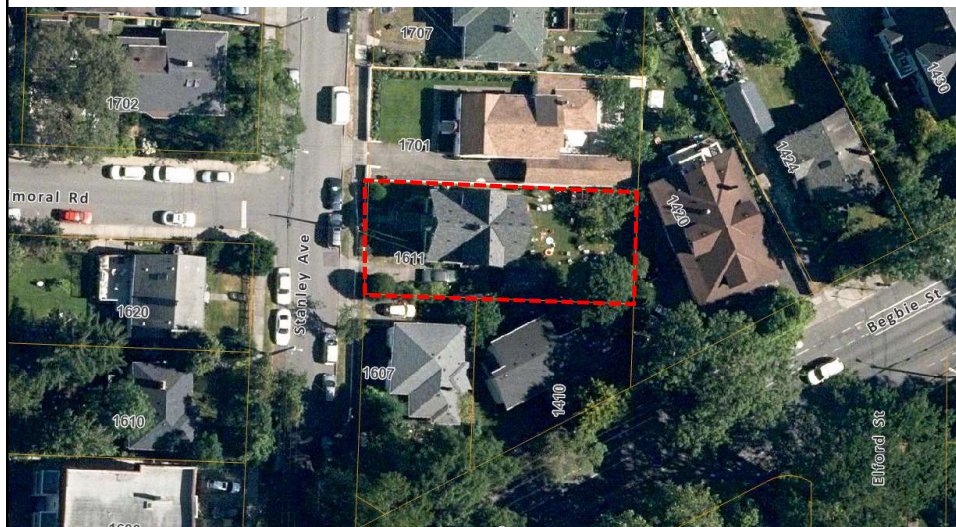
3



3

## Aerial

4



4

## Designation Assessment

5

A heritage property is one with

“sufficient **heritage value** or **heritage character** to justify its conservation”

**Heritage Value:** historical, cultural, aesthetic, scientific or educational worth or usefulness of property or an area.

**Heritage Character:** the overall effect produced by traits or features which give property or an area a distinctive quality or appearance.

(*Local Government Act, Section 611*)



5

## Heritage Value

6

- Associated with the subdivision and development of Benjamin Pearse's *Fernwood Estate* to create lots for middle-class housing near the business district.
- Representative example of speculative housing built during the pre-WW1 building boom
- Good example of an Edwardian Vernacular House



Rear Elevation

6

## Heritage Character

7

### Character Defining Elements

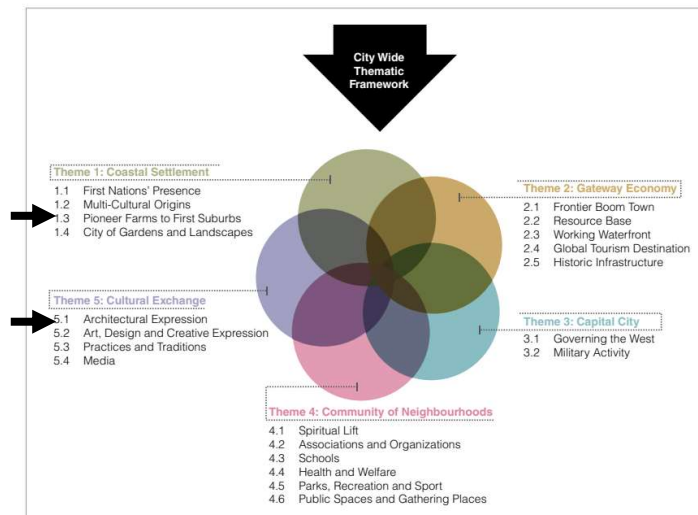
- Residential form, scale and massing
- Inset corner entrance porch with classical column
- Wood frame construction with bevelled siding, shingles in the upper gables, corner boards and window trim
- Original window assemblies
- Wood panelled and glazed front door
- Art glass windows



7

## Victoria Thematic Framework

8



8

## Staff recommendation

9

That Council approve  
the designation of the  
property located at 1611  
Stanley Avenue....

