

# Expansion of Pedestrian Space in Clover Point Park

February 11, 2021



1

## Background

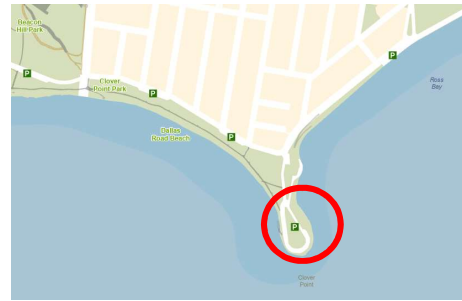
- Pump Station project has resulted in improvements for users of Clover Point Park
- Access to the waterfront, without vehicle traffic, has been important during the pandemic
- By maintaining a pedestrian priority access, the City takes an important step towards enhancing the value of this destination park



2

## Location

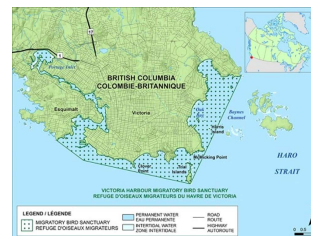
- Clover Point Park extends from Cook St to Ross Bay
- 4.2 hectares (10.4 acre) in size
- Park access via multi-use trails, roadway
- CRD project completion date: spring, 2021
- Loop road closed to vehicles (2019-21)



3

## Context

- Parks and Open Spaces Master Plan:
  - Protect the Environment
    - *Recognize the importance of native ecosystems to biodiversity, sense of place and quality of life*
  - Foster Engaging Experiences for Everyone
    - *Continually strive to use space efficiently and to create multifunctional, flexible spaces to meet changing demands*



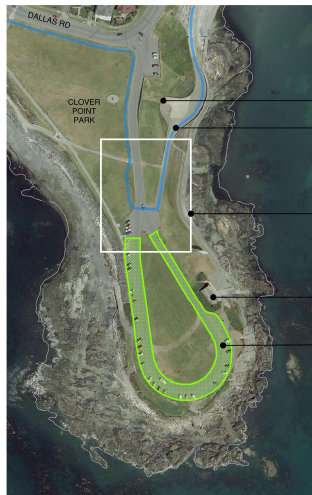
4

# Proposal

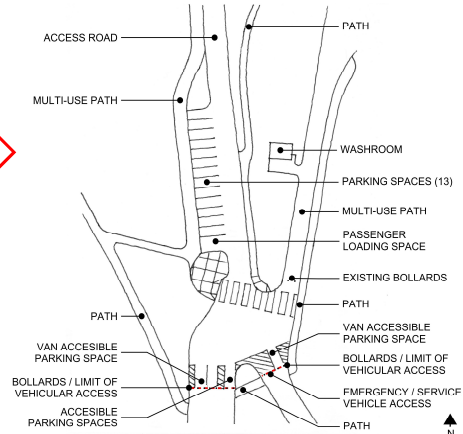
- Provide approximately 3,600m<sup>2</sup> (38,750 ft<sup>2</sup>) additional space for pedestrians
  - Close the loop roadway to vehicles
  - Introduce temporary furnishings, seating, tables, colourful asphalt paint
  - Locate 17 parking spaces, including 4 designated accessible, north of the loop
  - Plan for future improvements with the community



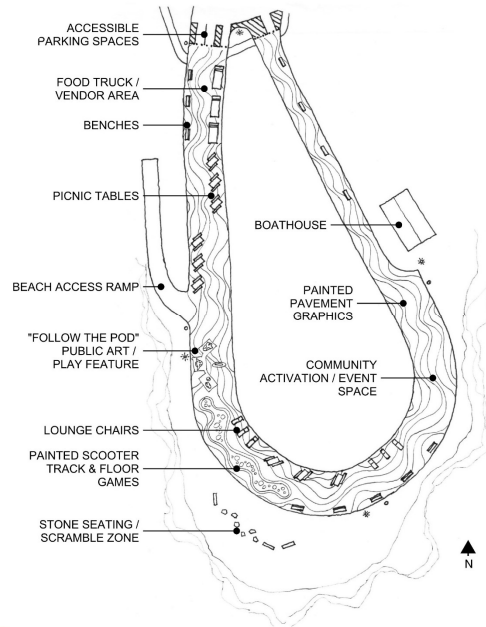
# Proposal



## Concept design as shown in Attachment A



# Proposal



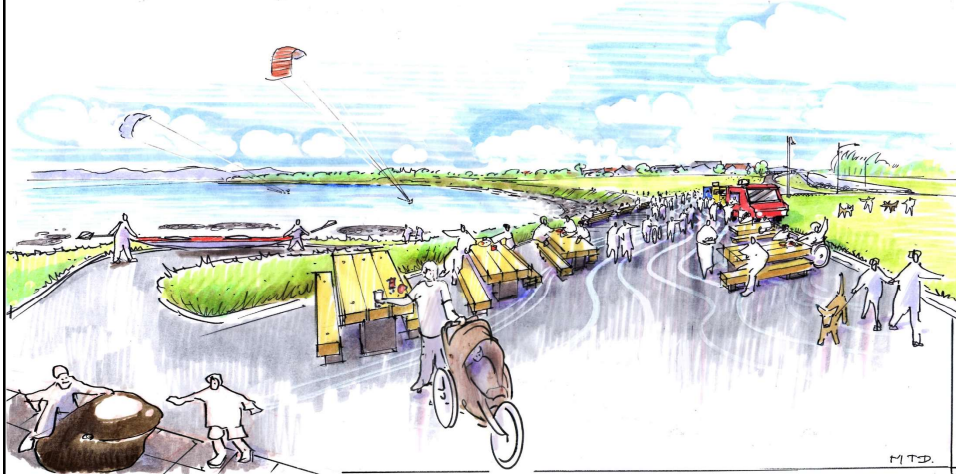
7

# Clover Point Park



8

# Clover Point Park



9

# Clover Point Park



10

## Recommendation

That Council:

1. Approve the increase of pedestrian priority space in Clover Point Park, including the closure of the loop roadway, as outlined in Attachment A.
2. Direct staff to add \$250,000 to the 2021 Financial Plan for the Clover Point Park Pedestrian Space Expansion with funding from the Building and Infrastructure Reserve.