






Solid Waste Management Plan

City of Victoria Committee of the Whole
 Presentation by Russ Smith
 March 25, 2021

1



SWMP Planning Process

STAGE 1 INITIATE THE PROCESS	STAGE 2 SET THE DIRECTION 2012-2014	STAGE 3 EVALUATE OPTIONS 2019	STAGE 4 PREPARE AND ADOPT 2020
<ul style="list-style-type: none"> ✓ Regional Board Resolution <ul style="list-style-type: none"> • 2011 & 2017 ✓ Stakeholder Notification <ul style="list-style-type: none"> • notifications to recruit Solid Waste Advisory Committee (SWAC) members (2017) ✓ Establish planning team and committees <ul style="list-style-type: none"> • SWAC members appointed (2018) ✓ Develop budget <ul style="list-style-type: none"> • funding in Environmental Resource Management budget ✓ Design the consultation process framework 	<ul style="list-style-type: none"> ✓ Prepare background Information <ul style="list-style-type: none"> • 2012 existing system report • 2012 survey • issues memo • seven technical memos • 2014 steering committee workshop <li style="text-align: center;">2018 ✓ Assess current solid waste system <ul style="list-style-type: none"> • 2018 existing system report ✓ Consider trends ✓ Identify principles, goals & targets <ul style="list-style-type: none"> • approved by SWAC, Environmental Services Committee & CRD Board ✓ Develop consultation strategy <ul style="list-style-type: none"> • approved by SWAC, Environmental Services Committee & CRD Board ✓ Consult the public 	<ul style="list-style-type: none"> ✓ Develop potential strategy options <ul style="list-style-type: none"> • long list of options • short list of options ✓ Assess the financial and administrative impacts ✓ Consult the public on the strategies and target <ul style="list-style-type: none"> • directed by CRD Board 	<ul style="list-style-type: none"> ✓ Review consultation results and decide direction to proceed with preparing draft plan ✓ Prepare draft plan ✓ Consult the public on the draft plan <div style="text-align: center; margin: 10px 0;"> <p style="color: #f4a460; font-weight: bold;">WE ARE HERE</p> <div style="border: 2px solid #f4a460; border-radius: 50%; padding: 10px; display: inline-block;"> <p style="color: white; font-weight: bold;">Prepare plan for submission</p> </div> </div> <div style="text-align: center; margin: 10px 0;"> <p style="color: white; font-weight: bold;">2021</p> <ul style="list-style-type: none"> • Submit plan for approval • Ministry review and approval • CRD Board adoption of the plan </div>

2

Where We Are Today

CRD

- **Phase II consultation**— closed on February 15 and included:
 - Virtual public information sessions
 - Presentations to First Nations and municipalities
- **Plan finalization** - March 2021
- **Board endorsement of plan** - April/May 2021
- **Submission to Province** - June 2021



2

3

Guiding Principles + 5R Hierarchy

CRD



 Solid Waste
Management Plan

CRD

3

4

Plan Goals

CRD

- To surpass the provincial per capita waste disposal target*
- To extend the life of Hartland Landfill to the year 2100+
- To have informed citizens that participate effectively in proper waste management practices
- To ensure our solid waste services are financially sustainable



*Target is 250kg/person/year, aspirational goal is 125 kg

4

5

Plan Targets

CRD

SHORT TERM (3 YEARS)	MEDIUM TERM (5 YEARS)	LONG TERM (10 YEARS)
<ul style="list-style-type: none"> • Construction, renovation and demolition waste • Organic waste from single-family, multi-family and ICI sectors 	<ul style="list-style-type: none"> • Recyclables and organic waste from single-family, multi-family and ICI 	<ul style="list-style-type: none"> • Extended Producer Responsibility for ICI-generated paper, packaging and textiles • Refine programs to increase performance for all sectors
340 kg	285 kg	250 kg

 Solid Waste
Management Plan

CRD

5

6

Plan Strategies



Strategies		
REDUCTION & REUSE	RECYCLING	RECOVERY & RESIDUALS MANAGEMENT
<ol style="list-style-type: none"> 1. Continue and Enhance Education Programs 2. Encourage Waste Prevention 3. Support Reduction of Avoidable Food Waste 4. Support Reuse Activities in the Region 5. Support Local Governments in Working Towards Zero Waste and a Circular Economy 6. Continue and Enhance Policy Development 	<ol style="list-style-type: none"> 7. Increase Residential Diversion 8. Increase Multi-Family Diversion 9. Increase Industrial, Commercial and Institutional Diversion 10. Support Existing and New Extended Producer Responsibility Programs 11. Increase Organics Diversion and Processing Capacity 12. Increase Construction, Renovation, and Demolition Material Diversion 13. Encourage Proper Public Space Waste Management Activities 	<ol style="list-style-type: none"> 14. Optimize Landfill Gas Management 15. Enhance Hartland Disposal Capacity

Actions to support each strategy are listed in the draft report

6

7

Municipal Collaboration Opportunities



- Reduce and reuse education campaigns
- Multi-family and ICI diversion
- Organic material diversion, including compostable food service ware
- Construction, renovation and demolition material diversion
- Waste management facility licensing
- Illegal dumping prevention
- Procurement policies



7

8

Recovery and Residuals

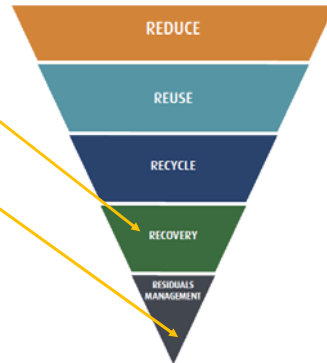
CRD

Strategy #14 actions:

- Capture landfill gas for beneficial use

Strategy #15 actions:

- Review ban enforcement levels
- Operate Hartland Landfill using best practices
- Develop design options to maximize disposal capacity
- Research and investigate emerging technologies

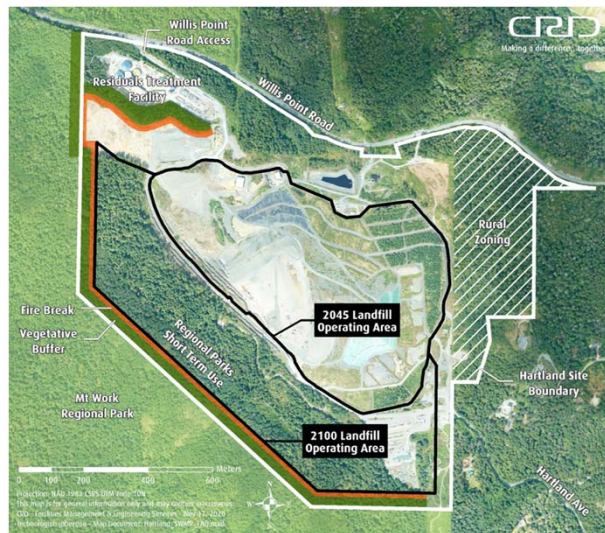


8

9

Hartland 2100 Design Concept

CRD



9

10

Questions?

CRD



10

11

Thank you

CRD

Next steps:

- Input is currently being compiled and will be considered by the CRD Board in May
- For more information, visit crd.bc.ca/rethinkwaste



Solid Waste
Management Plan

11

12