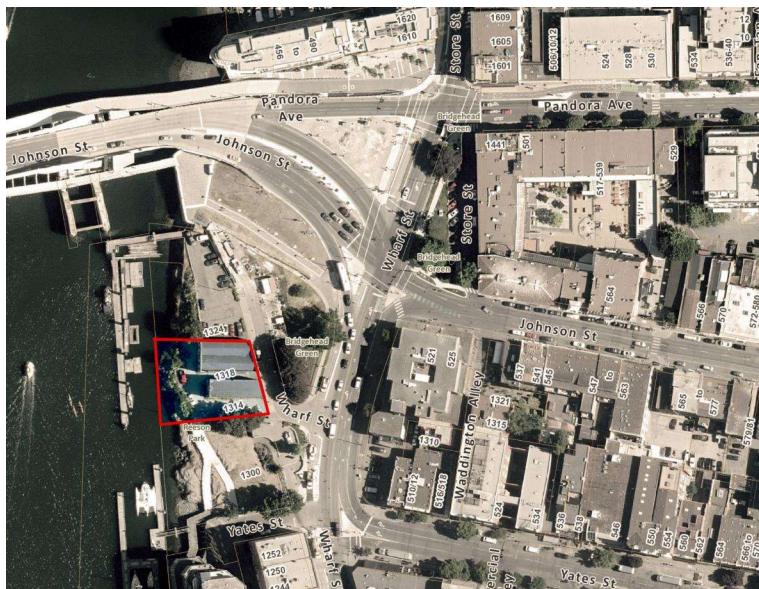

UPDATE REPORT
Rezoning Application No. 00701, and
Heritage Alteration with Variances Application
No.00236,
1314 and 1318 Wharf Street, Victoria, BC



1

Aerial Map



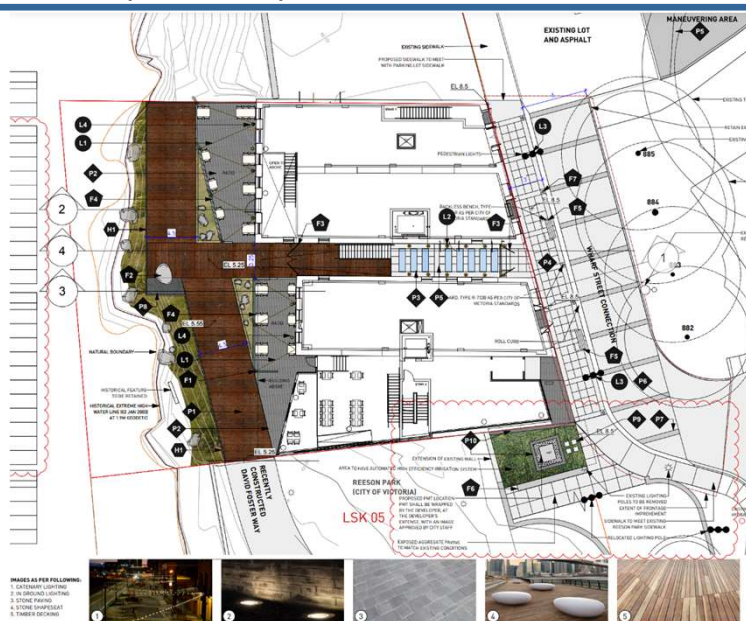
2

Existing Site

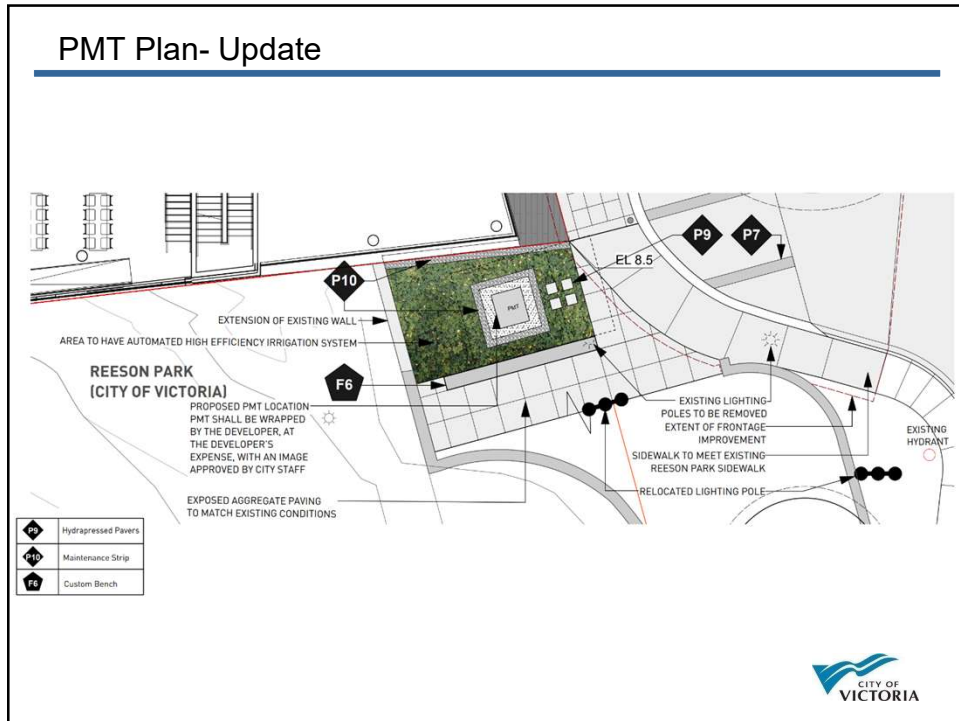


3

Landscape Plan- Update



4

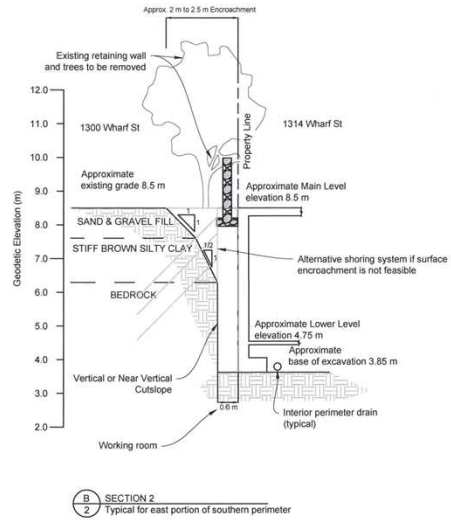


5



6

Geotechnical Plan



7

End



8

Additional Information - Renders



9

Additional Information - Renders



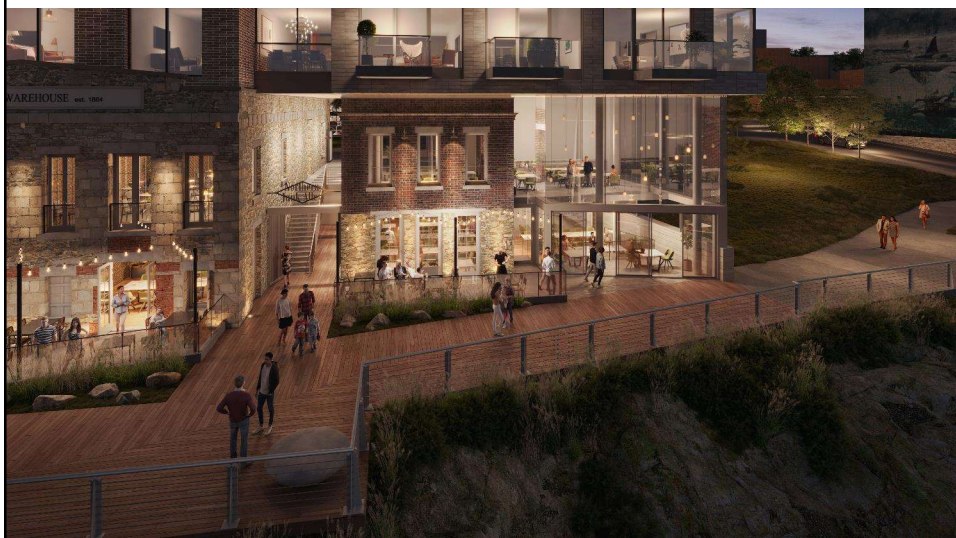
10

Additional Information - Renders



11

Additional Information - Renders



12

Additional Information - Renders



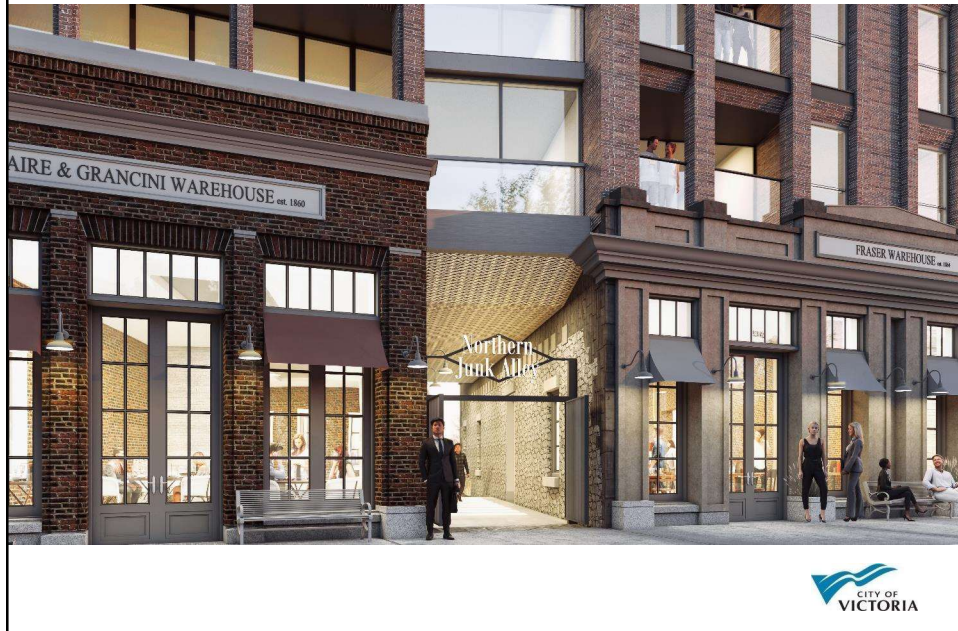
13

Additional Information - Renders



14

Additional Information - Renders



15

Additional Information - Neighbouring Properties

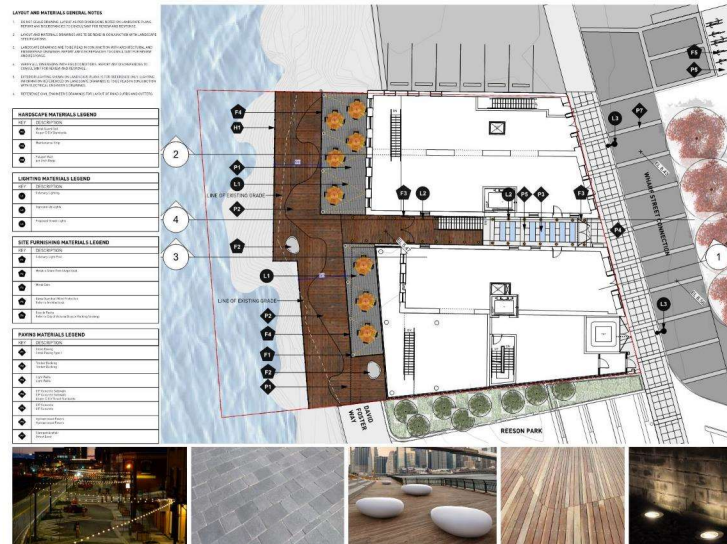


Reeson Park



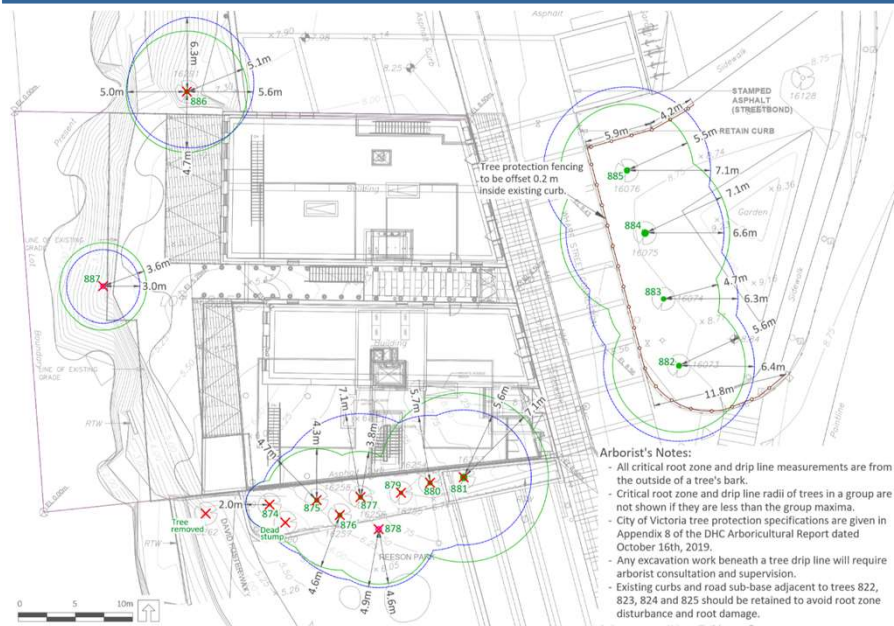
16

Additional Information - Previous Landscape Plan



17

Additional Information- Survey Plan



18