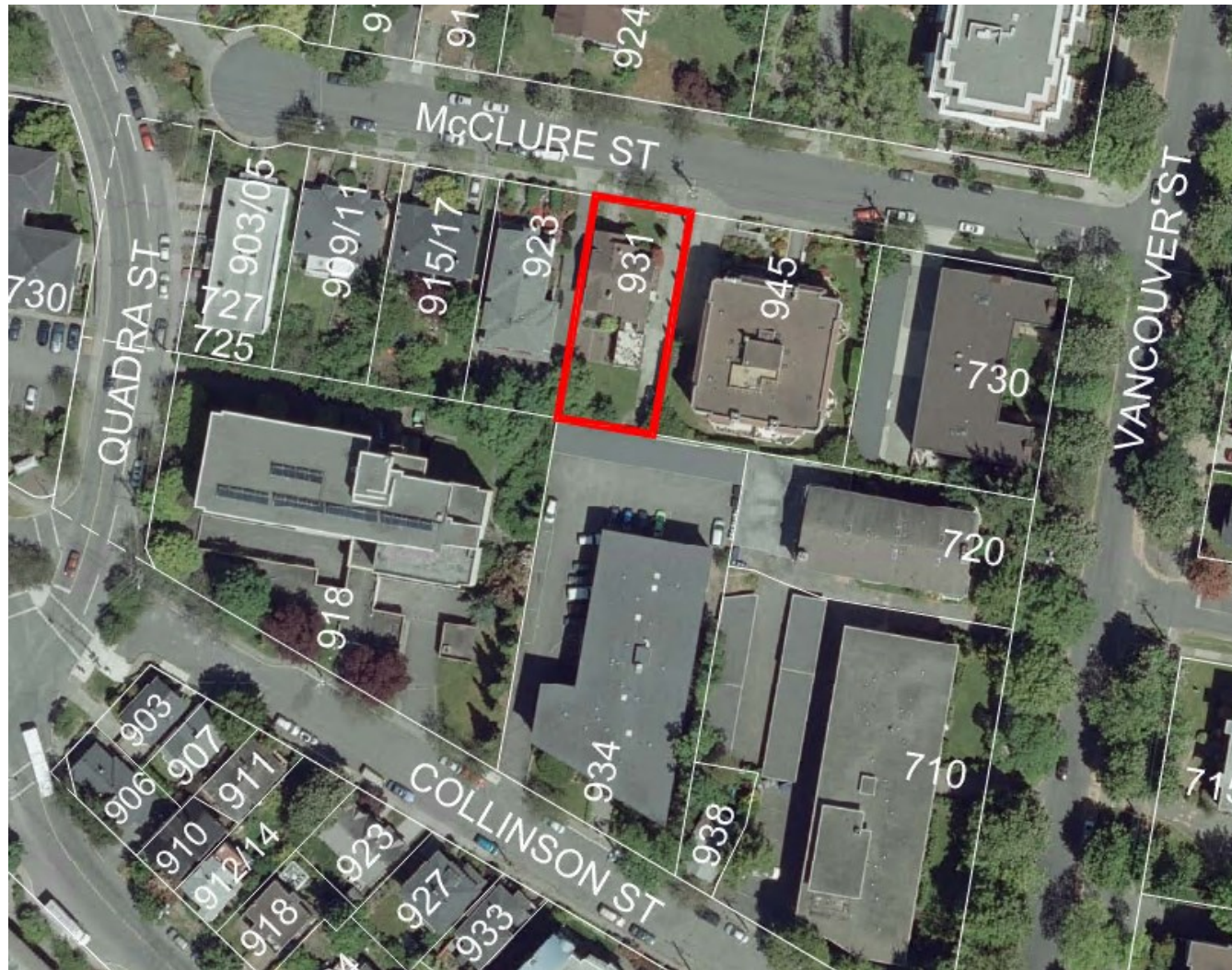


Rezoning and Development Permit with Variances Application for 931 McClure Street







931 McClure Street





Neighbouring Properties

7



945 McClure Street



923 McClure Street



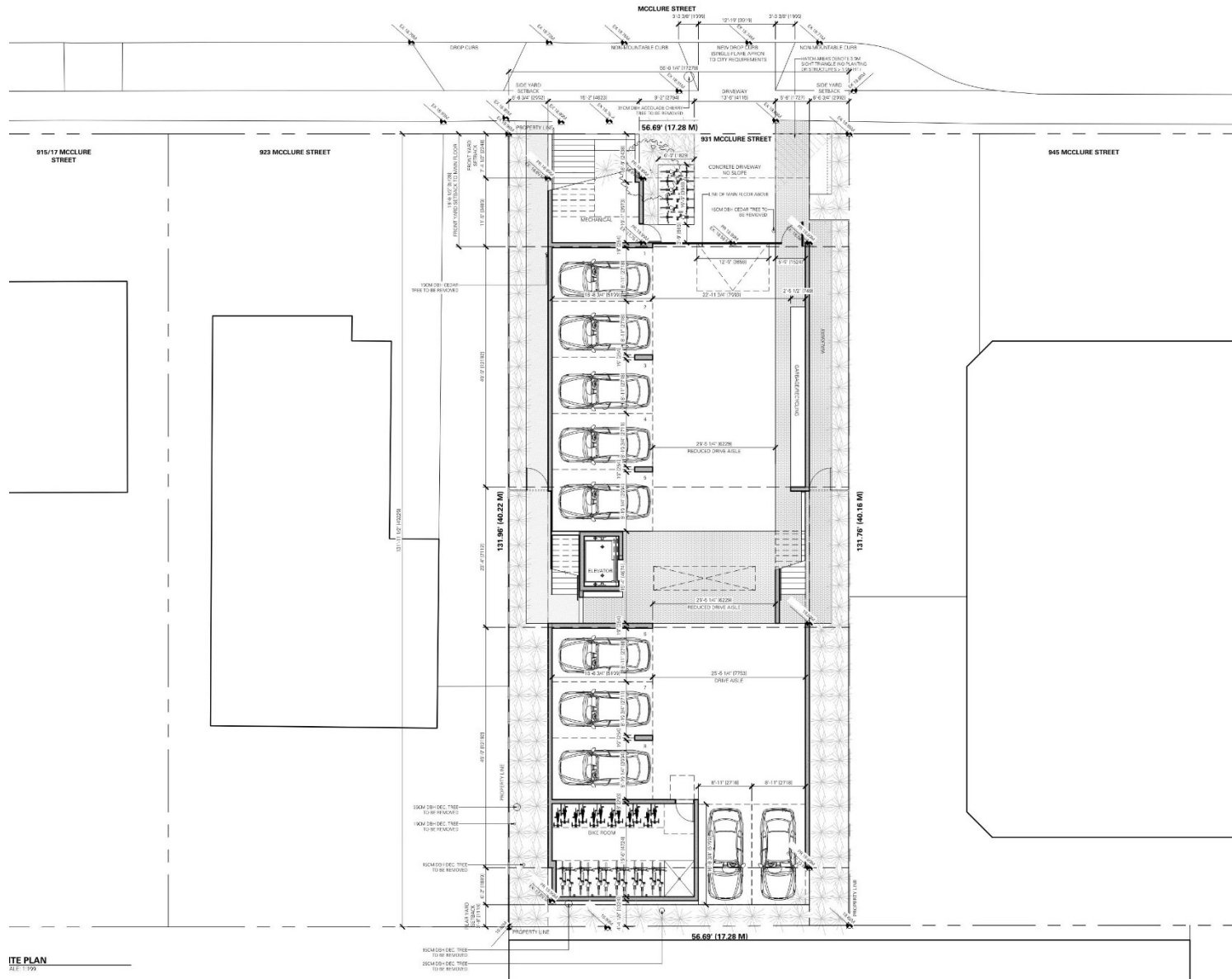
924 McClure Street



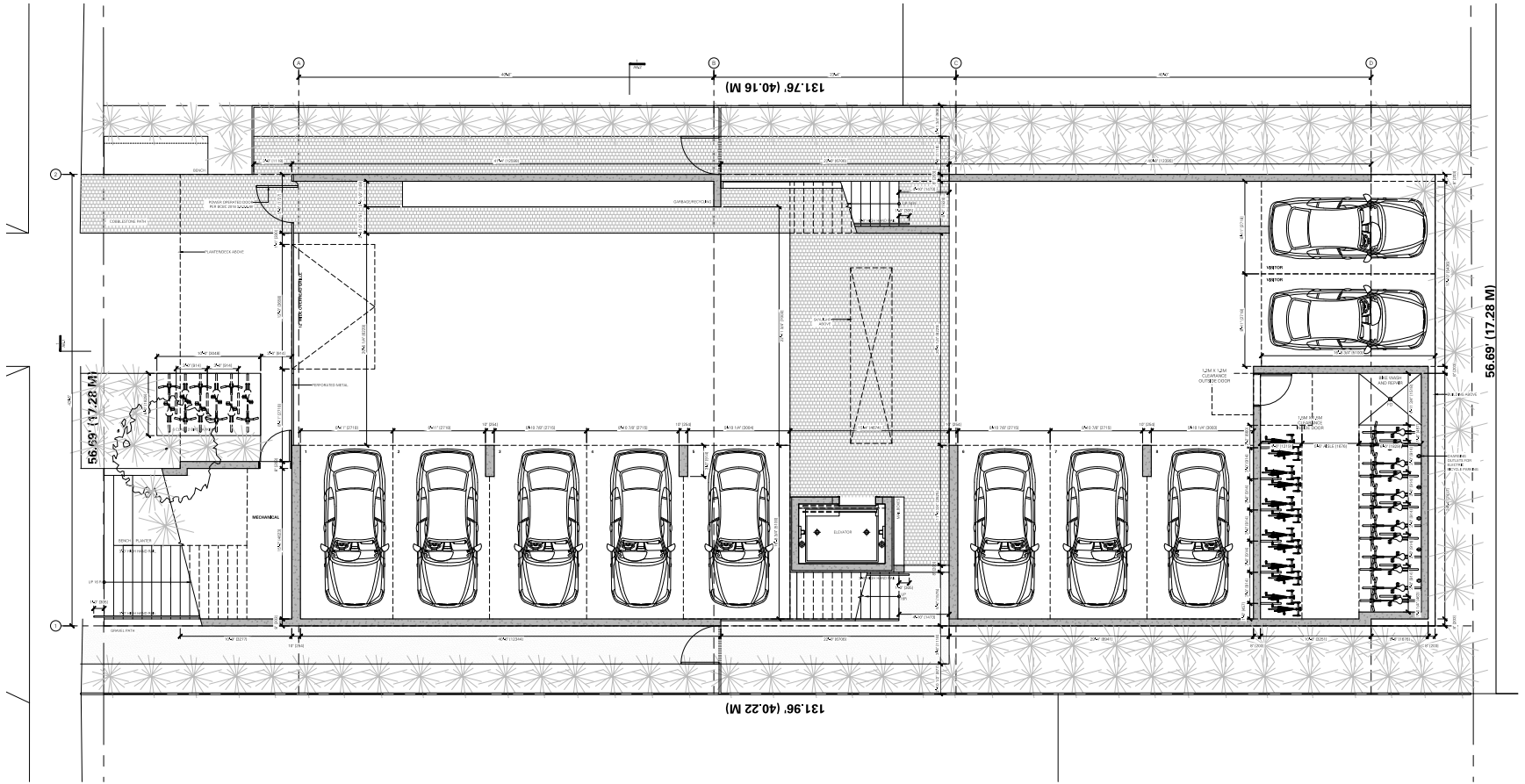


Rendering of approved development at 924 McClure Street (Mount St. Angela Site)





Main Level / Parking Plan



PARKING PLAN

D'Arcy Jones Architects Inc.
100-1111 Broadway Street
Vancouver BC V6T 1A2
T 604 683 2255
F 604 683 2231
info@djai.com

Copyright reserved. All parts of this drawing are the exclusive property of D'Arcy Jones Architects Inc. and shall not be used without permission in print or in digital.

DO NOT SCALE THESE DRAWINGS

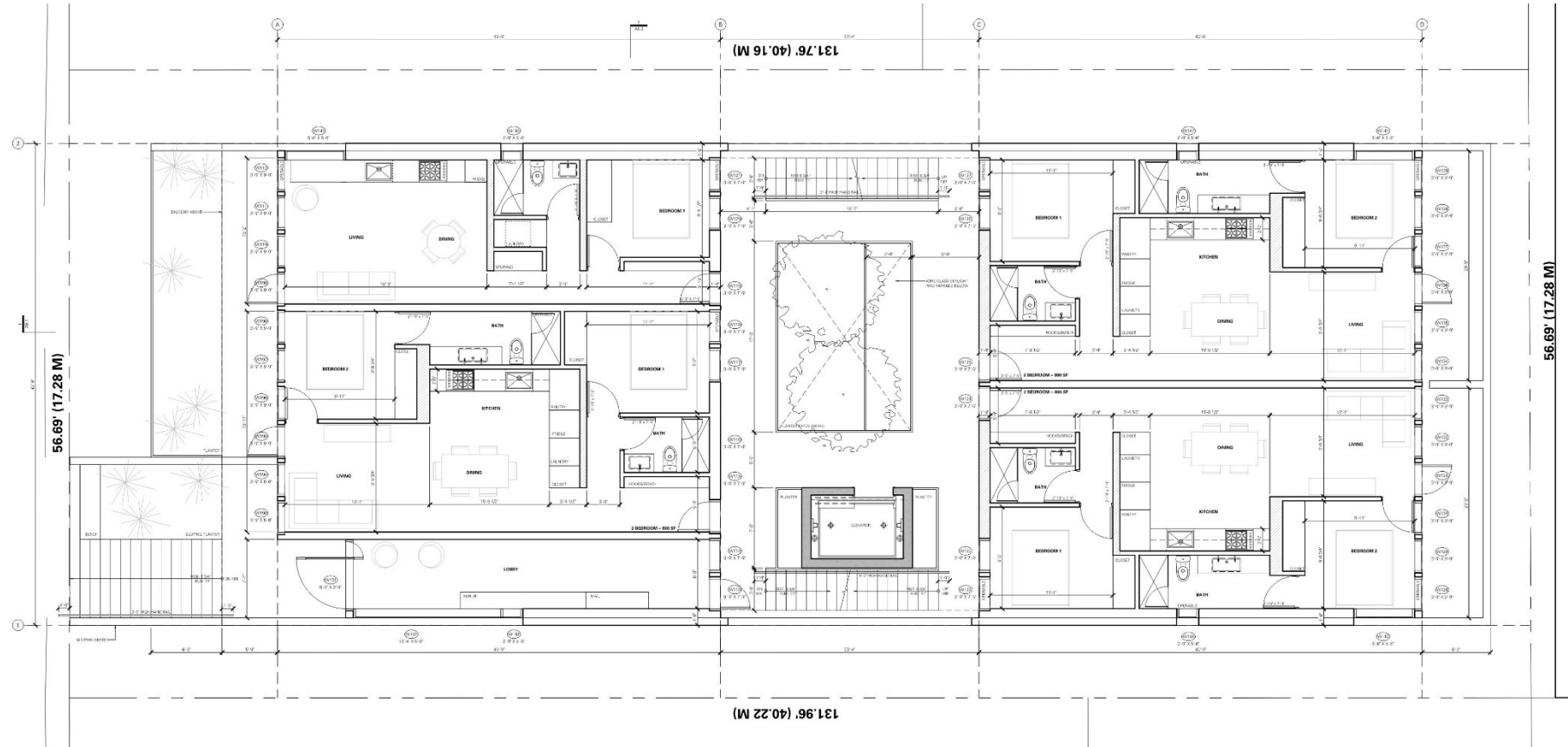
All dimensions shall be subject to verification by the architect. Any information shall be subject to the attention of the architect. Any error or omission in this drawing shall be subject to the attention of the architect. D'Arcy Jones Architects Inc. for distribution and revision.

REVISIONS:
A. CALL
B. REVISIONS
C. CALL
D. REVISIONS
E. REVISIONS
F. REVISIONS
G. REVISIONS

SCALE: 1/8" = 1'-0"
DATE: 08/04/2018
DRAWN: JH
CHECKED: JH
REVISION: 1
ISSUE: 1
CONSULTANT:

Second Level Plan

12





730 VANCOUVER ST

945

931

923

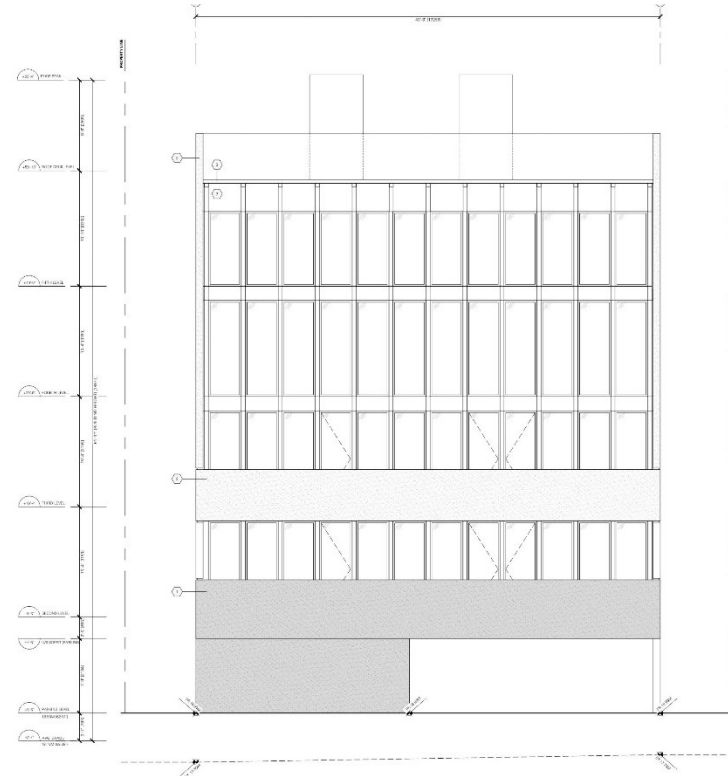
915/917

909/911

903.905

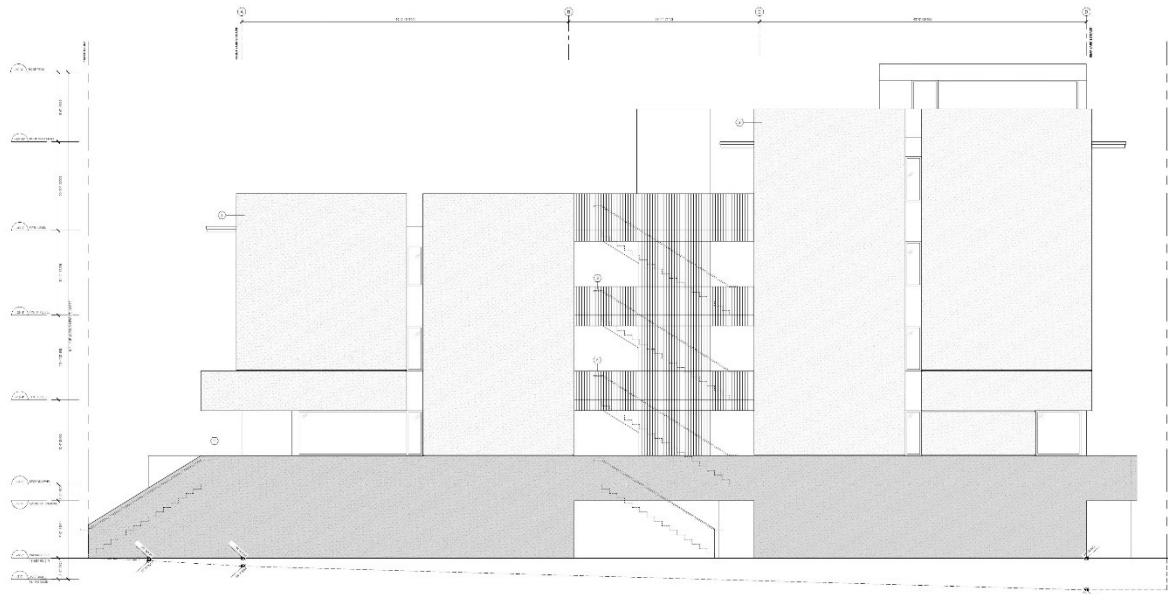


North (Front)

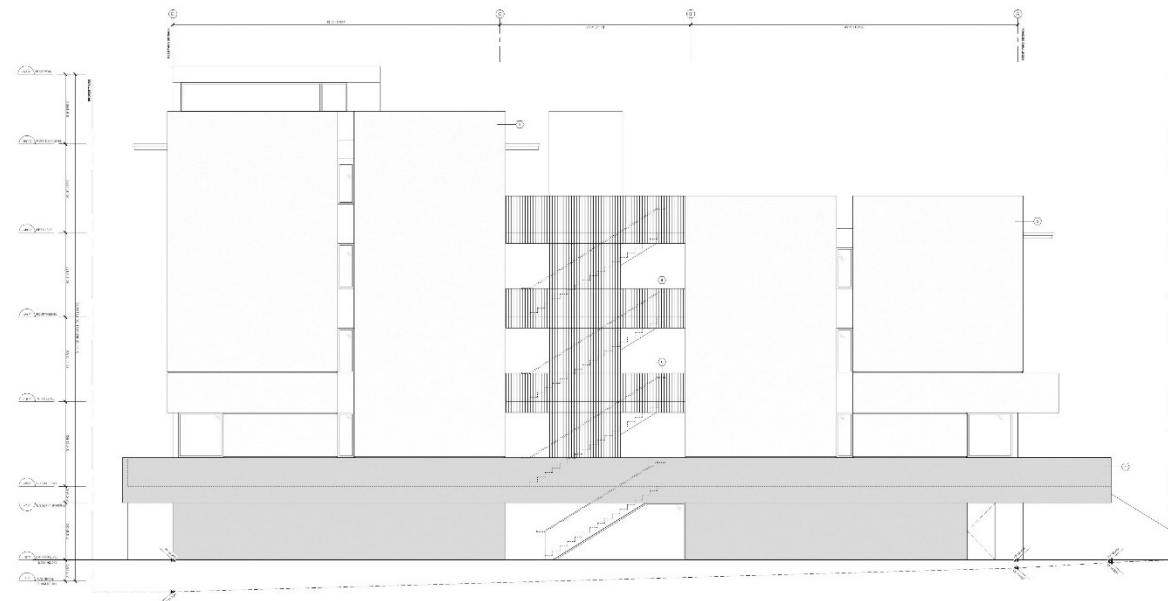


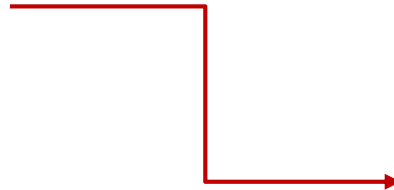
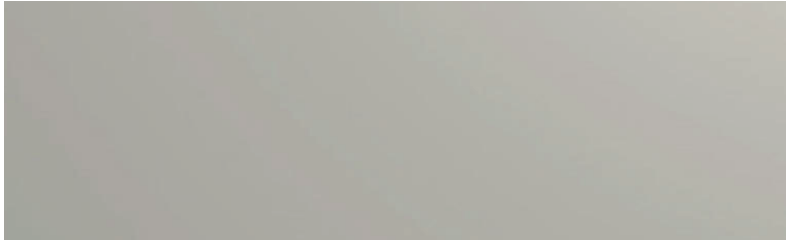
South

West



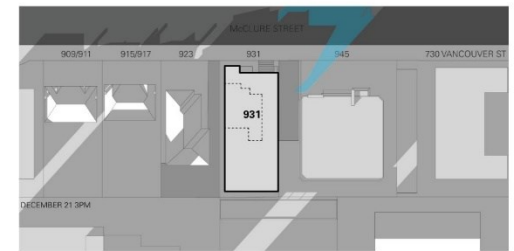
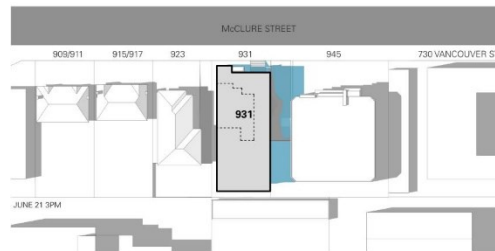
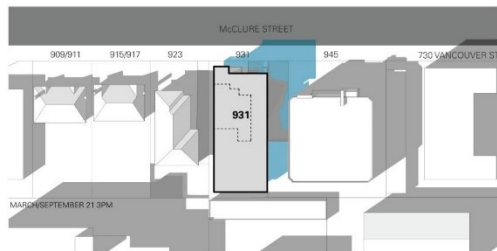
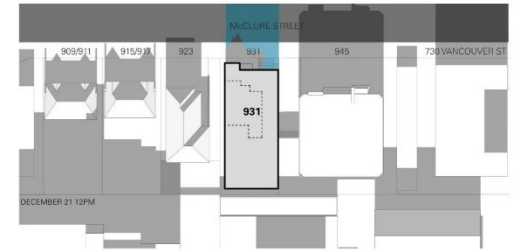
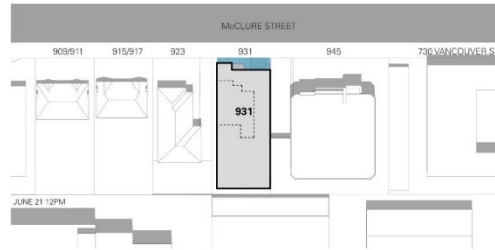
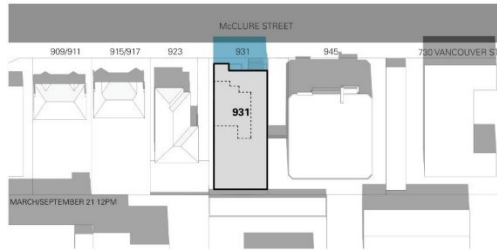
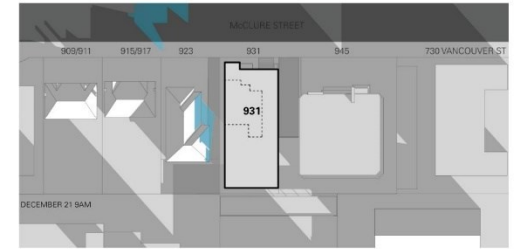
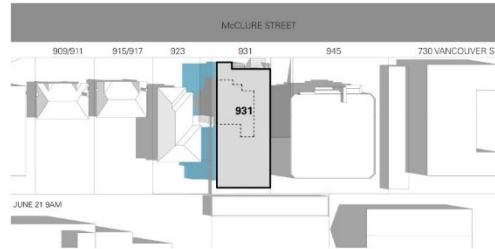
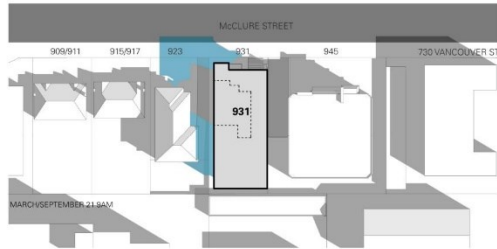
East

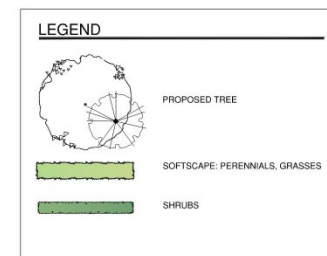
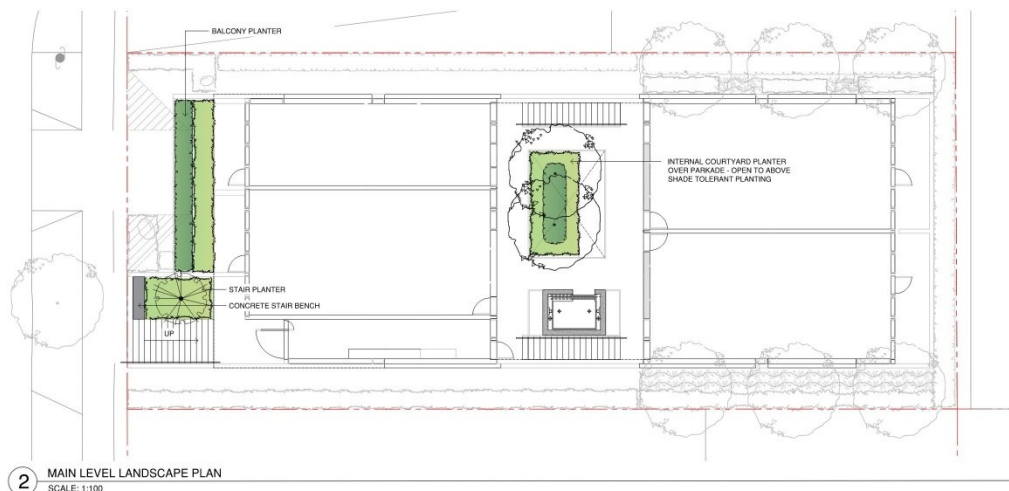
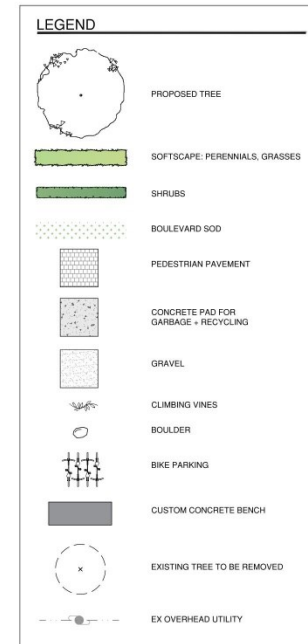
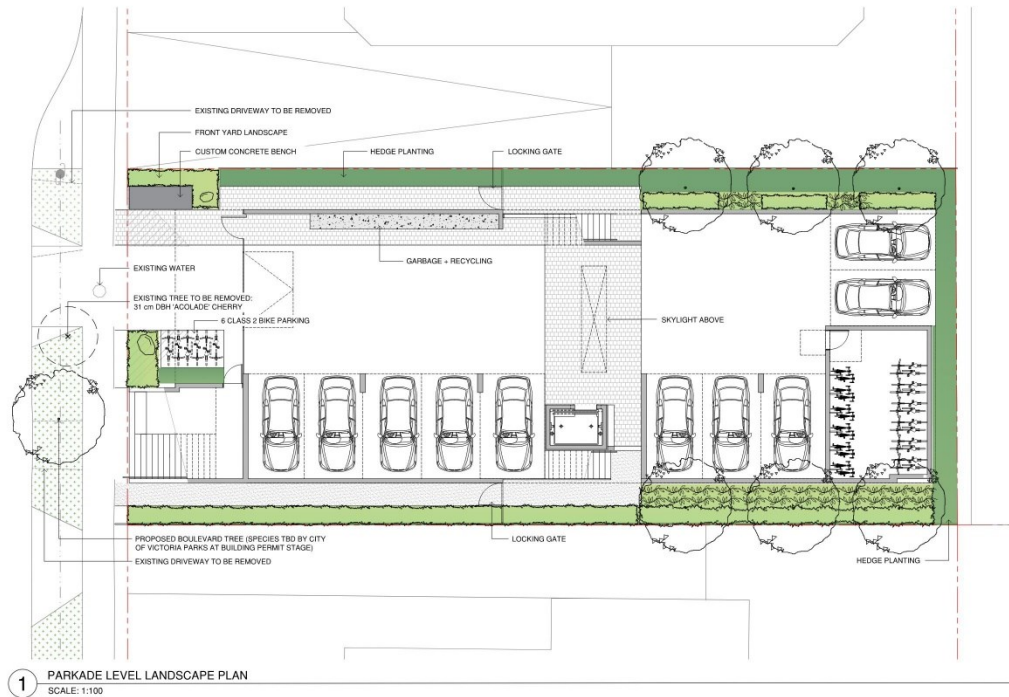


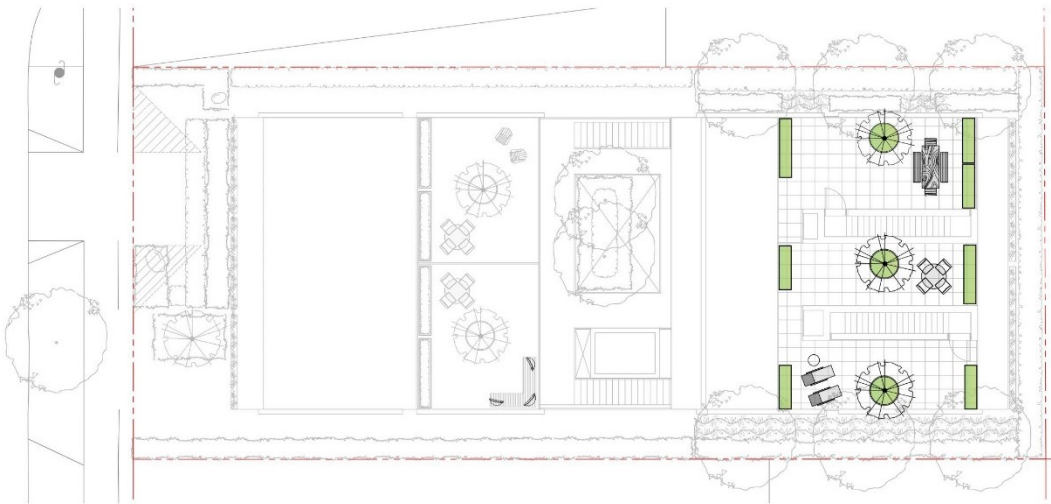
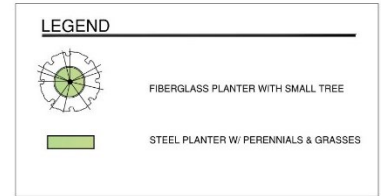
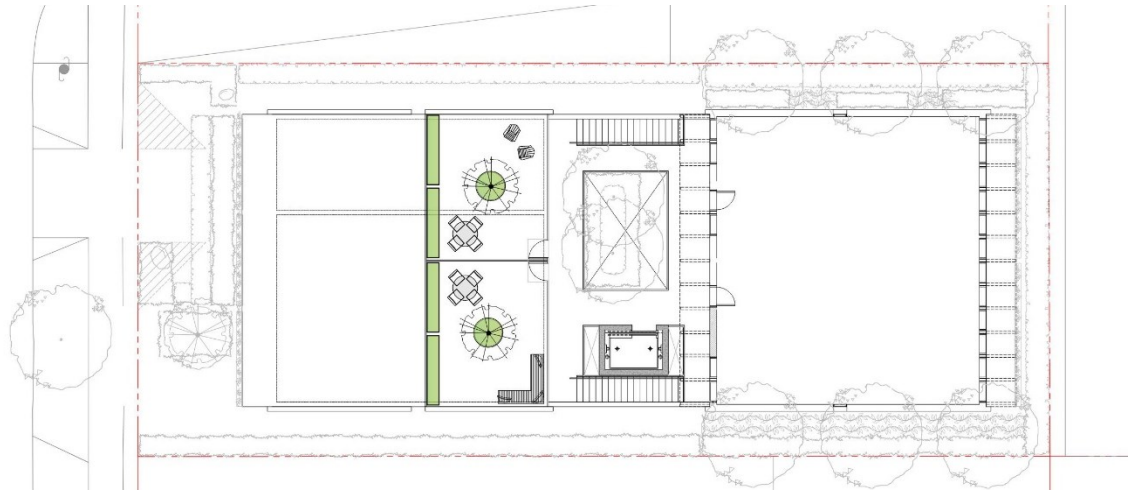


Shadow Plan

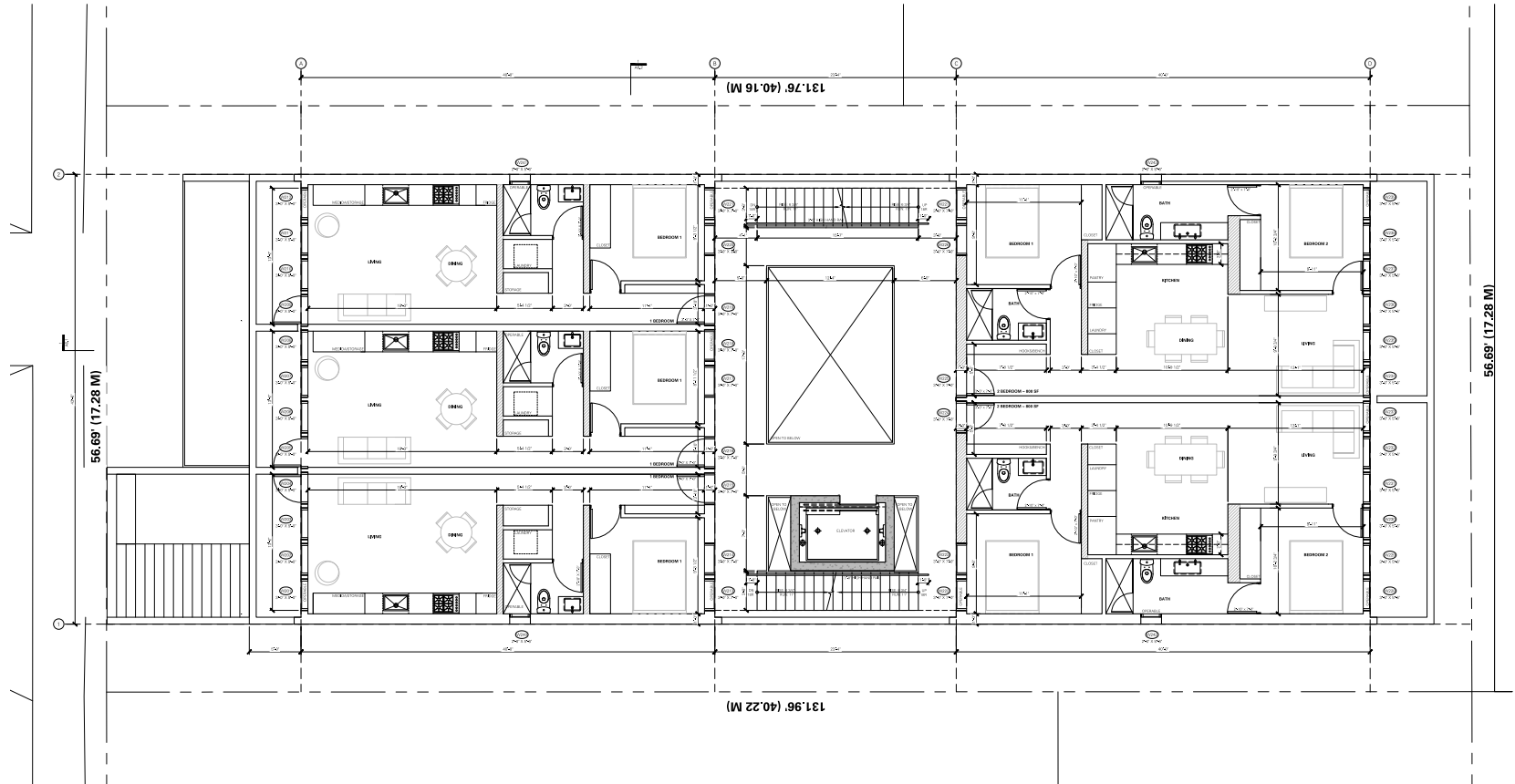
16











THIRD LEVEL PLAN

D'Arcy Jones Architects Inc.

305-475 Broadway East
Victoria BC V8T 1G2
T 250-699-2225
info@djai.com

Copyright reserved. All parts of this drawing are the exclusive property of D'Arcy Jones Architects Inc. and shall not be used without permission, in whole or in part.

DO NOT SCALE THESE DRAWINGS

All dimensions to be verified by contractor, trades or suppliers. Any discrepancies shall be reported to the designer of the drawings. Any errors or omissions on this drawing shall be reported to D'Arcy Jones Architects Inc. by the trades and suppliers.

REVISION

A. CALLING
B. REVISIONS
C. REVISIONS
D. REVISIONS
E. REVISIONS
F. REVISIONS

SCALE

1/8"=1'-0"
1/4"=1'-0"
1/2"=1'-0"
3/4"=1'-0"
1"=1'-0"

DATE

2023-01-10

DRAWN

2/1

CHECKED

2/1

DESIGN

2/1

ISSUE

2/1

CONSULTANT

931 MCCLURE STREET

VICTORIA BC

A2.3

THIRD LEVEL PLAN

21



22



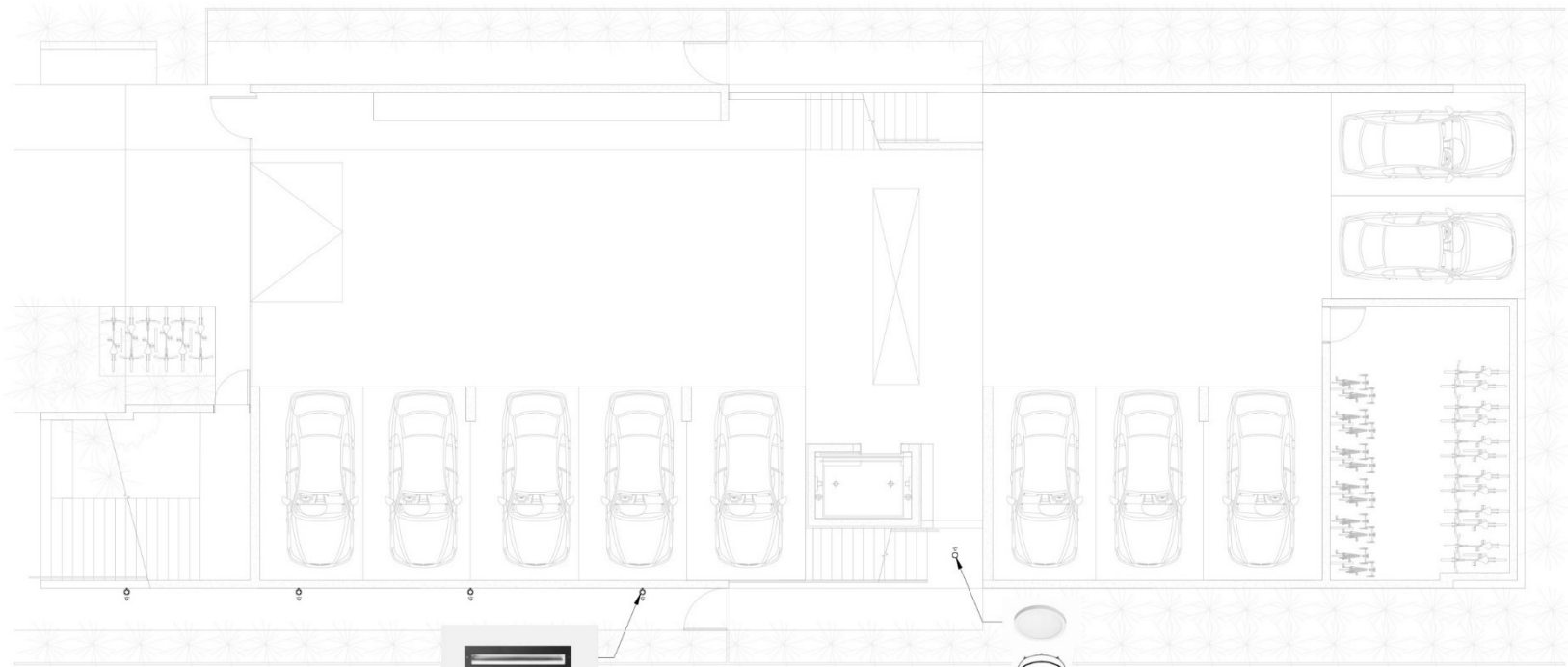
CITY OF
VICTORIA

23



ROOF LEVEL PLAN





LOAD CALCULATION

900 MILLIMETER (36 INCHES)

BASE LOAD

WALLS

DOOR FRAME @ 20%

ENTER LOAD @ 20%

1 x 12 @ 10% = 12.00W

2 x 12 @ 10% = 24.00W

2 x 12 @ 10% = 24.00W

10 x 12 @ 10% = 120.00W

BASE LOAD TOTAL = 180.00W

20.00W @ 10% = 2.00W

20.00W @ 10% = 2.00W

BY CHARGES

1.00W = 1.00W

HOUSE (LIFT)

1.00W = 1.00W

RETRACTOR SWG

1.00W = 1.00W

MECHANICAL

1.00W = 1.00W

1.00W = 1.00W

22.00W @ 10% = 2.20W

TOTAL 1.72.00W + 10.00W + 10.00W + 24.00W + 12.00W

48.00W @ 10% = 4.80W + 12.00W

60.00W @ 10% = 6.00W

SEE AREA PROTECTION

RECESSED LED
STEP LIGHTS

1 PARKING LEVEL ELECTRICAL LAYOUT

NOTES:

1. ALL LOTS RELATED TO HAVE DOWNWARD AND COMPLETE WITH LUMINOUS
AS NEEDED TO AVOID LIGHT POLLUTION WITH NEIGHBORING PROPERTIES.

SURFACE MOUNTED
LED DOWN LIGHTS
CW Baffle SHROUD

CONSULTANT:



300-115 Broadway East
Victoria BC V8T 1G2
250.686.6622 | www.aesbc.com
CALIBRE | HANDBOOK | WEBSITE

D'Arcy Jones Architects Inc.

300-115 Broadway East
Victoria BC V8T 1G2
250.686.6622 | www.aesbc.com
CALIBRE | HANDBOOK | WEBSITE

Copyright reserved. All parts of this drawing are the
exclusive property of AES Engineering and shall not be used
without permission in part or in whole.

All dimensions to be verified by construction. Dates of
revision. Any dimensions shall be brought to the
attention of the Engineer. All dimensions or materials on this
drawing shall be reported to AES Engineering for
coordination and review.

REVISION:

A ISSUED FOR

DATE: 01-20-2021
SCALE: AS NOTED
DATE: JANUARY 2021
DRAWN: BUSH
CHECKED: HAY
REVISION: REV
ISSUED FOR: 100-100-100
JOB NUMBER: 1-20-204

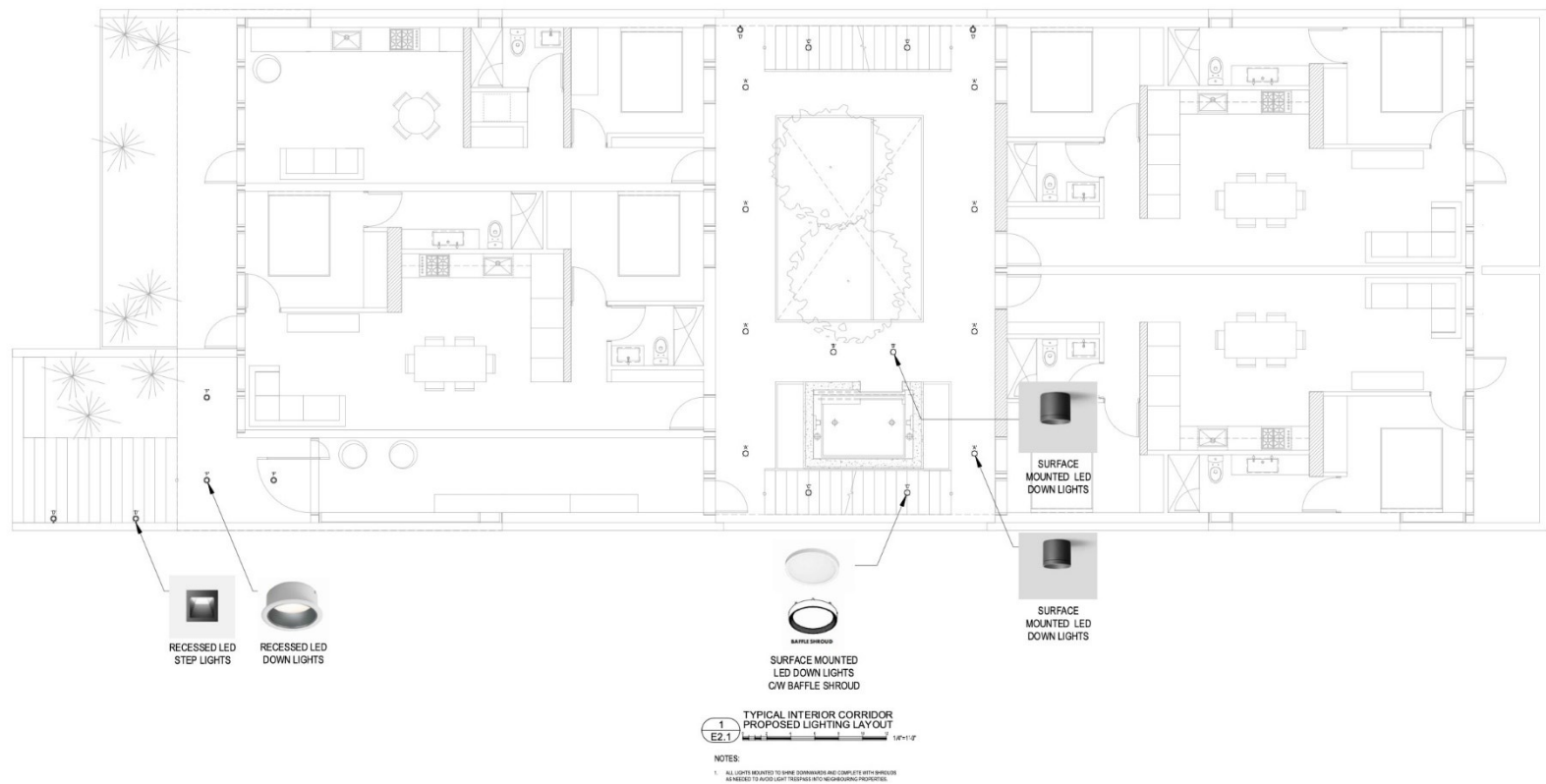


931 McClure St
VICTORIA BC

E2.0

TITLE1





CONSULTANT:

AES
Designing A Better Tomorrow
200-1111 Broadway East
Vancouver BC V6L 1K2
TEL: 604 683 2226
F: 604 683 2221
info@aes.ca
www.aes.ca

D'Arcy Jones Architects Inc.

200-1111 Broadway East
Vancouver BC V6L 1K2
TEL: 604 683 2226
F: 604 683 2221
info@aes.ca
www.aes.ca
Copyright reserved. All parts of this drawing and the
information contained herein are the property of the
author of the drawing. Any reuse or reproduction in this
drawing and its information is prohibited without the
written consent of the author.

REVISIONS:
A ISSUED FOR

01-20-2021
SCALE:
AS NOTED
DATE:
JANUARY 2021
DRAWN:
CHECKED:
DATE:
KEYWORD:
KEY:
JOB NUMBER:
1-20-2021

931 McClure St
VICTORIA BC

E2.1

TITLE1