

### LEGEND

Found	Placed	
		Lead Plug
		Control Monument

NTS Denotes Not to Scale  
 (553) Denotes typical coordinate point  
 All distances are in metres and decimals thereof

This plan lies within Integrated Survey Area No. 17, Victoria,  
NAD83 (CSRS) 3.0.0.BC.1.CRD

Grid bearings are derived from observations between geodetic control monuments 4-7 and 9-124 and are referred to the central meridian of UTM Zone 10.

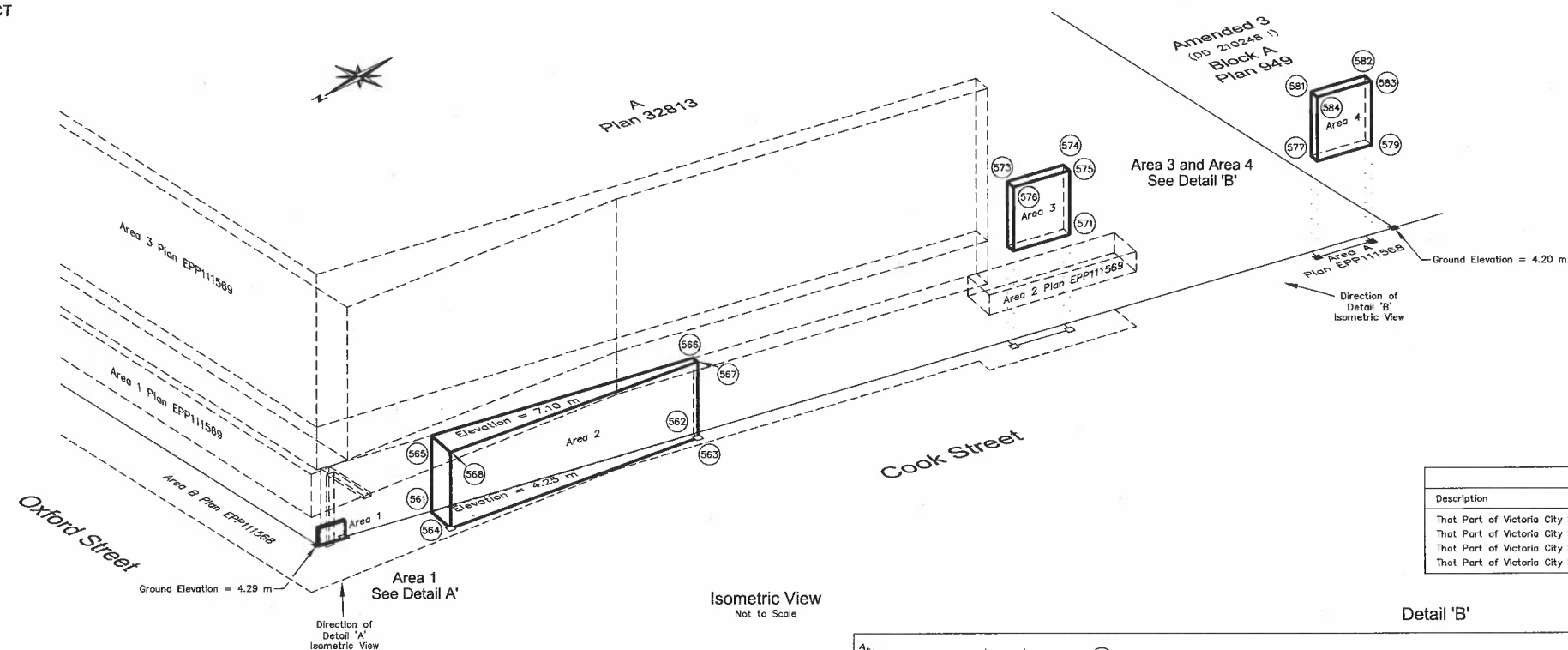
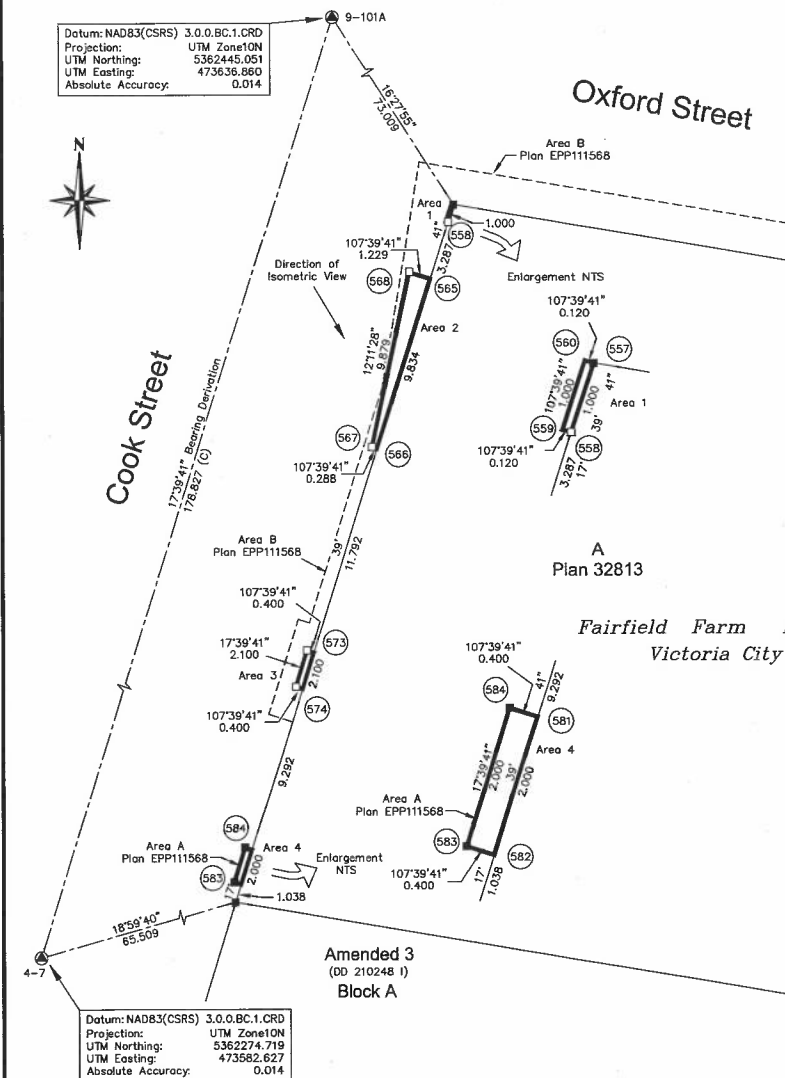
This plan shows horizontal ground level distances, unless otherwise specified. To compute grid distances, multiply ground level distances by the average combined factor of 0.9996107. The average combined factor has been determined from Plan EPP11156B.

All elevations shown are in metres and are related to the geodetic datum CVD28BC Benchmark: Geodetic Control Monument 9-101A located in sidewalk on east side of  
of Cook Street at Sutton St. Elevation = 4.367

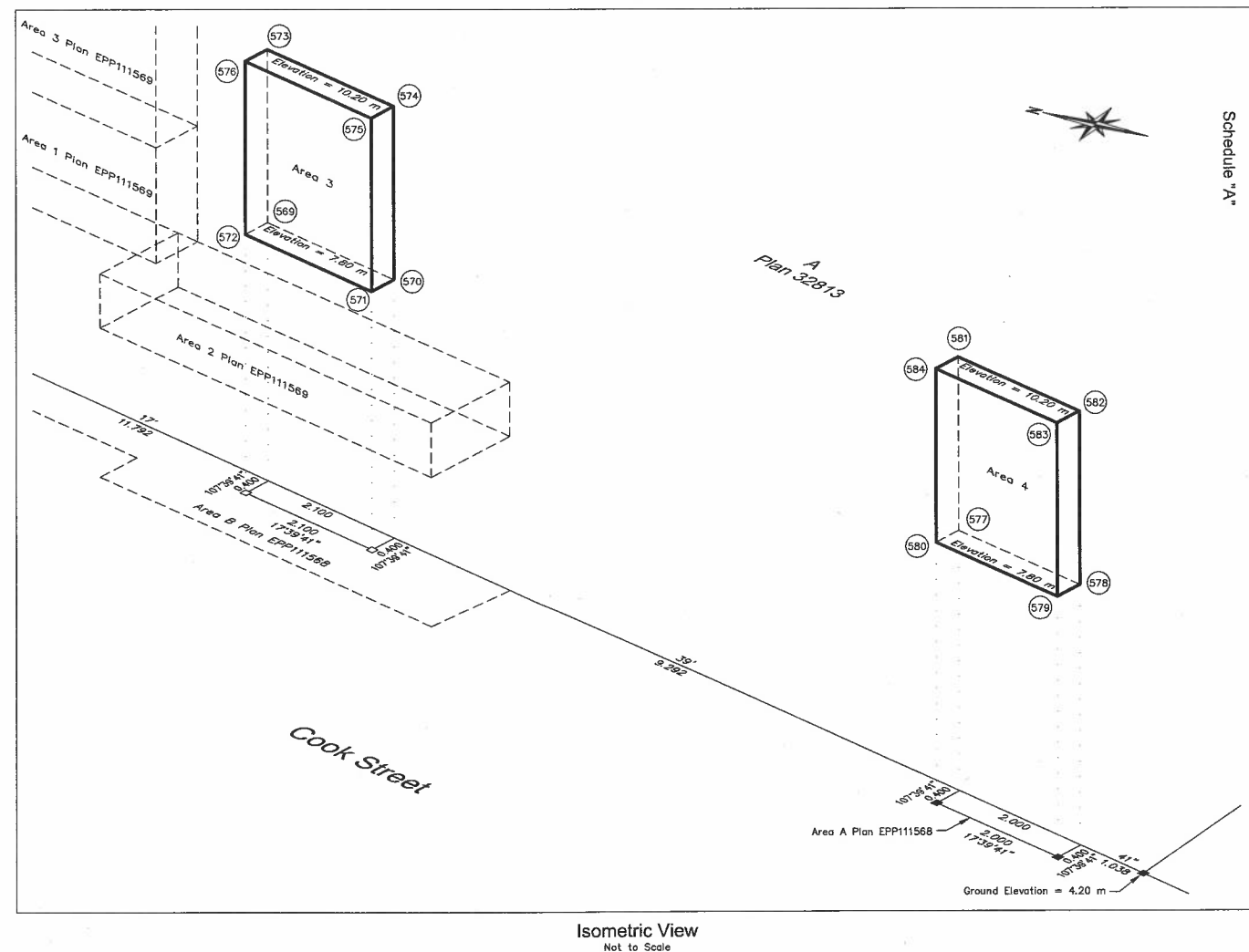
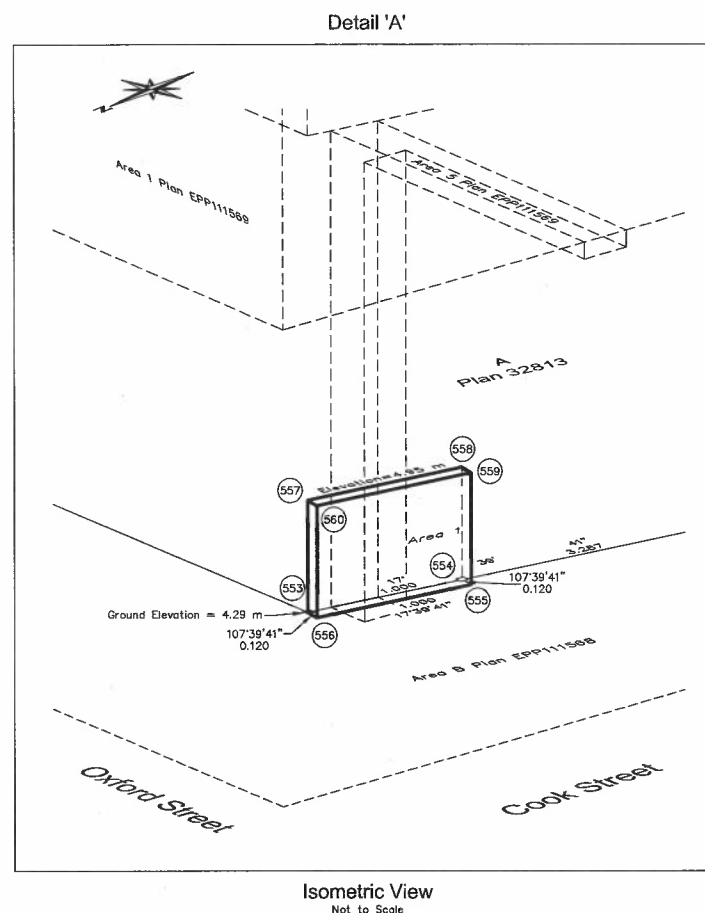
Point	Northing	Easting	Elevation	Point	Northing	Easting	Elevation
553	5364462.915	473800.578	4.29	569	5364438.223	473792.717	7.80
554	5364461.562	473800.275	4.29	570	5364438.222	473792.717	7.80
555	5364461.599	473800.151	4.29	571	5364438.223	473791.698	7.80
556	5364462.951	473800.484	4.29	572	5364438.245	473792.732	7.80
557	5364462.915	473800.578	4.95	573	5364438.223	473792.717	7.80
558	5364461.562	473800.275	4.95	574	5364438.222	473792.080	7.80
559	5364461.599	473800.151	4.95	575	5364438.223	473791.698	7.80
560	5364462.951	473800.484	4.95	576	5364438.245	473792.732	10.20
561	5364458.830	473799.278	4.25	577	5364427.468	473789.261	7.80
562	5364449.459	473796.294	4.25	578	5364425.462	473788.658	7.80
563	5364449.457	473796.020	4.25	579	5364425.544	473787.733	7.80
564	5364459.203	473798.106	4.25	580	5364427.469	473788.880	7.80
565	5364458.830	473799.278	7.10	581	5364427.468	473789.261	7.80
566	5364449.459	473796.294	7.10	582	5364425.462	473788.658	7.80
567	5364449.457	473796.020	7.10	583	5364425.544	473787.733	7.80
568	5364459.203	473798.106	7.10	584	5364427.469	473788.880	10.20

Note: This table shows local, ground level coordinates, intended to show the relative relationship between the volumetric areas and parcel corners. These coordinates are not for georeferencing purposes.

Datum: NAD83(CSRS) 3.0.0.BC.1.CRD  
Projection: UTM Zone10N  
UTM Northing: 5362445.051  
UTM Easting: 473636.860  
Absolute Accuracy: 0.014



BOOK OF REFERENCE				
Description		Points	Area	Volume
That Part of Victoria City Shown as Area B on Plan EPP111568	Area 1	553 – 560	0.10 m <sup>2</sup>	0.07920 m <sup>3</sup>
That Part of Victoria City Shown as Area B on Plan EPP111568	Area 2	561 – 568	7.5 m <sup>2</sup>	21.26 m <sup>3</sup>
That Part of Victoria City Shown as Area B on Plan EPP111568	Area 3	569 – 576	0.84 m <sup>2</sup>	2.016 m <sup>3</sup>
That Part of Victoria City Shown as Area A on Plan EPP111568	Area 4	577 – 584	0.80 m <sup>2</sup>	1.920 m <sup>3</sup>



J.E. ANDERSON & ASSOCIATES  
B.C. Land Surveyors - Consulting Engineers  
Victoria-Nanaimo-Parksville-Campbell River, B.C.  
File: 33071  
Y:\\_Projects\33071\08\02\Microsurvey\33071 LEGAL.dwg (REF PLAN VOL 2)

This plan lies within the Capital Regional District

The field survey represented by this plan was completed on the 26th day of May, 2021.

Ryan P. Hourston, BCLS 887