

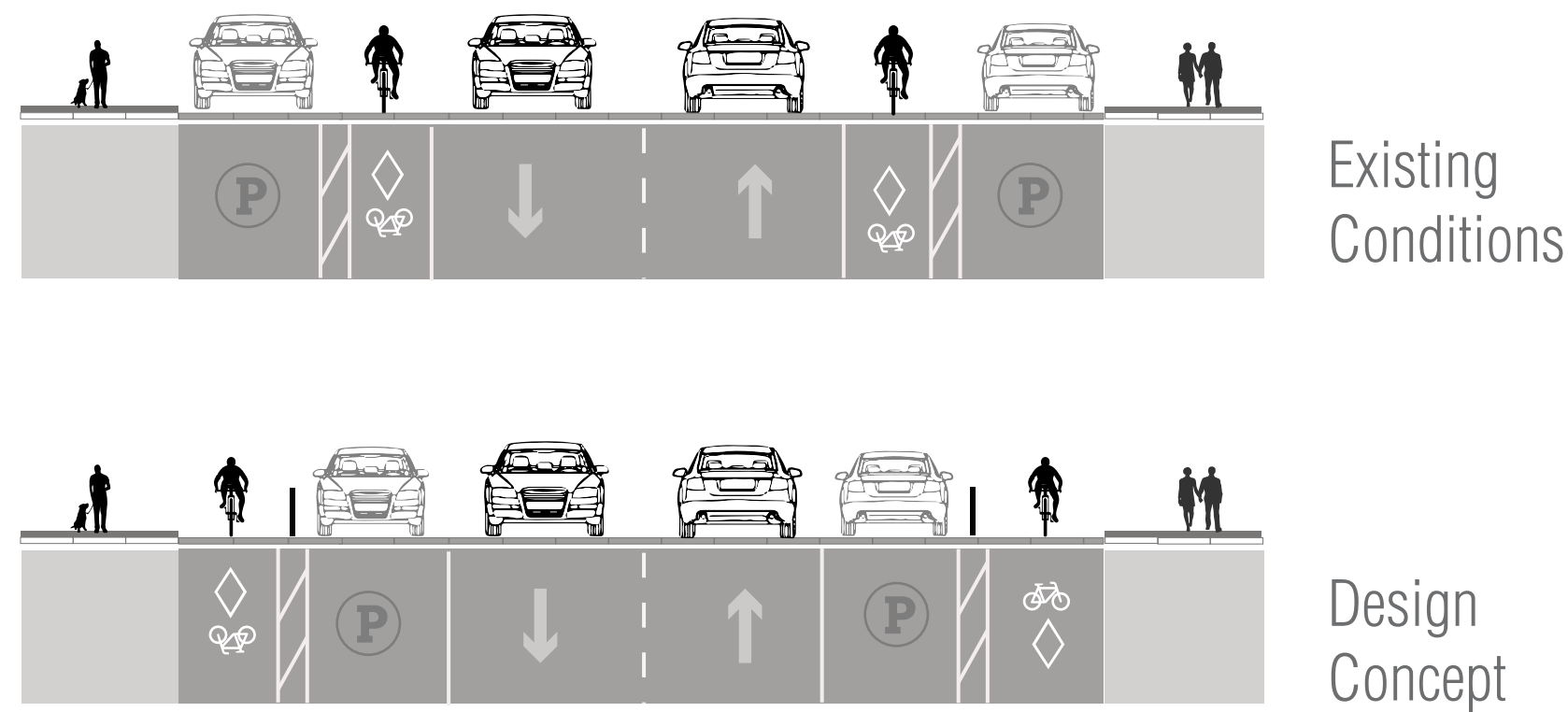
JAMES BAY AAA DESIGN REVISIONS

GOVERNMENT STREET | Humboldt Street to Toronto Street

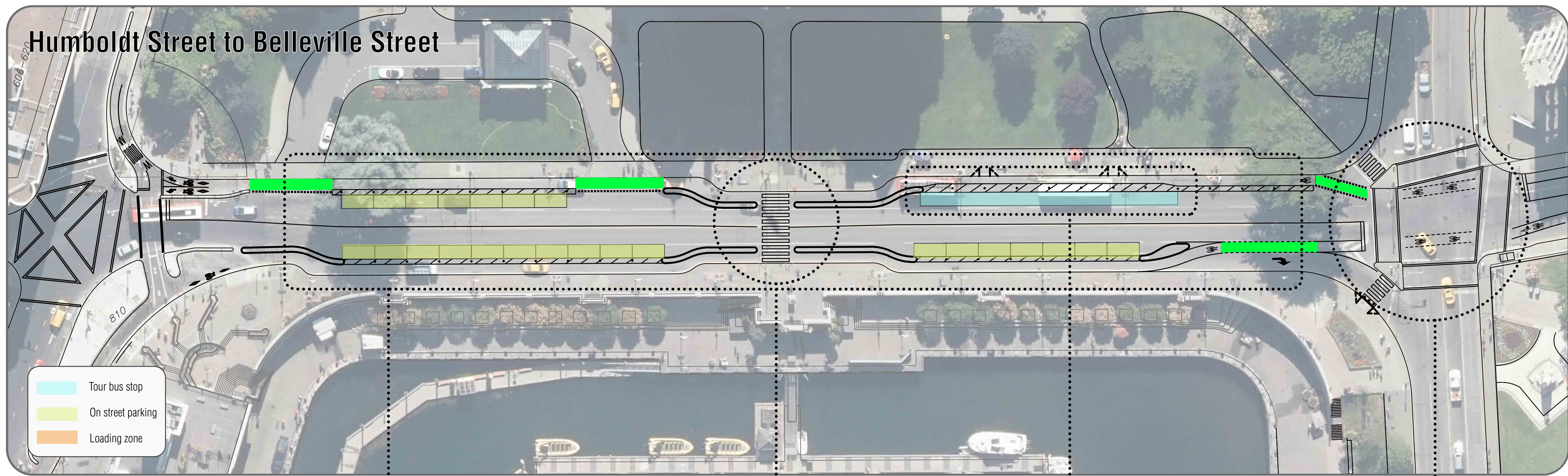
Corridor Overview & AAA Network Connections



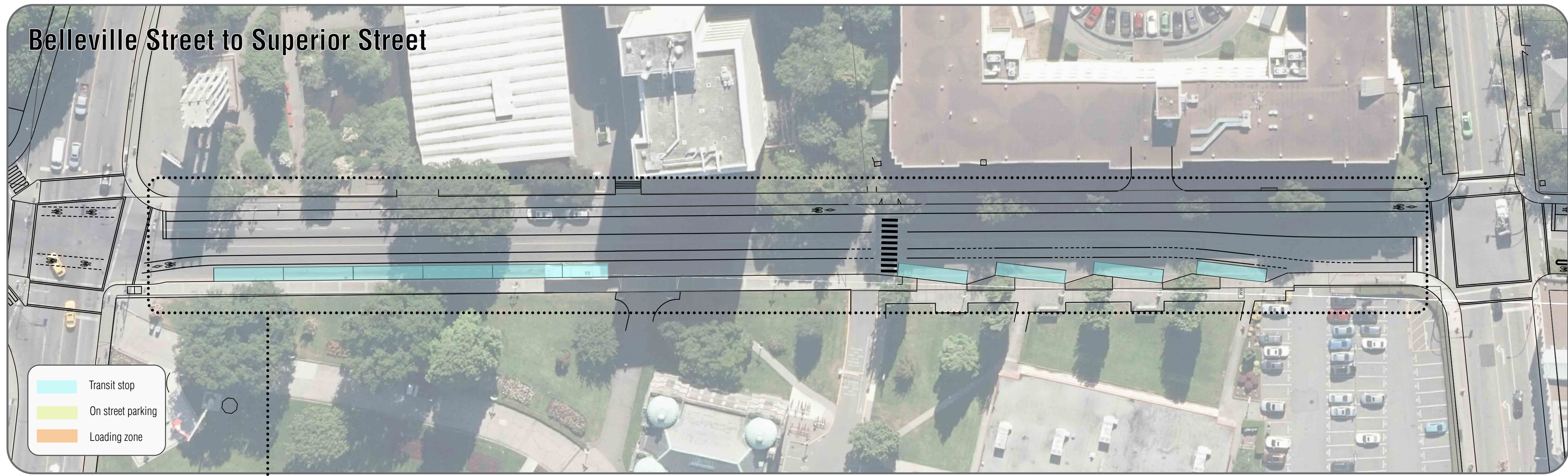
Revised Concept: One-way protected bike lanes in select areas



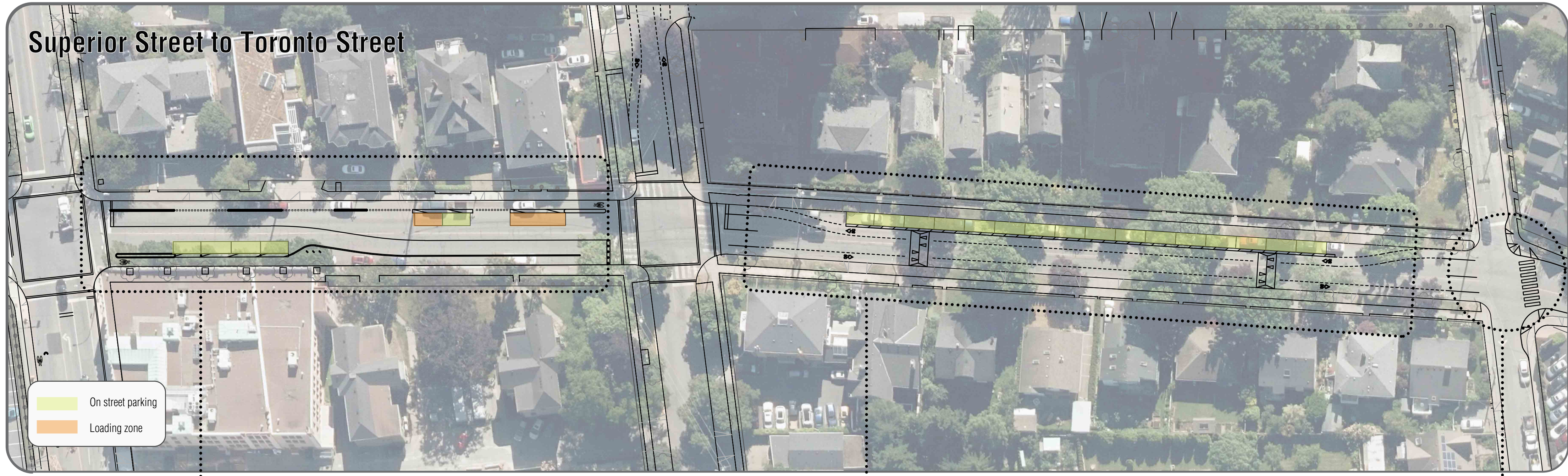
Corridor Segments and Design Considerations



- Add one-way protected bike lanes buffered by on-street parking
- Upgrade pedestrian crossing with flashing beacons
- Add new let downs and larger passenger loading area at tour bus pick up / drop off zone
- Interim improvements to explore alternate signal phases and pedestrian scramble opportunities



Interim approach for one-way painted bike lanes - phased infrastructure improvements in coordination with Legislature frontage improvements and RBCM building retrofits



- Add protected bike lanes buffered by on-street parking and retain loading zone on west side of street
- Use advisory bike lanes to transition from protected bike lanes to neighbourhood bikeway - retain parking on west side of street
- Add pedestrian crossing, curb bulges and new let downs