

NO. 21-022

A BYLAW OF THE CITY OF VICTORIA

The purposes of this Bylaw are to amend the Zoning Regulation Bylaw by creating the M2-SC Zone, Songhees (Cannabis) District, and to rezone land known as 730-736 Tyee Road & 131-137 Skinner Street from the M2-S Zone, Songhees Light Industrial District to the M2-SC Zone, Songhees (Cannabis) District.

The Council of The Corporation of the City of Victoria enacts the following provisions:

- 1 This Bylaw may be cited as the “ZONING REGULATION BYLAW, AMENDMENT BYLAW (NO. 1247)”.
- 2 Bylaw No. 80-159, the Zoning Regulation Bylaw, is amended in the Table of Contents of Schedule “B” under the caption PART 7 – INDUSTRIAL AND SERVICE ZONES by adding the following words:

“7.63 M2-SC, Songhees (Cannabis) District”

- 3 The Zoning Regulation Bylaw is also amended by adding to Schedule B after Part 7.62 the provisions contained in Schedule 1 of this Bylaw.
- 4 The land known as 730-736 Tyee Road & 131-137 Skinner Street, legally described as PID: 003-120-589, Lot 181, District Lot 119, Esquimalt District, Plan 13755, and shown hatched on the attached map, is removed from the M2-S Zone, Songhees Light Industrial District, and placed in the M2-SC Zone, Songhees (Cannabis) District.

READ A FIRST TIME the 28 th day of January 2021

READ A SECOND TIME the 28 th day of January 2021

Public hearing held on the day of 2021

READ A THIRD TIME the day of 2021

ADOPTED on the day of 2021

CITY CLERK

MAYOR



PART 7.63 – M2-SC ZONE, SONGHEES (CANNABIS) DISTRICT

7.63.1 Permitted Uses in this Zone

The following uses are the only uses permitted in this Zone:

- a. Uses permitted in the M2-S Zone, Songhees Light Industrial District; and
- b. Storefront cannabis retailer provided that only one storefront cannabis retailer is permitted to operate on a single lot.

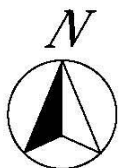
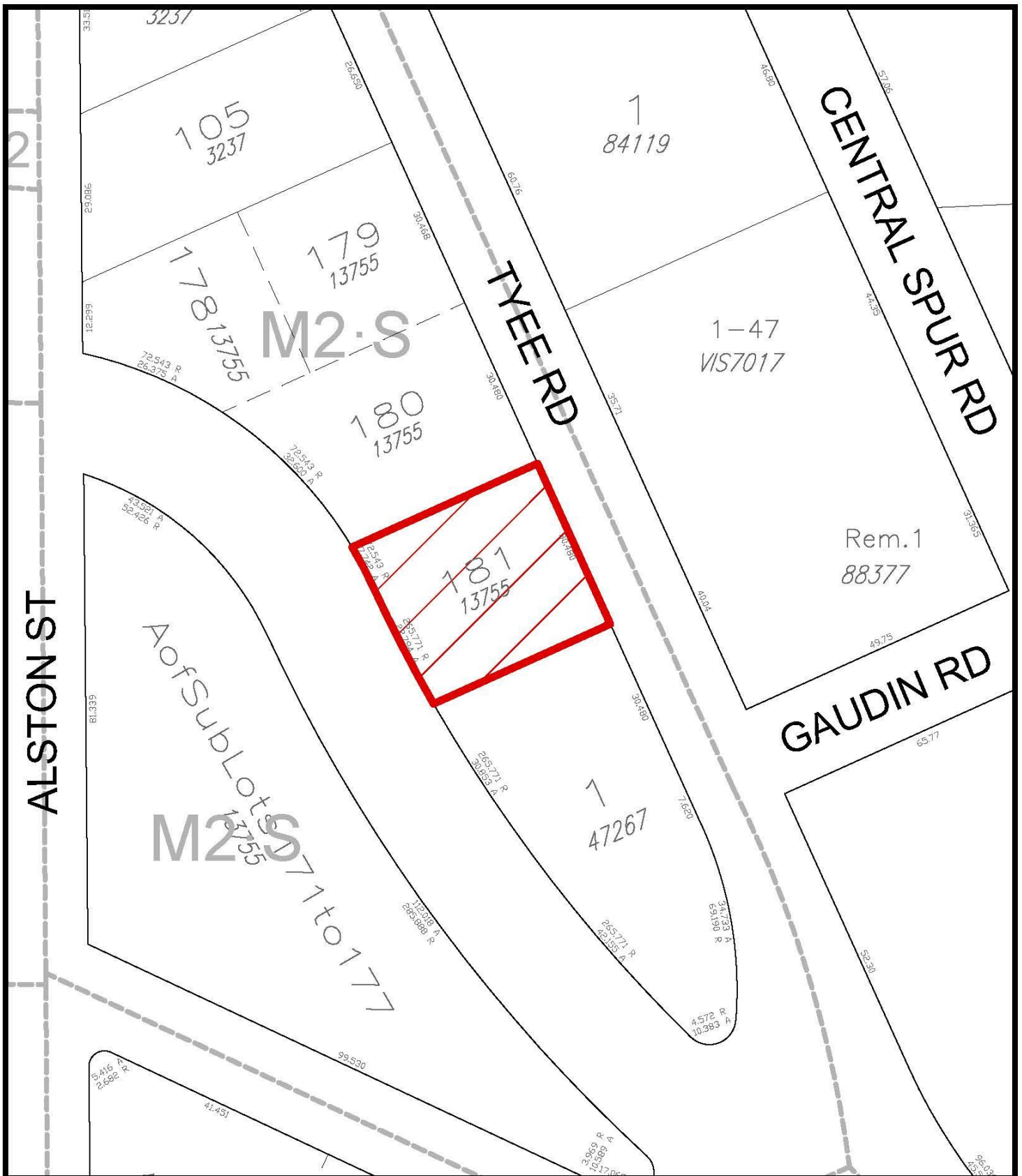
7.63.2 Size & Location of Uses

A storefront cannabis retailer must:

- a. be located on the ground floor; and
- b. not occupy more than 122m².

7.63.3 General Regulations

- a. Subject to the regulations in this Part 7.63, the regulations in the M2-S Zone, Songhees Light Industrial District apply in this Zone.



732 Tyee Road
Rezoning No.00747

