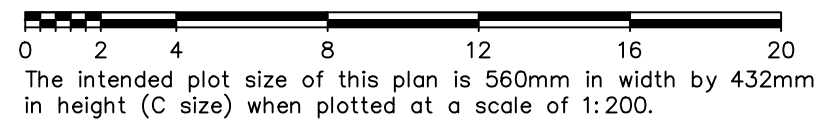


EXPLANATORY PLAN OF PART OF LOT 5, SECTION 68,  
VICTORIA DISTRICT, PLAN 290, EXCEPT THAT PART IN PLAN 1834  
FOR EASEMENT PURPOSES PURSUANT TO SECTION 99(1)(E), LAND TITLE ACT

PLAN EPP112409

BCGS 92B.044

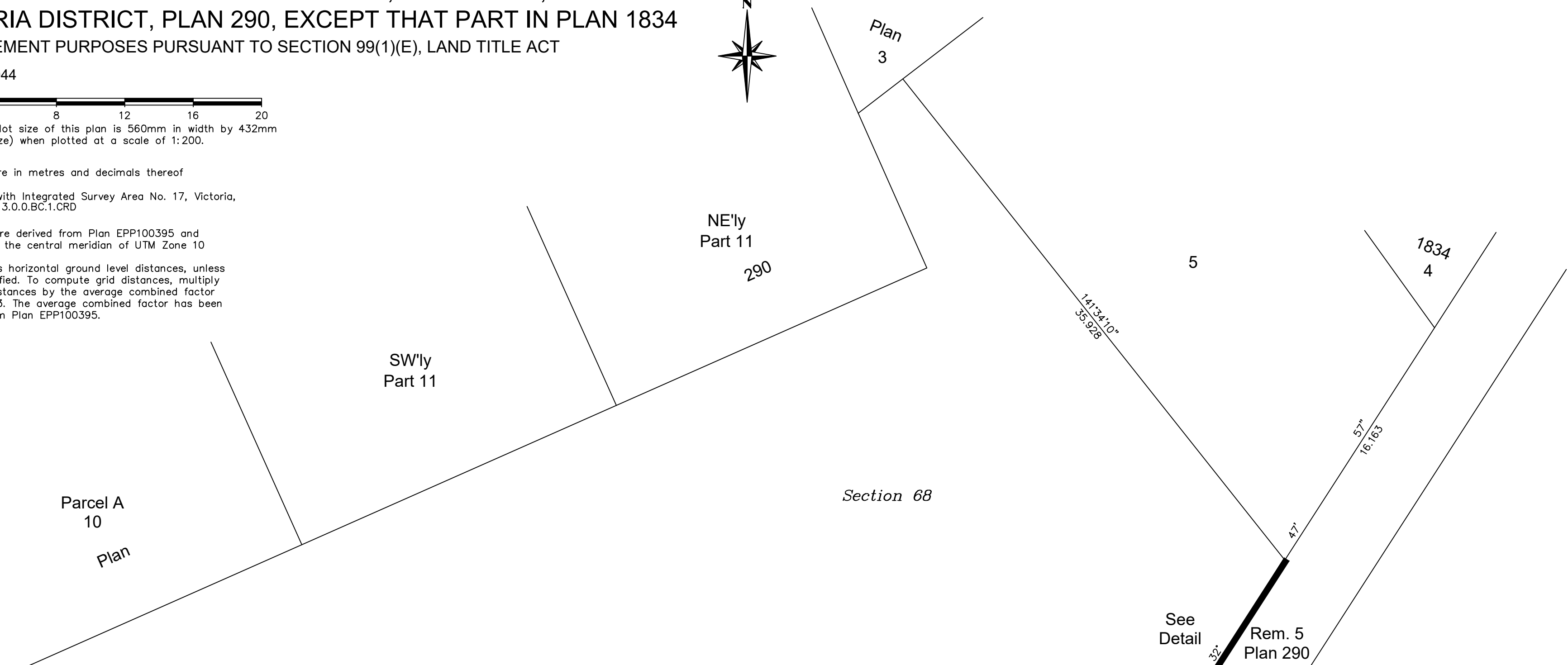


All distances are in metres and decimals thereof

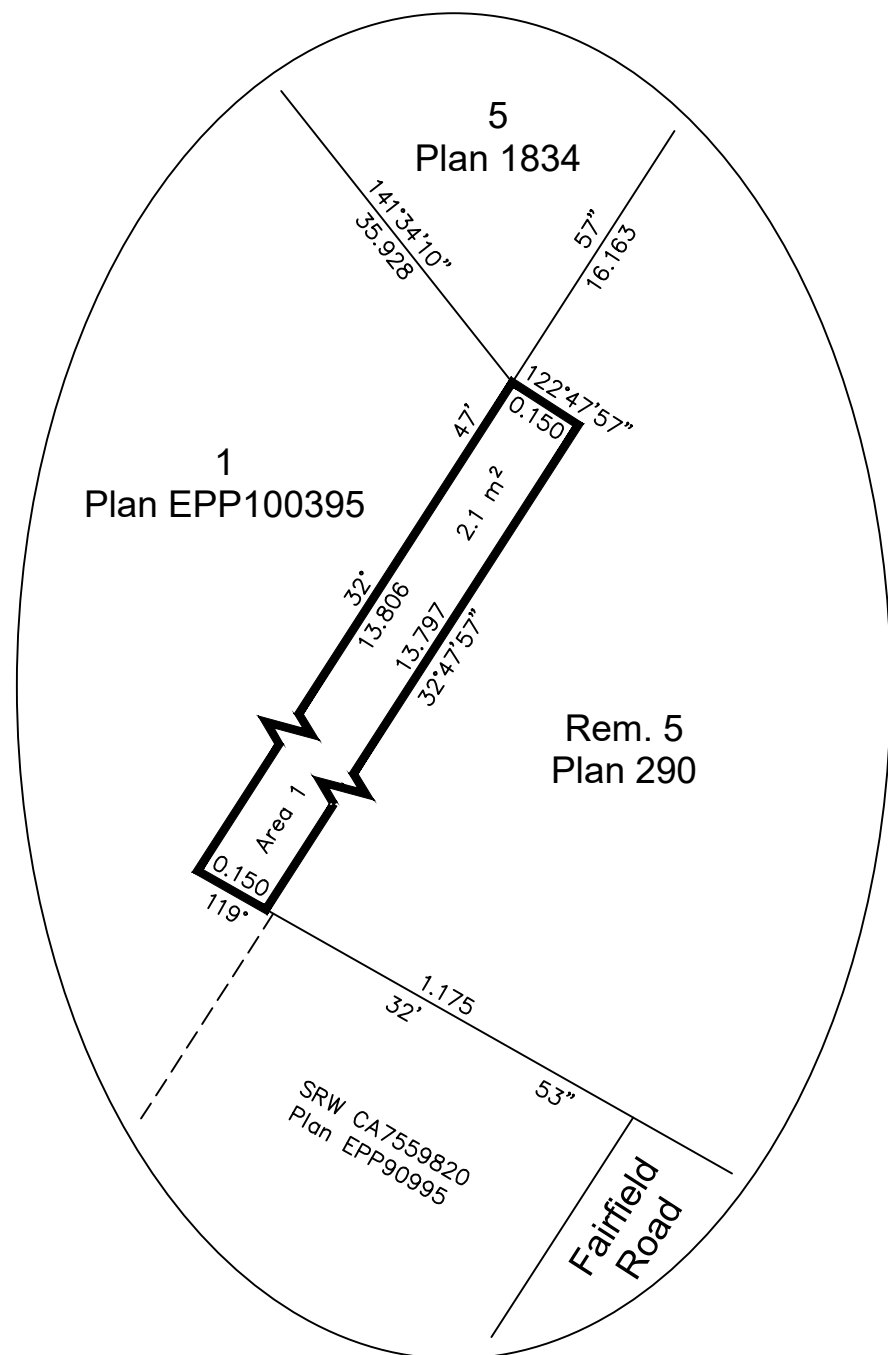
This plan lies with Integrated Survey Area No. 17, Victoria, NADB3 (CSRS) 3.0.0.BC.1.CRD

Grid bearings are derived from Plan EPP100395 and are referred to the central meridian of UTM Zone 10

This plan shows horizontal ground level distances, unless otherwise specified. To compute grid distances, multiply ground level distances by the average combined factor of 0.999608233. The average combined factor has been determined from Plan EPP100395.



1  
Plan EPP100395



Detail  
Not To Scale

J.E. ANDERSON & ASSOCIATES  
B.C. Land Surveyors - Consulting Engineers  
Victoria-Nanaimo-Parksville-Campbell River, B.C.  
File: 30503  
V: \\_Projects\30503\08\02\Microsurvey\30503.dwg (EXPLAN)

This plan lies within the Capital Regional District  
This plan is based on the following Land Title and Survey Authority of BC records:  
Plan EPP100395  
Ryan P. Hourston, BCLS 887  
9th day of June, 2021.