

A BYLAW OF THE CITY OF VICTORIA

The purpose of this Bylaw is to close to traffic certain portions of two public highways known as Vining Street and North Park Street and remove the dedication of such highways.

In accordance with sections 40(3), 40(4) and 94 of the *Community Charter*, the Council of the Corporation of the City of Victoria may, by bylaw, close all or part of a highway that is vested in the municipality to some or all types of traffic and may remove the dedication of a highway that has been or is being closed.

Contents

- 1. Title
- 2. Highway closures
- 3. Removal of highway dedications
- 4. Effective date

Under its statutory powers, including sections 40(1)(a) and 40(2) of the *Community Charter*, the Council of the Corporation of the City of Victoria, enacts the following provisions:

Title

- 1. This Bylaw may be cited as the "Vining Street and North Park Street Road Closure and Dedication Removal Bylaw, 2021".

Highway Closures

- 2. The following portions of public highway marked "Closed Road" on the Reference Plans EPP88785 and EPP114517 prepared by Glen A. Quarmby BCLS, dated June 18, 2020, a reduced copy of which is attached hereto as Schedule "A", are closed to traffic:
 - a) the 278.1 square metre portion of public highway known as Vining Street;
 - b) the 556.0 square metre portion of public highway known as North Park Street; and
 - c) the 133.6 square metre portion of public highway know as North Park Street.

Dedication Removal

- 3. The highway dedication of those parts of Vining Street and North Park Street described in section 2 and shown in Schedule A is hereby cancelled and removed.

Effective Date

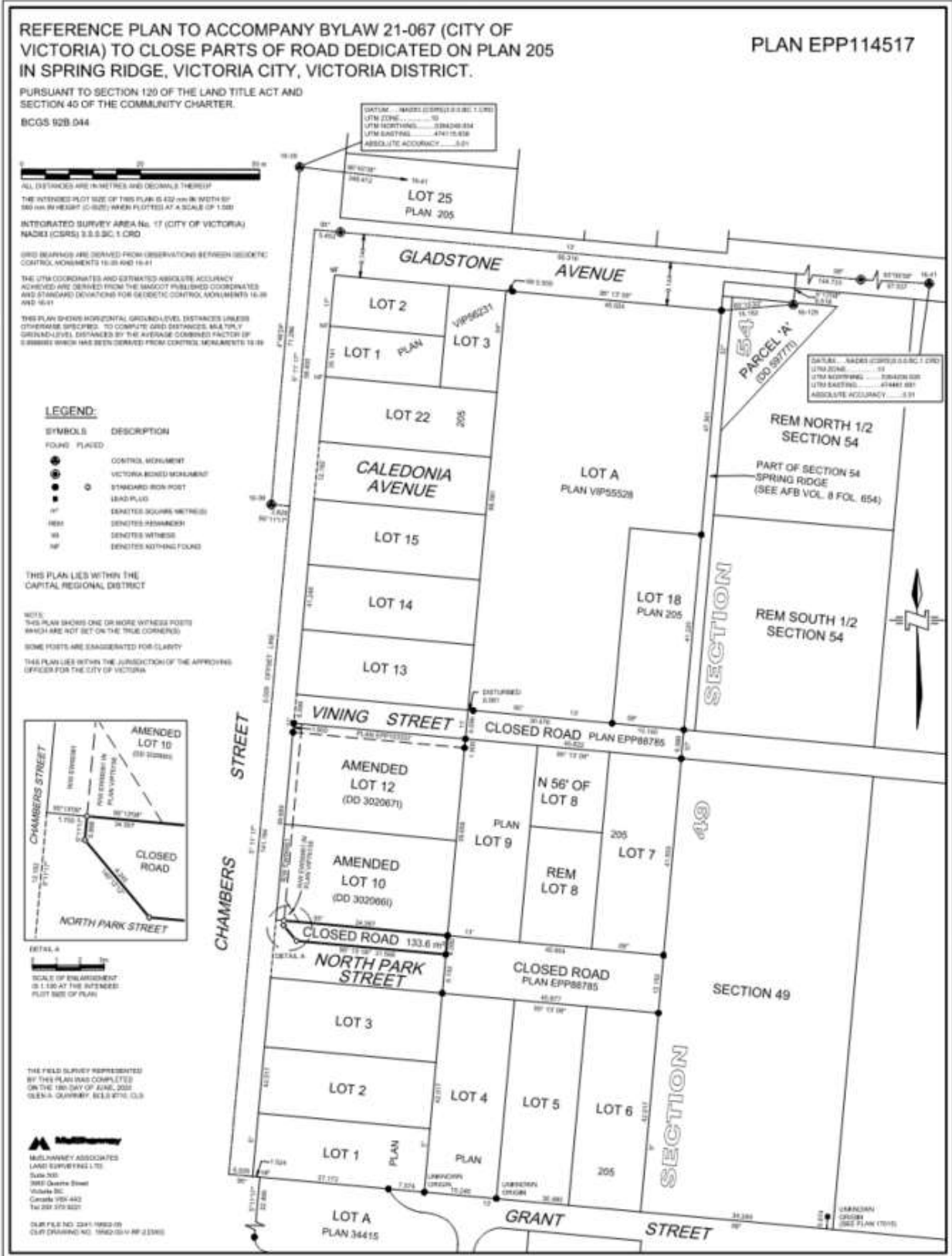
- 4. This Bylaw comes into force on adoption.

READ A FIRST TIME the	day of	2021
READ A SECOND TIME the	day of	2021
READ A THIRD TIME the	day of	2021
ADOPTED the	day of	2021

CITY CLERK

MAYOR

Schedule A



REFERENCE PLAN TO ACCOMPANY BYLAW 21-067 (CITY OF VICTORIA) TO CLOSE PARTS OF ROAD DEDICATED ON PLAN 205 IN SPRING RIDGE, VICTORIA CITY, VICTORIA DISTRICT.

PLAN EPP88785

PURSUANT TO SECTION 120 OF THE LAND TITLE ACT AND SECTION 40 OF THE COMMUNITY CHARTER.

BCGS 928 044

ALL DISTANCES ARE IN METRES AND DECIMALS THEREOF

THE INTENDED PLOT SIZE OF THIS PLAN IS 432 mm IN WIDTH BY 300 mm IN HEIGHT (3:525) WHEN PLOTTED AT A SCALE OF 1:500

INTEGRATED SURVEY AREA No. 17 (CITY OF VICTORIA) NAD83 (CGRS) 3.5 S.B.C. 1 CRD

GRID BEARINGS ARE DERIVED FROM OBSERVATIONS BETWEEN GEODETIC CONTROL MONUMENTS 16-39 AND 16-41

THE UTM COORDINATES AND ESTIMATED ABSOLUTE ACCURACY ACHIEVED ARE DERIVED FROM THE MAGNET PUBLISHED COORDINATES AND STANDARD DEVIATIONS FOR GEODETIC CONTROL MONUMENTS 16-39 AND 16-41

THIS PLAN SHOWS HORIZONTAL GROUND LEVEL DISTANCES UNLESS OTHERWISE SPECIFIED. TO COMPLETE GRID DISTANCES, MULTIPLY GROUND LEVEL DISTANCES BY THE AVERAGE COMBINED FACTOR OF 0.99999 WHICH HAS BEEN DERIVED FROM CONTROL MONUMENTS 16-39 AND 16-41

LEGEND:

SYMBOLS DESCRIPTION

FOUND PLACED

- CONTROL MONUMENT
- VICTORIA BOUND MONUMENT
- STANDARD IRON POST
- LEAD PLUG
- DENOTES SQUARE METRES
- DENOTES REMAINDER
- DENOTES WIDTHS
- DENOTES NOTHING FOUND

THIS PLAN LIES WITHIN THE CAPITAL REGIONAL DISTRICT

NOTE: THIS PLAN SHOWS ONE OR MORE WITNESS POSTS WHICH ARE NOT SET ON THE TRUE CORNERS

SOME POSTS ARE ENLARGED FOR CLARITY

THIS PLAN LIES WITHIN THE JURISDICTION OF THE APPROVING OFFICER FOR THE CITY OF VICTORIA

THE FIELD SURVEY REPRESENTED BY THIS PLAN WAS COMPLETED ON THE 18th DAY OF JUNE, 2023 (SUN & QUARRY) 5:51:07.538

MILLARNEY ASSOCIATES
LAND SURVEYING LTD.
Suite 302
3950 Quatre Street
Victoria BC
Canada V8K 4A2
Tel: 250-375-5221

OUR FILE NO. 2001-1092-08
OUR DRAWING NO. 1990-0314-001-P-000

