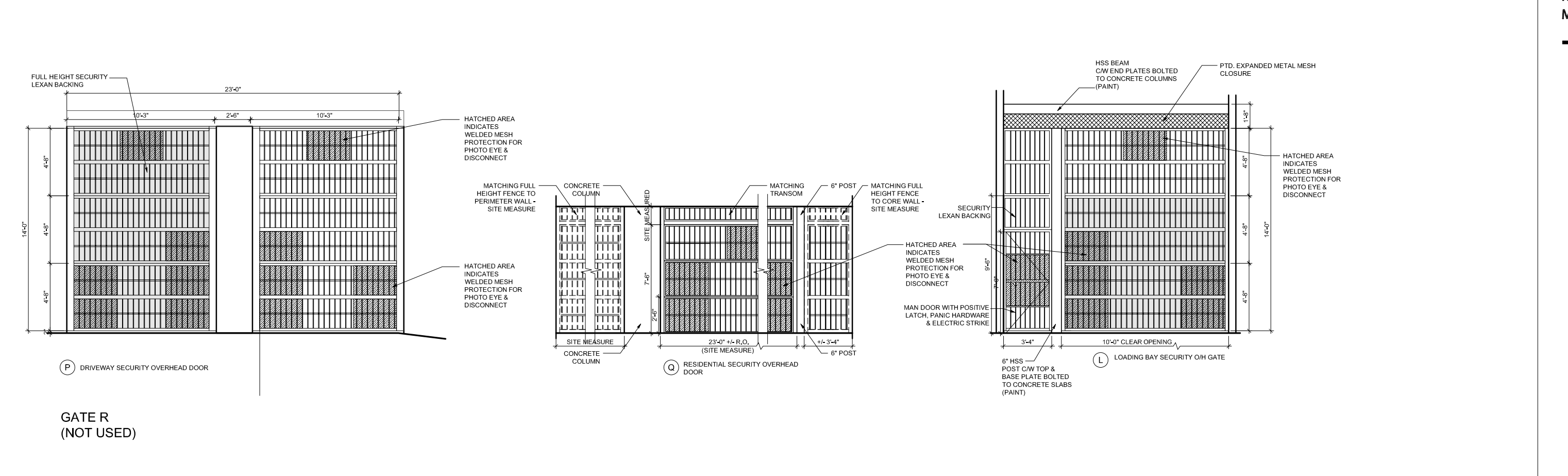
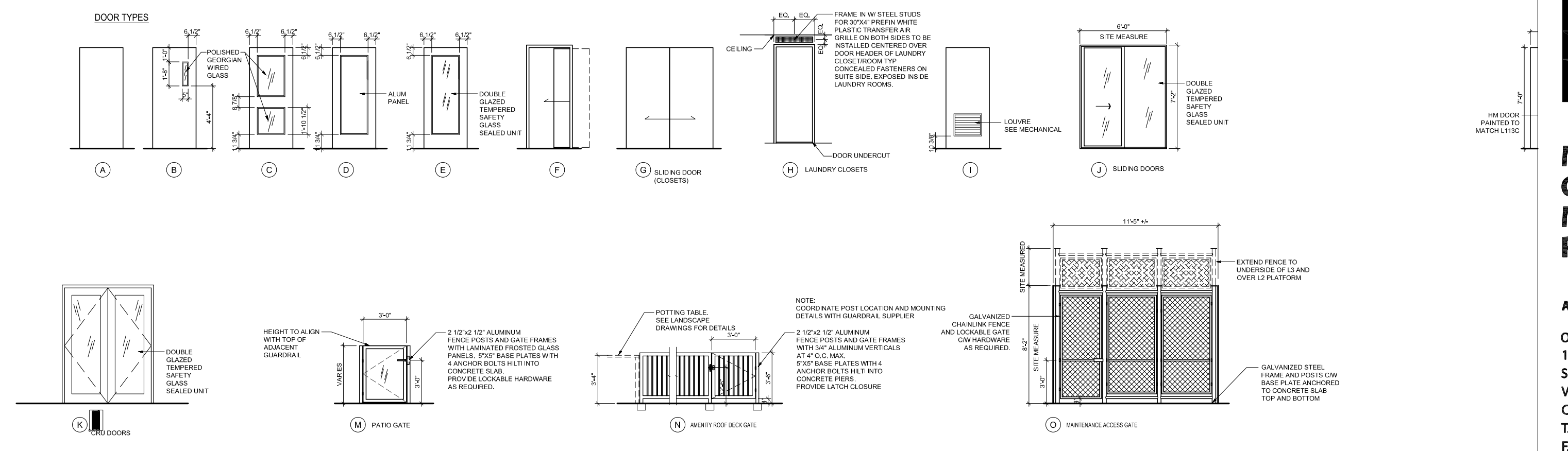


RESIDENTIAL TOWER - 848 YATES STREET, VICTORIA, BC

PROJECT NO. 2016-216101

Table with columns: ROOM NO., ROOM NAME, ROOM NUMBER, SIZE, LABEL, DOOR, FRAME, DET., GLASS, CORE, and REMARKS. It lists various rooms including bedrooms, bathrooms, living areas, and utility rooms, each with specific door and frame details.

Legend table defining abbreviations for materials and door types: DOOR MATERIAL, FRAME, GLASS, CORE, FINISH, and LOCKING DEVICE.



Original Submission Received Date: July 21, 2021

16 JUNE 2021 Issued for Record Drawings Revisions YYYY-MM-DD

Seal 848 Yates St Victoria, BC

Door Types and Door Schedule

Drawing Scale N.T.S. Project 216017

CROSS OVER FLOORS : L1 - L6 - L11 - L16 - L20

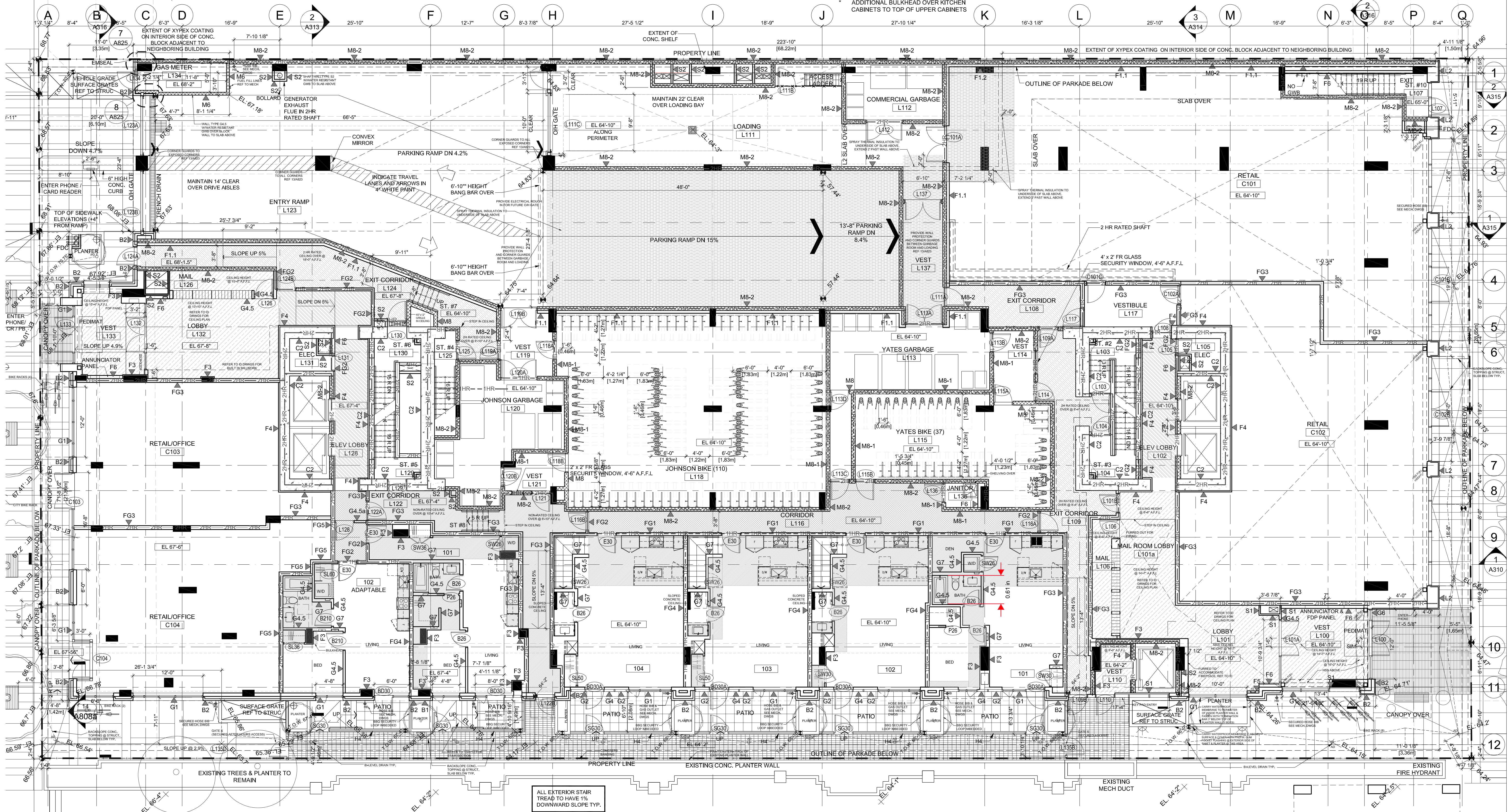
GRADE:
NORTH [(20.19m + 20.89m)/2] X 36.54m = 750.53
EAST [(20.89m + 19.78m)/2] X 74.46m = 1,514.14
SOUTH [(19.78m + 19.59m)/2] X 36.54m = 719.29
WEST [(19.59m + 20.19m)/2] X 74.46m = 1,481.01

GRADE CALCULATION:
4,464.97 / 222m = 20.11m

NOTE: CONTRACTOR TO CHECK ALL CEILING DROPS WITH DUCTING, LIGHTING AND SPRINKLERS BEFORE FRAMING. CONTRACTOR TO COORDINATE LOCATION OF CEILING ACCESS PANELS - FINISHED TO MATCH CEILINGS

- GENERAL NOTE:
- REFER TO INTERIOR DESIGN DRAWINGS FOR FINISHES & REFLECTED CEILING PLAN AT ELEVATOR LOBBY & PUBLIC CORRIDORS
 - REFER TO INTERIOR DRAWINGS FOR BATHROOM AND KITCHEN LAYOUTS, APPLIANCES AND FIXTURES.
 - GLASS DOORS TO BE TEMPERED GLASS. SIDELIGHTS ADJACENT TO GLASS DOORS ON GROUND LEVEL TO BE TEMPERED GLASS.
 - FLUSH METAL SPANDREL BELOW WINDOWS ON ALL BALCONIES.
 - LEVEL SLAB AT ALL DOORWAYS.
 - SLOPE AND SEAL AROUND PARKING LEVEL COLUMNS AND WALLS. REF DETAIL 7/820.
 - PROVIDE PLYWOOD BACKING BEHIND ELECTRICAL AND COMM PANELS, 8" HIGH FOR WIDTH OF PANELS.
 - PREPARE SITE MOCK UPS OF ALL GUARDS FOR REVIEW BY BUILDING INSPECTOR. CONTRACTOR AND SUB TRADE TO REVIEW ALIGNMENT OF ALL PLUMBING, DRAIN, SANITARY AND SPRINKLER LINES WITH CONSULTANT PRIOR TO INSTALLATION.
 - CONTRACTOR AND SUB TRADE TO REVIEW ALIGNMENT OF HVAC AND EXHAUST DUCTING WITH CONSULTANT PRIOR TO INSTALLATION.
 - REFER TO MECH AND ELEC DRAWINGS FOR COORDINATION OF FIXTURE LOCATIONS.

- CEILING HEIGHT A.F.F.L.
- ELEV LOBBY YATES TOWER: 8'-6"
 - LOBBY JOHNSON TOWER: 10'-4"
 - CORRIDOR YATES TOWER: 8'-10"
 - JOHNSON TOWER: 10'-4"
 - SUITES YATES TOWER: 8'-10"
 - JOHNSON TOWER: 10'-4"
 - OTHER YATES TOWER: AS INDICATED
 - JOHNSON TOWER: AS INDICATED
 - 2 HR RATED CEILING YATES TOWER: AS INDICATED
 - JOHNSON TOWER: AS INDICATED
 - ADDITIONAL BULKHEAD OVER KITCHEN CABINETS TO TOP OF UPPER CABINETS



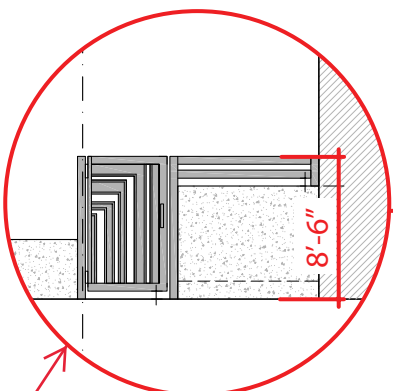
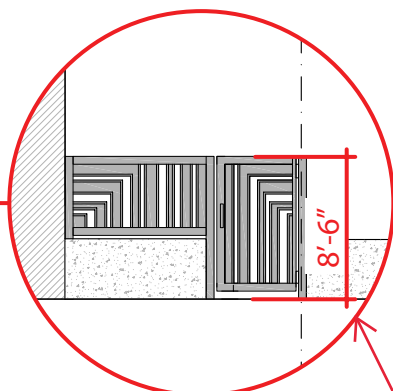
JOHNSON TOWER

YATES TOWER

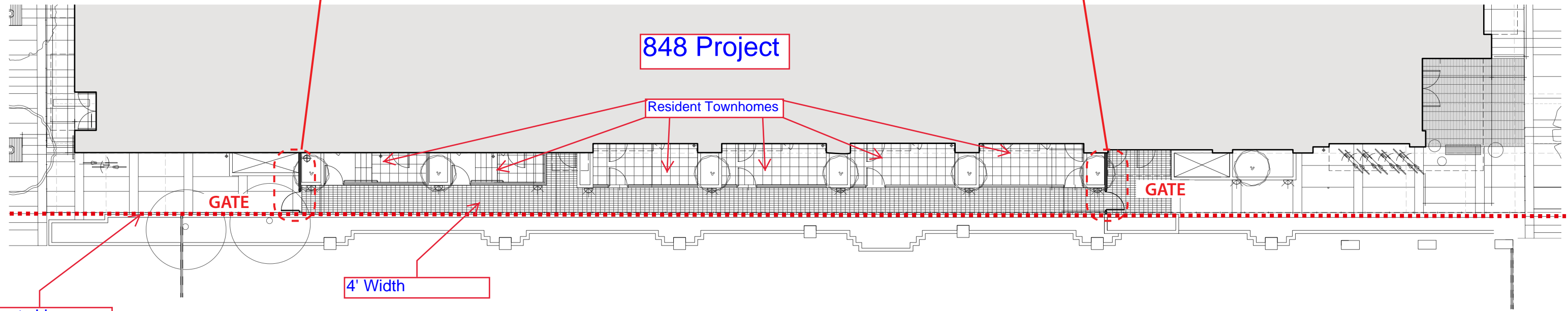
- All work constructed on 848 lands in accordance with the approved DP
- Requested to have gates remain shut until City obtains SRW on neighboring 836 Yates property.

Johnson St

Yates St



Constructed As per Approved D.P Dated May 11/2017



848 Project

Resident Townhomes

GATE

GATE

4' Width

Property Line

836 Yates Property