

NO. 22-004

A BYLAW OF THE CITY OF VICTORIA

The purpose of this Bylaw is to amend the Official Community Plan to change the urban placedesignation for 496 Cecelia Road and a portion of 498 Cecelia Road from Public Facilities, Institutions, Parks and Open Space to Large Urban Village.

Under its statutory powers, including Division 4 of the *Local Government Act*, the Council of the Corporation of the City of Victoria, in an open meeting assembled, enacts the following provisions:

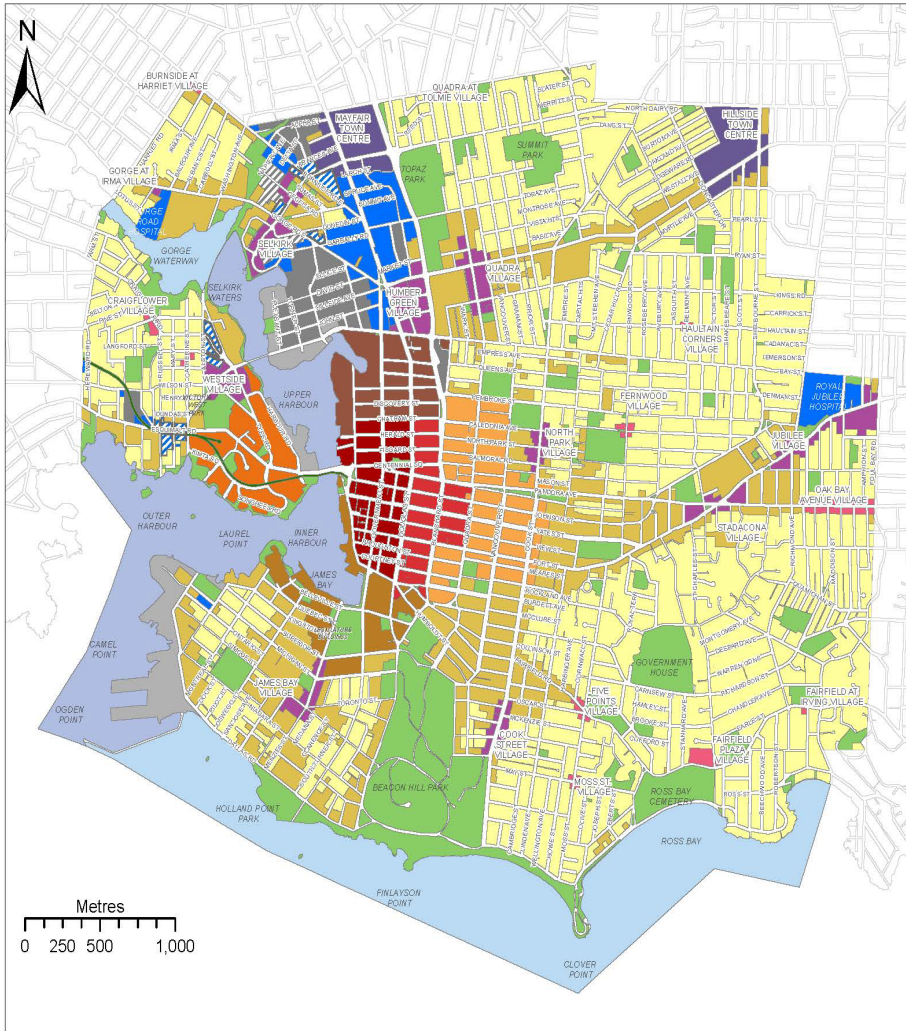
- 1 This Bylaw may be cited as the “OFFICIAL COMMUNITY PLAN BYLAW, 2012, AMENDMENT BYLAW (NO. 40)”.
- 2 Bylaw No. 12-013, the Official Community Plan Bylaw, 2012, is amended in connection with the land known 496 Cecelia Road and a portion of 498 Cecelia Road by:
 - (a) changing its urban place designation from Public Facilities, Institutions, Parks and Open Space to Large Urban Village;
 - (b) repealing Map 2 of section 6 and replacing it with the Map 2 attached to this bylaw as Schedule “A”; and
 - (c) repealing Map 19 of section 21 and replacing it with the Map 22 attached to this bylaw as Schedule “B”.

READ A FIRST TIME the	10th	day of	February	2022
READ A SECOND TIME the	10th	day of	February	2022
Public hearing held on the		day of		2022
READ A THIRD TIME the		day of		2022
ADOPTED on the		day of		2022

CITY CLERK

MAYOR

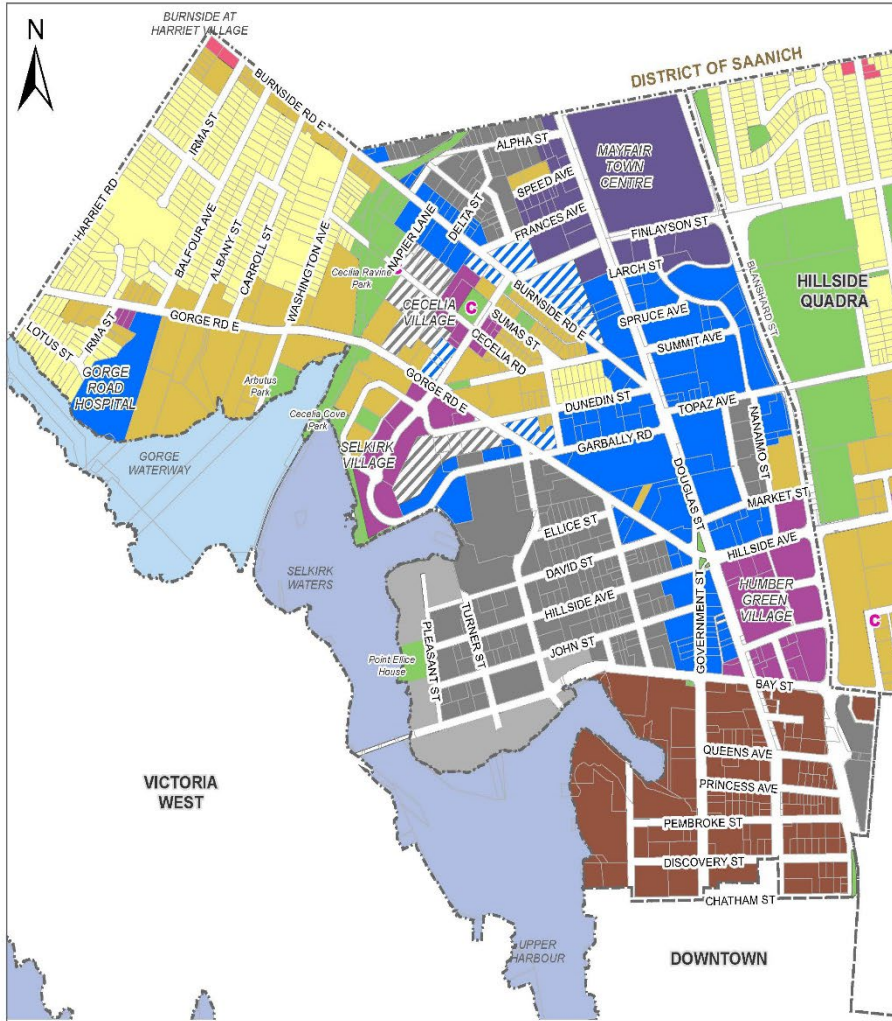




MAP 2 Urban Place Designations

- Core Historic
- Core Business
- Core Employment
- Core Inner Harbour/Legislative
- Core Songhees
- Core Residential
- General Employment
- Employment-Residential
- Industrial Employment
- Industrial Employment-Residential
- Marine Industrial
- Town Centre
- Large Urban Village
- Small Urban Village
- Urban Residential
- Traditional Residential
- Public Facilities, Institutions, Parks and Open Space
- Rail Corridor
- Working Harbour
- Marine

Urban Place Designations extend to the centerlines of adjacent streets.



MAP 19 Burnside Neighbourhood

Urban Place Designations*

- Core Employment
- Industrial Employment
- Employment-Residential
- Industrial
- Marine Industrial
- General Employment
- Town Centre
- Large Urban Village
- Small Urban Village
- Urban Residential
- Traditional Residential
- Public Facilities, Institutions, Parks and Open Space
- Working Harbour
- Marine

*Urban Place Designations are provided for information purposes only. Please refer to Map 2 and Figure 8 for designation information.