


2022

CITY OF VICTORIA | Sustainable Planning & Community Development


Temporary Use Permit Application

For 1450 and 1452 Elford Street


COMMITTEE OF THE WHOLE | SEPTEMBER 8, 2022



1



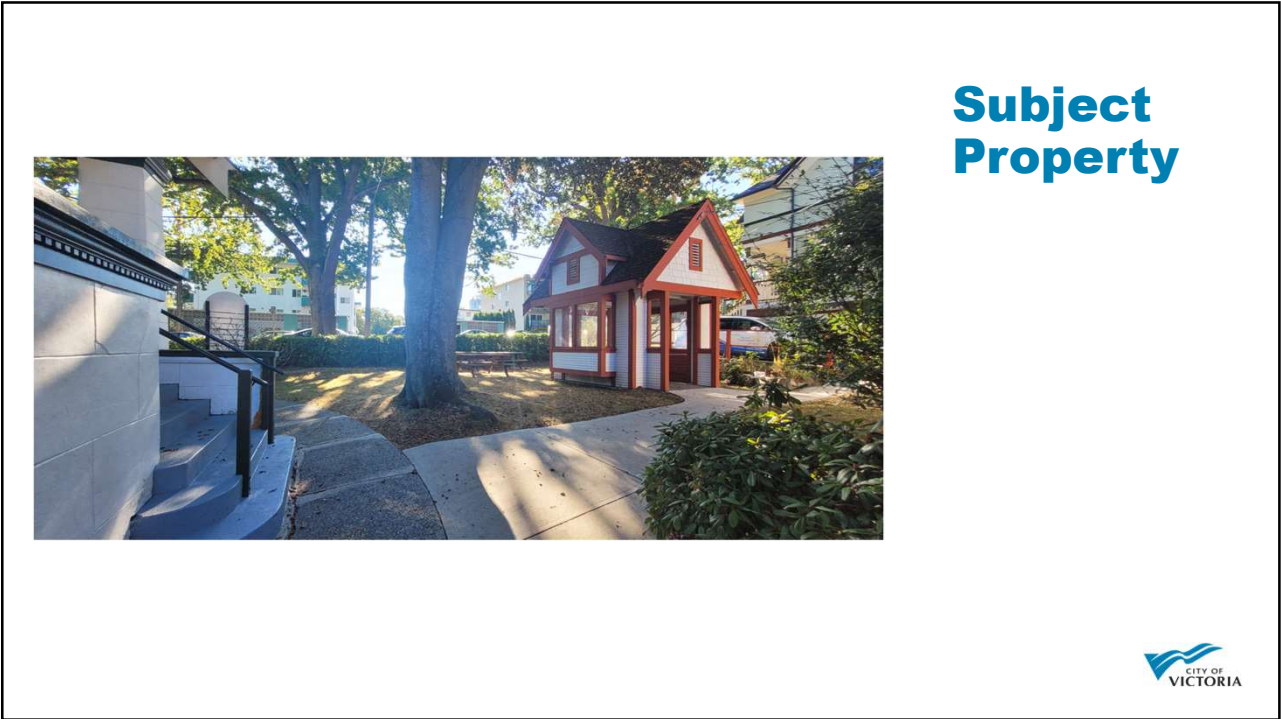
Aerial Photo



2



3



4



**Neighbouring
Properties**

South



5



**Neighbouring
Properties**

East



6

Neighbouring Properties

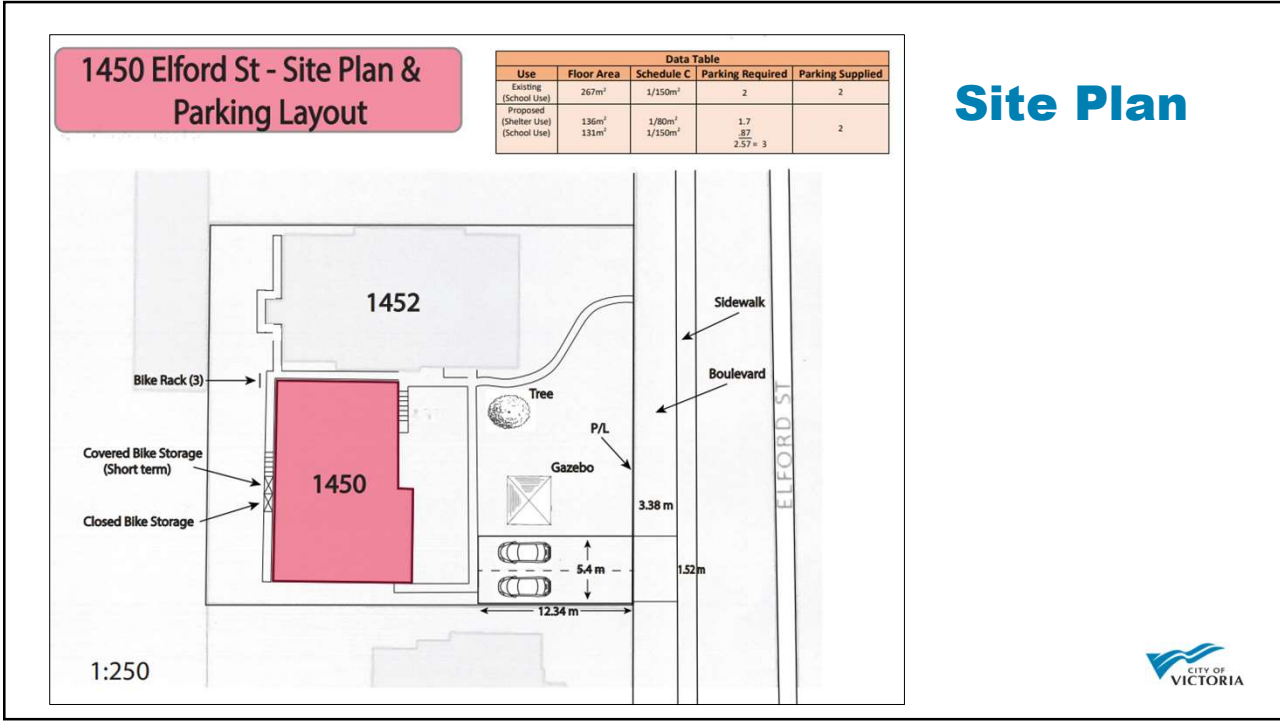
North

7

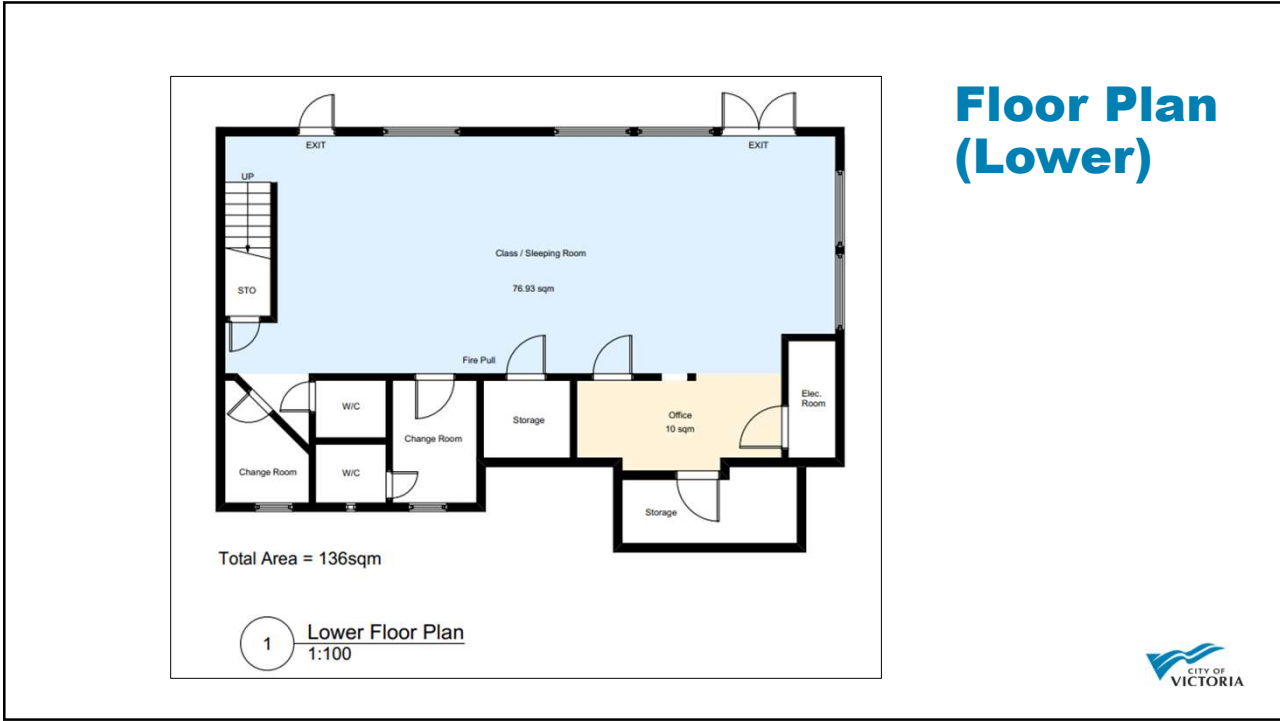
OCP Designation

- Urban Residential
- Public Facilities, Parks and Open Spaces
- Large Urban Village
- Traditional Residential

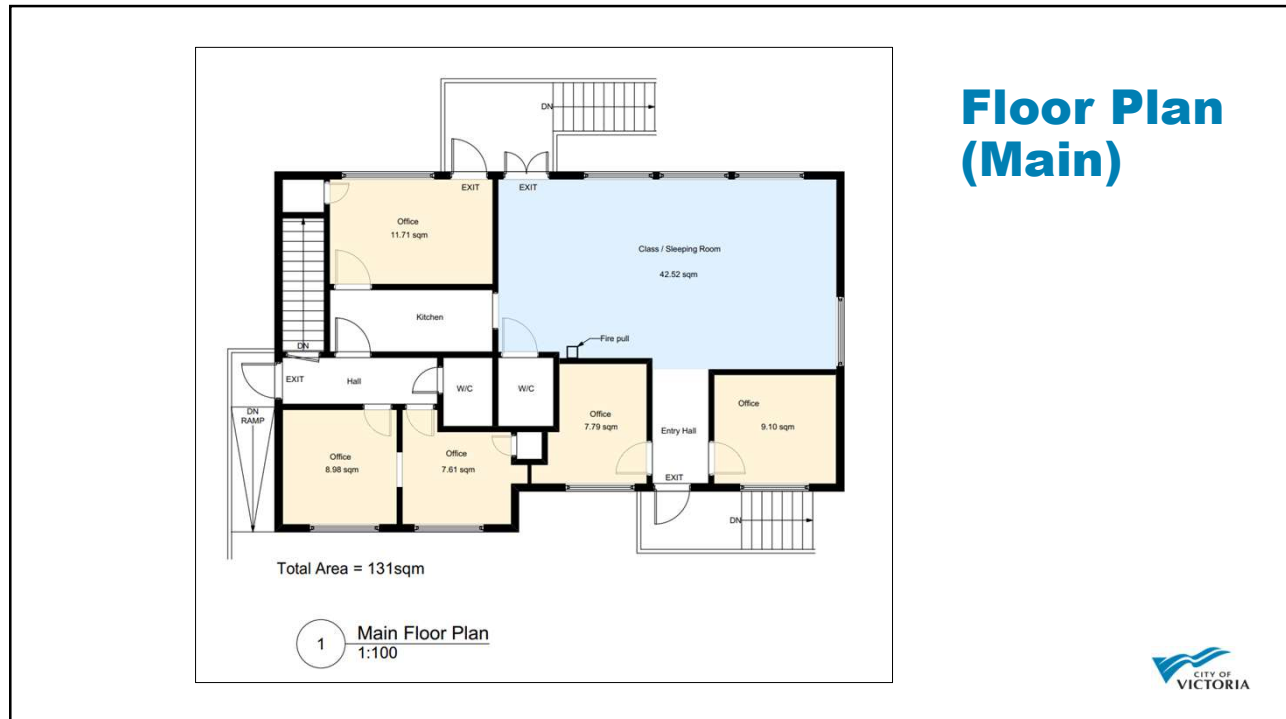
8



9



10



11

Recommendation

- Waive opportunity for public comment to facilitate approval.
- Ratify decision at daytime session of Council immediately following COTW.

12

Conclusion

- TUP is for existing use, with no changes to the building.
- Term of up to three years.
- Shelter use is supported by OCP policy.
- Minor parking stall variance.

